



350-501^{Q&As}

Implementing and Operating Cisco Service Provider Network Core Technologies (SPCOR)

Pass Cisco 350-501 Exam with 100% Guarantee

Free Download Real Questions & Answers **PDF** and **VCE** file from:

<https://www.geekcert.com/350-501.html>

100% Passing Guarantee
100% Money Back Assurance

Following Questions and Answers are all new published by Cisco
Official Exam Center

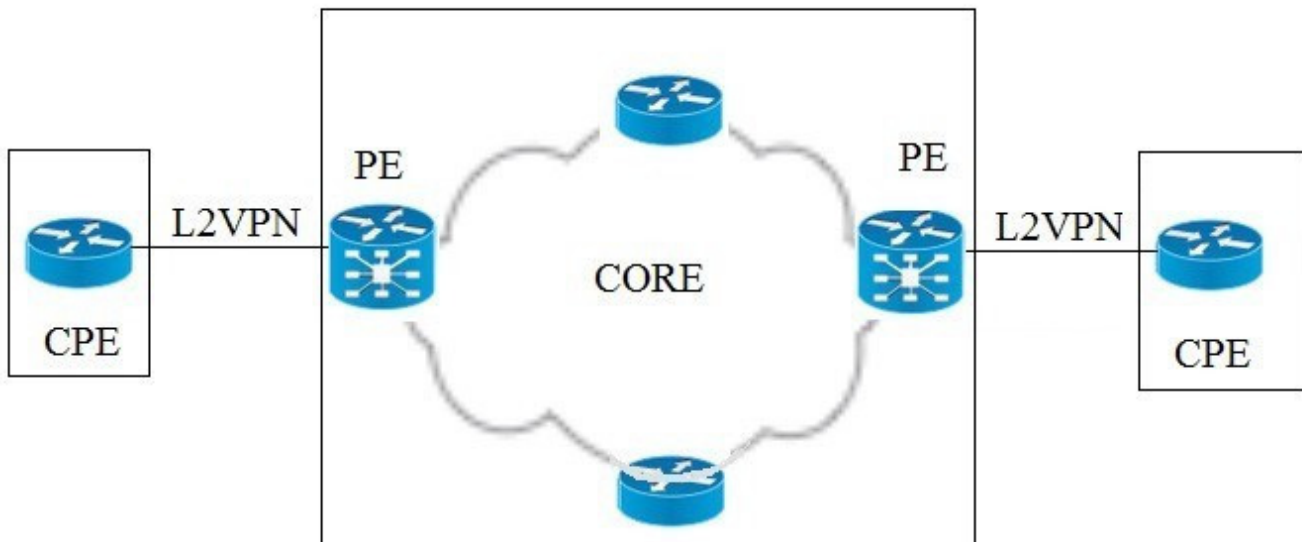
- ⚙️ **Instant Download** After Purchase
- ⚙️ **100% Money Back** Guarantee
- ⚙️ **365 Days** Free Update
- ⚙️ **800,000+** Satisfied Customers





QUESTION 1

Refer to the exhibit.



The PE devices are Cisco ASR 9000 Series that provide L2VPN services according to the EVC model. The customer intends to run several C-tags on both ends of the connection. What happens to the existing VLANs on the Layer 2 transport on PEs that face the CEs?

- A. Existing VLANs are removed by default.
- B. Existing VLANs need to be removed by using the rewrite command.
- C. Existing VLANs are preserved by default.
- D. Existing VLANs need to be reconfigured by using the encapsulation command.

Correct Answer: C

QUESTION 2

A network engineer must configure a router for Flexible NetFlow IPFIX export. The IP address of the destination server is 172.17.12.1. The source address must be set to the Loopback0 IPv4 address and exported packets must be set to DSCP CS3. The TTL must be 64 and the transport protocol must be set to UDP with destination port 4739. Which configuration must the engineer apply to the router?

- A. `configure terminal`
`flow exporter EXPORTER-1 destination 172.17.12.1 source Loopback0 dscp 3 ttl 64 export-protocol netflow-v9 transport udp 4739`
`end`



B. configure terminal
flow exporter EXPORTER-1 destination 172.17.12.1 source Loopback0 dscp 24 ttl 64 export-protocol ipfix
end

C. configure terminal
flow exporter EXPORTER-1 destination 172.17.12.1 source Loopback0 dscp 24 ttl 64 export-protocol netflow-v9
transport udp 4739
end

D. configure terminal
flow exporter EXPORTER-1 destination 172.17.12.1 source Loopback0 dscp 3 ttl 64 export-protocol ipfix
end

Correct Answer: B

QUESTION 3

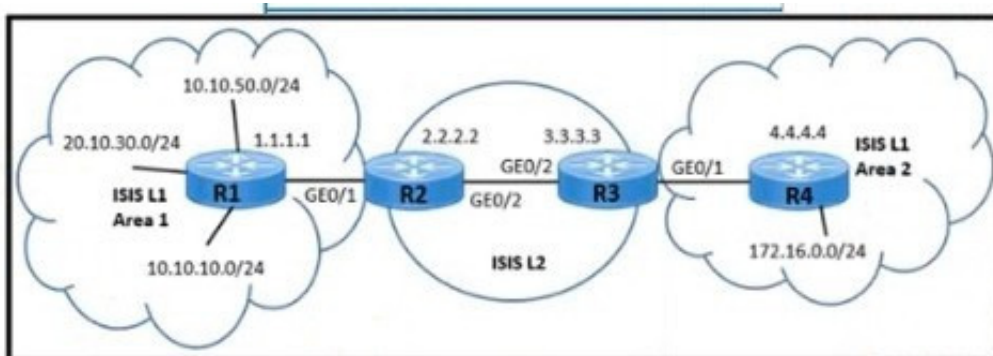
What is the function of the FEC field within the OTN signal structure?

- A. It allows the sending devices to apply QoS within the OTN forwarding structure.
- B. It allows deep inspection of data payload fields.
- C. It allows receivers to correct errors upon data arrival
- D. It allows source nodes to discard payload errors before transmitting data on the network.

Correct Answer: C

QUESTION 4

Refer to the exhibit.



A network engineer must meet these requirements to provide a connects, solution:

1.
The customer connected to Area 2 needs to access the application in Area 1 on the 10.10.10.0/24 subnet

2.



The Customer must not have access to the 20.10.30.0/24 subnet.

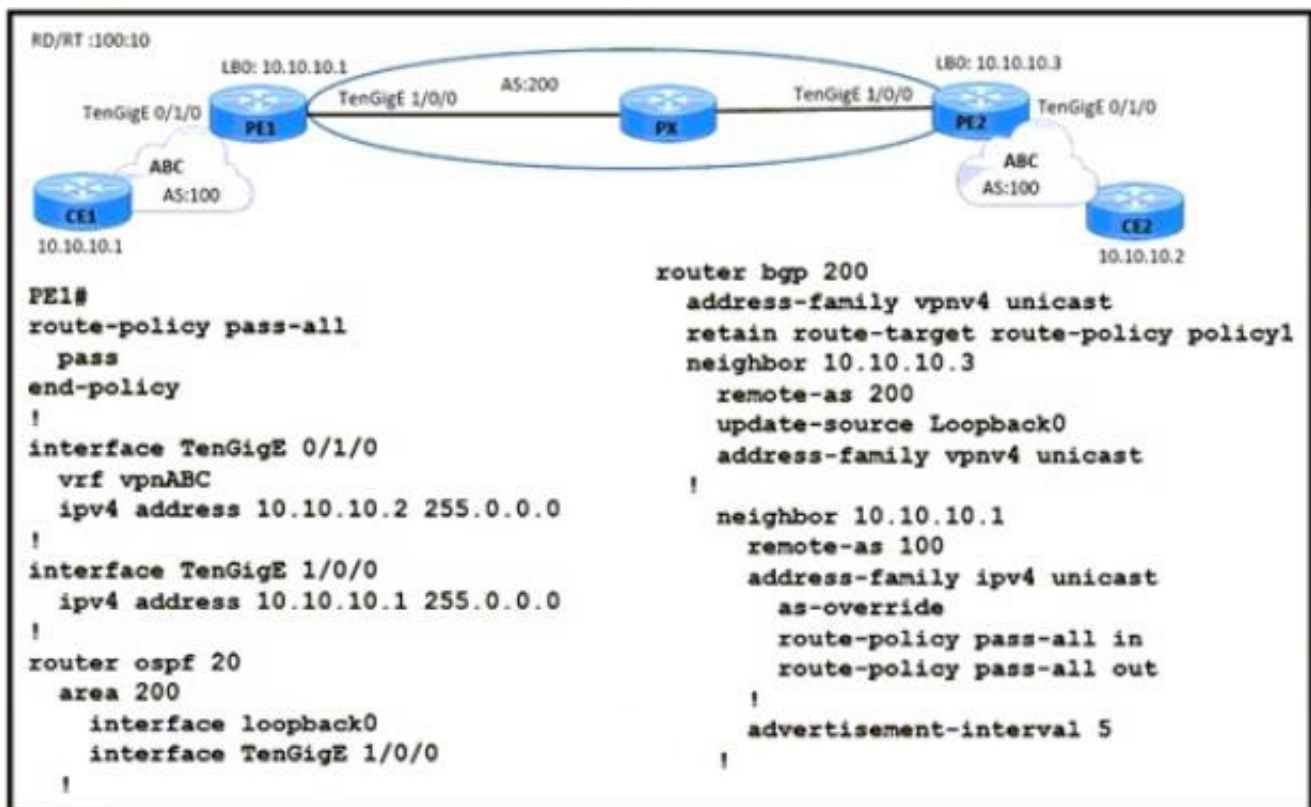
3.

The service provider must make sure that the Area 2 routing database limits the number of IP addresses in the routing table Which two configurations must be implemented to meet the requirements? (Choose two)

- A. Set a tag value of 200 to match the summary address 10.0.0/16 on R2.
- B. Set a tag value of 200 to match the summary address 10.0.0.0/16 on R3.
- C. Apply the route map for tag 200 and leak Level 2 routes into Level 1 Area 2 on R3
- D. Apply the route map for tag 200 and teak Level 2 routes into Level 1 Area 2 on R4.
- E. Set a tag value of 200 to match the summary address 10.0.0./16 on R1.

Correct Answer: BC

QUESTION 5



Refer to the exhibit. A service provider engineer is configuring the connection between CE1 and CE2. AS 200 of the service provider and AS 100 of enterprise ABC should connect using BGP. The engineer already completed the configuration of VRF RT 100:10 of enterprise ABC. Which configuration must the engineer apply on PE1 to meet the requirement?



- A. `router bgp 200`
`neighbor 10.10.10.1`
`remote-as 100`
`address-family vpnv4 unicast`
- B. `vrf vpn1`
`rd 100:1`
`address-family ipv4 unicast`
`redistribute connected`
- C. `router bgp 200`
`address-family ipv4 unicast`
`neighbor 10.10.10.3`
- D. `vrf vpn1`
`rd 100:1`
`address-family vpnv4 unicast`
`redistribute connected`

A. Option A

B. Option B

C. Option C

D. Option D

Correct Answer: A

[350-501 Practice Test](#)

[350-501 Study Guide](#)

[350-501 Exam Questions](#)