



351-001^{Q&As}

CCIE Routing and Switching Written

Pass Cisco 351-001 Exam with 100% Guarantee

Free Download Real Questions & Answers **PDF** and **VCE** file from:

<https://www.geekcert.com/351-001.html>

100% Passing Guarantee
100% Money Back Assurance

Following Questions and Answers are all new published by Cisco
Official Exam Center

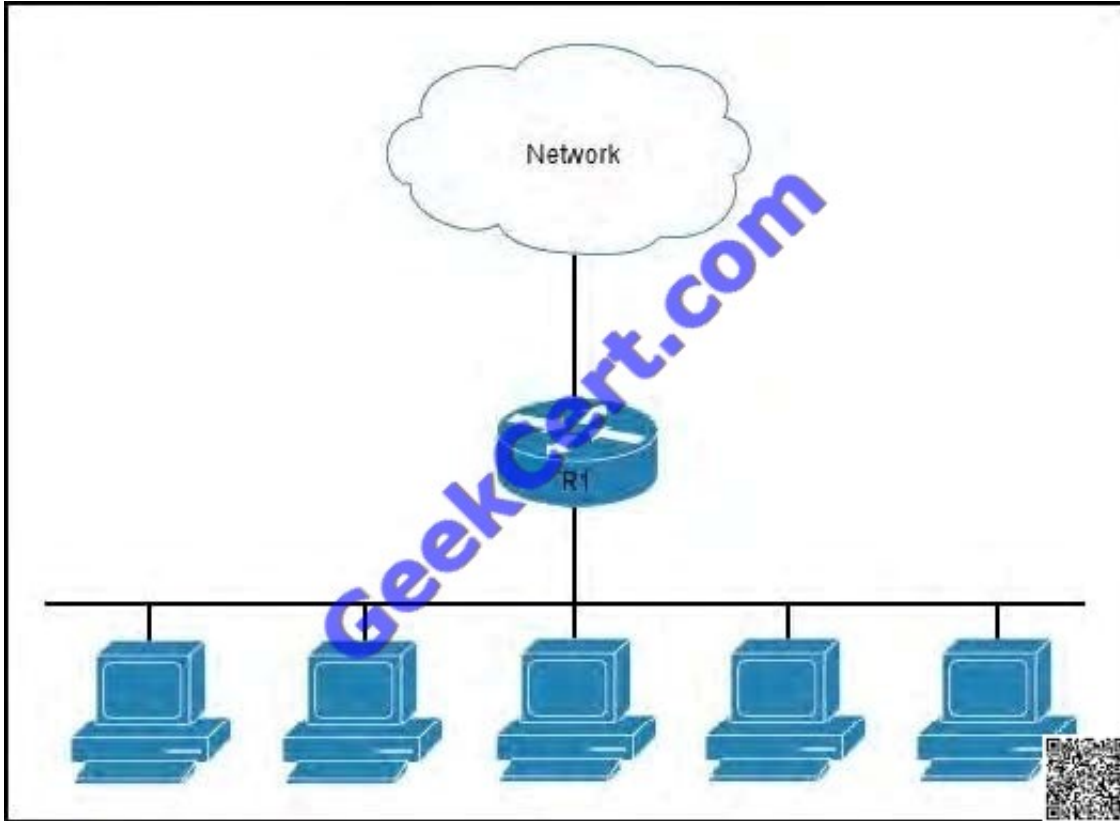
-  **Instant Download** After Purchase
-  **100% Money Back** Guarantee
-  **365 Days** Free Update
-  **800,000+** Satisfied Customers





QUESTION 1

Refer to the exhibit.



If router R1 is functioning as a DHCPv6 server and you enter the command `show ipv6 dhcp binding`, which two options are pieces of information in the output? (Choose two.)

- A. The IA PD
- B. The DUID
- C. The prefix pool
- D. The DNS server
- E. The Rapid-Commit setting

Correct Answer: AB

In the following example, the `show ipv6 dhcp binding` command shows information about two clients, including their DUIDs, IAPDs, prefixes, and preferred and valid lifetimes: Router# `show ipv6 dhcp binding`

```
Client: FE80::202:FCFF:FEA5:DC39 (GigabitEthernet2/1/0) DUID. 000300010002FCA5DC1C IA PD. IA ID 0x00040001, T1 0, T2 0 Prefix: 3FFE:C00:C18:11::/68 preferred lifetime 180, valid lifetime 12345 expires at Nov 08 2002 02:24 PM (12320 seconds) Client: FE80::202:FCFF:FEA5:C039 (GigabitEthernet2/1/0) DUID. 000300010002FCA5C01C IA PD. IA ID 0x00040001, T1 0, T2 0 Prefix: 3FFE:C00:C18:1::/72 preferred lifetime 240, valid lifetime 54321 expires at Nov 09 2002 02:02 AM (54246 seconds) Prefix: 3FFE:C00:C18:2::/72 preferred lifetime 300, valid lifetime 54333 expires at Nov 09 2002 02:03 AM (54258 seconds) Prefix: 3FFE:C00:C18:3::/72 preferred
```



lifetime 280, valid lifetime 51111

Reference: http://www.cisco.com/c/en/us/td/docs/ios-xml/ios/ipaddr_dhcp/configuration/xe-3s/dhcp-xe-3s-book/ip6-dhcp-prefix-xe.html

QUESTION 2

Which timer expiration can lead to an EIGRP route becoming stuck in active?

- A. hello
- B. active
- C. query
- D. hold

Correct Answer: B

As noted above, when a route goes into the active state, the router queries its neighbors to find a path to the pertinent network. At this point, the router starts a three minute active timer by which time it must receive replies from all queried neighbors. If a neighbor has feasible successors for the route, it will recalculate its own local distance to the network and report this back. However, if a neighbor does not have a feasible successor, it also goes into active state. In some cases, multiple routers along multiple query paths will go into active state as routers continue to query for the desired route. In most cases, this process will yield responses from all queried routers and the sought after route will transition back into the passive state within the three minute SIA query timer. In the case that none of the queried routers can provide a feasible successor, the route is cleared. In some cases, a response is not received between two neighbor routers because of link failures, congestion or some other adverse condition in either the network or on the queried router, and the three minute active timer expires on the router originating the query. When this happens, the querying router that did not receive a response logs a "DUAL-3-SIA" or "stuck-in-active" error for the route and then drops and restarts its adjacency with the non-responding router

Reference: <http://www.packetdesign.com/resources/technical-briefs/diagnosing-eigrp-stuck-active>

QUESTION 3

Which two statements about reverse ARP are true? (Choose two.)

- A. Its servers require static mappings.
- B. It works with AutoInstall to configure new devices.
- C. It provides IP addresses for subnet masks.
- D. It provides IP addresses for default gateways.
- E. It requires less maintenance than DHCP.

Correct Answer: AB

QUESTION 4



You are configuring a DMVPN spoke to use IPsec over a physical interface that is located within a VRF. For which three configuration sections must you specify the VRF name? (Choose three.)

- A. the ISAKMP profile
- B. the crypto keyring
- C. the IPsec profile
- D. the IPsec transform set
- E. the tunnel interface
- F. the physical interface

Correct Answer: BEF

ip vrf forwarding vrf-name

Example:

```
Router(config-if)# ip vrf forwarding green
```

Associates a virtual private network (VPN) routing and forwarding (VRF) instance with an interface or subinterface.

?

vrf-name is the name assigned to a VRF.

```
Router(config-if)# tunnel vrf vrf-name
```

Example:

```
Router(config-if)# tunnel vrf finance1
```

Associates a VPN routing and forwarding (VRF) instance with a specific tunnel destination.

vrf-name is the name assigned to a VRF.

```
Router(config)# crypto keyring keyring-name [vrf fvrf-name] Defines a crypto keyring to be used during IKE authentication and enters keyring
```

?

keyring-name--Name of the crypto keyring.

?

fvrf-name--(Optional) Front door virtual routing and forwarding (FVRF) name to which the keyring will be referenced. fvrf-name must match the FVRF name that was defined during virtual routing and forwarding (VRF) configuration

QUESTION 5

Which two statements about SNMP are true? (Choose two.)



- A. SNMPv3 provides privacy and access control.
- B. All SNMP versions use get, getNext, and getBulk operations.
- C. SNMPv3 uses encrypted community strings.
- D. SNMPv1 and SNMPv2c use plaintext community strings.
- E. All SNMP versions support bulk retrieval and detailed error messages.

Correct Answer: AB

[351-001 PDF Dumps](#)

[351-001 VCE Dumps](#)

[351-001 Study Guide](#)



To Read the [Whole Q&As](#), please purchase the [Complete Version](#) from [Our website](#).

Try our product !

- 100% Guaranteed Success
- 100% Money Back Guarantee
- 365 Days Free Update
- Instant Download After Purchase
- 24x7 Customer Support
- Average 99.9% Success Rate
- More than 800,000 Satisfied Customers Worldwide
- Multi-Platform capabilities - [Windows](#), [Mac](#), [Android](#), [iPhone](#), [iPod](#), [iPad](#), [Kindle](#)

We provide exam PDF and VCE of Cisco, Microsoft, IBM, CompTIA, Oracle and other IT Certifications. You can view Vendor list of All Certification Exams offered:

<https://www.geekcert.com/allproducts>

Need Help

Please provide as much detail as possible so we can best assist you.
To update a previously submitted ticket:



 <p>One Year Free Update Free update is available within One Year after your purchase. After One Year, you will get 50% discounts for updating. And we are proud to boast a 24/7 efficient Customer Support system via Email.</p>	 <p>Money Back Guarantee To ensure that you are spending on quality products, we provide 100% money back guarantee for 30 days from the date of purchase.</p>	 <p>Security & Privacy We respect customer privacy. We use McAfee's security service to provide you with utmost security for your personal information & peace of mind.</p>
---	---	--

Any charges made through this site will appear as Global Simulators Limited.
All trademarks are the property of their respective owners.
Copyright © geekcert, All Rights Reserved.