



352-011^{Q&As}

Cisco Certified Design Expert Practical

Pass Cisco 352-011 Exam with 100% Guarantee

Free Download Real Questions & Answers **PDF** and **VCE** file from:

<https://www.geekcert.com/352-011.html>

100% Passing Guarantee
100% Money Back Assurance

Following Questions and Answers are all new published by Cisco
Official Exam Center

-  **Instant Download** After Purchase
-  **100% Money Back** Guarantee
-  **365 Days** Free Update
-  **800,000+** Satisfied Customers





QUESTION 1

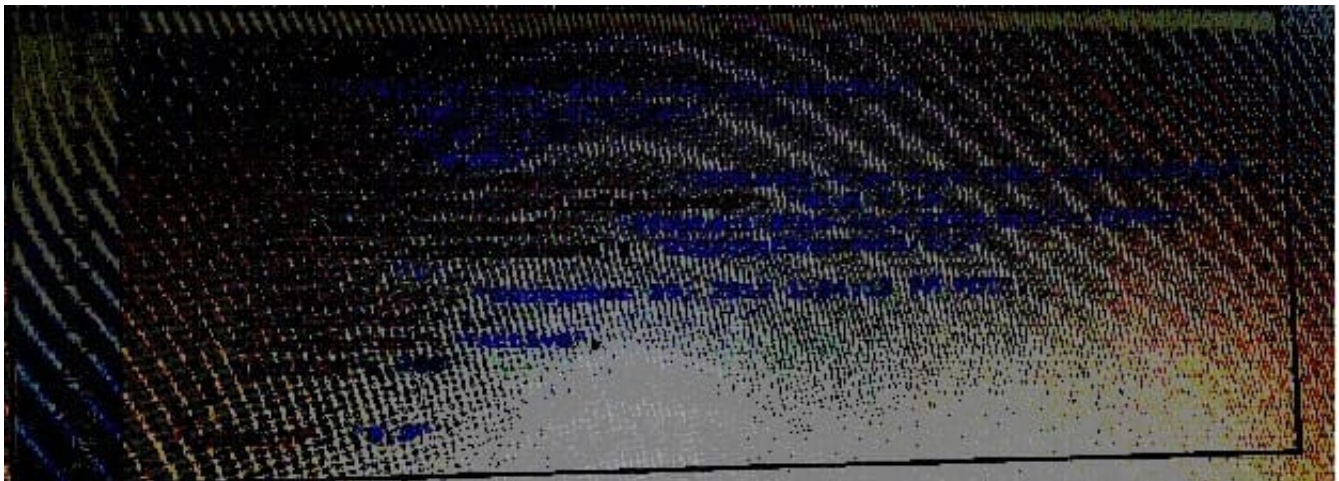
A very large enterprise customer is migrating from EIGRP to IS-IS .What is your main concern in regards to change in the path packets take after the migration is complete?

- A. The areas sizes.
- B. The number of prefixes
- C. The redistribution points.
- D. The bandwidth and metrics of the links.

Correct Answer: D

QUESTION 2

Refer to the exhibit.



Which data format is used in this REST API call?

- A. JSON
- B. HTMLv5
- C. HTML
- D. XML
- E. BASH

Correct Answer: A

QUESTION 3



Which main IoT migration aspect should be reviewed for a manufacturing plant?

- A. Sensors
- B. Security
- C. Applications
- D. Wi-Fi Infrastructure
- E. Ethernet Switches

Correct Answer: A

QUESTION 4

What is a correct design consideration of IPv6 MLD snooping?

- A. MLD snooping conserves bandwidth on switches.
- B. MLD snooping is used to filter all MLD queries.
- C. MLD snooping requires IGMP snooping to be implemented.
- D. MLD snooping conserves CPU by sharing IPv4 and IPv6 multicast topology.

Correct Answer: A

QUESTION 5

How can a network designer reduce the amount of LSA flooding occurring in a large, single area fully-meshed OSPF topology?

- A. Implemented passive OSPF interfaces on the routers not participating on the DR/BDR election.
- B. Use access control lists to control outbound advertisements.
- C. Ensure DR and BDR routers are placed optimally in the topology.
- D. Place all point-to-point links in their own dedicated areas.

Correct Answer: C

[Latest 352-011 Dumps](#)

[352-011 PDF Dumps](#)

[352-011 Study Guide](#)