



# 352-011<sup>Q&As</sup>

Cisco Certified Design Expert Practical

## Pass Cisco 352-011 Exam with 100% Guarantee

Free Download Real Questions & Answers **PDF** and **VCE** file from:

<https://www.geekcert.com/352-011.html>

100% Passing Guarantee  
100% Money Back Assurance

Following Questions and Answers are all new published by Cisco  
Official Exam Center

- ⚙️ **Instant Download** After Purchase
- ⚙️ **100% Money Back** Guarantee
- ⚙️ **365 Days** Free Update
- ⚙️ **800,000+** Satisfied Customers





### QUESTION 1

Which three options are IS-IS design considerations when connecting two Layer 3 switches directly using a 10 GBASE-T cabling and formatting an IS-IS neighbor adjacency?

- A. The default IS-IS network type is point-to-point so a DIS is not elected
- B. A DIS is elected between the IS-IS neighbors and the elected DIS is pre-empted if router with a higher system ID is connected
- C. The area, levels, and interface MTU parameters must match, and system MTU must be unique for two IS-IS routers to become adjacent
- D. Faster IS-IS hello and dead timers increase bandwidth and CPU use, and may cause instability
- E. The IS-IS hello and dead timers should be tuned to detect failures as quickly as possible
- F. A DIS is elected between the IS-IS neighbors and the elected Dis is pre-empted if a router with a lower system ID is connected
- G. The hello and dead timers must match for two IS-IS routers to become adjacent

Correct Answer: CDF

---

### QUESTION 2

A Company has these requirements for access to their wireless and wired corporate LANs using 802.1x

Clients devices that corporate assets and have joined the active directory domain are allowed access

Personal devices must be not allowed access

Clients and access servers must be mutually authenticated.

Which solution meets these requirements?

- A. Protected EAP/Microsoft CHAP v2 with user authentication
- B. EAP-TLS with machine authentication
- C. EAP-TLS with user authentication
- D. Protected EAP/Microsoft CHAP v2 with Machine authentication

Correct Answer: B

---

### QUESTION 3

Which two foundational aspects of IoT are still evolving and being worked on by the industry at large? (Choose two) A.



Regulatory domains

B. IoT consortia

C. Standards

D. Low energy Bluetooth sensors

E. WiFi protocols

Correct Answer: AD

---

#### QUESTION 4

How can jitter be compensated on an IP network that carries real-time VoIP traffic with acceptable voice transmission quality?

A. Set up VAD to replace gaps on speech with comfort noise

B. Change CODEC from G.729 to G.711

C. Deploy RSVP for dynamic VoIP packet classification

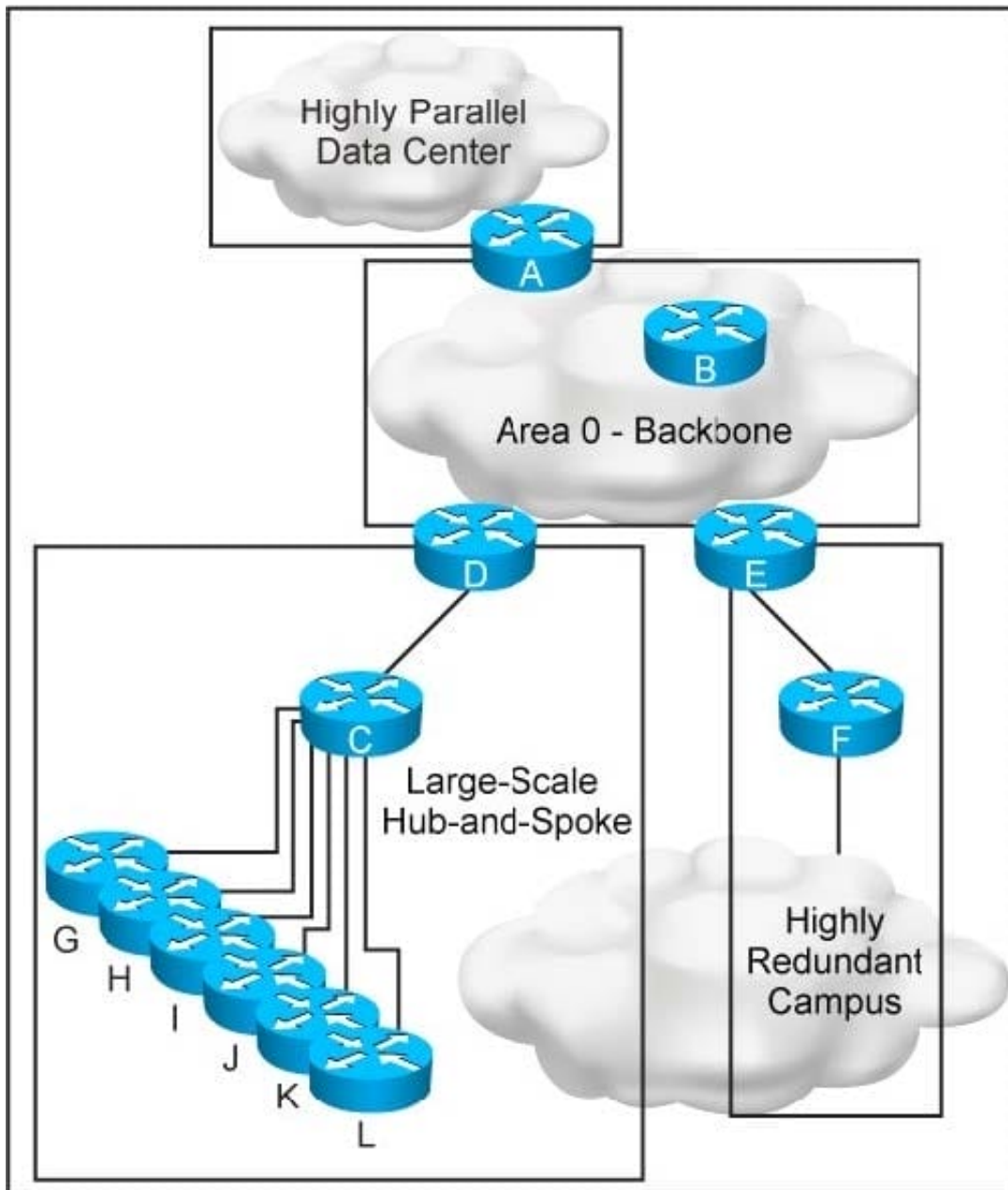
D. Set up a playout buffer to play back the voice stream

Correct Answer: D

---

#### QUESTION 5

Refer to the exhibit.



This new OSPF network has four areas, but the hub-and-spoke area experiences frequent flapping. In order to fix this design failure, which two mechanisms can you use to isolate the data center area from the hub-and-spoke area without losing IP connectivity? (Choose two)

- A. Use OSPF distribute-list filtering on router A
- B. Deploy a prefix summarization on router D
- C. Make the data center area a NSSA
- D. Make the data center area totally stub
- E. Convert the data center area to EIGRP protocol

Correct Answer: BD



VCE & PDF

GeekCert.com

<https://www.geekcert.com/352-011.html>

2024 Latest geekcert 352-011 PDF and VCE dumps Download

---

[352-011 VCE Dumps](#)

[352-011 Study Guide](#)

[352-011 Braindumps](#)