



# 3605<sup>Q&As</sup>

Avaya Ethernet Routing Switch Implementation and Maintenance Exam

## Pass Avaya 3605 Exam with 100% Guarantee

Free Download Real Questions & Answers **PDF** and **VCE** file from:

<https://www.geekcert.com/3605.html>

100% Passing Guarantee  
100% Money Back Assurance

Following Questions and Answers are all new published by Avaya  
Official Exam Center

- ⚙️ **Instant Download** After Purchase
- ⚙️ **100% Money Back** Guarantee
- ⚙️ **365 Days** Free Update
- ⚙️ **800,000+** Satisfied Customers





### QUESTION 1

Consider four software upgrade events on an Ethernet Routing Switch (ERS) 2500 series switch:

1.  
Upgrade the software image
2.  
The System Reboots
3.  
Backup the binary configuration to a TFTP server
4.  
Upgrade the boot/diagnostic code, if the new version is available

Which sequence of events will correctly upgrade the software?

- A. 3.2.4. 1
- B. 3.4.2.1
- C. 3.2.1.4
- D. 1.2.4.3
- E. 1.4.2.3

Correct Answer: B

---

### QUESTION 2

When configuring Single Link Trunking (SLT) or Split Multi-Link Trunking (SMLT), what can be done to facilitate easily adding more VLANs to the network without impacting traffic?

- A. 802.1Q-tag uplinks.
- B. Disable STP on the ports.
- C. Index the ports.
- D. Use redundant MLTs.

Correct Answer: A

---

### QUESTION 3

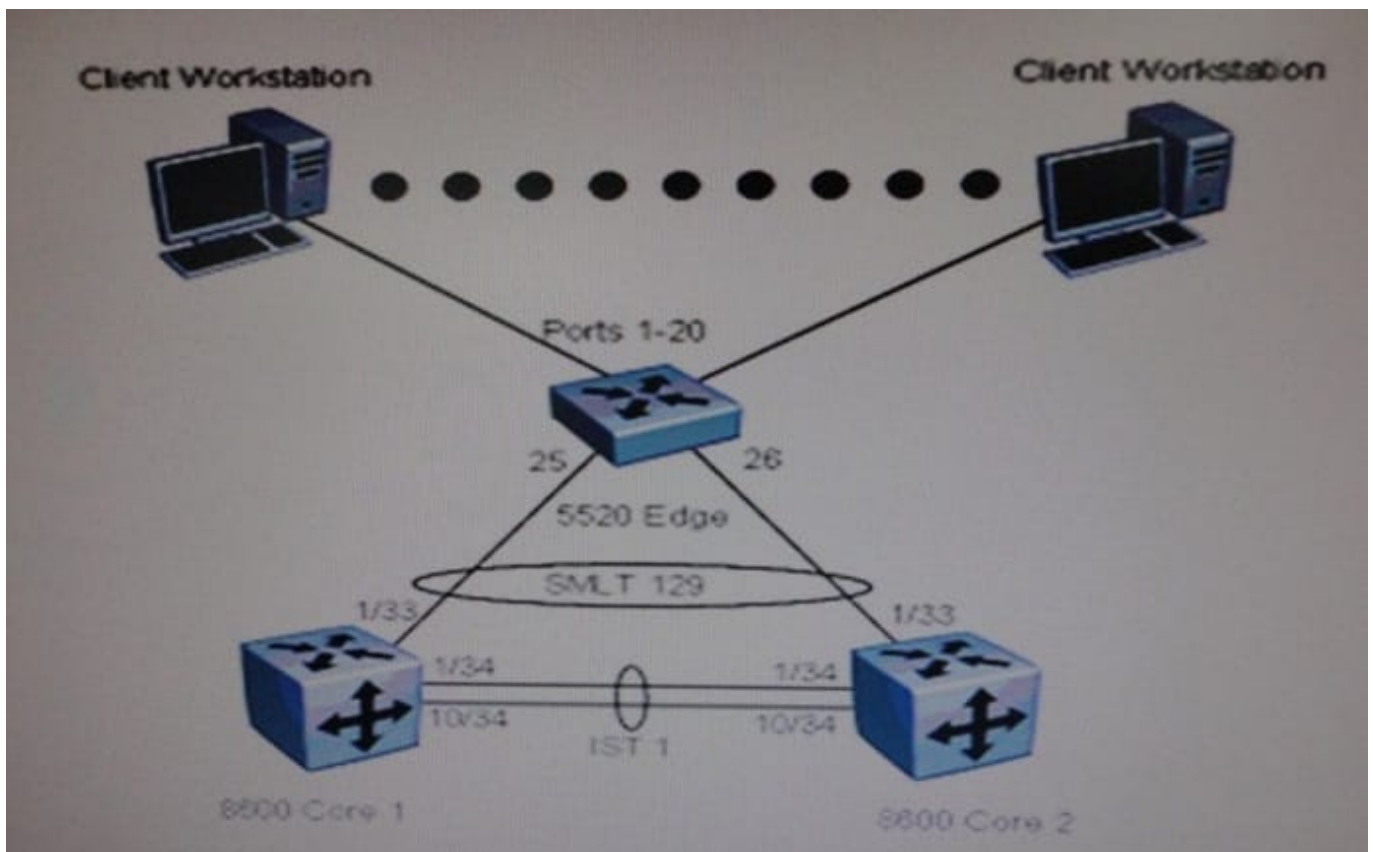


An existing enterprise network is using Ethernet Routing Switch (ERS) 8600 switches in the campus core. It has determined that 10 Gigabit links are required to replace the existing 1 Gigabit links 1 to the closest. This will affect 18 connections on each of the ERS 8600 switches. Which statement describes how to accomplish this requirement in each ERS 8600 chassis?

- A. Replace the two existing switch fabric modules with 8394SF systems.
- B. Replace the two existing switch fabric modules with 8692SF and Supermezz.
- C. Replace the two existing 8616SX modules with 8612XLRS modules.
- D. Replace the six 8683XLR modules with 8612XLRS.

Correct Answer: C

#### QUESTION 4



Which two pairs of commands will configure spanning tree on the edge switch? (Choose two)

- A. 5520-24T (config) # interface fastethernet 25-265520-24T (config-if) # spanning-tree learning fast
- B. 5520-24T (config) # interface fastethernet 25-265520-24T (config-if) # spanning tree learning disable
- C. 5520-24T (config) # interface fastethernet 1-205520-24T (config-if) # spanning tree learning disable
- D. 5520-24T (config) # interface fastethernet 1-205520-24T (config-if) # spanning-tree learning fast



Correct Answer: AC

---

#### QUESTION 5

In a newly installed network the port LED on an Ethernet Routing Switch (ERS) 5500 is amber, not green. What does this mean?

- A. The port is set to operate at 10 Mbps.
- B. The port is set to operate at 100 Mbps.
- C. It indicates that there is a transmit fault.
- D. It indicates that the port is administratively disabled.

Correct Answer: D

[3605 PDF Dumps](#)

[3605 Practice Test](#)

[3605 Braindumps](#)