



# 400-351<sup>Q&As</sup>

CCIE Wireless Written

## Pass Cisco 400-351 Exam with 100% Guarantee

Free Download Real Questions & Answers **PDF** and **VCE** file from:

<https://www.geekcert.com/400-351.html>

100% Passing Guarantee  
100% Money Back Assurance

Following Questions and Answers are all new published by Cisco  
Official Exam Center

-  **Instant Download** After Purchase
-  **100% Money Back** Guarantee
-  **365 Days** Free Update
-  **800,000+** Satisfied Customers





### QUESTION 1

Refer to the exhibit. While troubleshooting a central web authentication issue with Cisco ISE 2.0 or above, you see this message on the Cisco WLC. Which statement about this message is true?

```
∨ AVP: L=44 t=Vendor-Specific(26) v=ciscoSystems(9)
AVP Type: 26
AVP Length: 44
> VSA: L=38 t=Cisco-AVPair(1): subscriber:reauthenticate-type=rerun
∨ AVP: L=41 t=Vendor-Specific(26) v=ciscoSystems(9)
AVP Type: 26
AVP Length: 41
∨ VSA: L=35 t=Cisco-AVPair(1): subscriber:command=reauthenticate
Cisco-AVPair: subscriber:command=reauthenticate
```

- A. This is a standard CoA message from ISE and the WLC does not send a dissociation frame on air to the client
- B. This message is valid only for clients with CCX version 3 or above
- C. This message results in WLC sending a dissociation frame to the client on air
- D. This message is not accepted by WLC because it is using an invalid TLV

Correct Answer: A

### QUESTION 2

Which two statements about deploying a mesh network by MAPs/RAP?

- A. A MAP/RAP must be authorized by either PSK or EAP before joining a controller in bridge mode.
- B. The backhaul client access feature cannot be enabled on a RAP that is, a RAP does not allow clients on its 802.11a radio.
- C. The three main type of mesh type under the neighbor information are neighbor,parent, and child. For types default neighbor, default parent, and default child, default is used when the neighbor BGN is not known or different from the current AP BGN if the strict matching BGN feature is disabled.
- D. Radius and Local authentications are supported with both PSK and EAP.
- E. VLAN tags are always forward across Mesh links.

Correct Answer: CD

### QUESTION 3



Flexconnect APs have already deployed in a branch office for local switching. Currently the WLAN in the large auditorium is proposed to change to high-density design and thus some low data rates are proposed to be disabled while keeping the data rates in other areas under the same Cisco WLC. Which configuration settings must be modified in the Cisco WLC to achieve this configuration ? (choose two)

- A. FlexconnectgroupS
- B. Mobility groups
- C. AP Groups
- D. RF profiles

Correct Answer: CD

---

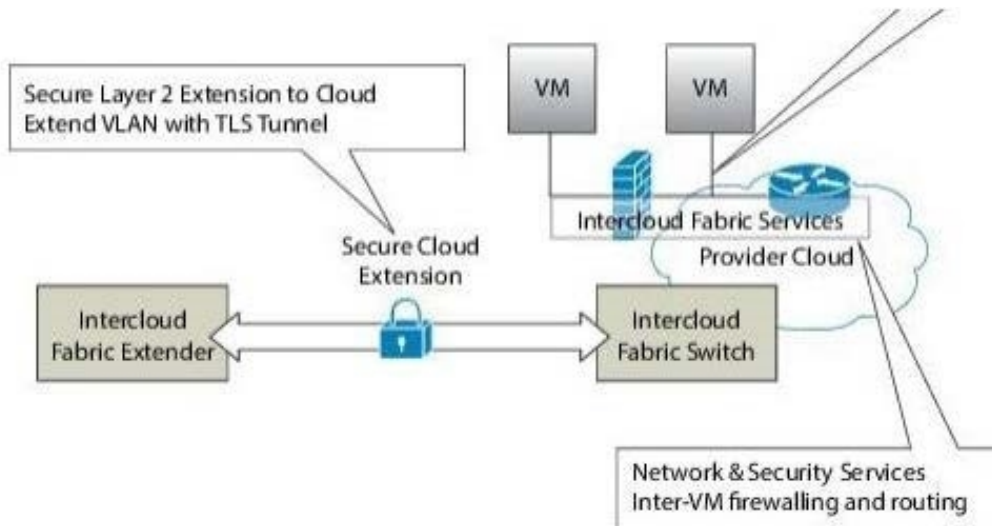
#### QUESTION 4

Which option describes the function of the Intercloud Fabric Extender?

- A. It provides the network overlay functionality between the used clouds or cloud models.
- B. It establishes a secure site-to-site tunnel to the intercloud fabric agent in the private cloud.
- C. It applies network policies and collects and reports VEM-related intercloud statistics.
- D. It establishes a secure site-to-site tunnel to the intercloud fabric switch in the provider cloud.

Correct Answer: D

From:



### Intercloud Fabric Extender

The Intercloud Fabric Extender is a virtual machine that runs in the private cloud. It is responsible for establishing a secure tunnel for interconnecting the Intercloud Fabric components in the private cloud with the provider cloud. The main functions of the Intercloud Fabric Extender are as follows:

- Establishes a secure tunnel to interconnect all of the cloud resources.
- Interacts with the virtual switch, such as the Cisco Nexus-1000V, at the private cloud.

### Cisco Intercloud Fabric Agent

The Cisco Intercloud Fabric Agent (ICA) provides a network overlay for the VMs in the cloud. It secures the guest VM traffic in the cloud and abstracts the cloud infrastructure. It is deployed in the provider cloud as a secure tunnel driver that runs within the cloud VM's operating system. It also redirects network traffic to the secure overlay network as follows:

- Establishes a secure tunnel to connect to an Intercloud Fabric Switch that allows VMs in the cloud to communicate with private cloud VMs and provider cloud VMs.
- Collects secure overlay-related statistics.

### Intercloud Fabric Switch

The Intercloud Fabric Switch is a virtual machine that runs in the provider cloud. It is responsible for establishing secure tunnels for connecting VMs in the provider cloud to the private cloud VMs and other VMs in the cloud. The main functions of the Intercloud Fabric Switch are as follows:

- Runs the Virtual Ethernet Module (VEM) to provide the Cisco Nexus 1000V functions.
- Establishes a secure tunnel to connect the VEM with Intercloud Fabric Extender.
- Establishes secure tunnels to connect all of the cloud VMs.
- Monitors and reports statistics of VMs in the cloud.
- Monitors and reports any component failures in the cloud to Cisco Prime Network Services Controller (PNSC).

The VEM is embedded in the Intercloud Fabric Switch and is responsible for the following:



- Communicates with the Virtual Supervisor Module (VSM) function that runs at the private cloud for retrieving VM-specific network policies such as port profiles.
- Switches the network traffic between cloud VMs.
- Switches the network traffic between cloud VMs and the private cloud.
- Applies network policies to any switching network traffic.
- Collects and reports VEM-related statistics.

[http://www.cisco.com/c/en/us/td/docs/cloud-systems-management/cisco-intercloud-fabric/cisco-intercloud-fabric-for-business/2-3-1/getting-started-guide/b\\_Cisco\\_Intercloud\\_Fabric\\_Getting\\_Started\\_Guide\\_Release\\_2\\_3\\_1/b\\_Cisco\\_Intercloud\\_Fabric\\_Getting\\_Started\\_Guide\\_Release\\_2\\_3\\_1\\_chapter\\_00.pdf](http://www.cisco.com/c/en/us/td/docs/cloud-systems-management/cisco-intercloud-fabric/cisco-intercloud-fabric-for-business/2-3-1/getting-started-guide/b_Cisco_Intercloud_Fabric_Getting_Started_Guide_Release_2_3_1/b_Cisco_Intercloud_Fabric_Getting_Started_Guide_Release_2_3_1_chapter_00.pdf) Cisco Inter cloud Fabric Architectural Overview - Cisco

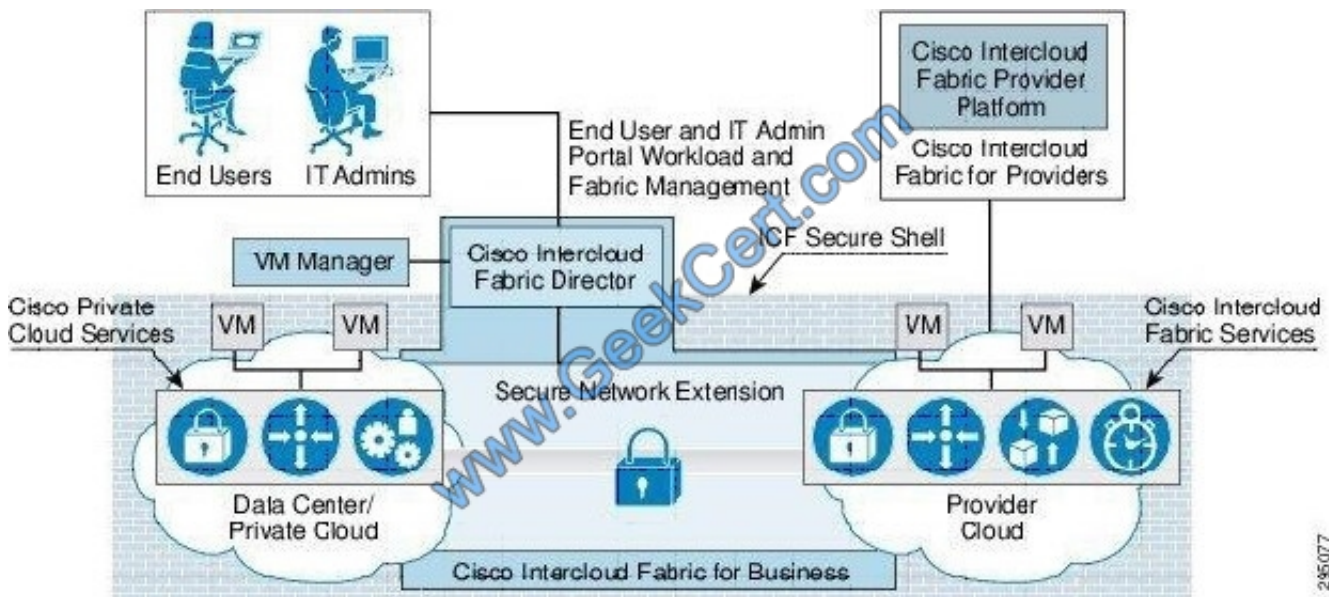
[http://www.cisco.com/c/en/us/td/docs/solutions/Hybrid\\_Cloud/Intercloud/Intercloud\\_Fabric/Intercloud\\_Fabric\\_2.html](http://www.cisco.com/c/en/us/td/docs/solutions/Hybrid_Cloud/Intercloud/Intercloud_Fabric/Intercloud_Fabric_2.html)  
Cisco Intercloud Fabric Secure Extension All data in motion is cryptographically isolated and encrypted within the Cisco Intercloud Fabric Secure Extender. This data includes traffic exchanged between the private and public clouds (site to site) and the virtual machines running in the

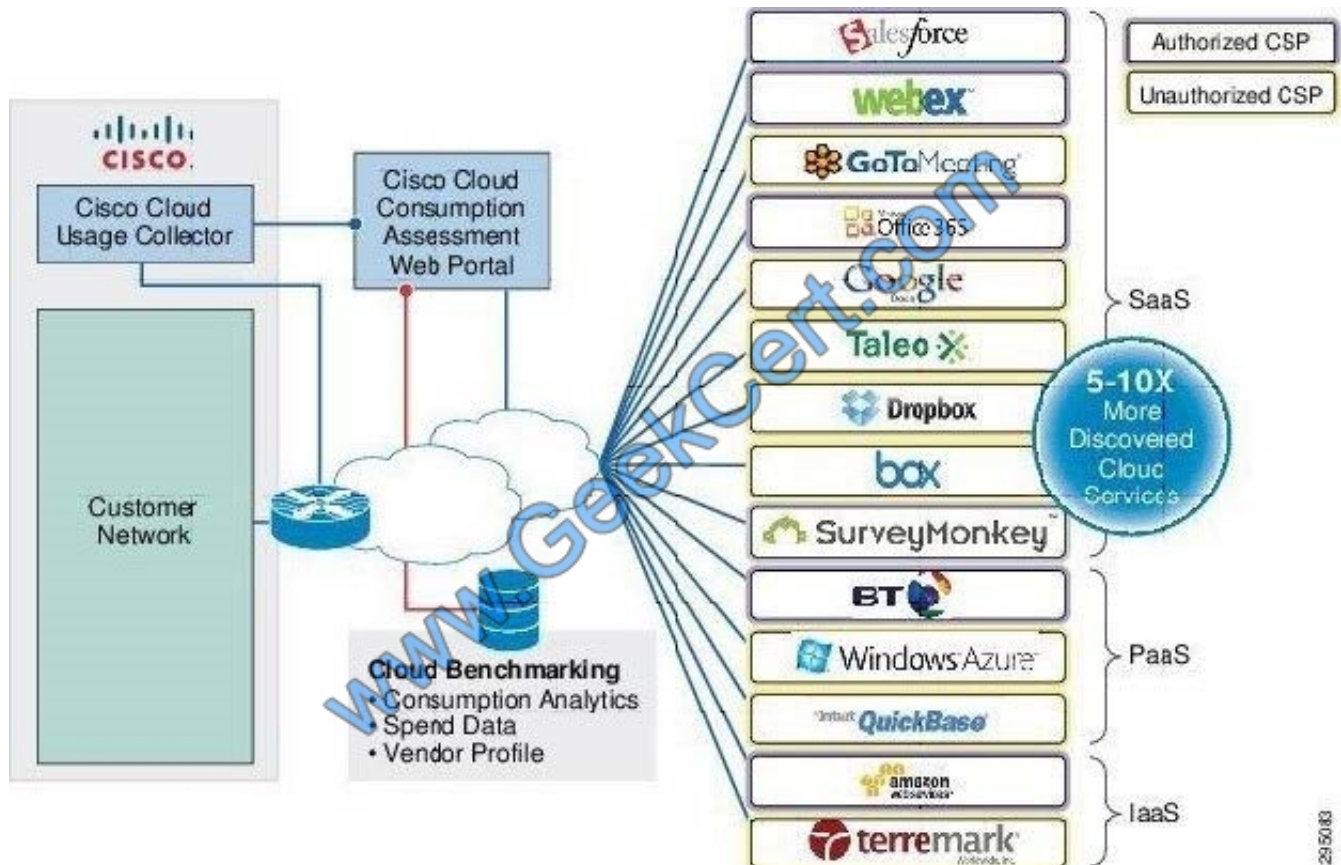
cloud (VM to VM). A Datagram Transport Layer Security (DTLS) tunnel is created between these endpoints to more securely transmit this data. DTLS is a User Datagram Protocol (UDP)-based highly secure transmission protocol. The Cisco

Intercloud Fabric Extender always initiates the creation of a DTLS tunnel.

The encryption algorithm used is configurable, and different encryption strengths can be used depending on the level of security desired. The encryption algorithm used is configurable, and different encryption strengths can be used

depending on the level of security desired.





### QUESTION 5

What doc client provisioning resources for desktops and laptops consist of in Cisco ISE?

- A. native agents only
- B. posture and native supplicant profiles
- C. compliance and posture agents
- D. compliance and native supplicant profiles

Correct Answer: C

[Latest 400-351 Dumps](#)

[400-351 Study Guide](#)

[400-351 Brindumps](#)



To Read the [Whole Q&As](#), please purchase the [Complete Version](#) from [Our website](#).

## Try our product !

100% Guaranteed Success  
100% Money Back Guarantee  
365 Days Free Update  
Instant Download After Purchase  
24x7 Customer Support  
Average 99.9% Success Rate  
More than 800,000 Satisfied Customers Worldwide  
Multi-Platform capabilities - [Windows](#), [Mac](#), [Android](#), [iPhone](#), [iPod](#), [iPad](#), [Kindle](#)

We provide exam PDF and VCE of Cisco, Microsoft, IBM, CompTIA, Oracle and other IT Certifications. You can view Vendor list of All Certification Exams offered:

<https://www.geekcert.com/allproducts>

## Need Help

Please provide as much detail as possible so we can best assist you.  
To update a previously submitted ticket:



 <p><b>One Year Free Update</b> Free update is available within One Year after your purchase. After One Year, you will get 50% discounts for updating. And we are proud to boast a 24/7 efficient Customer Support system via Email.</p>	 <p><b>Money Back Guarantee</b> To ensure that you are spending on quality products, we provide 100% money back guarantee for 30 days from the date of purchase.</p>	 <p><b>Security &amp; Privacy</b> We respect customer privacy. We use McAfee's security service to provide you with utmost security for your personal information &amp; peace of mind.</p>
---	---	--

Any charges made through this site will appear as Global Simulators Limited.  
All trademarks are the property of their respective owners.  
Copyright © geekcert, All Rights Reserved.