



# 412-79V10<sup>Q&As</sup>

EC-Council Certified Security Analyst (ECSA) V10

**Pass EC-COUNCIL 412-79V10 Exam with 100% Guarantee**

Free Download Real Questions & Answers **PDF** and **VCE** file from:

<https://www.geekcert.com/412-79v10.html>

100% Passing Guarantee  
100% Money Back Assurance

Following Questions and Answers are all new published by EC-COUNCIL Official Exam Center

-  **Instant Download** After Purchase
-  **100% Money Back** Guarantee
-  **365 Days** Free Update
-  **800,000+** Satisfied Customers





### QUESTION 1

A Demilitarized Zone (DMZ) is a computer host or small network inserted as a "neutral zone" between a company's private network and the outside public network. Usage of a protocol within a DMZ environment is highly variable based on the specific needs of an organization. Privilege escalation, system is compromised when the code runs under root credentials, and DoS attacks are the basic weakness of which one of the following Protocol?

- A. Lightweight Directory Access Protocol (LDAP)
- B. Simple Network Management Protocol (SNMP)
- C. Telnet
- D. Secure Shell (SSH)

Correct Answer: D

---

### QUESTION 2

What is the maximum value of a "tinyint" field in most database systems?

- A. 222
- B. 224 or more
- C. 240 or less
- D. 225 or more

Correct Answer: D

Reference: [http://books.google.com.pk/books?id=JUclAAAAQBAJandpg=SA3-PA3andlpg=SA3PA3anddq=maximum+value+of+a+%E2%80%9Ctinyint%E2%80%9D+field+in+most+database+systemsandsource=blandots=NscGk-R5randsig=1hMOYByxt7ebRJ4UEjbpXMijTQsandhl=enandsa=Xandei=pvgeVJnTCNDkaI\\_fgugOandved=0CDYQ6AEwAw#v=onepageanddq=maximum%20value%20of%20a%20%E2%80%9Ctinyint%E2%80%9D%20field%20in%20most%20database%20systemsandf=false](http://books.google.com.pk/books?id=JUclAAAAQBAJandpg=SA3-PA3andlpg=SA3PA3anddq=maximum+value+of+a+%E2%80%9Ctinyint%E2%80%9D+field+in+most+database+systemsandsource=blandots=NscGk-R5randsig=1hMOYByxt7ebRJ4UEjbpXMijTQsandhl=enandsa=Xandei=pvgeVJnTCNDkaI_fgugOandved=0CDYQ6AEwAw#v=onepageanddq=maximum%20value%20of%20a%20%E2%80%9Ctinyint%E2%80%9D%20field%20in%20most%20database%20systemsandf=false)

---

### QUESTION 3

In the example of a /etc/passwd file below, what does the bold letter string indicate?

```
nomad:HrLnrZ3VS3TF2:501:100: Simple Nomad:/home/nomad:/bin/bash
```

- A. Maximum number of days the password is valid
- B. Group number
- C. GECOS information
- D. User number



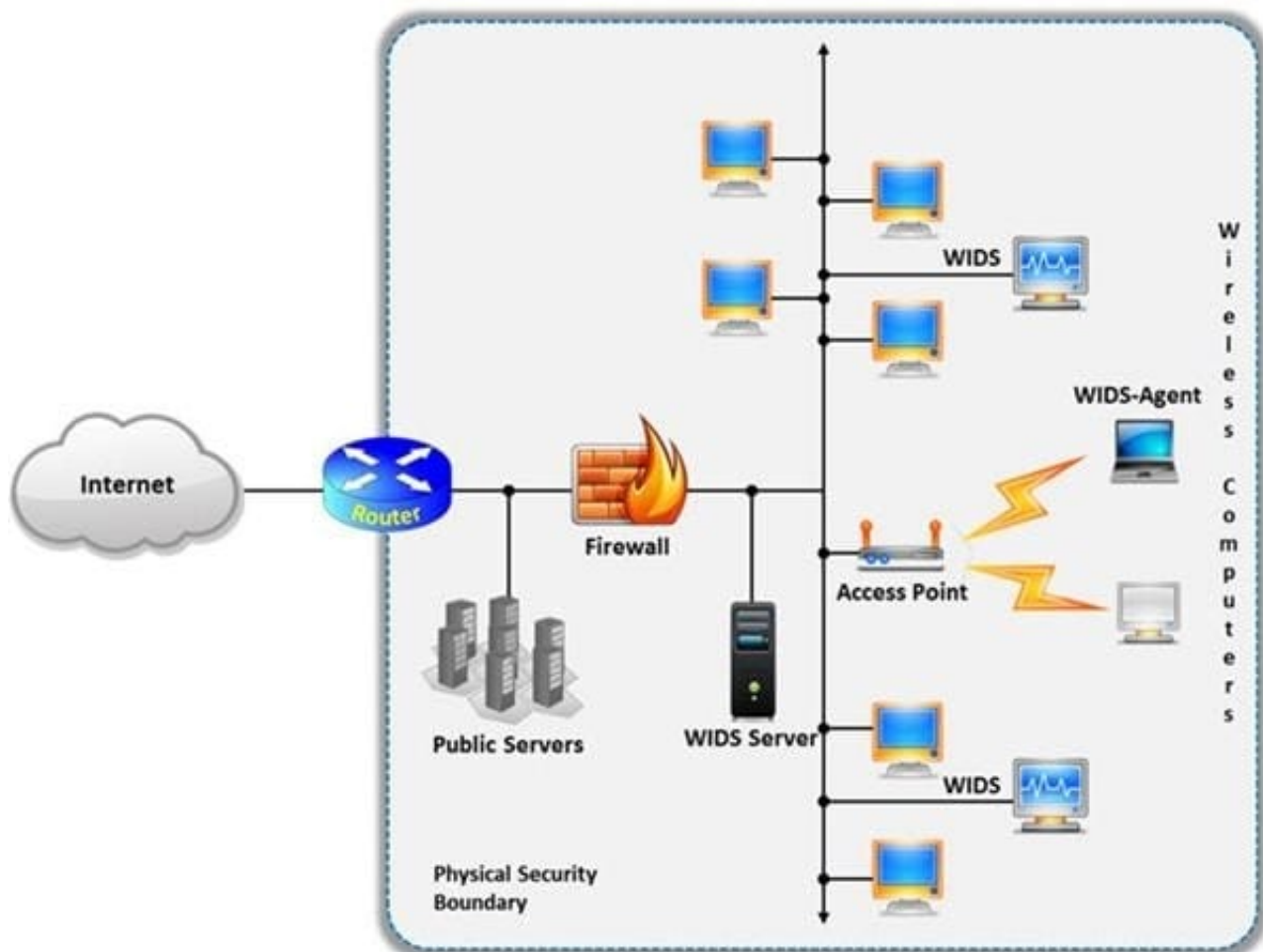
Correct Answer: D

#### QUESTION 4

A wireless intrusion detection system (WIDS) monitors the radio spectrum for the presence of unauthorized, rogue access points and the use of wireless attack tools. The system monitors the radio spectrum used by wireless LANs, and immediately alerts a systems administrator whenever a rogue access point is detected.

Conventionally it is achieved by comparing the MAC address of the participating wireless devices.

Which of the following attacks can be detected with the help of wireless intrusion detection system (WIDS)?



- A. Social engineering
- B. SQL injection
- C. Parameter tampering
- D. Man-in-the-middle attack

Correct Answer: D

Reference: [http://www.infosecwriters.com/text\\_resources/pdf/Wireless\\_IDS\\_JDixon.pdf](http://www.infosecwriters.com/text_resources/pdf/Wireless_IDS_JDixon.pdf) (page 5)



### QUESTION 5

Which of the following statements is true about the LM hash?

- A. Disabled in Windows Vista and 7 OSs
- B. Separated into two 8-character strings
- C. Letters are converted to the lowercase
- D. Padded with NULL to 16 characters

Correct Answer: A

Reference: [http://www.onlinehashcrack.com/how\\_to\\_crack\\_windows\\_passwords.php](http://www.onlinehashcrack.com/how_to_crack_windows_passwords.php) (first paragraph of the page)

[412-79V10 VCE Dumps](#)

[412-79V10 Study Guide](#)

[412-79V10 Braindumps](#)