



4A0-100^{Q&As}

Alcatel-Lucent Scalable IP Networks

Pass Alcatel-Lucent 4A0-100 Exam with 100% Guarantee

Free Download Real Questions & Answers **PDF** and **VCE** file from:

<https://www.geekcert.com/4a0-100.html>

100% Passing Guarantee
100% Money Back Assurance

Following Questions and Answers are all new published by Alcatel-Lucent Official Exam Center

-  **Instant Download** After Purchase
-  **100% Money Back** Guarantee
-  **365 Days** Free Update
-  **800,000+** Satisfied Customers





QUESTION 1

A network with address 208.40.224.0/24 is divided into /28 subnets. What is the network address of the third subnet?

- A. 208.40.224.16/28
- B. 208.40.224.32/28
- C. 208.40.224.48/28
- D. 208.40.224.64/28

Correct Answer: C

QUESTION 2

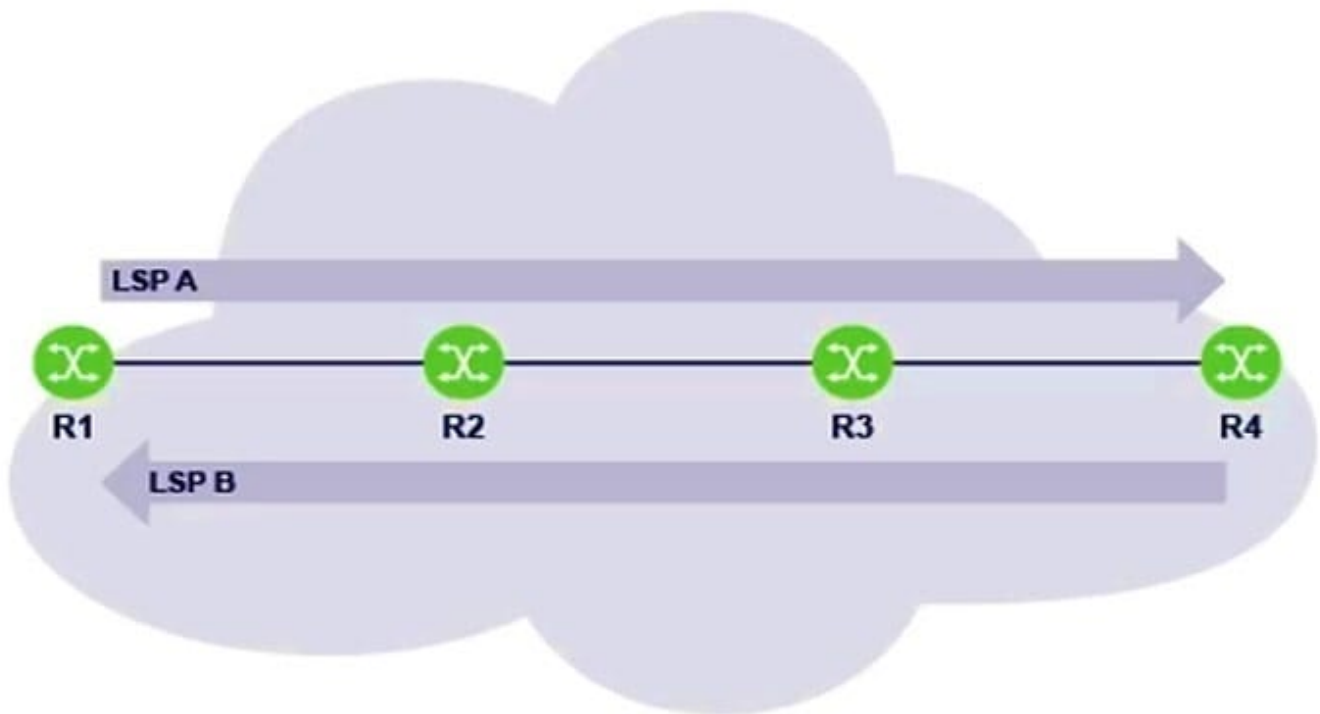
What information is used to separate VLANs on a VLAN trunk that connects multiple VLANs?

- A. The VLAN tag
- B. The IP Header
- C. The VID
- D. The Priority Value

Correct Answer: A

QUESTION 3

Which of the MPLS routers is responsible for pushing new labels for LSP A and LSP B?



- A. Router R1 pushes labels for both LSP A and LSP B.
- B. Router R4 pushes labels for both LSP A and LSP B.
- C. Router R1 pushes labels for LSP A, while router R4 pushes labels for LSP B.
- D. Router R4 pushes labels for LSP A, while router R1 pushes labels for LSP B.

Correct Answer: C

QUESTION 4

What is available for auto completion of commands within the CLI on the Nokia 7750 SR Service Router?

- A. Type the first letters of the command, then press Ctrl C
- B. Type the first letters of the command, then press Esc
- C. Type the first letters of the command, then press Tab
- D. Type the first letters of the command, then type ?

Correct Answer: C

QUESTION 5

Which of the following best describes a repeater?



- A. A passive device simply used to connect two or more cables. Does not generate or amplify any signals.
- B. A device that receives and retransmits a signal out its ports, but does not do any Layer 2 analysis of the data.
- C. A device that receives a signal and based on the Layer 2 destination address, makes a decision on which ports the signal should be retransmitted.
- D. A device that receives a signal and based on the Layer 3 destination address, makes a decision on which ports the signal should be retransmitted.

Correct Answer: B

[Latest 4A0-100 Dumps](#)

[4A0-100 Practice Test](#)

[4A0-100 Braindumps](#)