



4A0-101^{Q&As}

Alcatel-Lucent Interior Routing Protocols and High Availability

Pass Alcatel-Lucent 4A0-101 Exam with 100% Guarantee

Free Download Real Questions & Answers **PDF** and **VCE** file from:

<https://www.geekcert.com/4a0-101.html>

100% Passing Guarantee
100% Money Back Assurance

Following Questions and Answers are all new published by Alcatel-Lucent Official Exam Center

-  **Instant Download** After Purchase
-  **100% Money Back** Guarantee
-  **365 Days** Free Update
-  **800,000+** Satisfied Customers





QUESTION 1

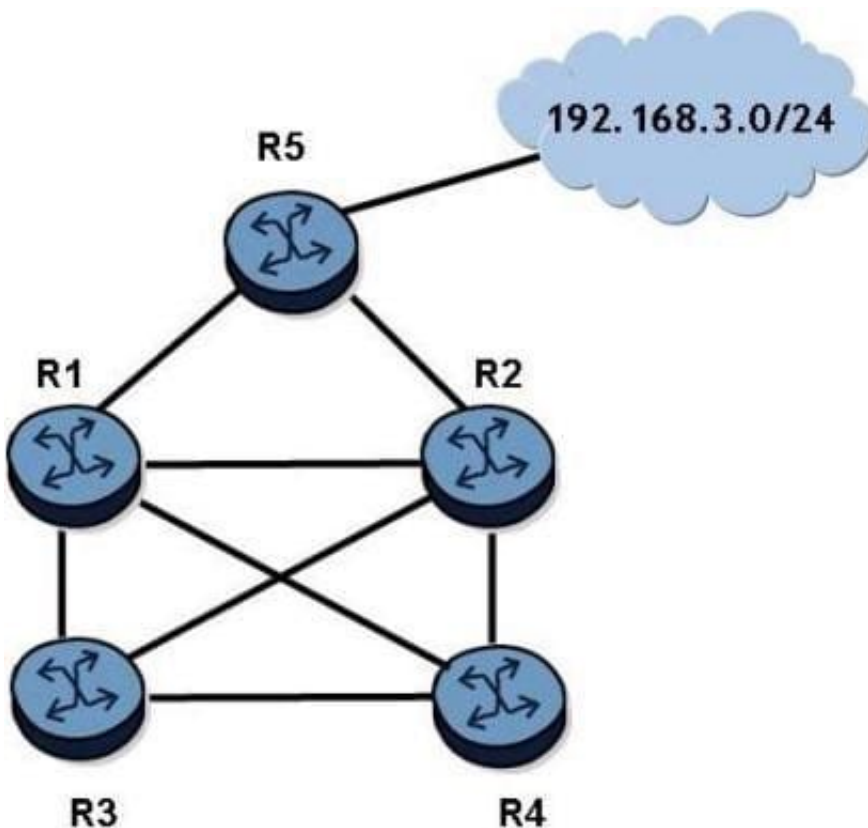
When a router performs the SPF calculation, which router is used as the root of the shortest path tree?

- A. The router with the least number of links.
- B. The router with the lowest router ID.
- C. The router's closest neighbor.
- D. The router doing the calculation.

Correct Answer: D

QUESTION 2

Click on the exhibit.



OSPF is operational on all links in the network diagram, all routers are the same cost, and all routers are configured with an ECMP value of 4. Router R5 advertises the prefix 192.168.3.0/24 into OSPF.

How many entries for prefix 192.168.3.0/24 will be in router R3's routing table?

- A. 0
- B. 1



C. 2

D. 3

E. 4

Correct Answer: C

QUESTION 3

Exhibit Given the two configurations shown, identify the two incorrect statements below: (Choose two)

```
ALA-1# configure router
ALA-1>config>router# router-id 138.120.54.73
ALA-1>config>router# ospf
ALA-1>config>router>ospf$ area 0.0.0.0
ALA-1>config>router>ospf>area$ interface ALA-2
ALA-1>config>router>ospf>area>if# interface-type broadcast
ALA-1>config>router>ospf>area>if# metric 100
ALA-1>config>router>ospf>area>if# priority 25
ALA-1>config>router>ospf>area>if# exit
```

```
•ALA-2# configure router
•ALA-2>config>router# router-id 138.120.54.72
•ALA-2>config>router# ospf
•ALA-2>config>router>ospf$ area 0.0.0.0
•ALA-2>config>router>ospf>area$ interface ALA-1
•ALA-2>config>router>ospf>area>if# interface-type point-to-point
•ALA-2>config>router>ospf>area>if# metric 10
•ALA-2>config>router>ospf>area>if# priority 25
•ALA-2>config>router>ospf>area>if# exit
•ALA-2>config>router>ospf>area# interface system
```

- A. Both routers will generate OSPF Hello packets.
- B. The system interface is missing in one configuration so OSPF will not operate correctly.
- C. The interface type settings differ, but OSPF will still operate correctly.

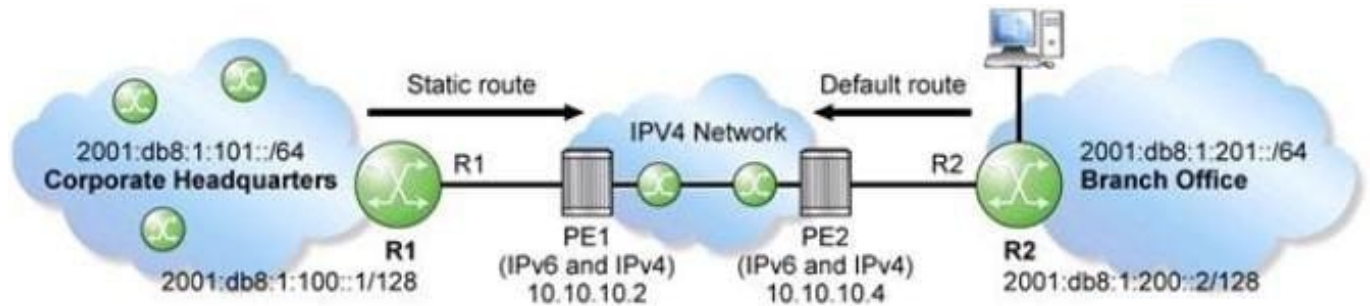


D. Metric values differ, but this does not prevent OSPF operation.

Correct Answer: BC

QUESTION 4

Click on the exhibit.



A service provider is deploying a 6 over 4 tunnel to connect a customer's corporate IPv6 network to all devices at the branch office as shown in the exhibit. Which command is used to create the route to the branch office network on PE1?

- A. Configure router static-route 2001:DB8:1:201::/64 indirect 10.10.10.4
- B. Configure router static-route 2001:DB8:1:201::/64 indirect 2001:DB8:1:200::2
- C. Configure router static-route 2001:DB8:1:200::/56 indirect 10.10.10.4
- D. Configure router static-route 2001:DB8:1:200::/56 indirect 2001:DB8:1:200::2

Correct Answer: C

QUESTION 5

What is wrong with the following filter configuration from an Alcatel-Lucent 7750 SR?

```
RTR-B# configure filter RTR-B>config>filter# ip-filter 1 create RTR-B>config>filter>ip-filter$ entry 1 create RTR-B>config>filter>ip-filter>entry$ match src-ip 172.2.0.0/16 RTR-B>config>filter>ip-filter>entry# action drop RTR-B# configure router interface toRTR-A RTR-B>config>router>if# egress RTR-B>config>router>if>egress# filter ip 1
```

- A. There is nothing wrong with this filter
- B. The filter should be applied to the ingress and not the egress.
- C. The mask cannot be a "/" value, it must be in dotted decimal.
- D. All traffic is being blocked

Correct Answer: D