



4A0-102^{Q&As}

Alcatel-Lucent Border Gateway Protocol

Pass Alcatel-Lucent 4A0-102 Exam with 100% Guarantee

Free Download Real Questions & Answers **PDF** and **VCE** file from:

<https://www.geekcert.com/4a0-102.html>

100% Passing Guarantee
100% Money Back Assurance

Following Questions and Answers are all new published by Alcatel-Lucent Official Exam Center

- ⚙️ **Instant Download** After Purchase
- ⚙️ **100% Money Back** Guarantee
- ⚙️ **365 Days** Free Update
- ⚙️ **800,000+** Satisfied Customers





QUESTION 1

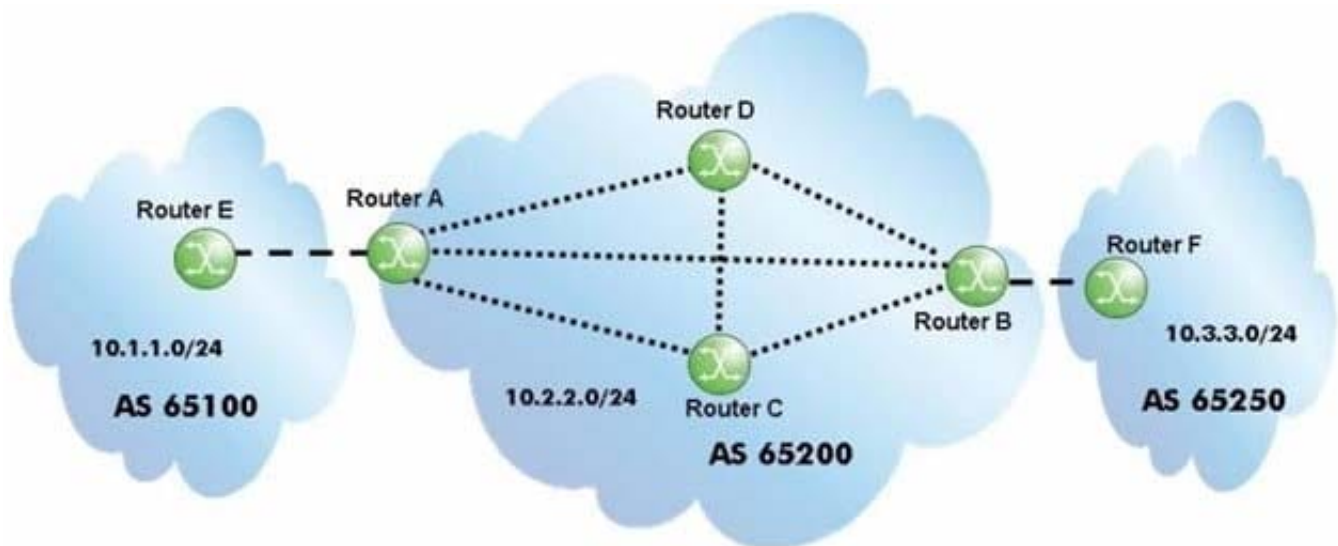
Which of the following statements regarding BGP route selection is TRUE?

- A. Lower local preference is preferred over higher local preference.
- B. Higher MED is preferred over lower MED.
- C. Higher origin code is preferred over lower origin code.
- D. Lower BGP router ID is preferred over higher BGP router ID.

Correct Answer: D

QUESTION 2

Click the exhibit.



After router A receives the BGP update for the 10.3.3.0/24 prefix, which routers will the route be propagated to?

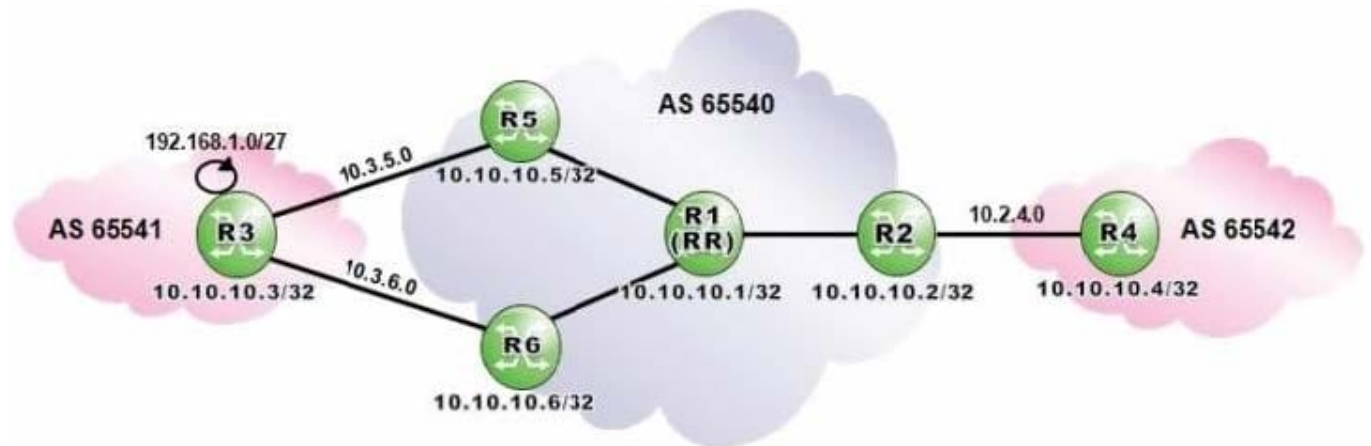
- A. All routers with which it has a BGP session.
- B. All routers with which it has a BGP session, except the router it received the update from, which is router B.
- C. All routers with which it has a BGP session, except the router it received the update from, which is router C.
- D. All routers with which it has a BGP session, except the router it received the update from, which is router D.
- E. Only eBGP neighbors.

Correct Answer: E



QUESTION 3

Click the exhibit.



Router R1 is a route reflector with clients R2, R5 and R6. Router R3 advertises the prefix 192.168.1.0/27 to routers R5 and R6. Assuming that routers R1, R2 and R4 are configured with "add-paths ipv4 send 2 receive", what is the expected output of "show router bgp routes" when executed on router R2?

- A. Option A
- B. Option B
- C. Option C
- D. Option D

Correct Answer: A

QUESTION 4

The following policies are configured and exported using "export "Policy-1" "Policy-2"". Assuming both "Client-1" and "Client-2" are properly defined on the router, which routes are advertised?



```
prefix-list "Client-1"  
  prefix 192.168.1.0/29 exact  
exit  
prefix-list "Client-2"  
  prefix 192.168.2.0/29 exact  
exit  
policy-statement "Policy-1"  
  entry 10  
    from  
      prefix-list "Client-1"  
    exit  
    action accept  
  exit  
exit  
default-action accept  
exit  
policy-statement "Policy-2"  
  entry 10  
    from  
      prefix-list "Client-2"  
    exit  
    action accept  
  exit  
exit  
default-action reject  
exit
```

- A. Client-1 routes only.
- B. Client-2 routes only.
- C. Client-1 and Client-2 routes.
- D. Neither Client-1 nor Client-2 routes.

Correct Answer: C

QUESTION 5

Assuming that "client1" and "client2" are directly-connected networks, what is the result of executing the following BGP policy?



```
entry 10
  from
    protocol direct
  exit
  action accept
    community add "West"
  exit
exit
entry 20
  from
    prefix-list "client1"
  exit
  action accept
    community add "North"
  exit
exit
entry 30
  from
    prefix-list "client2"
  exit
  action accept
    community add "South"
  exit
exit
default-action reject
```

- A. "client2" routes will be tagged with communities "West" and "North".
- B. "client2" routes will be tagged with communities "West", "North" and "South".
- C. "client2" routes will be tagged with community "West".
- D. "client2" routes will be tagged with community "South".

Correct Answer: C

[Latest 4A0-102 Dumps](#)

[4A0-102 PDF Dumps](#)

[4A0-102 VCE Dumps](#)