



# 4A0-102<sup>Q&As</sup>

Alcatel-Lucent Border Gateway Protocol

## Pass Alcatel-Lucent 4A0-102 Exam with 100% Guarantee

Free Download Real Questions & Answers **PDF** and **VCE** file from:

<https://www.geekcert.com/4a0-102.html>

100% Passing Guarantee  
100% Money Back Assurance

Following Questions and Answers are all new published by Alcatel-Lucent Official Exam Center

-  **Instant Download** After Purchase
-  **100% Money Back** Guarantee
-  **365 Days** Free Update
-  **800,000+** Satisfied Customers





### QUESTION 1

Assuming that "client1" and "client2" are directly-connected networks, what is the result of executing the following BGP export policy?

```
entry 10
  from
    protocol direct
  exit
  action accept
    community add "North"
  exit
exit
entry 20
  from
    prefix-list "client1"
  exit
  action accept
    community add "West"
  exit
exit
entry 30
  from
    prefix-list "client2"
  exit
  action accept
    community add "East"
  exit
exit
default-action reject
```

- A. Only entry 10 is executed for "client1" and "client2".
- B. Entries 10 and 20 are executed for "client1", and entries 10 and 30 are executed for "client2".
- C. Entries 10 and 20 are executed for "client1", and entries 10, 20 and 30 are executed for "client2".
- D. Entry 10 is executed for directly-connected routes, entry 20 for "client1" and entry 30 for "client2".

Correct Answer: A

---

### QUESTION 2

Which of the following best describes the relationship between locally configured policies and the direction of traffic?



- A. Import policies affect the way the local AS receives traffic, while export policies affect the way it sends traffic.
- B. Import policies affect the way the local AS sends traffic, while export policies affect the way it receives traffic.
- C. Both import and export policies affect the way the local AS receives traffic, but not the way it sends traffic.
- D. Both import and export policies affect the way the local AS sends traffic, but not the way it receives traffic.

Correct Answer: B

**QUESTION 3**

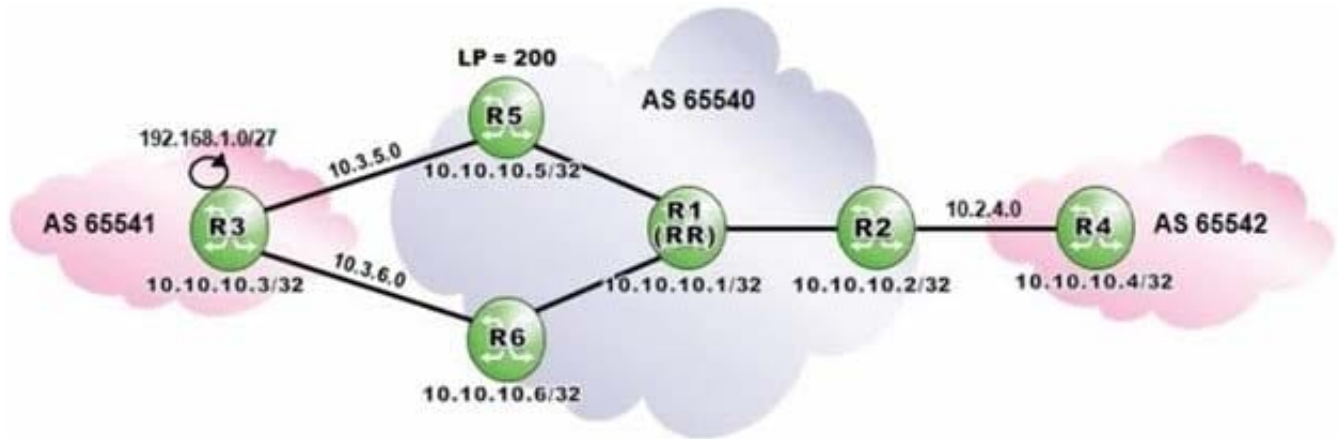
Which of the following parameters does NOT have to match for an iBGP session to be successfully established?

- A. BGP version number.
- B. The local AS number.
- C. The Hold Time.
- D. Authentication.

Correct Answer: C

**QUESTION 4**

Click the exhibit.



Router R1 is a route reflector with clients R2, R5 and R6. Prefixes advertised by router R5 have a local preference of 200. Router R3 advertises the prefix 192.168.1.0/27 to routers R5 and R6.

Assuming that none of the routers in AS 65540 is configured with "advertise-external", what is the expected output of "show router bgp routes" on router R2?

- A. Option A
- B. Option B



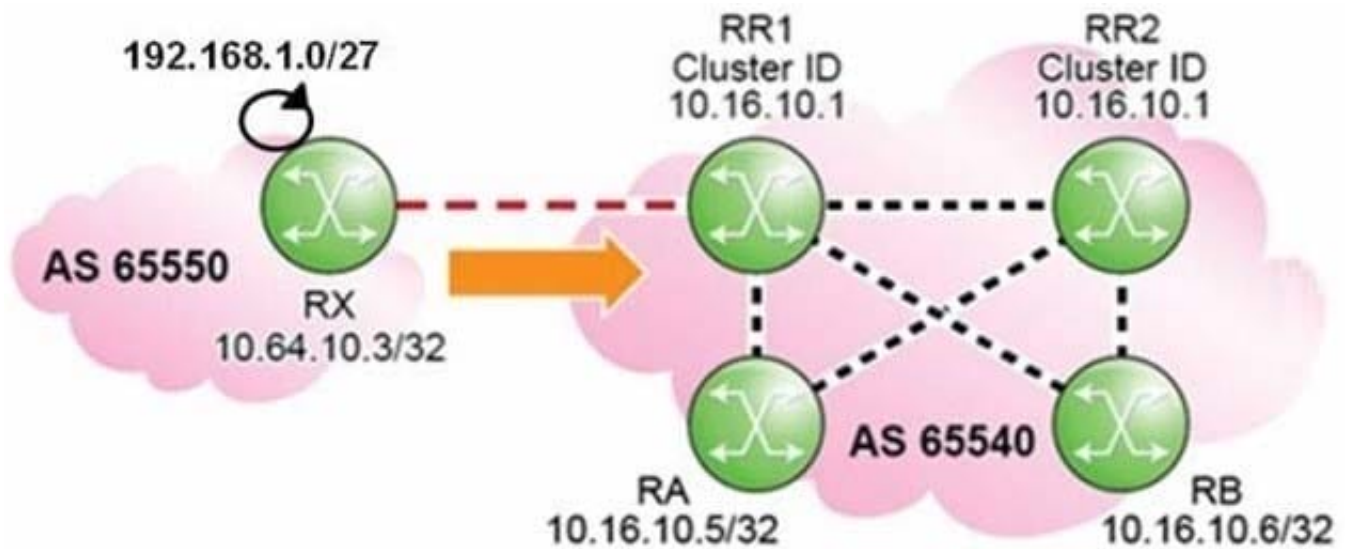
C. Option C

D. Option D

Correct Answer: A

### QUESTION 5

Click the exhibit.



Routers RR1 and RR2 are route reflectors with the same Cluster-ID. When the update for prefix 192.168.1.0/27 is received at router RA, what are the Originator\_ID and Cluster\_List attributes?

- A. Originator\_ID of RR1; and Cluster\_List of 10.16.10.1.
- B. Originator\_ID of RX; and Cluster\_List of 10.16.10.1.
- C. Originator\_ID of RR1; and the Cluster\_List is not set.
- D. Neither the Originator\_ID nor the Cluster\_List is set.

Correct Answer: D

[4A0-102 VCE Dumps](#)

[4A0-102 Practice Test](#)

[4A0-102 Braindumps](#)