



4A0-102^{Q&As}

Alcatel-Lucent Border Gateway Protocol

Pass Alcatel-Lucent 4A0-102 Exam with 100% Guarantee

Free Download Real Questions & Answers **PDF** and **VCE** file from:

<https://www.geekcert.com/4a0-102.html>

100% Passing Guarantee
100% Money Back Assurance

Following Questions and Answers are all new published by Alcatel-Lucent Official Exam Center

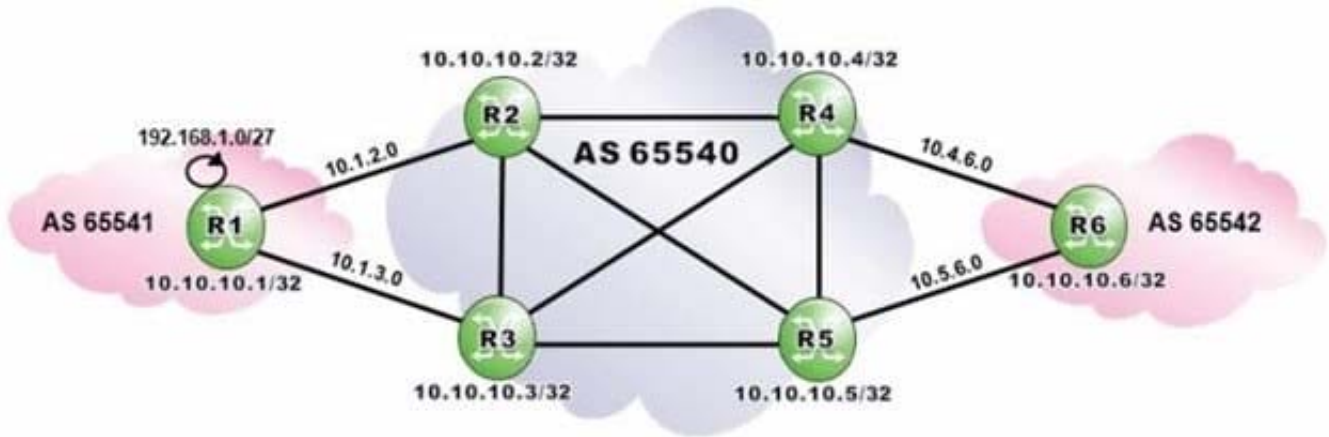
-  **Instant Download** After Purchase
-  **100% Money Back** Guarantee
-  **365 Days** Free Update
-  **800,000+** Satisfied Customers





QUESTION 1

Click the exhibit.



AS 65540 routers are iBGP fully-meshed. Assume routers R4, R5 and R6 are configured with "addpaths ipv4 send 2 receive". Which routes to 192.168.0.1/27 is router R6 expected to have in its BGP routing table?

- A. Two routes from router R4.
- B. Two routes from router R5.
- C. Two routes; one from router R4 and one from router R5.
- D. Four routes; two from router R4 and two from router R5.

Correct Answer: D

QUESTION 2

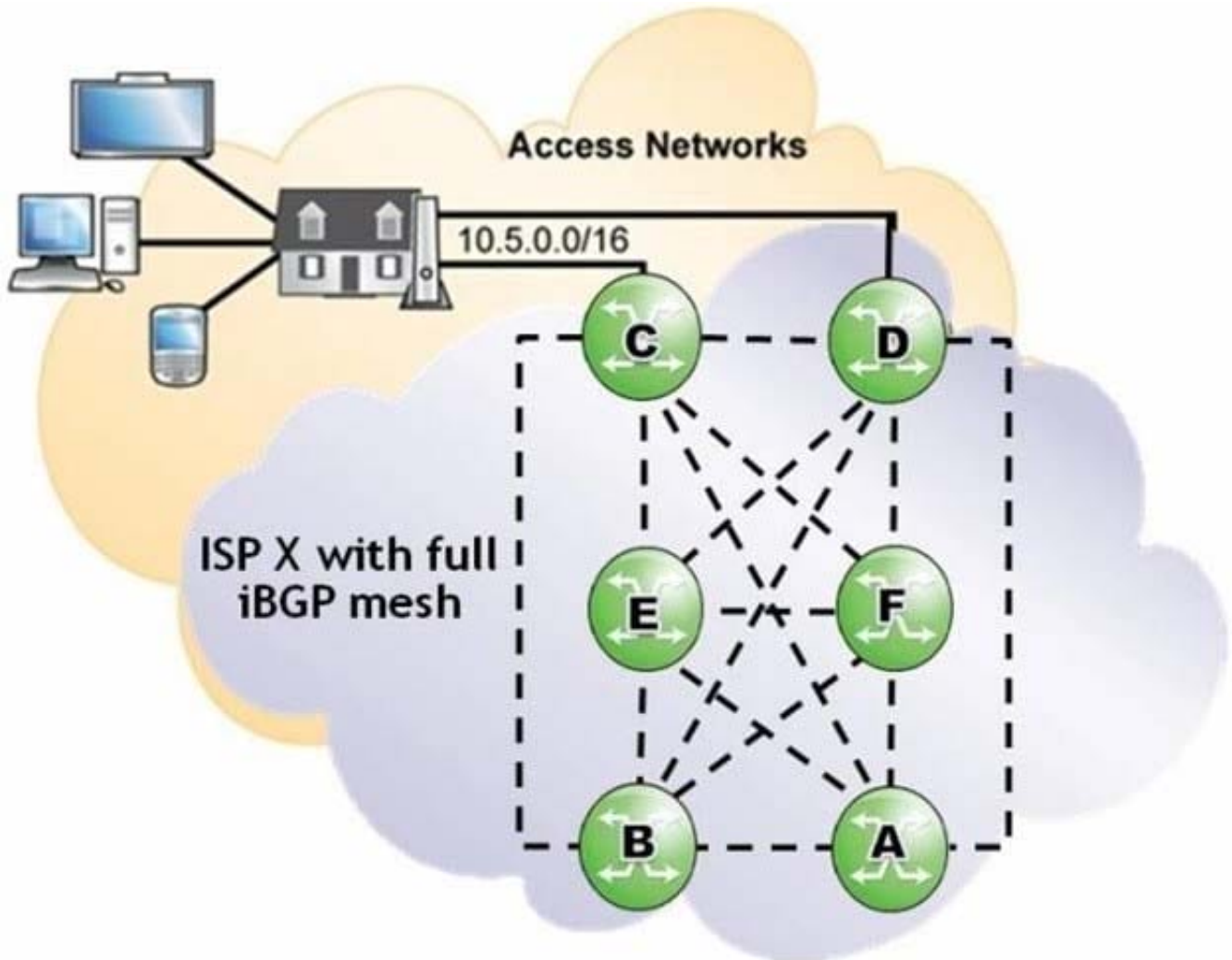
Which of the following statements regarding the Internet is FALSE?

- A. It is a global network relying on interconnections provided by Internet service providers.
- B. It is a continuous and interconnected set of public IP networks, advertised and shared across the globe.
- C. It is a settlement-free global network that provides interconnection between Internet service providers.
- D. It is a network that allows any Internet service provider to reach every other Internet service provider in the world.

Correct Answer: C

QUESTION 3

Click the exhibit.



Considering that both routers C and D are advertising the eBGP learned prefix 10.5.0.0/16 into ISP X, which of the following best describes the route advertisement within ISP X?

- A. Router C sends the update to routers E and F only.
- B. Router C sends the update to routers D, E and F.
- C. Router C sends the update to routers A, B, E and F.
- D. Router C sends the update to routers A, B, D, E and F.

Correct Answer: D

QUESTION 4

A confederated AS is comprised of three members. One member is comprised of 4 routers, while the other two members are comprised of 3 routers each. Assuming member ASs are fully meshed and use full mesh iBGP, what is the required number of BGP sessions within the confederation?

- A. 12



B. 13

C. 14

D. 15

Correct Answer: D

QUESTION 5

Which of the following is the minimum requirement for an AS to be considered multi-homed?

A. A single connection to a single service provider.

B. Two connections to a single service provider.

C. Two connections to two different service providers.

D. Multiple connections to different service providers.

Correct Answer: B

[4A0-102 PDF Dumps](#)

[4A0-102 VCE Dumps](#)

[4A0-102 Practice Test](#)