



4A0-103^{Q&As}

Alcatel-Lucent Multiprotocol Label Switching

Pass Alcatel-Lucent 4A0-103 Exam with 100% Guarantee

Free Download Real Questions & Answers **PDF** and **VCE** file from:

<https://www.geekcert.com/4a0-103.html>

100% Passing Guarantee
100% Money Back Assurance

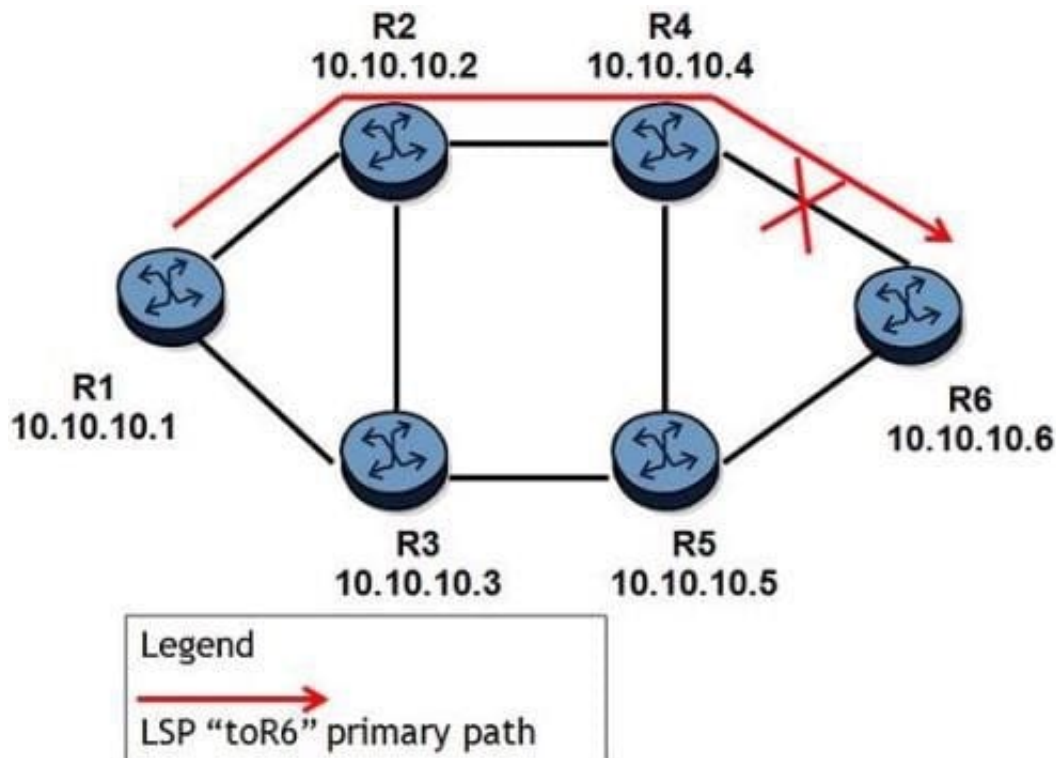
Following Questions and Answers are all new published by Alcatel-Lucent Official Exam Center

- ⚙️ **Instant Download** After Purchase
- ⚙️ **100% Money Back** Guarantee
- ⚙️ **365 Days** Free Update
- ⚙️ **800,000+** Satisfied Customers



**QUESTION 1**

Click on the exhibit.



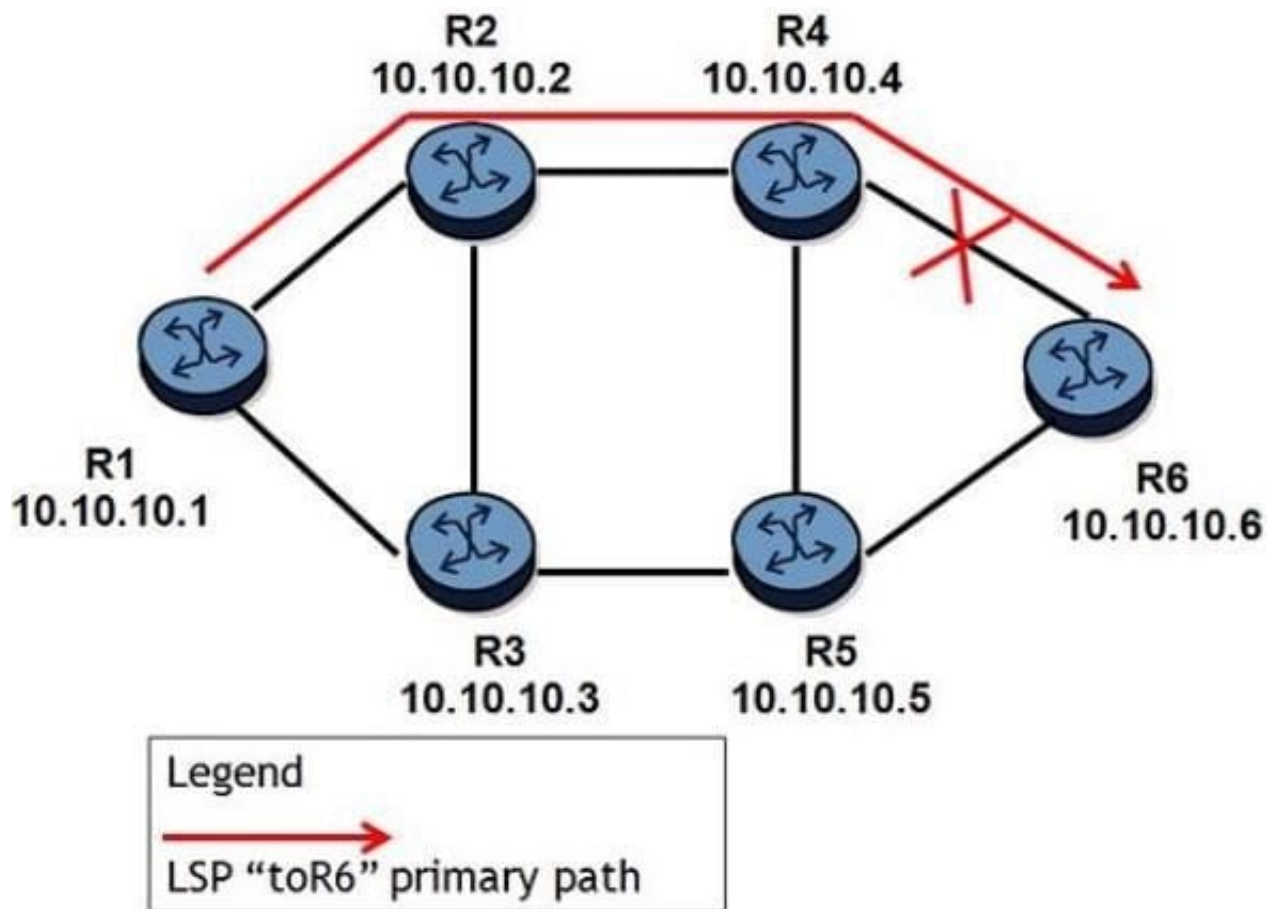
An LSP path is established on router R1 toward router R6. If the link between routers R4 and R6 goes down, which of the following is the quickest way for service recovery?

- A. Router R1 updates its FIB after a new SPF calculation.
- B. Router R1 switches to a secondary path.
- C. Router R4 switches to a FRR path.
- D. Router R4 switches to a standby secondary path.

Correct Answer: C

QUESTION 2

Click on the exhibit.



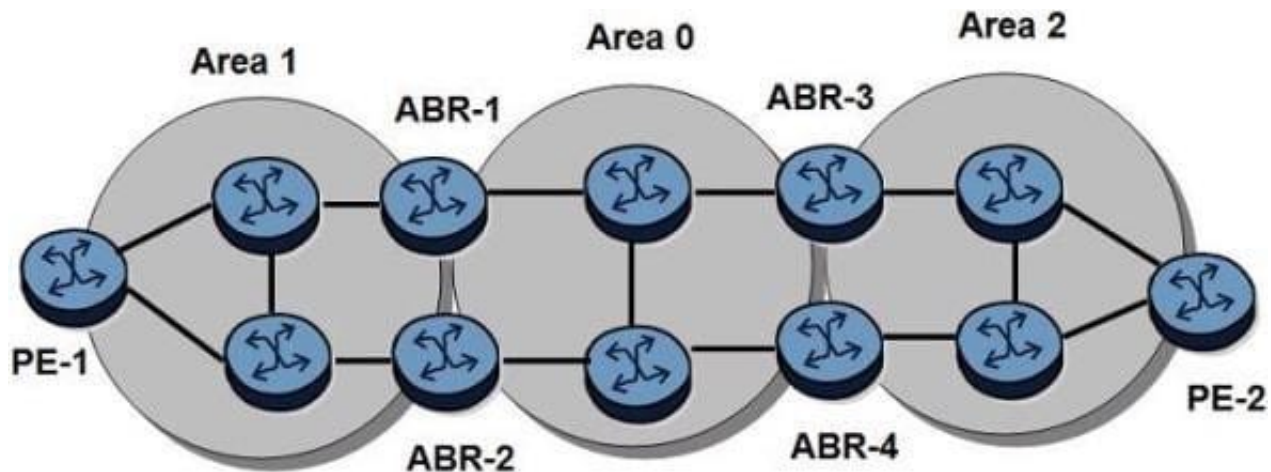
An LSP path is established on router R1 toward router R6. After router R4 detects that the link between routers R4 and R6 goes down, which of the following will affect the failure propagation time?

- A. The time router R4 takes to send a PATH Error message toward the head-end router.
- B. The time router R4 takes to detect RSVP Hello message timeout from router R6.
- C. The time router R4 takes to send a RESV Error message to the head-end router.
- D. The time router R1 takes to signal an alternate path through router R3.

Correct Answer: A

QUESTION 3

Click on the exhibit.



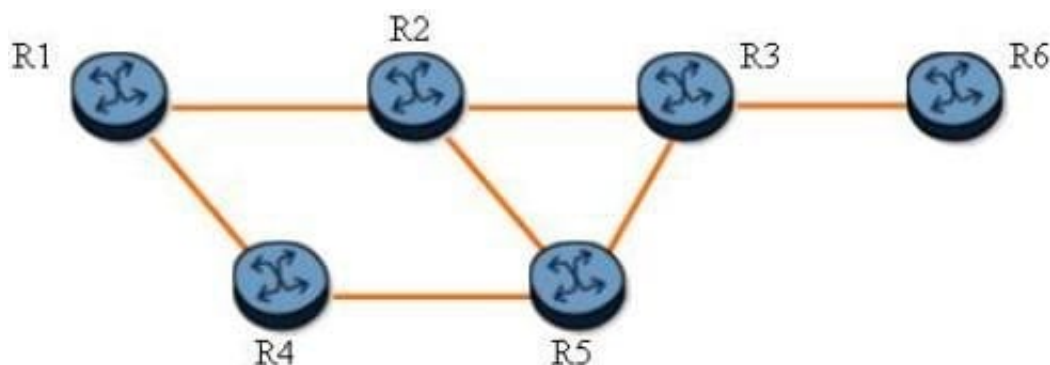
An LDP-over-RSVP tunnel is established between PE-1 and PE-2. Which of the following is NOT required to protect the LDP-over-RSVP tunnel?

- A. PE-1 requires T-LDP sessions to both ABR-1 and ABR-2.
- B. PE-1 requires a full mesh of RSVP-TE LSPs to all routers in area 1.
- C. ABR-1 requires T-LDP sessions to all ABRs in area 0.
- D. PE-1 requires fast reroute enabled on all RSVP-TE LSPs.

Correct Answer: B

QUESTION 4

Click on the exhibit.



Assume that the packet in the original LSP already has two labels.

An LSP traverses the path R1-R2-R3-R6 and facility fast reroute is enabled. If the protected LSP carries one transport label and one service label, how many labels will be on the bypass tunnel if router R2 fails?

- A. 1



B. 2

C. 3

D. 4

Correct Answer: C

QUESTION 5

Which of the following about Alcatel-Lucent 7750 SR command "oam lsp-trace prefix" is FALSE?

- A. The router performs a unidirectional LSP test.
- B. The router collects hop information along the tunnel's path.
- C. The router uses MPLS Echo Request packets that are IP-routed,
- D. The MPLS TTL values are incremented at each request.

Correct Answer: C

[Latest 4A0-103 Dumps](#)

[4A0-103 VCE Dumps](#)

[4A0-103 Study Guide](#)