



4A0-103^{Q&As}

Alcatel-Lucent Multiprotocol Label Switching

Pass Alcatel-Lucent 4A0-103 Exam with 100% Guarantee

Free Download Real Questions & Answers **PDF** and **VCE** file from:

<https://www.geekcert.com/4a0-103.html>

100% Passing Guarantee
100% Money Back Assurance

Following Questions and Answers are all new published by Alcatel-Lucent Official Exam Center

-  **Instant Download** After Purchase
-  **100% Money Back** Guarantee
-  **365 Days** Free Update
-  **800,000+** Satisfied Customers





QUESTION 1

Click on the exhibit.

```
*A:SRC_R3# oam lsp-ping prefix 192.10.1.2/32
LSP-PING 192.10.1.2/32: 80 bytes MPLS payload
Seq=1, send from intf toR1, reply from 10.10.10.2
      udp-data-len=32 ttl=255 rtt=2.45ms rc=3 (EgressRtr)

---- LSP 192.10.1.2/32 PING Statistics ----
1 packets sent, 1 packets received, 0.00% packet loss
round-trip min = 2.45ms, avg = 2.45ms, max = 2.45ms, stddev = 0.000ms
*A:SRC_R3#
```

After the lsp-ping command is executed, which of the following best describe the router's action?

- A. MPLS Echo Request packets are sent unlabeled to the prefix 192.10.1.2.
- B. MPLS Echo Request packets are sent within the LDP tunnel that are signaled for 192.10.1.2.
- C. MPLS Echo Request packets are sent within the RSVP-TE tunnel that are signaled for 192.10.1.2.
- D. MPLS Echo Request packets are sent over TCP.

Correct Answer: B

QUESTION 2

Two directly connected routers set different interface Hello timeout values. Router R1 uses 15 seconds, while router R2 uses 30 seconds. Which of the following best describes the LDP adjacency?

- A. The adjacency forms with the lower timeout value.
- B. The adjacency forms with the higher timeout value.
- C. The adjacency is in init state.
- D. The adjacency times out after 30 seconds.

Correct Answer: A

QUESTION 3

Which of the following regarding label population is TRUE?

- A. Selected labels from the FIB are populated to the LFIB.
- B. Selected labels from the RIB are populated to the FIB.

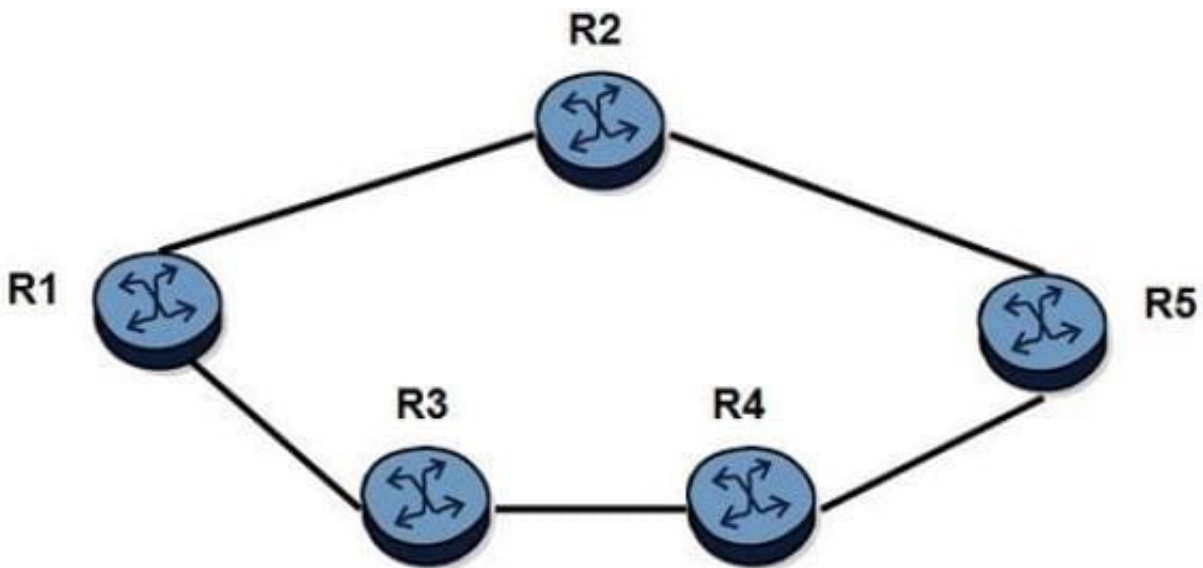


- C. Selected labels from the LIB are populated to the FIB.
- D. Selected labels from the LIB are populated to the LFIB.

Correct Answer: D

QUESTION 4

Click on the exhibit.



Fully loose LSP 1 - Configured with 300Mbps of bandwidth
Fully loose LSP 2 - Configured with 400Mbps of bandwidth

Initially, all links have 800Mbps of unreserved bandwidth. All links are of equal costs. Shared explicit reservation style is used. LSP 1 is signaled first with a setup and hold priority of 2. Then, LSP 2 is signaled with setup and hold priority of 5. Both LSPs go from R1 to R5. Which of the following is TRUE?

- A. LSP 1 will follow R1-R3-R4-R5. LSP 2 will follow R1-R2-R5.
- B. LSP1 will follow R1-R2-R5. LSP 2 will follow R1-R3-R4-R5.
- C. Both LSP 1 and LSP 2 will follow R1-R2-R5.
- D. Both LSP 1 and LSP 2 will follow R1-R3-R4-R5.

Correct Answer: C

QUESTION 5



What is the purpose of a T-LDP session?

- A. It allows link LDP to be configured on the edge devices only.
- B. It is used to signal the transport labels in the provider core.
- C. It allows selective control over which devices are configured for LDP.
- D. It is used to signal the service labels in the provider core.

Correct Answer: D

[4A0-103 PDF Dumps](#)

[4A0-103 VCE Dumps](#)

[4A0-103 Exam Questions](#)