



4A0-104^{Q&As}

Alcatel-Lucent Services Architecture

Pass Alcatel-Lucent 4A0-104 Exam with 100% Guarantee

Free Download Real Questions & Answers **PDF** and **VCE** file from:

<https://www.geekcert.com/4a0-104.html>

100% Passing Guarantee
100% Money Back Assurance

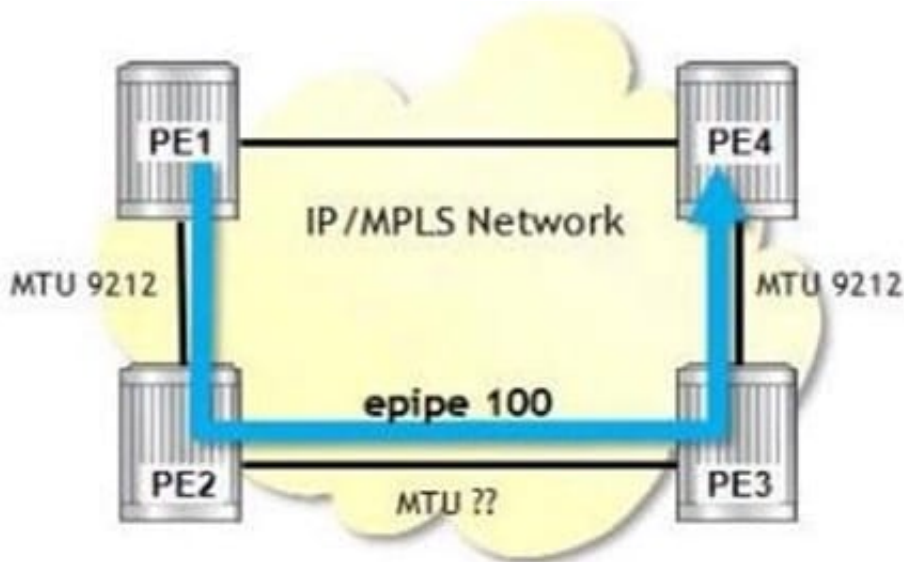
Following Questions and Answers are all new published by Alcatel-Lucent Official Exam Center

- ⚙️ **Instant Download** After Purchase
- ⚙️ **100% Money Back** Guarantee
- ⚙️ **365 Days** Free Update
- ⚙️ **800,000+** Satisfied Customers



**QUESTION 1**

Click the exhibit.



```
PE1# oam sdp-mtu 4 size-inc 1550 1570 step 1
Size      Sent      Response
-----
1550      .           Success
1551      .           Success
1552      .           Success
1553      .           Success
1554      .           Success
1555      .           Success
1556      .           Success
1557      ...        Request Timeout

Maximum Response Size: 1556
```

E-pipe 100 is using an SDP with an LSP that uses the path shown (PE1-PE2-PE3-PE4). Based on the OAM command output, which of the following is FALSE?

- A. The E-pipe can support a maximum MTU size of 1578.
- B. The ports of the link PE2-PE3 have an MTU of 1578.
- C. An svc-ping of the E-pipe will succeed.
- D. If the step size was 2, the maximum response size would be the same.

Correct Answer: A



QUESTION 2

An operator wishes to verify end-to-end connectivity for an individual service. What utility will he or she most likely use?

- A. sdp-ping
- B. lsp-ping
- C. svc-ping
- D. sdp-mtu

Correct Answer: C

QUESTION 3

Which of the following statements best describes the flooding of traffic on a PE when traffic is received on a SAP?

- A. Traffic is flooded to all SAPs in the service.
- B. Traffic is flooded to all SAPs and spoke SDPs in the service.
- C. Traffic is flooded to all SAPs and mesh SDPs in the service.
- D. Traffic is flooded to all SAPs, spoke SDPs, and mesh SDPs in the service.
- E. The traffic is not flooded.

Correct Answer: D

QUESTION 4

A customer has sites on three different Nokia 7750 SRs. The customer requires a fully-meshed VPLS. Which of the following is TRUE?

- A. Each router requires 1 SDP.
- B. Each router requires 2 SDPs.
- C. Each router requires 3 SDPs.
- D. Each router requires 6 SDPs.

Correct Answer: B

QUESTION 5

Click the exhibit.



```
R1# show router 100 fib 1
```

```
=====
FIB Display
=====
```

Prefix	NextHop	Protocol
10.1.5.0/24	10.1.5.0 (R1-R5)	LOCAL
10.6.4.0/24	10.10.10.4 (VPRN Label:131065 Transport:LDP)	BGP_VPN
10.10.10.5/32	10.1.5.5 Indirect (R1-R5)	BGP
10.10.10.6/32	10.10.10.4 (VPRN Label:131065 Transport:LDP)	BGP_VPN
192.168.10.0/24	10.1.5.5 Indirect (R1-R5)	BGP
192.168.20.0/24	10.10.10.4 (VPRN Label:131065 Transport:LDP)	BGP_VPN

```
-----
Total Entries : 6
```

Based on this output from PE router R1, how many other PEs are participating in the VPRN?

- A. 0
- B. 1
- C. 2
- D. 3

Correct Answer: B

[4A0-104 PDF Dumps](#)

[4A0-104 VCE Dumps](#)

[4A0-104 Braindumps](#)