



# 4A0-106<sup>Q&As</sup>

Alcatel-Lucent Virtual Private Routed Networks

## Pass Alcatel-Lucent 4A0-106 Exam with 100% Guarantee

Free Download Real Questions & Answers **PDF** and **VCE** file from:

<https://www.geekcert.com/4a0-106.html>

100% Passing Guarantee  
100% Money Back Assurance

Following Questions and Answers are all new published by Alcatel-Lucent Official Exam Center

-  **Instant Download** After Purchase
-  **100% Money Back** Guarantee
-  **365 Days** Free Update
-  **800,000+** Satisfied Customers





**QUESTION 1**

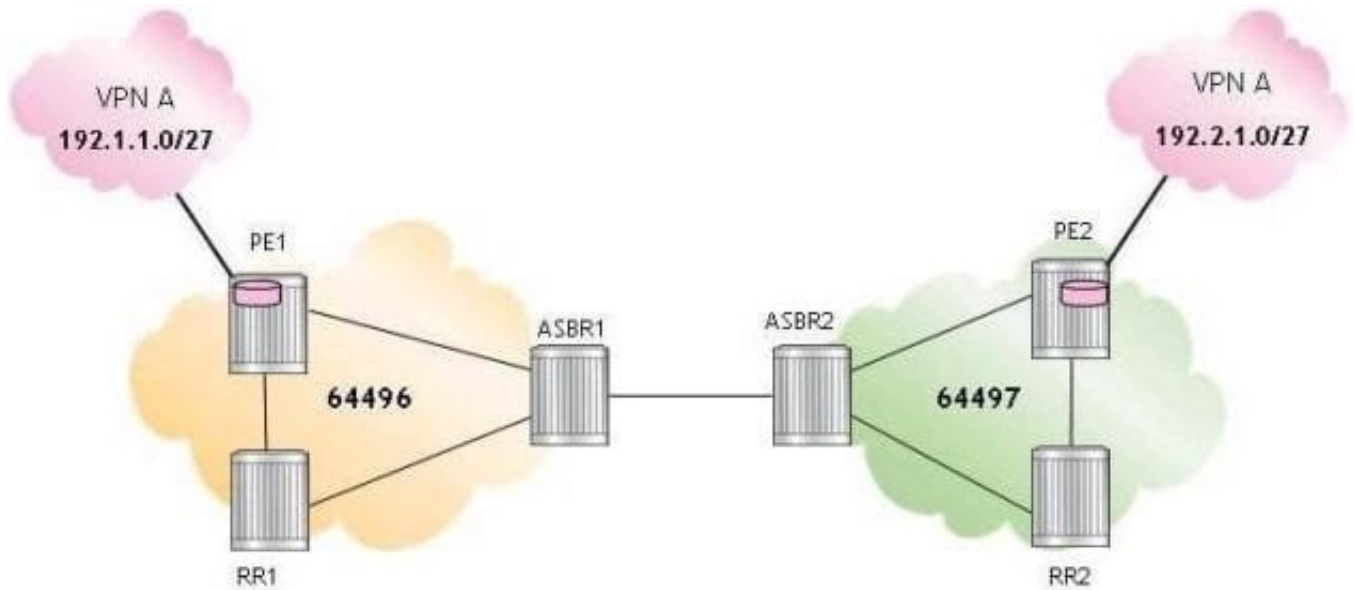
Which of the following about a full mesh VPRN design is FALSE?

- A. Each customer site has a logically direct route to every other customer site.
- B. It provides optimal routing between all sites.
- C. It allows access between all CE devices and all sites participating in the same VRF.
- D. It requires a full BGP mesh in the provider core.

Correct Answer: D

**QUESTION 2**

Click the exhibit.



For the inter-AS model C VPRN, which of the following is FALSE when an IP packet is sent from 192.1.1.1 to 192.2.1.1?

- A. PE1 pushes three labels on the IP packet: a VPN label, a BGP label, and an LDP transport label.
- B. ASBR1 pops the LDP and BGP labels and swaps the VPN label.
- C. ASBR2 pops the BGP label and pushes an LDP transport label.
- D. PE2 pops two labels and forwards the unlabeled packet to its destination.

Correct Answer: B



### QUESTION 3

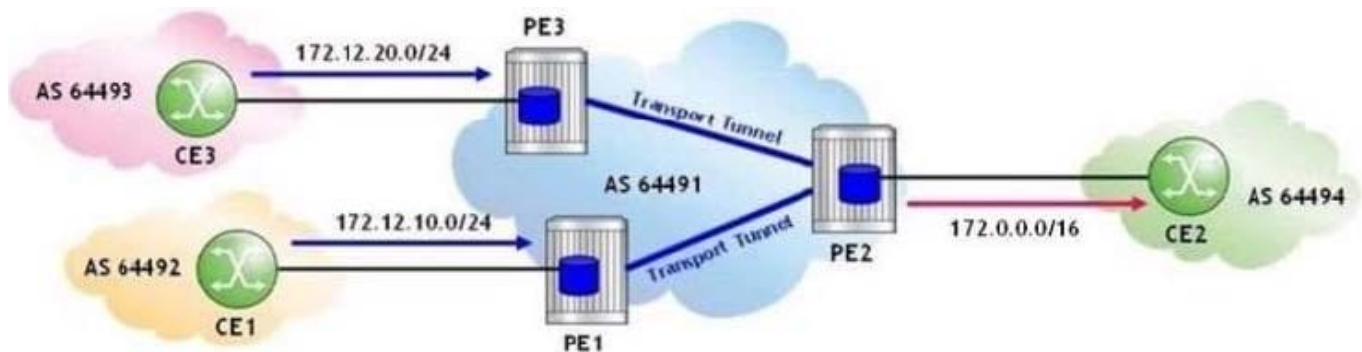
Where are VPN-IPv4 addresses used in a VPRN?

- A. In the routing updates exchanged from CE to PE
- B. In the routing updates exchanged from PE to PE
- C. In the routing updates exchanged from P to PE
- D. In customer packets as they traverse the provider core
- E. In all route tables of the VPRN control plane

Correct Answer: B

### QUESTION 4

Click the exhibit.



```
PE2>config>router>policy-options# info
-----
policy-statement "export-to-CE"
  entry 10
    from
      protocol bgp-vpn
    exit
    action accept
    exit
  exit
  entry 20
    from
      protocol aggregate
    exit
    action accept
    exit
  exit
exit
```

```
PE2>config>service>vprn# bgp group "toCE2" neighbor 10.2.5.5 export "export-to-CE"
```

```
PE2# config>service>vprn# aggregate 172.0.0.0/16 summary-only as-set
```



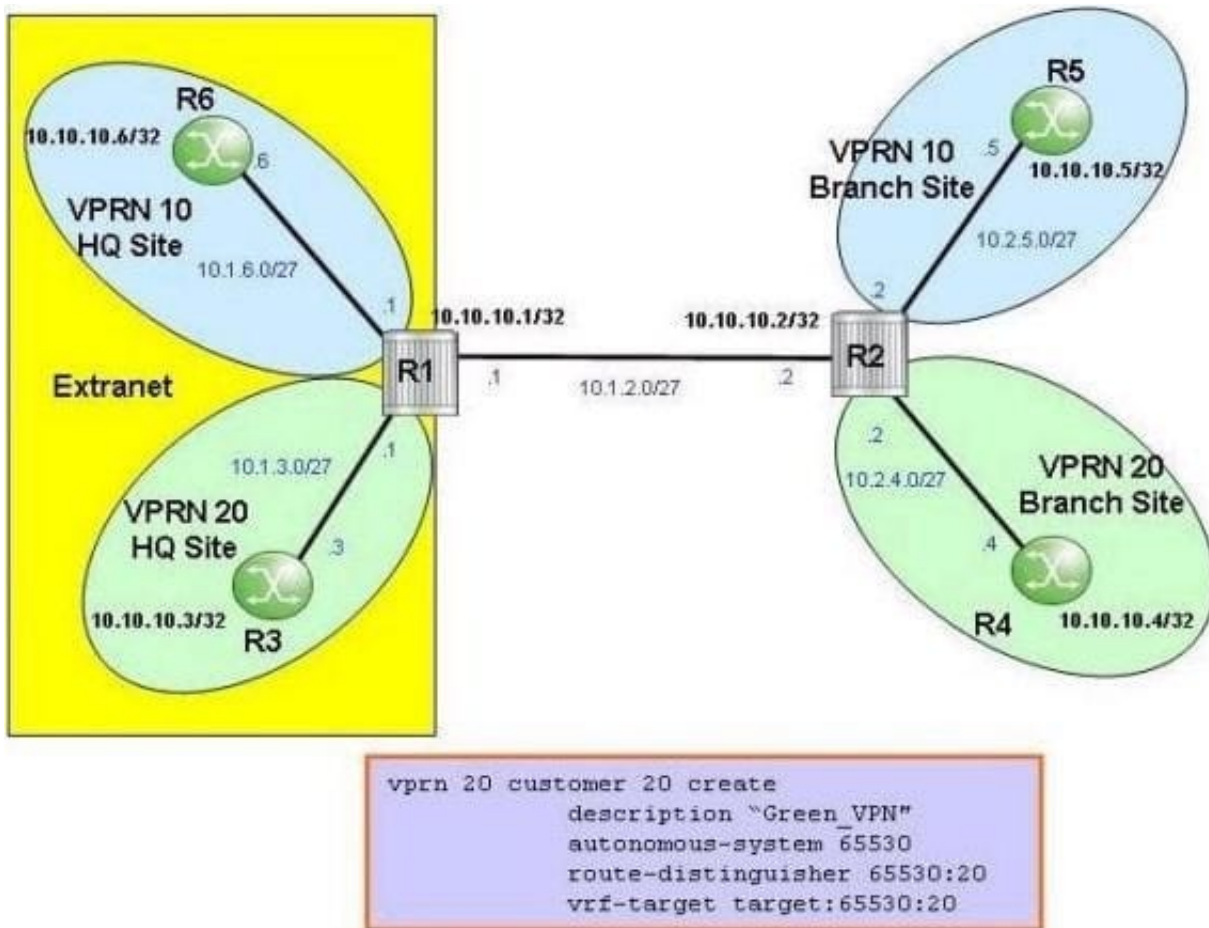
Based on the VPRN aggregate route configuration, which routes are advertised to CE2?

- A. 172.12.10.0/24, 172.12.20.0/24 and 172.0.0.0/16
- B. 172.12.0.0/16 only
- C. 172.12.10.0/24 and 172.12.20.0/24
- D. 172.0.0.0/16 only

Correct Answer: C

**QUESTION 5**

Click the exhibit.



An extranet VPRN is configured on Alcatel-Lucent 7750 SRs. On which router(s) should the displayed configuration be applied?

- A. Router R1
- B. Router R2
- C. Routers R1 and R2



D. Router R3

E. Router R4

Correct Answer: B

[4A0-106 Study Guide](#)

[4A0-106 Exam Questions](#)

[4A0-106 Braindumps](#)