



4A0-106^{Q&As}

Alcatel-Lucent Virtual Private Routed Networks

Pass Alcatel-Lucent 4A0-106 Exam with 100% Guarantee

Free Download Real Questions & Answers **PDF** and **VCE** file from:

<https://www.geekcert.com/4a0-106.html>

100% Passing Guarantee
100% Money Back Assurance

Following Questions and Answers are all new published by Alcatel-Lucent Official Exam Center

-  **Instant Download** After Purchase
-  **100% Money Back** Guarantee
-  **365 Days** Free Update
-  **800,000+** Satisfied Customers





QUESTION 1

Which of the following is not an available option for Route Distinguisher assignment?

- A. One Route Distinguisher per VRF route
- B. One Route Distinguisher per VRF
- C. One Route Distinguisher per VRF per site
- D. One Route Distinguisher per VPN

Correct Answer: A

QUESTION 2

Click the exhibit.

```
*A:ASBR1# show router 10 bgp summary
=====
BGP Router ID:10.10.10.3      AS:64496      Local AS:64496
=====
BGP Admin State      : Up          BGP Oper State      : Up
Total Peer Groups    : 1           Total Peers          : 1
Total BGP Paths       : 5           Total Path Memory    : 660
Total IPv4 Remote Rts : 3           Total IPv4 Rem. Active Rts : 3
Total IPv6 Remote Rts : 0           Total IPv6 Rem. Active Rts : 0
Total Suppressed Rts : 0           Total Hist. Rts      : 0
Total Decay Rts      : 0
=====
BGP Summary
=====
Neighbor
      AS PktRcvd InQ  Up/Down  State|Rcv/Act/Sent (Addr Family)
      PktSent OutQ
-----
10.3.4.4
      ----  106   0 00h50m09s 3/3/3 (IPv4)
      104   0
=====
```

The displayed output is from an ASBR supporting an inter-AS model A VPRN. Which of the following statements about this output is TRUE?

- A. The neighbor shown is an ASBR router.
- B. The address family between the peers should be VPN-IPv4 instead of IPv4.
- C. The neighbor address cannot be the interface address 10.3.4.4.
- D. The omitted AS number under "BGP summary" must be equal to 64496.



Correct Answer: A

QUESTION 3

What operation does a P device perform when it receives a labeled packet for a VPRN service?

- A. It forwards the packet based on the label signaled by MP-BGP.
- B. It decrements the TTL and forwards the packet based on the inner label.
- C. It swaps the outer label then forwards the packet.
- D. The P router does not perform any operations on labeled packets.

Correct Answer: C

QUESTION 4

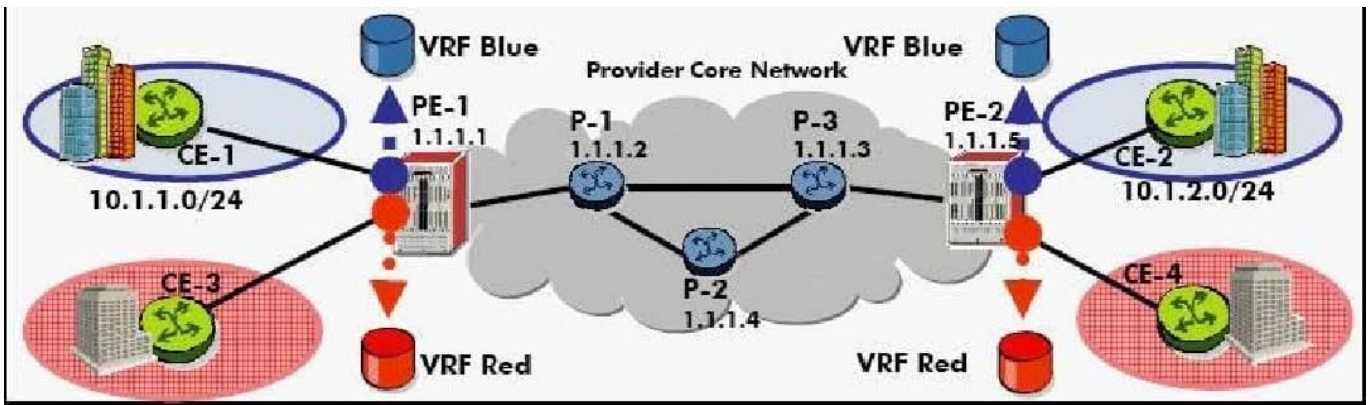
Which of the following about inter-AS model A VPRN is FALSE?

- A. It requires the configuration of back-to-back VRFs between ASBR routers in different autonomous systems
- B. It is the most scalable of the Inter-AS models.
- C. Most routers that support VPRN functionality support model A by default.
- D. It uses conventional eBGP to distribute unlabeled IPv4 routes between ASBR routers in different autonomous systems.

Correct Answer: B

QUESTION 5

When configuring the CE with the selected CE-PE routing protocol on an Alcatel-Lucent 7750 SR, which of the following statements is true? (Choose three.)



```
PE-1>config>service# VPRN 20 customer 101 create
PE-1>config>service>VPRN$ description "VPRN Service"
PE-1>config>service>VPRN$ route-distinguisher 65100:101
PE-1>config>service>VPRN$ vrf-target target:65100:101
PE-1>config>service>VPRN$ auto-bind ldp
PE-1>config>service>VPRN$ router-id 1.1.1.1
PE-1>config>service>VPRN$ exit
PE-1>config>service#
```

- A. The protocol is configured under the config>service context
- B. The protocol is configured under the global router context
- C. The interface leading to the PE is defined as a protocol neighbor
- D. The routing protocol used must be the same as the routing protocol used at other CE-PE locations in the same VPN.
- E. A routing policy may or may not be required depending on the routing requirements and routing protocol

Correct Answer: BCE

[Latest 4A0-106 Dumps](#)

[4A0-106 Study Guide](#)

[4A0-106 Exam Questions](#)