



4A0-106^{Q&As}

Alcatel-Lucent Virtual Private Routed Networks

Pass Alcatel-Lucent 4A0-106 Exam with 100% Guarantee

Free Download Real Questions & Answers **PDF** and **VCE** file from:

<https://www.geekcert.com/4a0-106.html>

100% Passing Guarantee
100% Money Back Assurance

Following Questions and Answers are all new published by Alcatel-Lucent Official Exam Center

-  **Instant Download** After Purchase
-  **100% Money Back** Guarantee
-  **365 Days** Free Update
-  **800,000+** Satisfied Customers





QUESTION 1

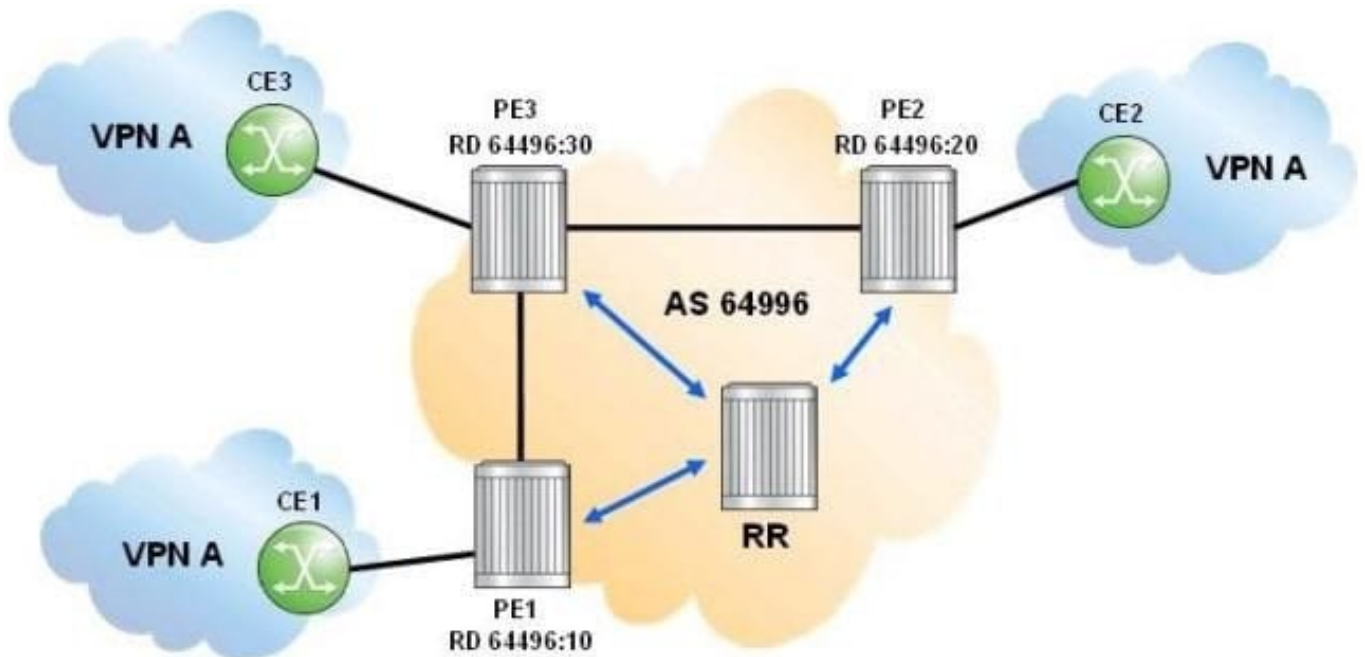
Based on the VPRN BGP decision process, which of the following routes is selected first?

- A. The route with the lowest MED.
- B. The route with the shortest AS Path.
- C. The route received from the lowest peer IP address.
- D. The route with the lowest Origin.

Correct Answer: B

QUESTION 2

Click the exhibit.



One Route Distinguisher is assigned per VRF. If CE1 and CE2 advertise prefix 10.1.1.0/24, which of the following statements is FALSE?

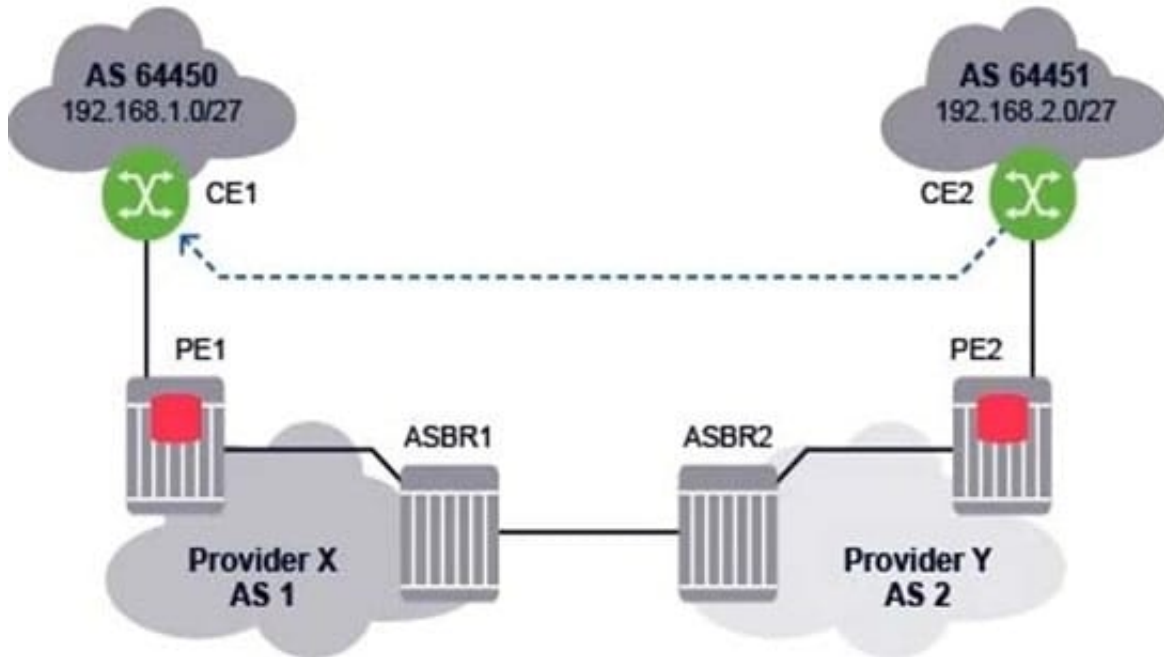
- A. PE1 and PE2 advertise the same VPN route to the route reflector.
- B. The route reflector receives two routes for prefix 10.1.1.0/24; one from PE1 and one from PE2.
- C. The route reflector reflects two routes for prefix 10.1.1.0/24.
- D. PE3 receives two routes and is able to load balance traffic across PE1 and PE2.

Correct Answer: A



QUESTION 3

For the Inter-AS model VPRN, which of the following is FALSE when CE2 sends an IP packet to 192.168.1.1?

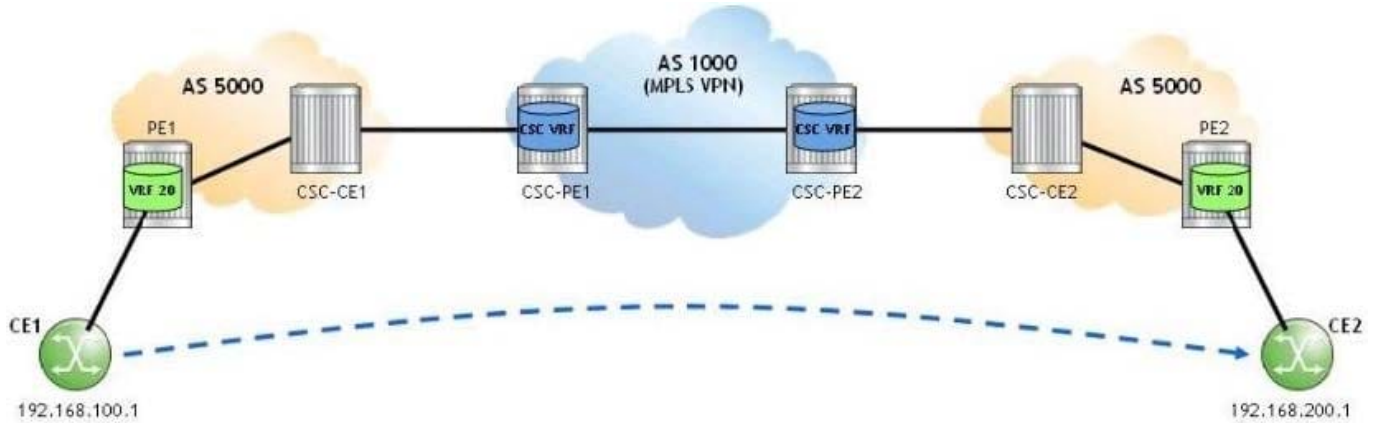


- A. PE2 pushes two labels on the IP packet and forwards it to ASBR2.
- B. ASBR2 forwards the IP packet with one label to ASBR1.
- C. ASBR1 label-switches the packet and forwards it with one label to PE1.
- D. PE1 forwards an unlabeled IP packet to CE1.

Correct Answer: C

QUESTION 4

Click the exhibit.



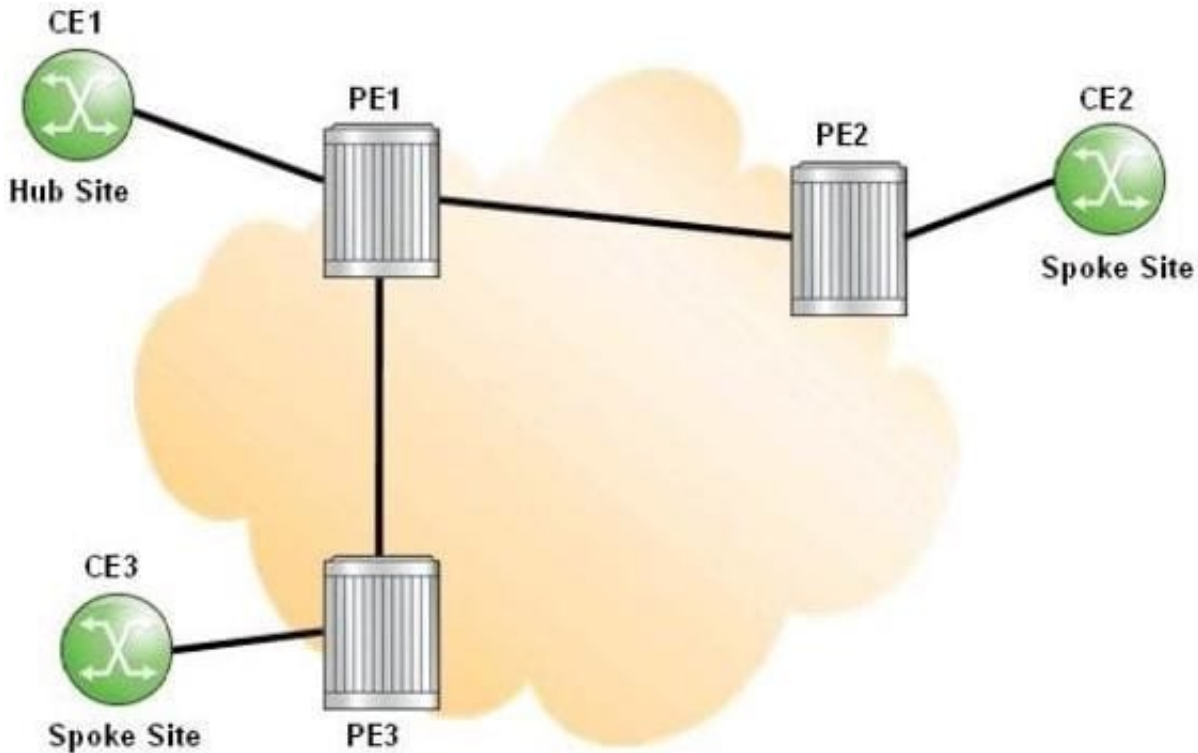
A Carrier Supporting Carrier (CSC) VPRN is configured for a customer carrier who is a BGP/MPLS service provider. If CE1 sends an IP packet to 192.168.200.1, which of the following is FALSE?

- A. PE1 pushes a VPN label, a BGP label, and an LDP transport label on the IP packet.
- B. CSC-CE1 pops the LDP label and swaps the BGP label.
- C. CSC-PE1 pops the BGP label, swaps the VPN label, and pushes an LDP transport label.
- D. CSC-PE2 pops the LDP and VPN labels and pushes a BGP label.

Correct Answer: C

QUESTION 5

Click the exhibit.



For the CE hub and spoke VPRN, which of the following is FALSE?

- A. The primary VRF on PE1 contains routes learned from spoke sites.
- B. All traffic between spoke sites must pass through CE1.
- C. The secondary VRF on PE1 is used to route data packets from the hub CE to the spoke sites.
- D. PE1 advertises the primary VRF routes to CE1.

Correct Answer: C

[Latest 4A0-106 Dumps](#)

[4A0-106 Practice Test](#)

[4A0-106 Study Guide](#)