



# 4A0-C01<sup>Q&As</sup>

Nokia NRS II Composite Exam

**Pass Nokia 4A0-C01 Exam with 100% Guarantee**

Free Download Real Questions & Answers **PDF** and **VCE** file from:

<https://www.geekcert.com/4a0-c01.html>

100% Passing Guarantee  
100% Money Back Assurance

Following Questions and Answers are all new published by Nokia  
Official Exam Center

-  **Instant Download** After Purchase
-  **100% Money Back** Guarantee
-  **365 Days** Free Update
-  **800,000+** Satisfied Customers





### QUESTION 1

Which service is needed to bridge an ATM service to an Ethernet service?

- A. Apipe
- B. Fpipe
- C. Cpipe
- D. Epipe
- E. Bridge service

Correct Answer: D

---

### QUESTION 2

Which of the following TLV fields is included in an IS-IS Hello packet on broadcast interfaces but not on point-to-point interfaces?

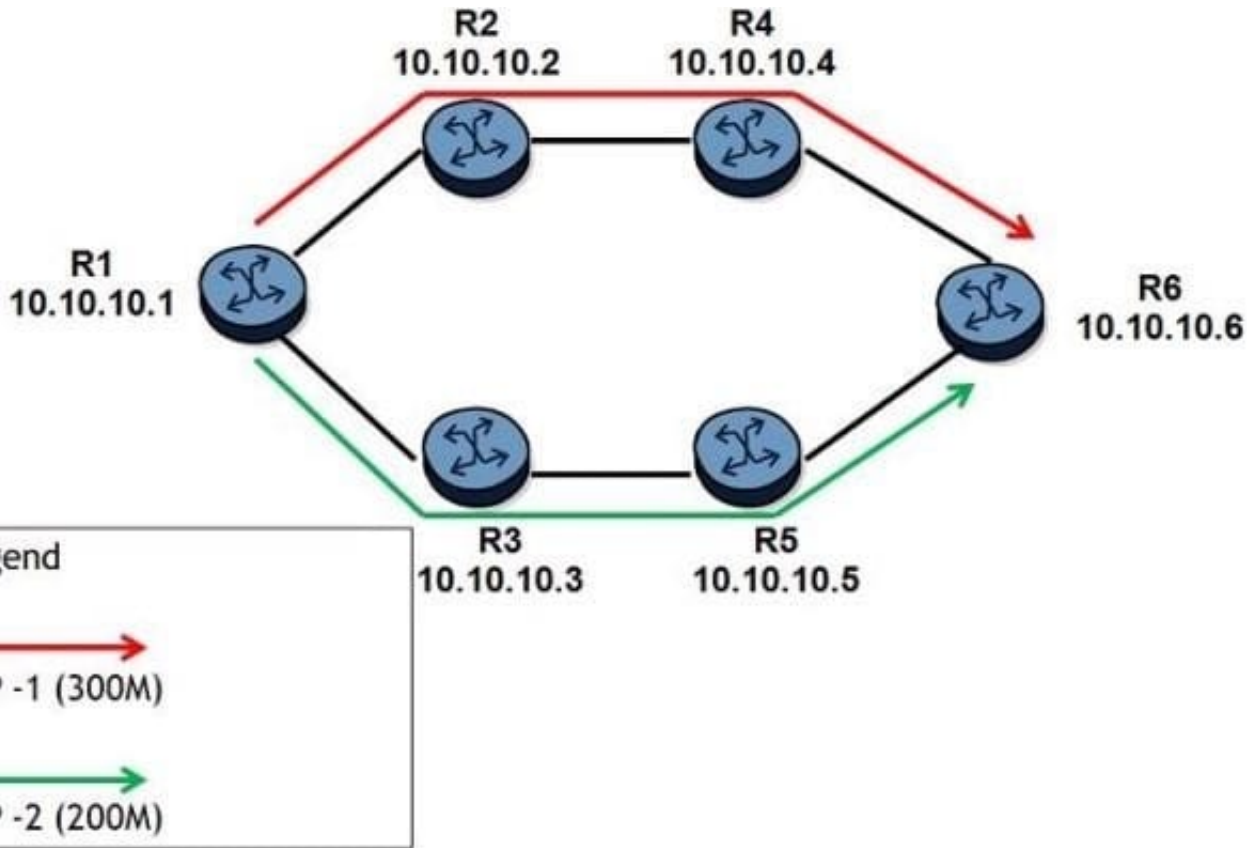
- A. The area addresses TLV
- B. The intermediate system neighbors TLV
- C. The IP interface address TLV
- D. The authentication information TLV

Correct Answer: B

---

### QUESTION 3

Click on the exhibit.



All links have 1 Gbps unreserved bandwidth initially and all LSPs have the least-fill feature enabled. After the two LSPs have been signaled as shown, two additional LSPs are configured.

LSP-3 is signaled first with 50Mbps reserved. LSP-4 is signaled after with 400Mbps reserved.

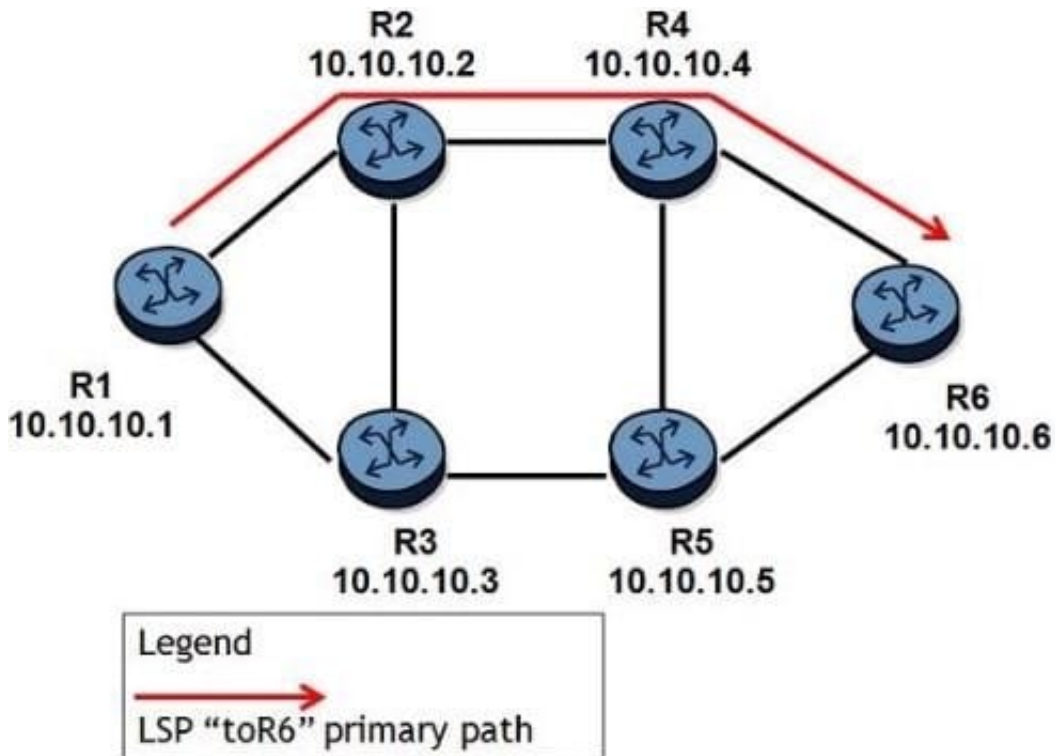
Which paths will CSPF choose for LSP-3 and LSP-4?

- A. Both LSP-3 and LSP-4 take R1-R2-R4-R6.
- B. Both LSP-3 and LSP-4 take R1-R3-R5-R6.
- C. LSP-3 takes R1-R3-R5-R6 and LSP-4 takes R1-R2-R4-R6.
- D. LSP-3 takes R1-R2-R4-R6 and LSP-4 takes R1-R3-R5-R6.
- E. CSPF randomly chooses one of the equal cost paths for the two LSPs.

Correct Answer: B

#### QUESTION 4

Click on the exhibit.



Which of the following CANNOT be used to ensure the LSP toR6" will follow the path R1- R2-R4-R6?

- A. Admin groups
- B. Hop-limit
- C. Strict hops
- D. TE-Metric

Correct Answer: B

#### QUESTION 5

Which OAM command can be used to verify the correct and consistent provisioning of a service between two service end points?

- A. sdp-ping
- B. lsp-ping
- C. sap-ping
- D. svc-ping

Correct Answer: D