



# 4A0-C04<sup>Q&As</sup>

Nokia NRS II Composite Exam: OSPF version

## Pass Nokia 4A0-C04 Exam with 100% Guarantee

Free Download Real Questions & Answers **PDF** and **VCE** file from:

<https://www.geekcert.com/4a0-c04.html>

100% Passing Guarantee  
100% Money Back Assurance

Following Questions and Answers are all new published by Nokia  
Official Exam Center

- ⚙️ **Instant Download** After Purchase
- ⚙️ **100% Money Back** Guarantee
- ⚙️ **365 Days** Free Update
- ⚙️ **800,000+** Satisfied Customers





#### QUESTION 1

Which utility on the Nokia 7750 SR can be used to investigate an MPLS path?

- A. lsp-trace
- B. ldp-trace
- C. sdp-ping
- D. svc-ping
- E. Ping

Correct Answer: A

---

#### QUESTION 2

Which of the following best describes the type of packets used by OSPF routers to exchange updates on a point-to-point link?

- A. IP packets sent to an IP multicast address.
- B. TCP packets sent to an IP multicast address.
- C. IP packets sent to an IP unicast address.
- D. UDP packets sent to an IP multicast address.

Correct Answer: A

---

#### QUESTION 3

Which of the following regarding MPLS encapsulation for VPRN services is TRUE?

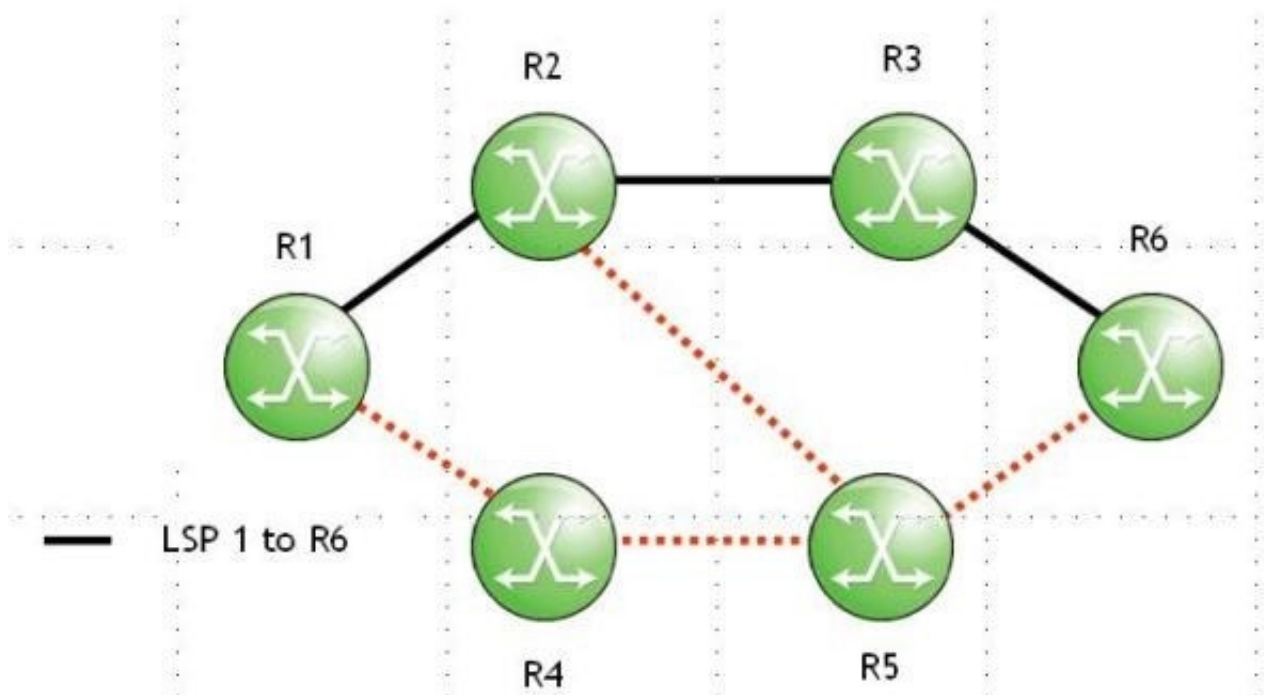
- A. The customer's Layer 3 header is removed at the iLER.
- B. The customer's Layer 2 header is removed at the iLER.
- C. The customer's Layer 3 header is removed at the eLER.
- D. The customer's Layer 2 header is removed at the eLER.

Correct Answer: A

---

#### QUESTION 4

Click on the exhibit.



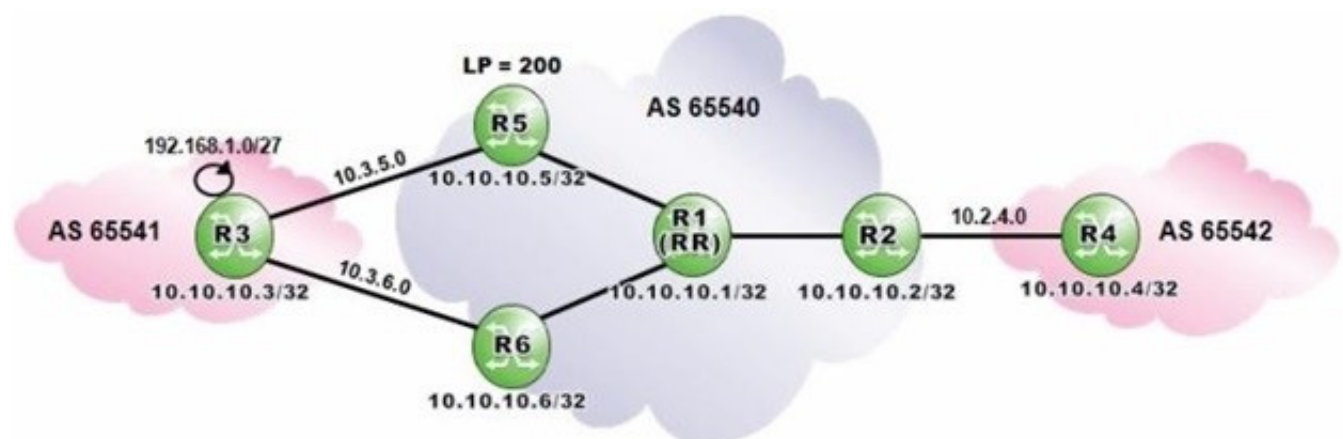
LSP 1's link between routers R3 and R6 has failed, and the RESV state at router R3 has timed out. Which of the following actions will router R3 initiate?

- A. Send a PathTear message towards router R6.
- B. Send a PathTear message towards router R1.
- C. Send a ResvTear message toward router R6.
- D. Send a ResvTear message toward router R1.

Correct Answer: D

## QUESTION 5

Click the exhibit.





Router R1 is a route reflector with clients R2, R5 and R6. Prefixes advertised by router R5 have a local preference of 200. Router R3 advertises the prefix 192.168.1.0/27 to routers R5 and R6.

Assuming that none of the routers in AS 65540 is configured with "advertise-external", what is the expected output of "show router bgp routes on router R1?

- A. Option A
- B. Option B
- C. Option C
- D. Option D

Correct Answer: C

[4A0-C04 PDF Dumps](#)

[4A0-C04 VCE Dumps](#)

[4A0-C04 Study Guide](#)