



4A0-C04^{Q&As}

Nokia NRS II Composite Exam: OSPF version

Pass Nokia 4A0-C04 Exam with 100% Guarantee

Free Download Real Questions & Answers **PDF** and **VCE** file from:

<https://www.geekcert.com/4a0-c04.html>

100% Passing Guarantee
100% Money Back Assurance

Following Questions and Answers are all new published by Nokia
Official Exam Center

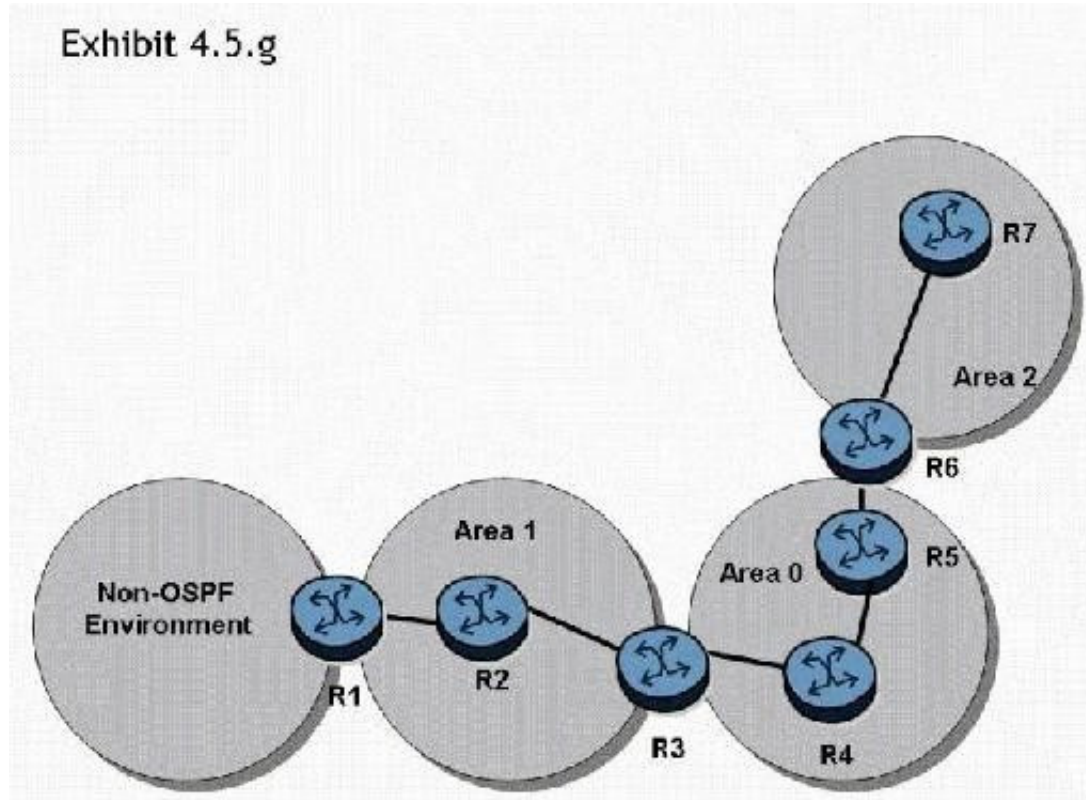
- ⚙️ **Instant Download** After Purchase
- ⚙️ **100% Money Back** Guarantee
- ⚙️ **365 Days** Free Update
- ⚙️ **800,000+** Satisfied Customers





QUESTION 1

Click the exhibit button.



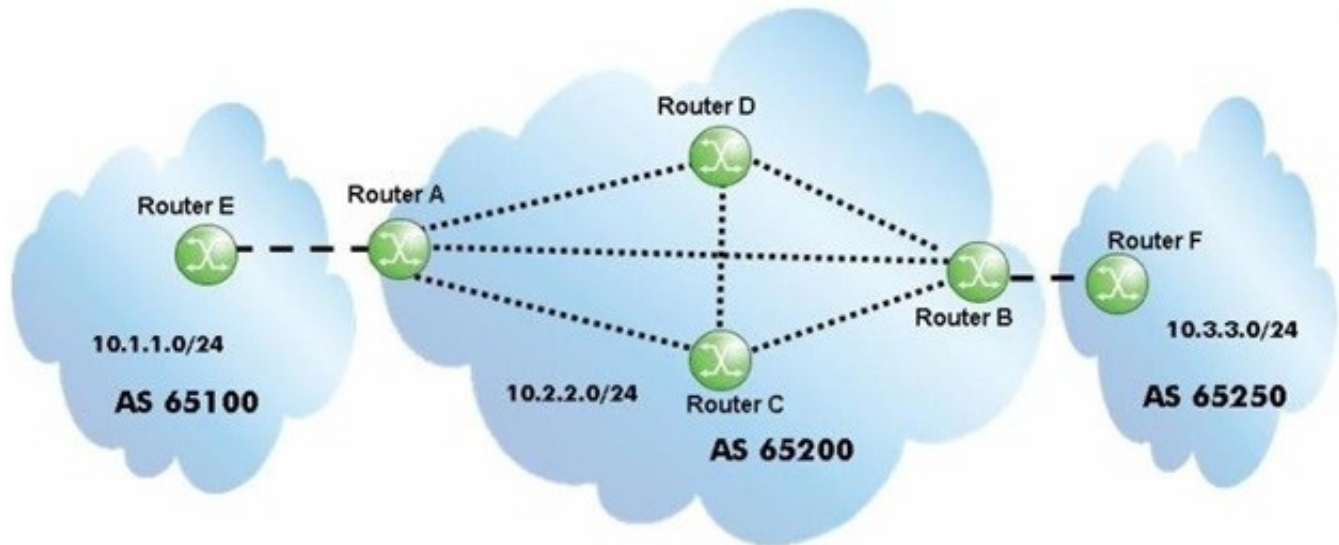
In the topology shown, router R1 is an ASBR configured to export external routes to OSPF. Assuming that there are no stub networks, which of the following statements regarding type 4 LSA generation is true?

- A. Router R1 generates a type 4 LSA that is flooded to areas 0, 1, and 2.
- B. Router R3 generates a type 4 LSA that is flooded to areas 0, 1, and 2.
- C. Router R3 generates a type 4 LSA that is flooded to areas 0 and 2.
- D. Router R3 generates a type 4 LSA that is flooded to area 0, and router R6 generates a type 4 LSA that is flooded to area 2.

Correct Answer: D

QUESTION 2

Click the exhibit.



After router A receives the BGP update for the 10.3.3.0/24 prefix, which routers will the route be propagated to?

- A. All routers with which it has a BGP session.
- B. All routers with which it has a BGP session, except the router it received the update from, which is router B.
- C. All routers with which it has a BGP session, except the router it received the update from, which is router C.
- D. All routers with which it has a BGP session, except the router it received the update from, which is router D.
- E. Only eBGP neighbors.

Correct Answer: E

QUESTION 3

Consider a device that uses per-platform label space; which of the following fields is NOT contained in the LFIB?

- A. Incoming label
- B. Outgoing label
- C. Incoming interface
- D. Outgoing interface

Correct Answer: C

QUESTION 4

A router in AS 65100 receives two BGP routes. The first route is for 138.1.1.0/24 with an AS Path of 65200 65300, Local Preference of 100, MED of 100, and router ID 10.10.10.10. The second route is for 138.1.0.0/16 with an AS Path of 65500 65300, Local Preference of 150, MED of 100, and router ID 10.1.1.1. Assuming all other attributes are equal, which route would be used to forward an IP packet with destination IP address 138.1.1.1?



- A. The first BGP route.
- B. The second BGP route.
- C. Both routes are used.
- D. It is impossible to determine without the value of the origin code for both routes.

Correct Answer: A

QUESTION 5

Which of the following is a characteristic of LDP Hello messages?

- A. They are multicast to the All Hosts address.
- B. They are broadcast to the subnet broadcast address.
- C. They are multicast to the All Routers address.
- D. They are broadcast or multicast, depending on the physical media.

Correct Answer: C

[Latest 4A0-C04 Dumps](#)

[4A0-C04 VCE Dumps](#)

[4A0-C04 Study Guide](#)