



# 500-220<sup>Q&As</sup>

Cisco Meraki Solutions Specialist

## Pass Cisco 500-220 Exam with 100% Guarantee

Free Download Real Questions & Answers **PDF** and **VCE** file from:

<https://www.geekcert.com/500-220.html>

100% Passing Guarantee  
100% Money Back Assurance

Following Questions and Answers are all new published by Cisco  
Official Exam Center

- ⚙️ **Instant Download** After Purchase
- ⚙️ **100% Money Back** Guarantee
- ⚙️ **365 Days** Free Update
- ⚙️ **800,000+** Satisfied Customers





### QUESTION 1

A new application needs to be pushed to all iOS devices. Some devices report "NotNow" in the event log and do not install the application. What does the "NotNow" event indicate?

- A. The application requires the most recent iOS version.
- B. The device is locked with a passcode.
- C. The device cannot connect to Apple servers.
- D. The device cannot connect to Cisco Meraki servers.

Correct Answer: B

Reference: <https://community.meraki.com/t5/Mobile-Device-Management/Check-NotNow-Status/td-p/3887>

---

### QUESTION 2

When an SSID is configured with Sign-On Splash page enabled, which two settings must be configured for unauthenticated clients to have full network access and not be allow listed? (Choose two.)

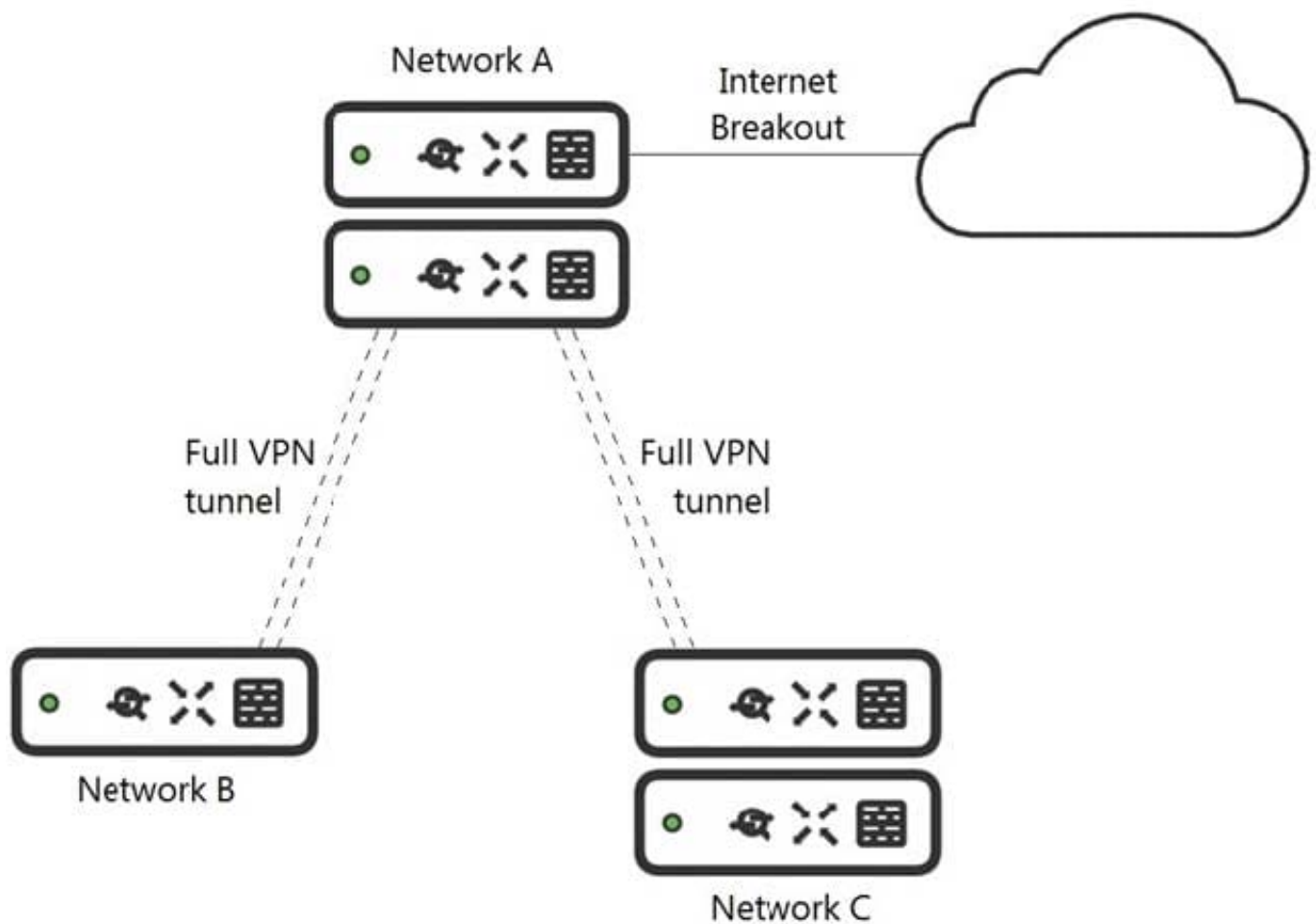
- A. Controller disconnection behavior
- B. Captive Portal strength
- C. Simultaneous logins
- D. Firewall and traffic shaping
- E. RADIUS for splash page settings

Correct Answer: AB

Reference: [https://documentation.meraki.com/MR/Access\\_Control](https://documentation.meraki.com/MR/Access_Control)

---

### QUESTION 3



Refer to the exhibit. What is the minimal Cisco Meraki Insight licensing requirement?

- A. A single Meraki Insight license must be configured on network A to gain Web App Health visibility on network B.
- B. A single Meraki Insight license must be configured on network B to gain Web App Health visibility on network B.
- C. A single Meraki Insight license must be configured on network A, and a single license must be configured on network B, to gain Web App Health visibility on network B.
- D. Two Meraki Insight licenses must be configured on network A to gain Web App Health visibility on network B.
- E. Two Meraki Insight licenses must be configured on network A and a single license must be configured on network B, to gain Web App Health visibility on network B.

Correct Answer: E

#### QUESTION 4

Company iPads are enrolled in Systems Manager without supervision, and profiles are pushed through Systems Manager.

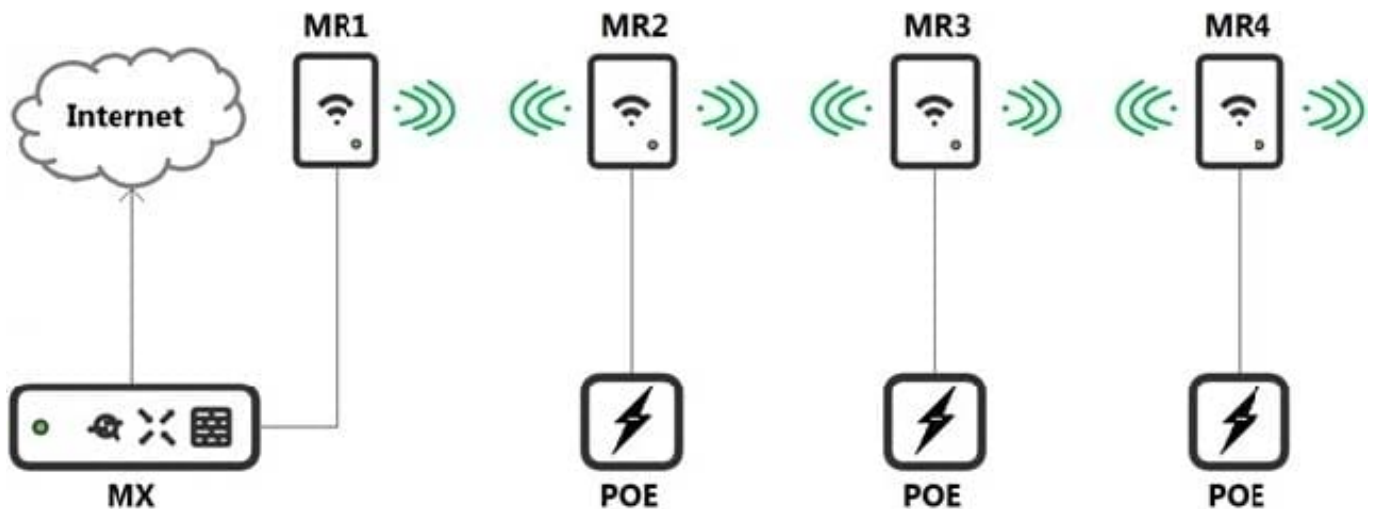
Which outcome occurs when a user attempts to remove the "Meraki Management" profile on an iPad?



- A. The "Meraki Management" profile cannot be removed.
- B. The "Meraki Management" profile is removed and then pushed automatically by Systems Manager.
- C. The "Meraki Management" profile is removed. All the profiles that Systems Manager pushed are also removed.
- D. The "Meraki Management" profile is removed. All the profiles Systems Manager pushed remain.

Correct Answer: C

#### QUESTION 5



Refer to the exhibit. Which design recommendation should be considered?

- A. A 25-percent throughput loss occurs for every hop. Cisco Meraki best practice recommends a 1-hop maximum.
- B. A 25-percent throughput loss occurs for every hop. Cisco Meraki best practice recommends a 2-hop maximum.
- C. A 50-percent throughput loss occurs for every hop. Cisco Meraki best practice recommends a 1-hop maximum.
- D. A 50-percent throughput loss occurs for every hop. Cisco Meraki best practice recommends a 2-hop maximum.

Correct Answer: C

[500-220 PDF Dumps](#)

[500-220 Practice Test](#)

[500-220 Exam Questions](#)