



5V0-41.20^{Q&As}

VMware SD-WAN Troubleshoot

Pass VMware 5V0-41.20 Exam with 100% Guarantee

Free Download Real Questions & Answers **PDF** and **VCE** file from:

<https://www.geekcert.com/5v0-41-20.html>

100% Passing Guarantee
100% Money Back Assurance

Following Questions and Answers are all new published by VMware
Official Exam Center

-  **Instant Download** After Purchase
-  **100% Money Back** Guarantee
-  **365 Days** Free Update
-  **800,000+** Satisfied Customers



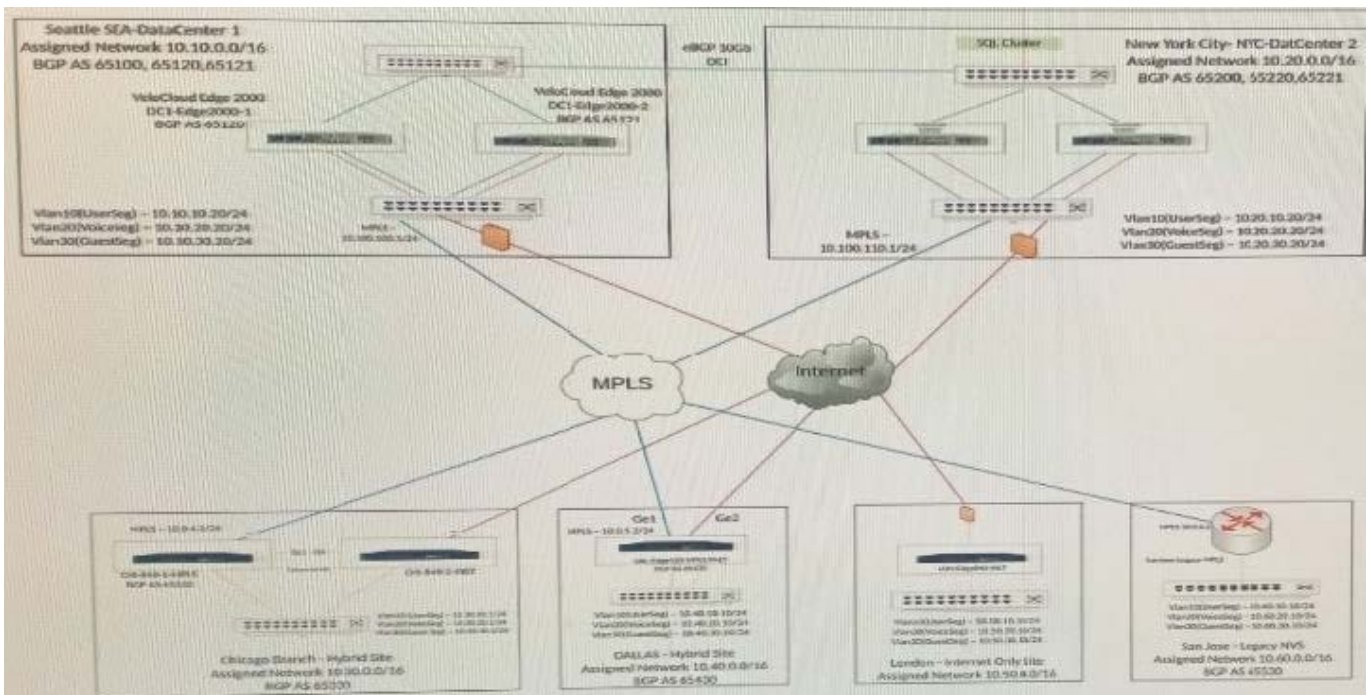


QUESTION 1

Scenario 2:

After resolving numerous connectivity Issues throughout the various branch sites, connectivity between applications and users is finally present. The network administrator is informed that during certain tests, applications are not performing as they are expected to. Users report that call quality has not fully improved and that some of their calls either drop or have poor voice quality where the conversation is breaking up. Other users are noticing that file transfers are slower than expect. A group of users from a few sites have reported slowness in accessing internal and external applications.

Exhibit.



A network administrator has configured a Business Policy to send a specific application directly out an underlay interface. Users have complained of slow responses for that application. While troubleshooting, the network administrator finds the traffic is actually taking an overlay path to another SD-WAN Edge.

What is causing this behavior?

- A. The other Edge location is advertising a secure route for the application's subnet.
- B. ul has been configured forcing traffic into the underlay towards the hub.
- C. Configuring Business Policy Direct settings have no affect on traffic flows.
- D. Internet Backha.
- E. The underlay path is not available forcing traffic into the overlay.

Correct Answer: E

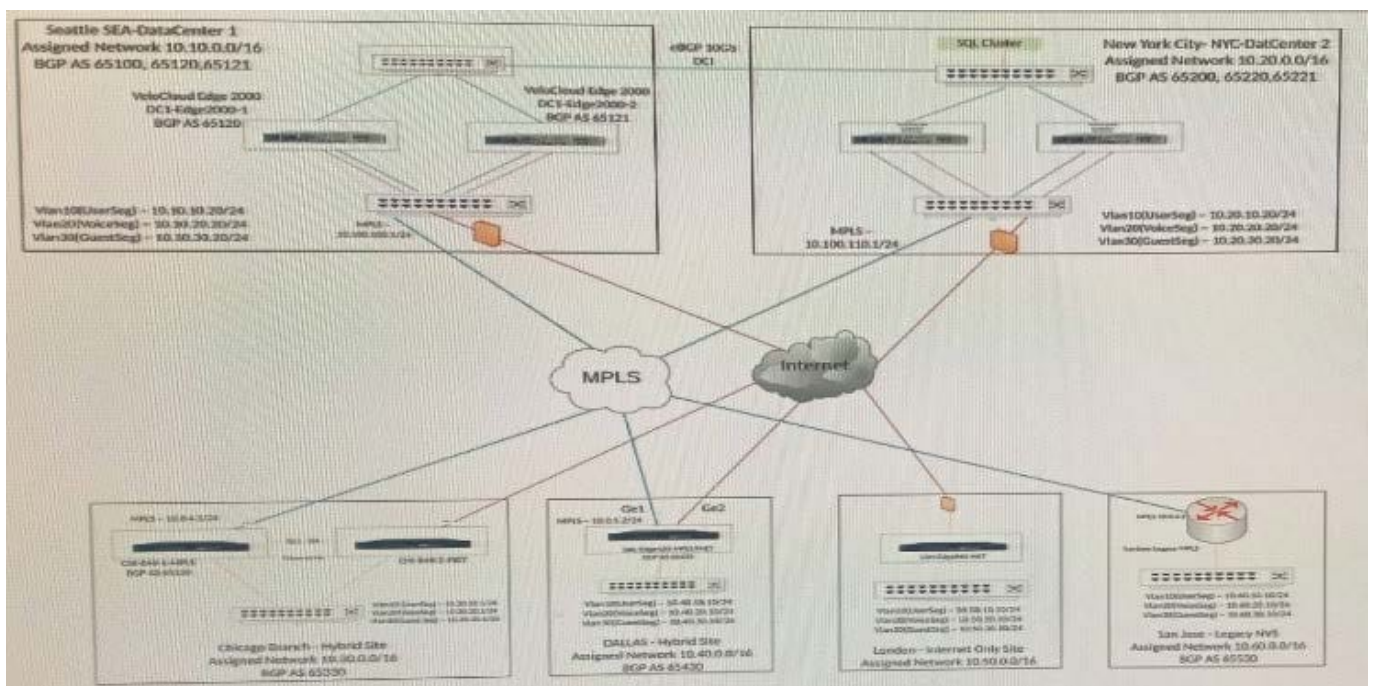


QUESTION 2

Scenario 2:

After completing the branch activation activities for all required branches, the network administrator attempts to test connectivity between the various branches and between the hubs and branches. The administrator notices a lack of connectivity despite being certain that configurations have been complete. The administrator also observed that several users are reporting intermittent connectivity to some of the applications they are accessing. Other users are reporting no access to these applications. Other users at some of the branches claim they cannot get to certain public resources. The administrator wants to ensure that all sites can talk to each other and all resources are accessible.

Exhibit.



Several reports have come in from branch locations indicating customers cannot reach applications being served by the hub location. The hub location has a single LAN-side port from which it should be learning dynamic routes for the subnets serving the applications.

How should the technician verify if the ports on the Edge are up and working?

- A. Look under Administration and System Settings to verify if the interfaces are configured and enabled.
- B. Look in Test and Troubleshoot under the Remote Diagnostics and run Interface status.
- C. Look in Test and Troubleshoot under the Remote Actions and run System Health.
- D. Look in Test and Troubleshoot under the Remote Diagnostics and run System Health.

Correct Answer: B

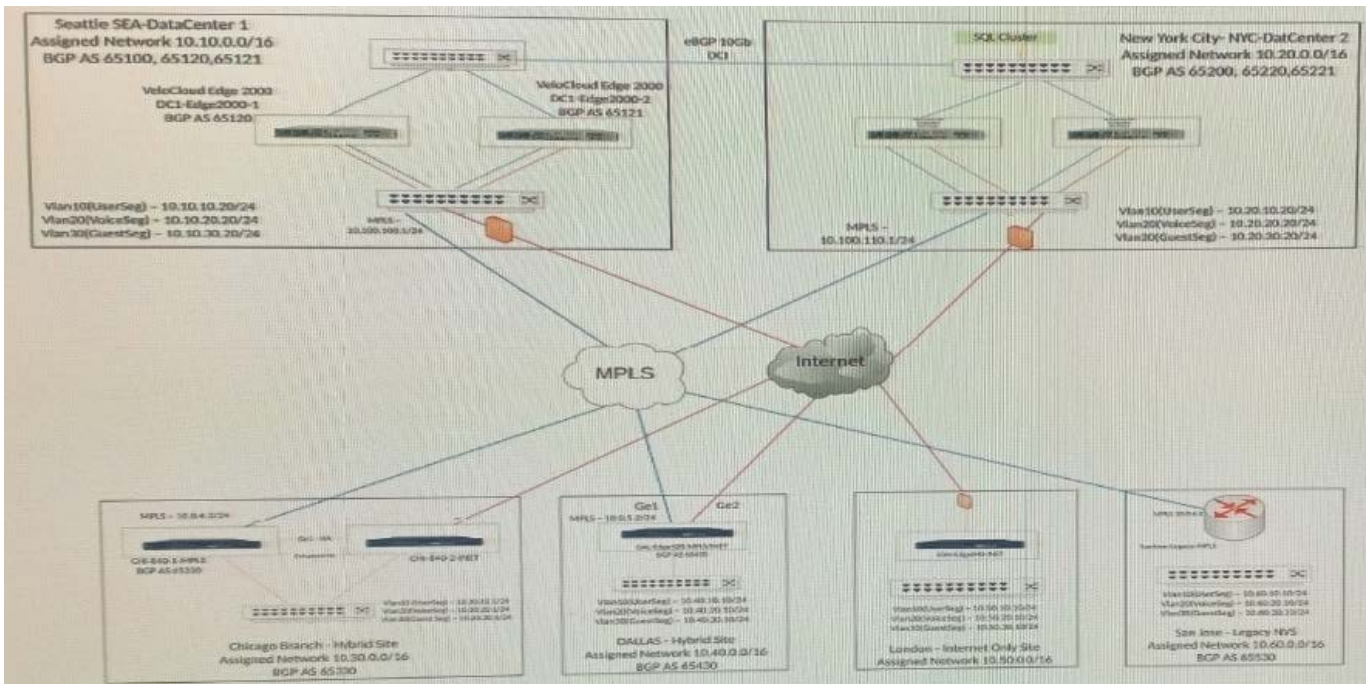


QUESTION 3

Scenario 3:

After resolving numerous connectivity issues throughout the various branch sites, connectivity between applications and users is finally present. The network administrator is informed that during certain tests, applications are not performing as they are expected to. Users report that call quality has not fully improved and that some of their calls either drop or have poor voice quality where the conversation is breaking up. Other users are noticing that file transfers are slower than expect. A group of users from a few sites have reported slowness in accessing internal and external applications.

Exhibit.



A network engineer is configuring an Internet Backhaul Policy for the Chicago Branch to utilize NY's hub as a much better source for Internet for certain SaaS applications. For an unknown reason, the network engineer is not able to select the hubs in the Internet Backhaul Policy.

What could be the reason?

- A. The Dynamic Branch to Branch has not been enabled.
- B. The hub is not configured with the proper IP address.
- C. Dynamic Branch to Branch using gateways has not been enabled.
- D. The Edge's profile does not include Backhaul hubs as an option.

Correct Answer: C

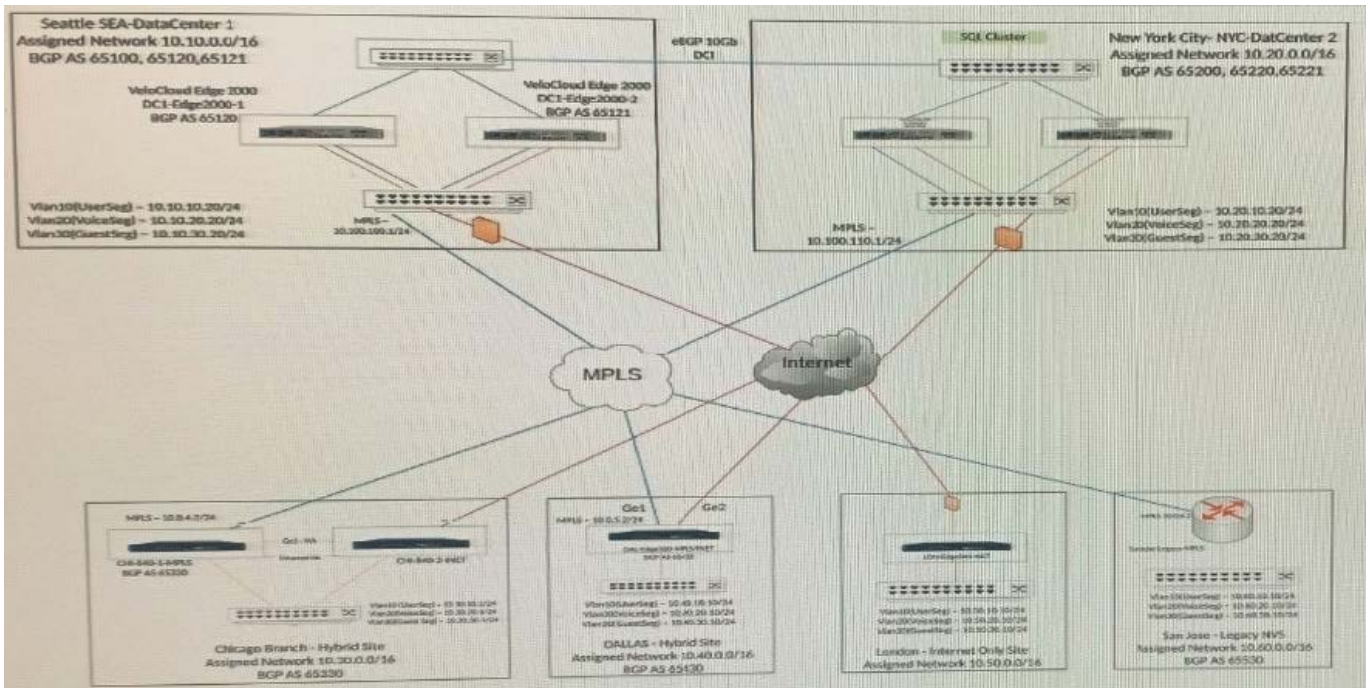
QUESTION 4

Scenario 2:



After completing the branch activation activities for all required branches, the network administrator attempts to test connectivity between the various branches and between the hubs and branches. The administrator notices a lack of connectivity despite being certain that configurations have been complete. The administrator also observed that several users are reporting intermittent connectivity to some of the applications they are accessing. Other users are reporting no access to these applications. Other users at some of the branches claim they cannot get to certain public resources. The administrator wants to ensure that all sites can talk to each other and all resources are accessible.

Exhibit.



One branch location is not able to communicate with another branch location via dynamic branch-to-branch tunnels. While troubleshooting at the Edge configuration level, the network administrator notices Cloud VPN is not enabled and is grayed out, preventing them from enabling that feature.

- A. Where is the next location to check for and enable the necessary feature?
- B. Within the Configuration section under Profiles. Within the Monitor section under Network Services.
- C. Within the Test and Troubleshooting section under Remote Diagnostics.
- D. Within the Configuration section under Customer VPN enablement.

Correct Answer: D

QUESTION 5

Scenario 3: After resolving numerous connectivity issues throughout the various branch sites, connectivity between applications and users is finally present. The network administrator is informed that during certain tests, applications are not performing as they are expected to. Users report that call quality has not fully improved and that some of their calls either drop or have poor voice quality where the conversation is breaking up. Other users are noticing that file transfers are slower than expect. A group of users from a few sites have reported slowness in accessing internal and external



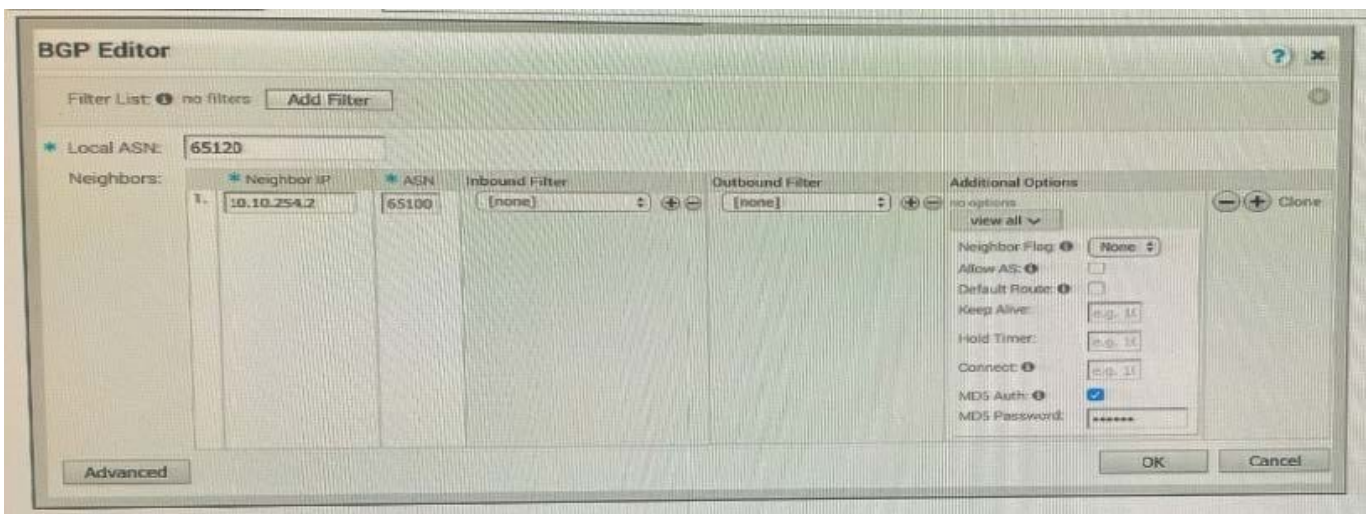
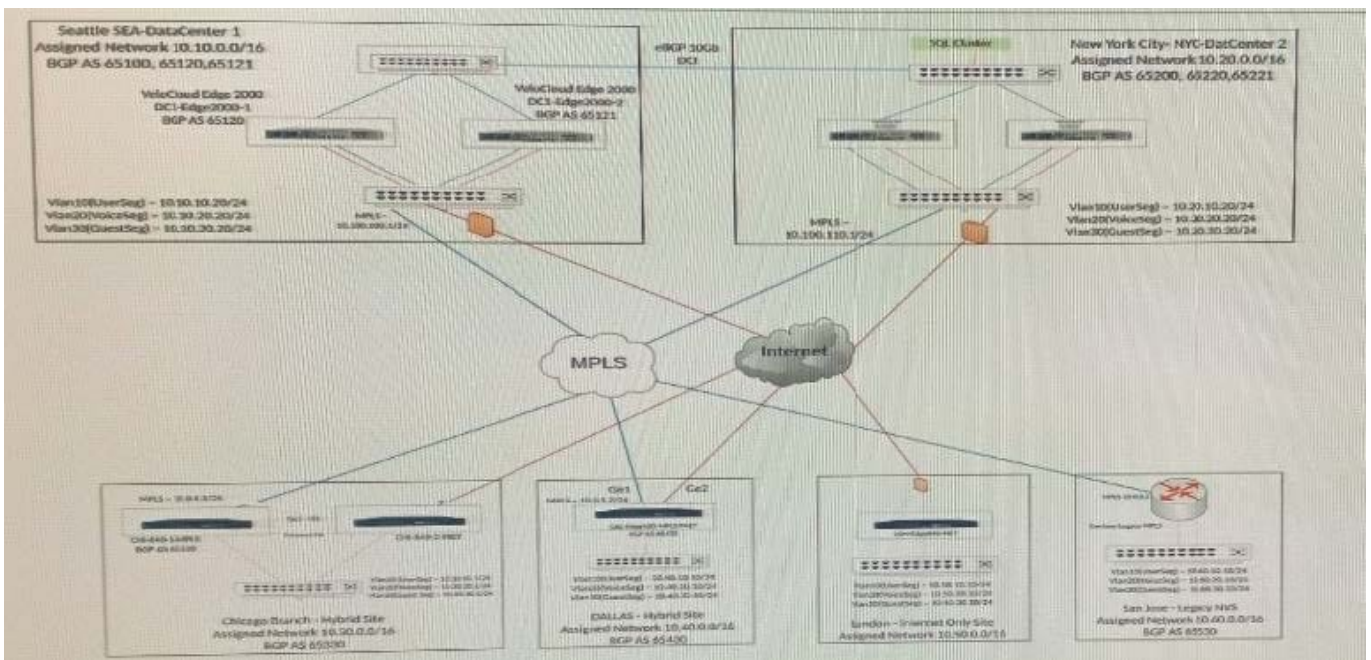
applications.

Users at multiple branches complain that a highly performant SQL Database cluster residing at the New York Data Center is not responding to database queries or inserts as expected. It is affecting the order management site. A network administrator investigates and finds that traffic from the branches are going through Seattle to reach the SQL Cluster in New York. The design for this SD-WAN network does not call for routing security.

The SQL Cluster is reachable through either Data Center, but for performance reasons, must flow through the New York DC. The network administrator has verified that the routes are not present in the OFC and the BGP neighborship is down in Network Services.

Refer to the Exhibit(s).

Exhibit.



What should the administrator verify?

A. The BGP configuration has a filter in place to deny the prefix in New York.



- B. The BGP Authentication matches on both sides.
- C. The BGP configuration has a filter in place to deny the prefix in Seattle.
- D. Backhauling through the Seattle DC is disabled.

Correct Answer: D

[5V0-41.20 Practice Test](#)

[5V0-41.20 Exam Questions](#)

[5V0-41.20 Braindumps](#)