



600-660^{Q&As}

Implementing Cisco Application Centric Infrastructure - Advanced

Pass Cisco 600-660 Exam with 100% Guarantee

Free Download Real Questions & Answers **PDF** and **VCE** file from:

<https://www.geekcert.com/600-660.html>

100% Passing Guarantee
100% Money Back Assurance

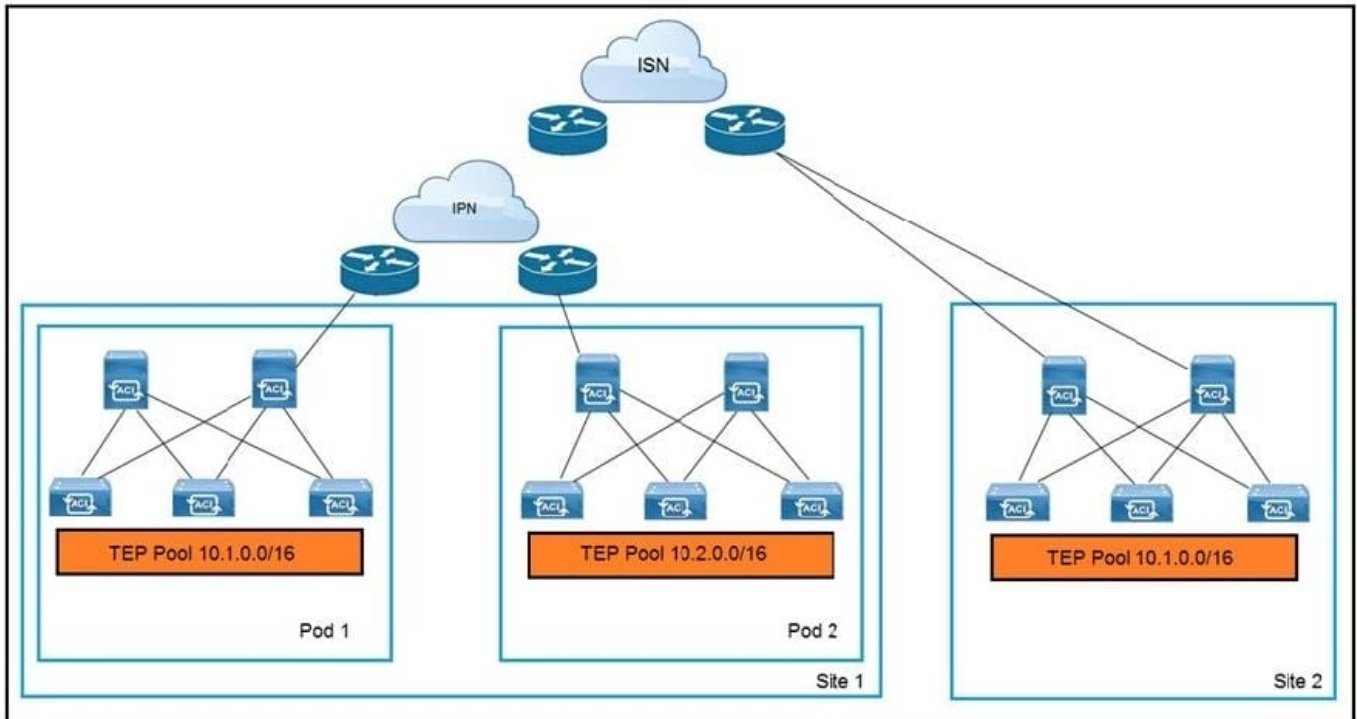
Following Questions and Answers are all new published by Cisco
Official Exam Center

- ⚙️ **Instant Download** After Purchase
- ⚙️ **100% Money Back** Guarantee
- ⚙️ **365 Days** Free Update
- ⚙️ **800,000+** Satisfied Customers





QUESTION 1



Refer to the exhibit. An engineer extends a Cisco ACI Multi-Pod setup to a Cisco ACI Multi-Site implementation. Which action allows the interconnection?

- A. Configure BIDIR-PIM in the IPN and ISN
- B. Use dedicated uplinks on Site 1 spines for ISN connections
- C. Connect all spines to the IPN and ISN
- D. Filter the advertisement of the Site 2 TEP pool into the IPN

Correct Answer: A

QUESTION 2

What are two characteristics of Cisco ACI and Spanning Tree Protocol interaction? (Choose two.)

- A. When a TCN BPDU is received in a VLAN, Cisco ACI flushes the endpoints for the associated encapsulation.
- B. STP BPDUs are dropped due to MCP.
- C. MST BPDUs are flooded correctly in Cisco ACI fabric without additional configuration.
- D. BPDU filter and BPDU guard can be configured on Cisco ACI leaf edge ports.
- E. Cisco ACI must be configured as the STP root for all VLANs.



Correct Answer: DE

Reference: https://www.cisco.com/c/en/us/td/docs/switches/datacenter/aci/aci_virtual_edge/configuration/1-x/b_Virtual_Edge_Config_Guide_1_2_2/b_Virtual_Edge_Config_Guide_1_2_2_chapter_0101.html

QUESTION 3

Which action should be taken in Cisco ACI to reassign a unique globally scoped pcTag to an EPG that provides a global contract?

- A. Configure subnets that are treated as virtual IP
- B. Configure subnets that advertise externally
- C. Configure subnets that are shared between VRFs
- D. Configure subnets that are private to VRF

Correct Answer: C

Reference: <https://www.cisco.com/c/en/us/support/docs/cloud-systems-management/application-policy-infrastructure-controller-apic/119023-technote-apic-00.html>

QUESTION 4

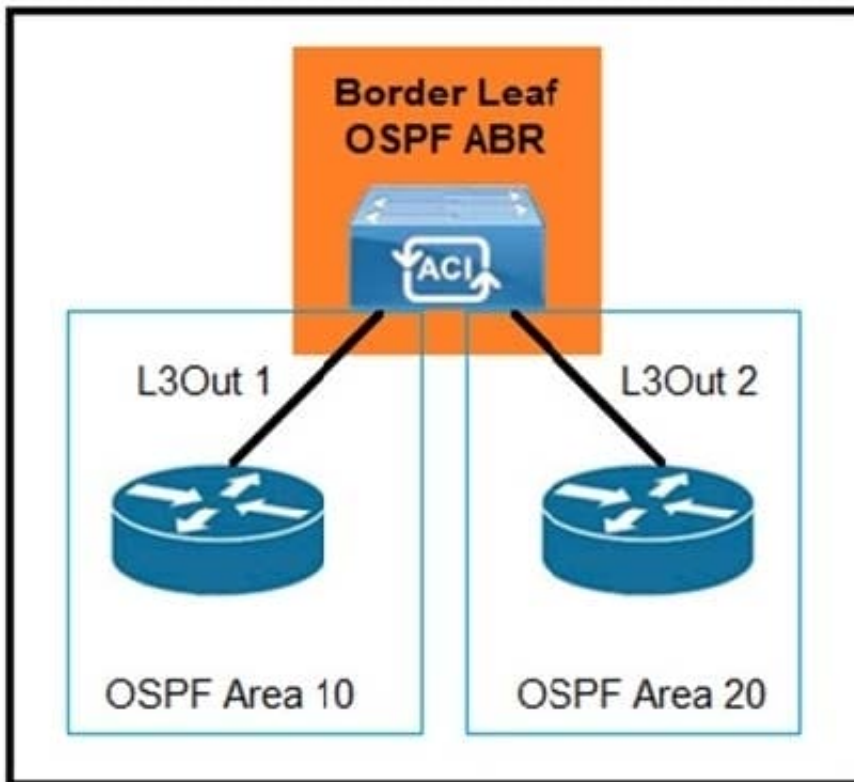
What does the VXLAN source port add to the overlay packet forwarding when it uses the hash of Layer 2, Layer 3, and Layer 4 headers of the inner packet?

- A. ECMP
- B. TCP optimization
- C. disabled fragmentation
- D. jumbo frames

Correct Answer: A

Reference: <https://www.cisco.com/c/en/us/support/docs/lan-switching/vlan/212682-virtual-extensible-lan-and-ethernet-virt.html>

QUESTION 5



Refer to the exhibit. Which configuration must be implemented to allow intra-VRF transit routing between the two external routers?

- A. Deploy both areas under the same L3Out policy
- B. Change one of the areas to area 0
- C. Configure OSPF virtual links
- D. Modify L3Out 1 to use the same OSPF area as L3Out 2

Correct Answer: A

[Latest 600-660 Dumps](#)

[600-660 Practice Test](#)

[600-660 Braindumps](#)