



6103^{Q&As}

Avaya ERS 8000 and Avaya VSP 9000 Implementation Exam

Pass Avaya 6103 Exam with 100% Guarantee

Free Download Real Questions & Answers **PDF** and **VCE** file from:

<https://www.geekcert.com/6103.html>

100% Passing Guarantee
100% Money Back Assurance

Following Questions and Answers are all new published by Avaya
Official Exam Center

-  **Instant Download** After Purchase
-  **100% Money Back** Guarantee
-  **365 Days** Free Update
-  **800,000+** Satisfied Customers





QUESTION 1

A port on the Virtual Services Platform (VSP) 9000 is down because of a link_flap condition as shown in the following output:

```
VSP-9012:1#show interfaces gigabitEthernet state 10/8
```

```
===== Port State
===== PORT NUM ADMINSTATUS
PORTSTATE REASON DATE ----- 10/8 up down
LINK-FLAP 10/28/10 00:22:50
```

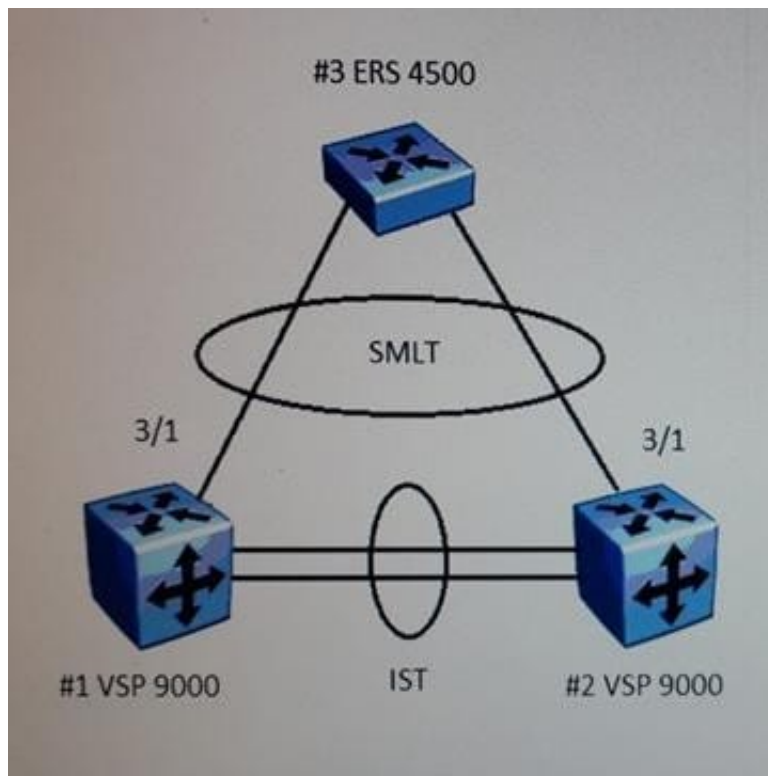
What is the most likely cause?

- A. The spanning tree protocol has detected a loop and placed the port in a blocked state.
- B. There is a physical problem, such as a cable problem.
- C. One side of the connection is configured for auto-negotiation and the other side is a fixed speed.
- D. The port is receiving a large number of destination unknown broadcast packets.

Correct Answer: D

QUESTION 2

Refer to the exhibit.





Simple Loop Prevention Protocol (SLPP) provides active protection against Layer 2 network loops on a per-VLAN basis. For the SLPP Tx process, the network administrator decides on which VLANs to enable SLPP. The hello packets are then replicated out all ports that are members of the SLPP-enabled VLAN.

Given the following information shown in the exhibit: A = InterSwitch Trunk (IST) B = Split MultiLink Trunk (SMLT) # 1 VSP 9000 # 2 VSP 9000 # 3 ERS 4500

When setting up the SLPP Rx process, which configuration role is setup on VSP #1?

- A. The VSP #1 Rx process is enabled on all SMLT VLANs to monitor for the ERS #3 SLPP packets.
- B. The VSP #1 Rx process is enabled on port 3/1 and the IST ports to monitor for the VSP #2 SLPP packets.
- C. The VSP # 1 Rx process is enabled on all SMLT VLANs to monitor for the VSP # 2 SLPP packets.
- D. The VSP # 1 RX process is enabled on port 3/1 to monitor VSP # 1 and VSP #2 SLPP packets.

Correct Answer: B

QUESTION 3

After a chassis failure, you replace the Avaya Ethernet Routing Switch 8800/8600 with a new chassis that has a new base MAC address. To transfer the existing license to this new chassis you must have the new base MAC address.

Which CLI command will show you the base MAC address of your new chassis?

- A. show sys-info
- B. show sys base-mac
- C. display sys info
- D. info sys base-mac

Correct Answer: A

QUESTION 4

QoS is the ability to manage the performance of data flows by giving treatment to the data flows, users, and applications.

For which two network problems would QoS be a good solution? (Choose two.)

- A. interface duplex mismatch
- B. slow route table convergence
- C. lack of bandwidth
- D. end-to-end delay
- E. network loops



Correct Answer: AE

QUESTION 5

A customer is mirroring multiple ports to a single monitor port.

What happens if the mirrored traffic exceeds the bandwidth of the monitor port?

- A. The traffic will be buffered until there is available bandwidth.
- B. The excess traffic will be dropped randomly.
- C. The excess traffic will be dropped based upon the mirror priority of the ingress port.
- D. The excess traffic will be dropped based upon the port priority of the ingress port.

Correct Answer: B

[Latest 6103 Dumps](#)

[6103 Study Guide](#)

[6103 Exam Questions](#)