



640-554^{Q&As}

Implementing Cisco IOS Network Security (IINS v2.0)

Pass Cisco 640-554 Exam with 100% Guarantee

Free Download Real Questions & Answers **PDF** and **VCE** file from:

<https://www.geekcert.com/640-554.html>

100% Passing Guarantee
100% Money Back Assurance

Following Questions and Answers are all new published by Cisco
Official Exam Center

-  **Instant Download** After Purchase
-  **100% Money Back** Guarantee
-  **365 Days** Free Update
-  **800,000+** Satisfied Customers





QUESTION 1

When using a stateful firewall, which information is stored in the stateful session flow table?

- A. the outbound and inbound access rules (ACL entries)
- B. the source and destination IP addresses, port numbers, TCP sequencing information, and additional flags for each TCP or UDP connection associated with a particular session
- C. all TCP and UDP header information only
- D. all TCP SYN packets and the associated return ACK packets only
- E. the inside private IP address and the translated inside global IP address

Correct Answer: B

<http://www.cisco.com/en/US/docs/security/asa/asa82/configuration/guide/intro.html>

Stateful Inspection Overview

All traffic that goes through the ASA is inspected using the Adaptive Security Algorithm and either allowed through or dropped. A simple packet filter can check for the correct source address, destination address, and ports, but it does not

check that the packet sequence or flags are correct. A filter also checks every packet against the filter, which can be a slow process.

A stateful firewall like the ASA, however, takes into consideration the state of a packet:

?Is this a new connection?

If it is a new connection, the ASA has to check the packet against access lists and perform other tasks to determine if the packet is allowed or denied. To perform this check, the first packet of the session goes through the "session

management path," and depending on the type of traffic, it might also pass through the "control plane path."

The session management path is responsible for the following tasks:

?Performing the access list checks

?Performing route lookups

?Allocating NAT translations (xlates)

?Establishing sessions in the";fast pat";

The ASA creates forward and reverse flows in the fast path for TCP traffic; the ASA also creates connection state information for connectionless protocols like UDP, ICMP (when you enable ICMP inspection), so that they can also use the fast

path.

Some packets that require Layer 7 inspection (the packet payload must be inspected or altered) are passed on to the control plane path. Layer 7 inspection engines are required for protocols that have two or more channels:



A data channel, which uses well-known port numbers, and a control channel, which uses different port numbers for each session. These protocols include FTP, H.323, and SNMP.

?Is this an established connection?

If the connection is already established, the ASA does not need to re-check packets; most matching packets can go through the "fast" path in both directions. The fast path is responsible for the following tasks:

?IP checksum verification

?Session lookup

?TCP sequence number check

?NAT translations based on existing sessions

?Layer 3 and Layer 4 header adjustments

Data packets for protocols that require Layer 7 inspection can also go through the fast path. Some established session packets must continue to go through the session management path or the control plane path. Packets that go through the

session management path include HTTP packets that require inspection or content filtering. Packets that go through the control plane path include the control packets for protocols that require Layer 7 inspection.

QUESTION 2

Which type of intrusion prevention technology is the primary type used by the Cisco IPS security appliances?

- A. profile-based
- B. rule-based
- C. protocol analysis-based
- D. signature-based
- E. NetFlow anomaly-based

Correct Answer: D

http://www.cisco.com/en/US/docs/ios/12_3t/12_3t8/feature/guide/gt_fwids.html

The Signature Definition File A Signature Definition file (SDF) has definitions for each signature it contains. After signatures are loaded and compiled onto a router running Cisco IOS IPS, IPS can begin detecting the new signatures immediately. If customers do not use the default, built-in signatures that are shipped with the routers, users can choose to download one of two different types of SDFs: the attack-drop.sdf file (which is a static file) or a dynamic SDF (which is dynamically updated and accessed from Cisco.com). The attack-drop.sdf file is available in flash on all Cisco access routers that are shipped with Cisco IOS Release 12.3(8)T or later. The attack-drop.sdf file can then be loaded directly from flash into the Cisco IOS IPS system. If flash is erased, the attack-drop.sdf file may also be erased. Thus, if you are copying a Cisco IOS image to flash and are prompted to erase the contents of flash before copying the new image, you might risk erasing the attack-drop.sdf file. If this occurs, the router will refer to the built-in signatures within the Cisco IOS image. The attack-drop.sdf file can also be downloaded onto your router from Cisco.com. To help detect the latest vulnerabilities, Cisco provides signature updates on Cisco.com on a regular basis. Users can use SDM or VMS to download these signature updates, tune the signature parameters as necessary, and deploy the new SDF to a Cisco



IOS IPS router.

QUESTION 3

Configure > Security > Firewall > Firewall Components > Zone Pairs

Additional Tasks

Zone Pairs

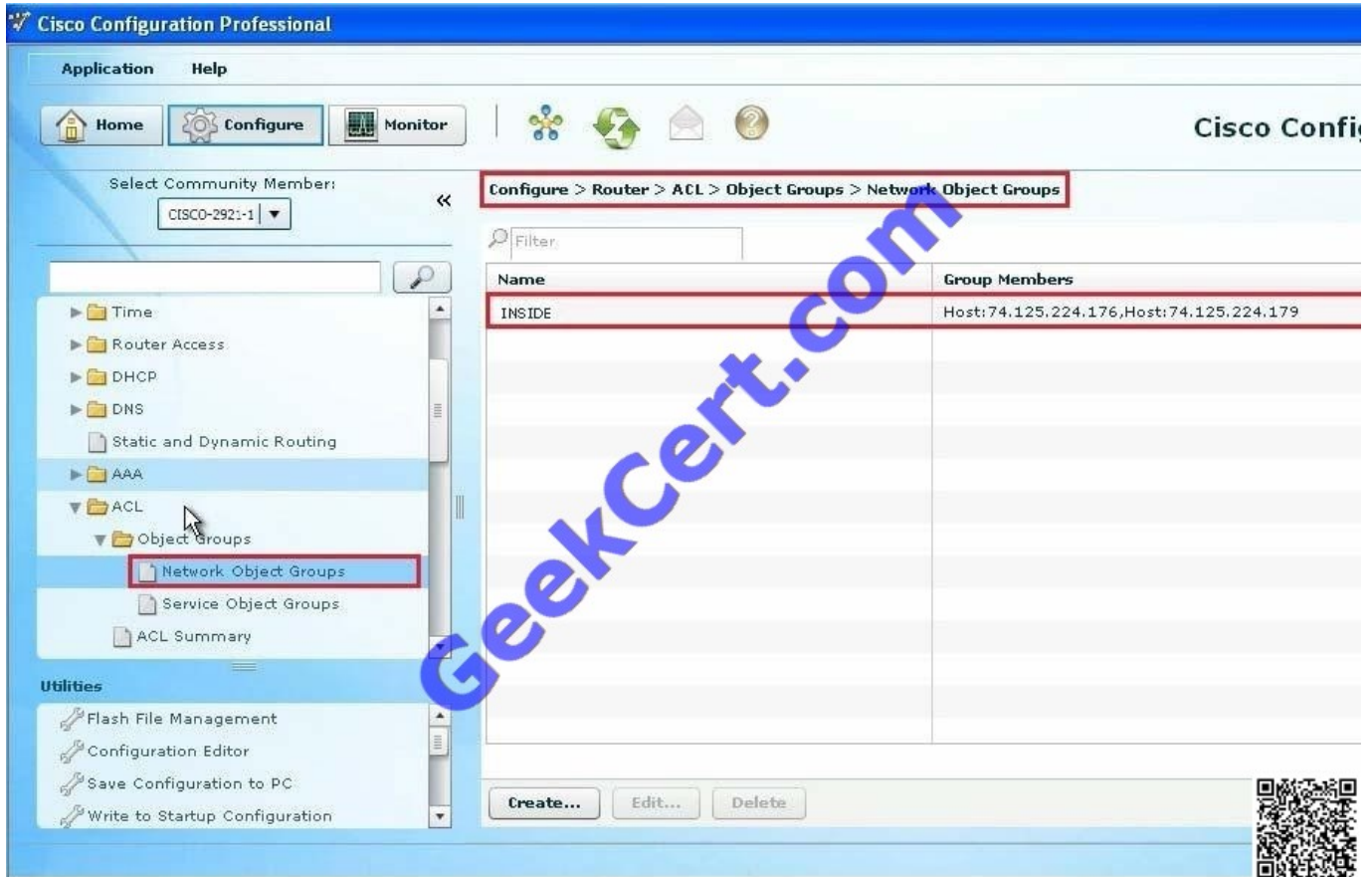
Zone Pair	Source	Destination
sdm-zip-OUT-IN	out-zone	in-zone
ccp-zp-self-out	self	out-zone
ccp-zp-in-out	in-zone	out-zone
ccp-zp-in-dmz	in-zone	dmz-zone
ccp-zp-out-dmz	out-zone	dmz-zone
ccp-zp-out-self	out-zone	self

Scenario:



You are the security admin for a small company. This morning your manager has supplied you with a list of Cisco ISR and CCP configuration questions. Using CCP, your job is to navigate the pre-configured CCP in order to find answers to

your business question.



What is included in the Network Object Group INSIDE? (Choose two)

- A. Network 192.168.1.0/24
- B. Network 175.25.133.0/24
- C. Network 10.0.10.0/24
- D. Network 10.0.0.0/8
- E. Network 192.168.1.0/8

Correct Answer: BC

QUESTION 4

What are purposes of the Internet Key Exchange in an IPsec VPN? (Choose two.)

- A. The Internet Key Exchange protocol establishes security associations



- B. The Internet Key Exchange protocol provides data confidentiality
- C. The Internet Key Exchange protocol provides replay detection
- D. The Internet Key Exchange protocol is responsible for mutual authentication

Correct Answer: AD

Reference: <https://tools.ietf.org/html/rfc4306>

QUESTION 5

Which command causes a Layer 2 switch interface to operate as a Layer 3 interface?

- A. no switchport nonnegotiate
- B. switchport
- C. no switchport mode dynamic auto
- D. no switchport

Correct Answer: D

[640-554 PDF Dumps](#)

[640-554 Practice Test](#)

[640-554 Exam Questions](#)



To Read the [Whole Q&As](#), please purchase the [Complete Version](#) from [Our website](#).

Try our product !

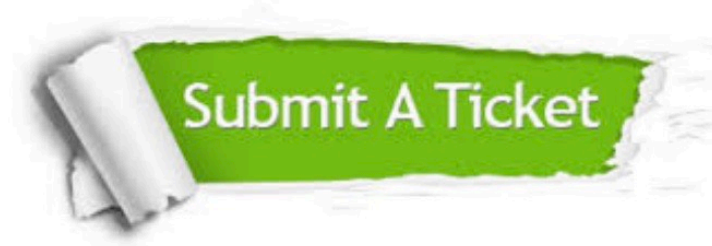
- 100% Guaranteed Success
- 100% Money Back Guarantee
- 365 Days Free Update
- Instant Download After Purchase
- 24x7 Customer Support
- Average 99.9% Success Rate
- More than 800,000 Satisfied Customers Worldwide
- Multi-Platform capabilities - [Windows](#), [Mac](#), [Android](#), [iPhone](#), [iPod](#), [iPad](#), [Kindle](#)

We provide exam PDF and VCE of Cisco, Microsoft, IBM, CompTIA, Oracle and other IT Certifications. You can view Vendor list of All Certification Exams offered:

<https://www.geekcert.com/allproducts>

Need Help

Please provide as much detail as possible so we can best assist you.
To update a previously submitted ticket:



 <p>One Year Free Update Free update is available within One Year after your purchase. After One Year, you will get 50% discounts for updating. And we are proud to boast a 24/7 efficient Customer Support system via Email.</p>	 <p>Money Back Guarantee To ensure that you are spending on quality products, we provide 100% money back guarantee for 30 days from the date of purchase.</p>	 <p>Security & Privacy We respect customer privacy. We use McAfee's security service to provide you with utmost security for your personal information & peace of mind.</p>
---	---	--

Any charges made through this site will appear as Global Simulators Limited.
All trademarks are the property of their respective owners.
Copyright © geekcert, All Rights Reserved.