



642-618^{Q&As}

Deploying Cisco ASA Firewall Solutions (FIREWALL v2.0)

Pass Cisco 642-618 Exam with 100% Guarantee

Free Download Real Questions & Answers **PDF** and **VCE** file from:

<https://www.geekcert.com/642-618.html>

100% Passing Guarantee
100% Money Back Assurance

Following Questions and Answers are all new published by Cisco
Official Exam Center

-  **Instant Download** After Purchase
-  **100% Money Back** Guarantee
-  **365 Days** Free Update
-  **800,000+** Satisfied Customers





QUESTION 1

Refer to the exhibit.



| Match Criteria: Original Packet | | | | | | Action: Translated Packet | | |
|---------------------------------|-------------|-----------|-----------|--------------------------|---------|-----------------------------|-------------|-------------|
| # | Source Intf | Dest Intf | Source | Destination | Service | Source | Destination | Service |
| "Network Object" NAT (No rules) | | | | | | | | |
| 1 | inside | outside | insidenet | Partner-internal-subnets | any | insidenatted (0) outside | outnatted | -- Original |

Which option completes the CLI NAT configuration command to match the Cisco ASDM NAT configuration?

```
object network insidenatted range 10.1.2.10 10.1.2.20 ! object network insidenet range 172.16.1.10 172.16.1.100 !  
object network outnatted range 192.168.3.100 192.168.3.150 ! nat (inside,outside) after-auto 1  
_____?
```

- A. source dynamic insidenet insidenatted destination static Partner-internal-subnets outnatted
- B. source dynamic insidenet insidenatted interface destination static Partner-internal-subnets outnatted
- C. source dynamic insidenet insidenatted destination static Partner-internal-subnets outnatted interface
- D. source dynamic insidenet interface destination static Partner-internal-subnets outnatted
- E. source dynamic insidenatted insidenet destination static Partner-internal-subnets outnatted
- F. source dynamic insidenatted interface destination static Partner-internal-subnets outnatted

Correct Answer: B

QUESTION 2

When enabling a Cisco ASA to send syslog messages to a syslog server, which syslog level will produce the most messages?

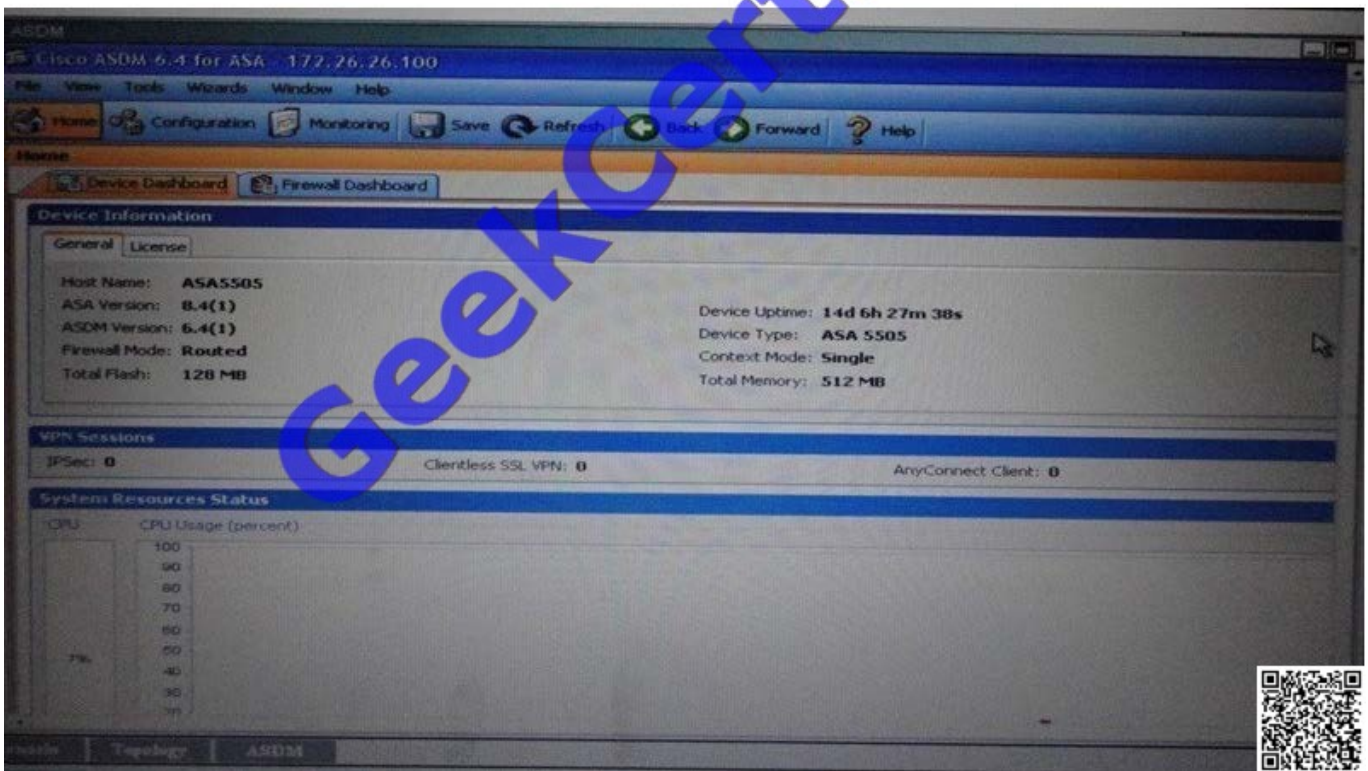
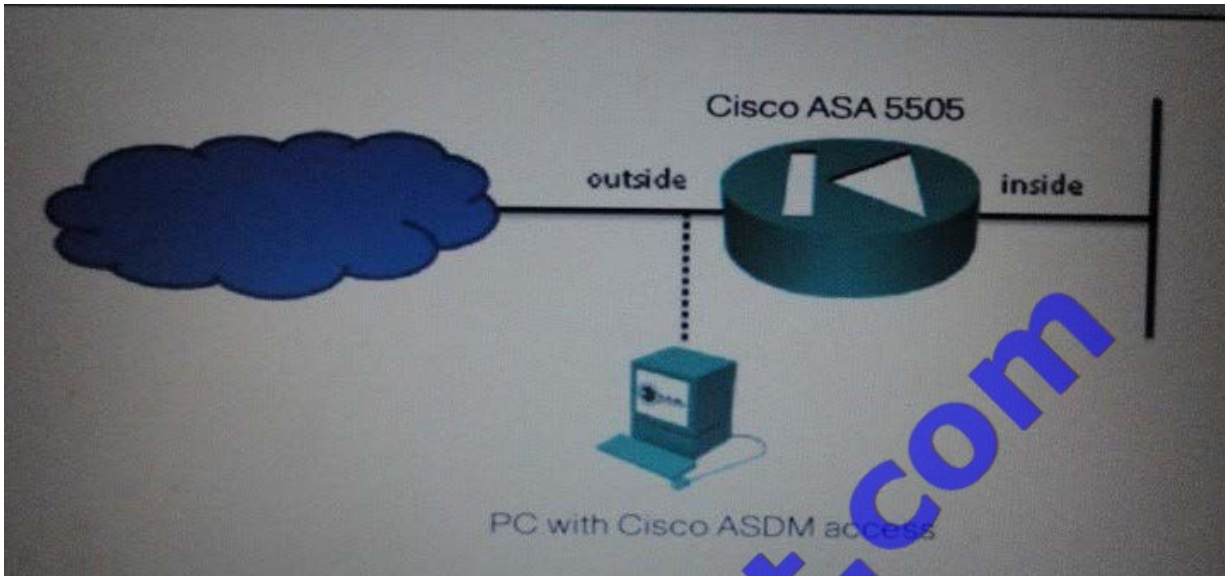
- A. notifications
- B. informational
- C. alerts
- D. emergencies
- E. errors
- F. debugging

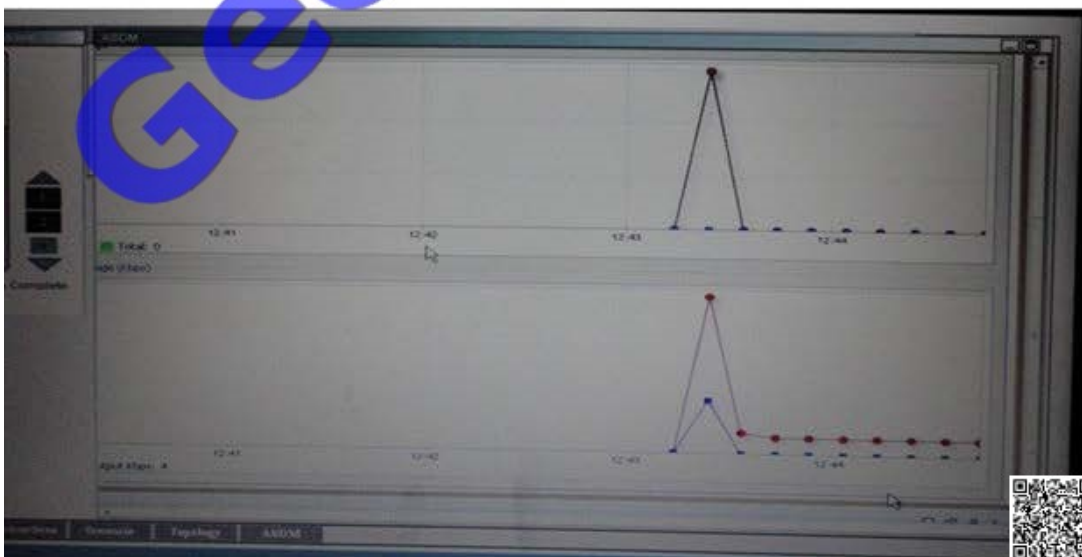
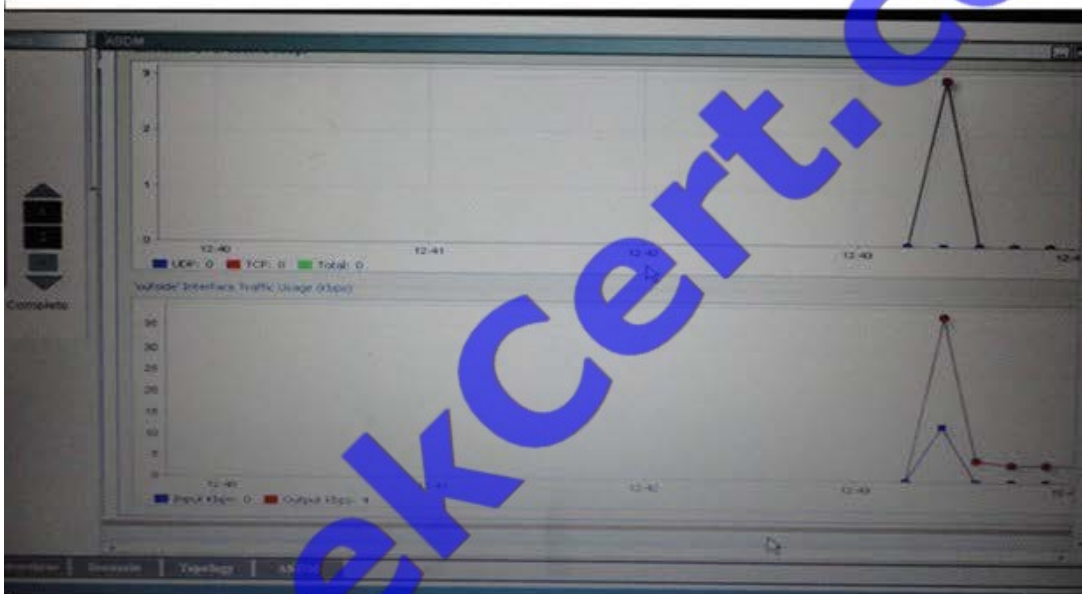
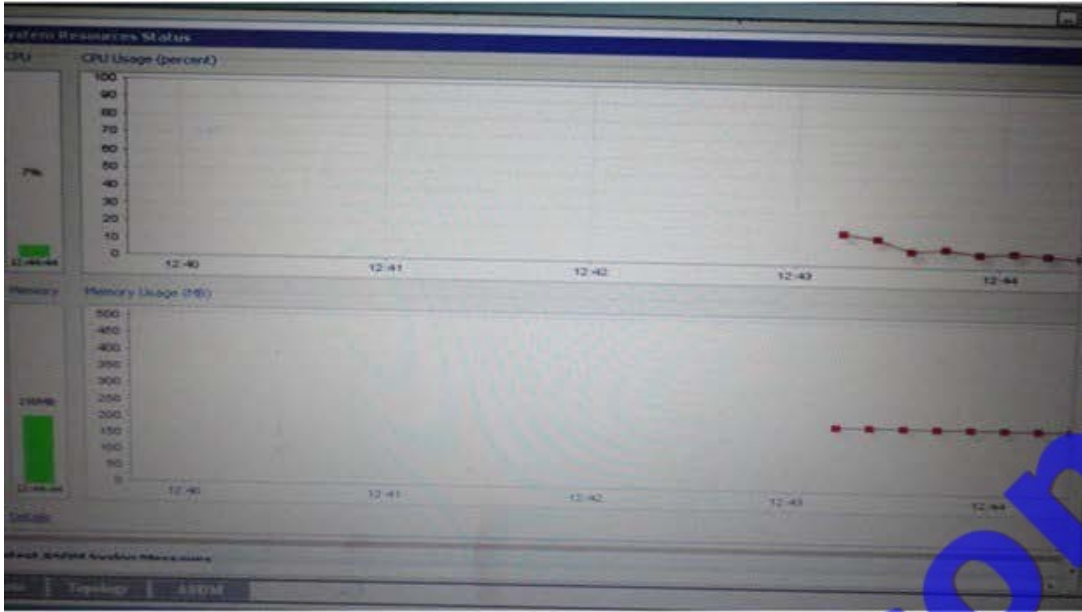
Correct Answer: F

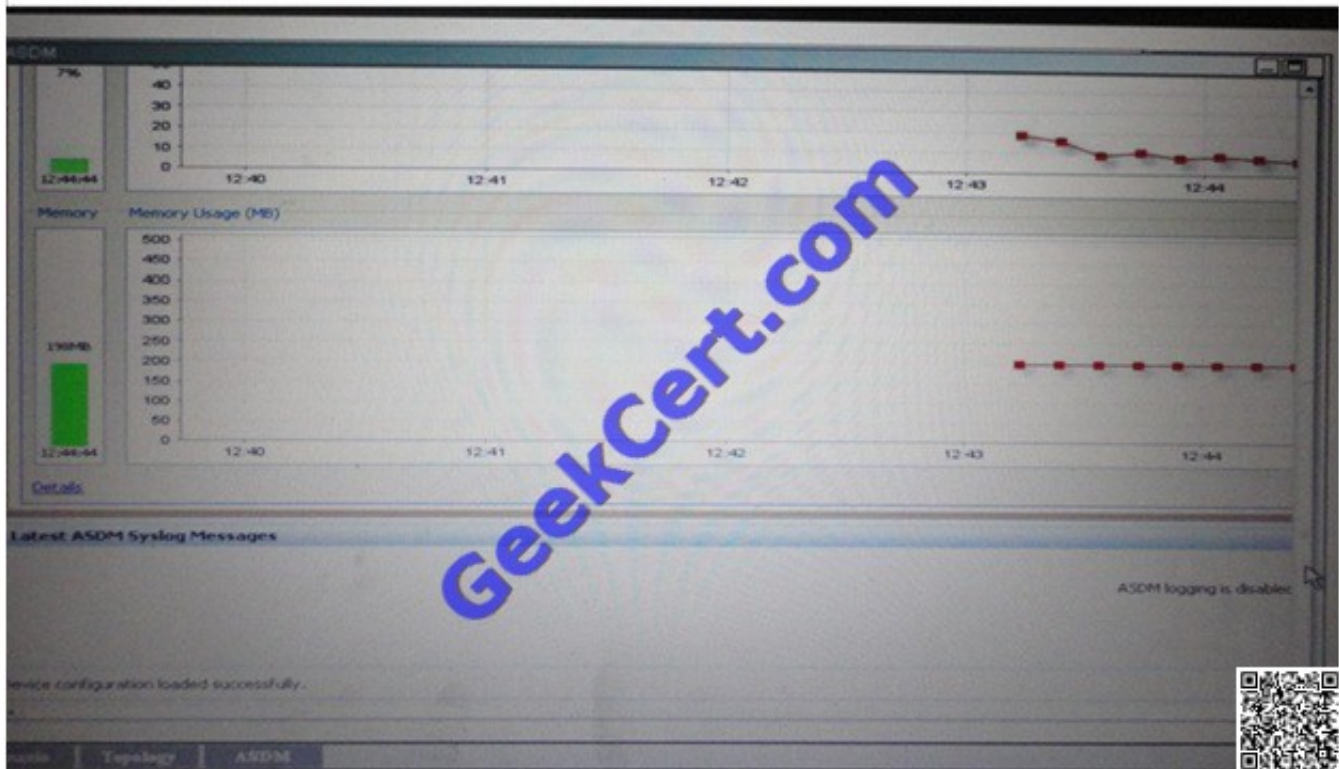
QUESTION 3



Scenario: To access Cisco ASDM, click the PC icon in the Topology window, ASDM and answer the following question as:







Which two statements about the running configuration of the Cisco ASA are true? (Choose Two)

- A. The auto NAT configuration causes all traffic arriving on the inside interface destined to any outside destinations to be translated with dynamic port address transmission using the outside interface IP address.
- B. The Cisco ASA is using the Cisco ASDM image from disk1:/asdm-642.bin
- C. The Cisco ASA is setup as the DHCP server for hosts that are on the inside and outside interfaces.
- D. SSH and Cisco ASDM access to the Cisco ASA requires AAA authentication using the LOCAL user database.
- E. The Cisco ASA is using a persistent self-signed certificate so users can authenticate the Cisco ASA when accessing it via ASDM

Correct Answer: AE

Have to check each and every setting -- expect different results for different exams



Cisco ASDM 6.3 for ASA - Demo mode

File View Tools Wizards Window Help Look For: NAT control

Home Configuration Monitoring Save Refresh Back Forward Help

Firewall

- Access Rules
- NAT Rules
- Service Policy Rules
- AAA Rules
- Filter Rules
- Public Servers
- URL Filtering Servers
- Threat Detection
- Botnet Traffic Filter
- Botnet Database
- Black and White Lists
- DNS Snooping
- Traffic Settings
- Objects
- Unified Communications
- Advanced
- Anti-Spoofing
- Certificate Management
- Identity Certificates
- CA Certificates
- Local Certificate Authc
- Fragment
- IP Audit
- IP Audit Policy
- IP Audit Signatures
- SUNRPC Server

Device Setup

Firewall

Remote Access VPN

Site-to-Site VPN

Device Management

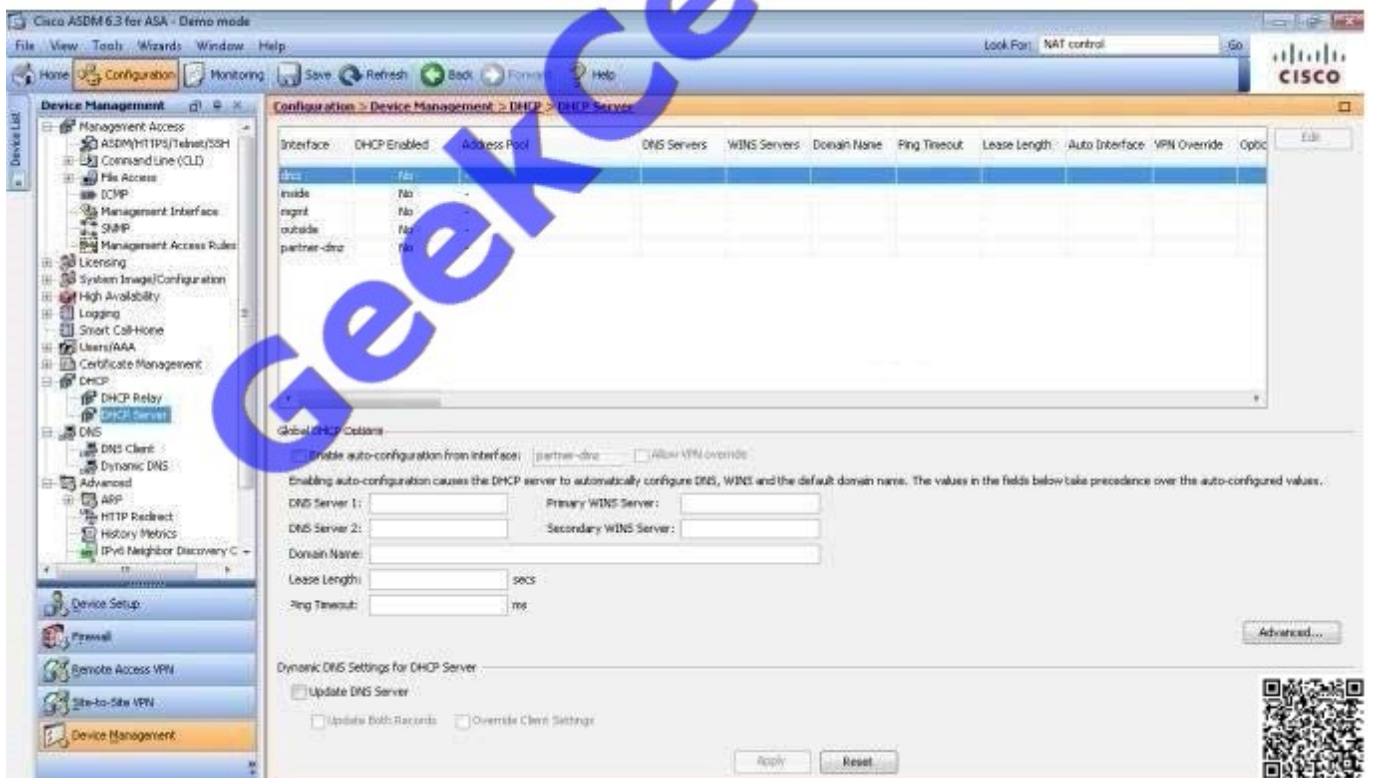
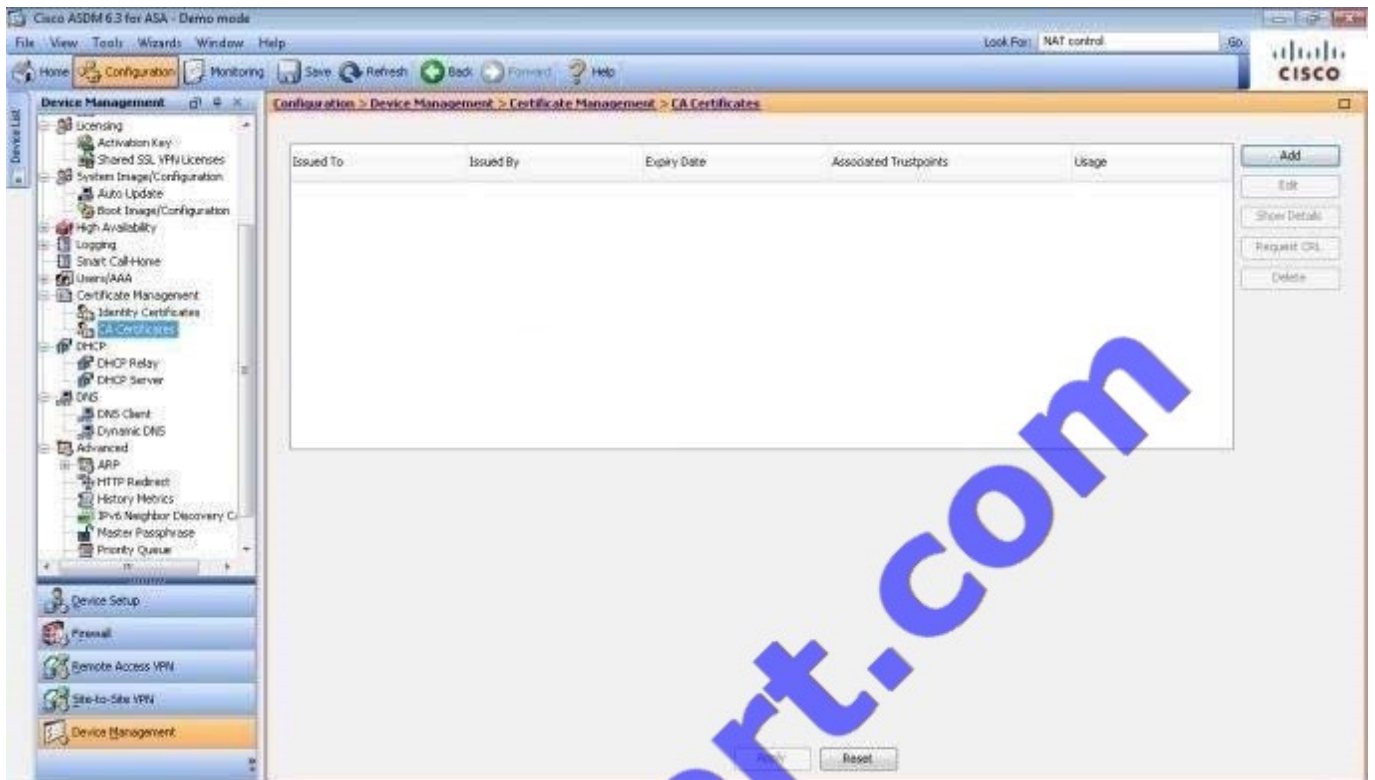
Configuration > Firewall > NAT Rules

Match Criteria: Original Packet Action: Translated Packet

| # | Source Intf | Dest Intf | Source | Destination | Service | Source | Destination | Service | |
|--------------------------------|-------------|-------------|-------------------|-------------------|---------|-----------------|----------------|----------------|--|
| | inside | partner-dmz | All-Inside-Sub... | Partner-inte... | any | -- Original -- | -- Original -- | -- Original -- | |
| | partner-dmz | inside | Partner-inte... | All-Inside-Sub... | any | -- Original -- | -- Original -- | -- Original -- | |
| Network Object NAT (Rules 2-6) | | | | | | | | | |
| | inside | outside | obj-10.1.1.10 | any | any | 100.1.1.100 (S) | -- Original -- | -- Original -- | |
| | outside | inside | any | 100.1.1.100 | any | -- Original -- | obj-10.1.1.10 | -- Original -- | |
| | dmz | outside | WWW_Server | any | any | 198.52.1.50 (S) | -- Original -- | -- Original -- | |
| | outside | dmz | any | 198.52.1.50 | any | -- Original -- | WWW_Server | -- Original -- | |
| | dmz | outside | obj-12.1.1.1 | any | any | 171.1.1.1 (S) | -- Original -- | -- Original -- | |
| | outside | dmz | any | 171.1.1.1 | any | -- Original -- | obj-12.1.1.1 | -- Original -- | |
| | dmz | outside | obj-172.16... | any | any | obj-198.52.5... | -- Original -- | -- Original -- | |
| | inside | outside | Finance-net... | any | any | obj-198.52.5... | -- Original -- | -- Original -- | |

Diagram:

Apply Reset



QUESTION 4

Which flag not shown in the output of the show conn command is used to indicate that an initial SYN packet is from the outside (lower security-level interface)?



```
ASA5520# show conn
29 in use, 63 most used
TCP out 10.10.49.10:23 in 10.1.1.15:1026 idle 0:00:22 bytes 1774 flags UO
<output omitted>
```



- A. B
- B. D
- C. b
- D. A
- E. a
- F. i
- G. I
- H. O

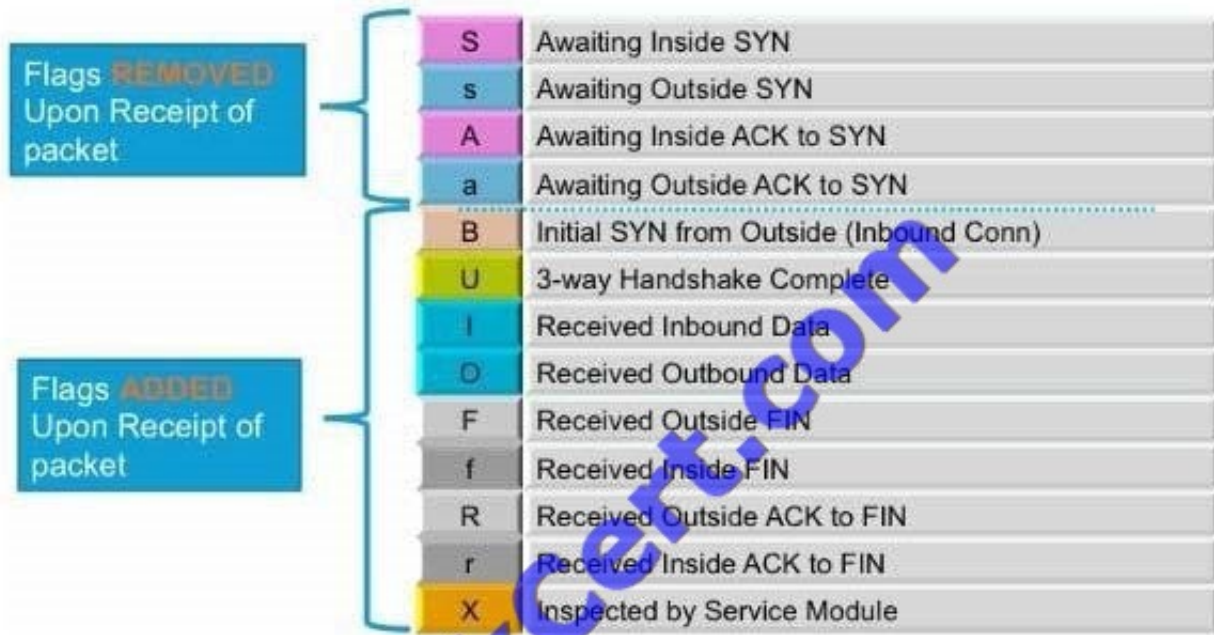
Correct Answer: A

http://www.cisco.com/en/US/products/ps6120/products_tech_note09186a0080bcad00.shtml

Originally answer from dump was A meaning B or initial SYN from outside but B is not shown in the output.

The question used to read ".. Which flag shown in the output of the show conn command is used to indicate that an initial SYN packet is from the outside (lower security-level interface)?

TCP Connection Flag Values



Flags: A - awaiting inside ACK to SYN, a - awaiting outside ACK to SYN,
 B - initial SYN from outside, b - TCP state-bypass or nailed, C - CTIOBE media,
 D - DNS, d - dump, E - outside back Connection, F - outside FIN, f - inside FIN,
 G - group, g - MGCP, H - H.323, h - H.225.0, l - inbound data,
 i - incomplete, J - GTP, j - GTP data, K - GTP t3-response
 k - Skinny media, M - SMTP data, m - SIP media, n - GUP
 O - outbound data, P - inside back connection, p - Phone-proxy TFTP connection,
 q - SQL* Net data, R - outside acknowledged FIN,
 R - UDP SUNRPC, r - inside acknowledged FIN, S - awaiting inside SYN,
 s - awaiting outside SYN, T - SIP, t - SIP transient, U - up,
 V - VPN orphan, W - WAAS,
 X - inspected by service module



QUESTION 5

When the Cisco ASA detects scanning attacks, how long is the attacker who is performing the scan shunned?



- A. 120 seconds
- B. 600 seconds
- C. 1200 seconds
- D. 3600 seconds
- E. 6000 seconds

Correct Answer: B





To Read the [Whole Q&As](#), please purchase the [Complete Version](#) from [Our website](#).

Try our product !

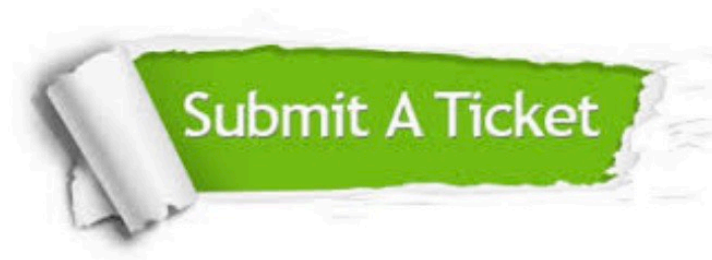
- 100% Guaranteed Success
- 100% Money Back Guarantee
- 365 Days Free Update
- Instant Download After Purchase
- 24x7 Customer Support
- Average 99.9% Success Rate
- More than 800,000 Satisfied Customers Worldwide
- Multi-Platform capabilities - [Windows](#), [Mac](#), [Android](#), [iPhone](#), [iPod](#), [iPad](#), [Kindle](#)

We provide exam PDF and VCE of Cisco, Microsoft, IBM, CompTIA, Oracle and other IT Certifications. You can view Vendor list of All Certification Exams offered:

<https://www.geekcert.com/allproducts>

Need Help

Please provide as much detail as possible so we can best assist you.
To update a previously submitted ticket:



| | | |
|---|---|--|
|  <p>One Year Free Update Free update is available within One Year after your purchase. After One Year, you will get 50% discounts for updating. And we are proud to boast a 24/7 efficient Customer Support system via Email.</p> |  <p>Money Back Guarantee To ensure that you are spending on quality products, we provide 100% money back guarantee for 30 days from the date of purchase.</p> |  <p>Security & Privacy We respect customer privacy. We use McAfee's security service to provide you with utmost security for your personal information & peace of mind.</p> |
|---|---|--|

Any charges made through this site will appear as Global Simulators Limited.
All trademarks are the property of their respective owners.
Copyright © geekcert, All Rights Reserved.