



# 642-618<sup>Q&As</sup>

Deploying Cisco ASA Firewall Solutions (FIREWALL v2.0)

## Pass Cisco 642-618 Exam with 100% Guarantee

Free Download Real Questions & Answers **PDF** and **VCE** file from:

<https://www.geekcert.com/642-618.html>

100% Passing Guarantee  
100% Money Back Assurance

Following Questions and Answers are all new published by Cisco  
Official Exam Center

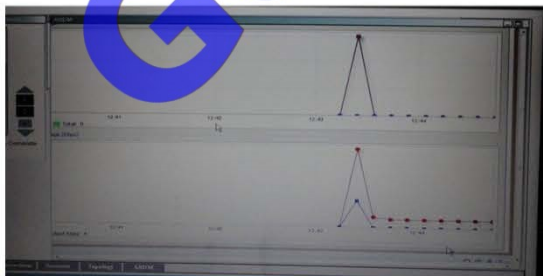
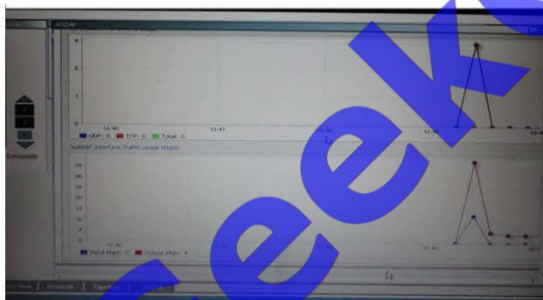
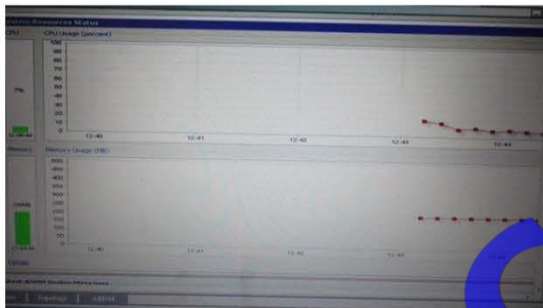
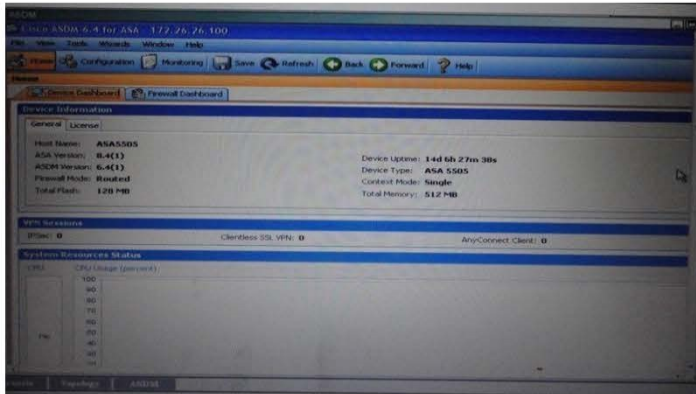
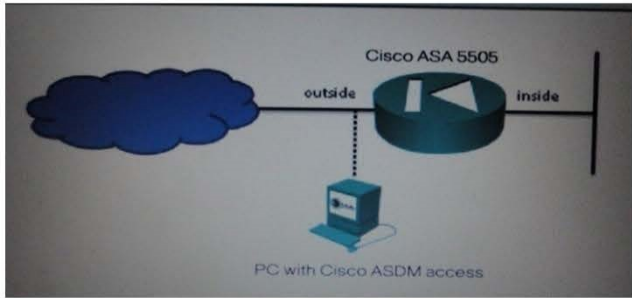
-  **Instant Download** After Purchase
-  **100% Money Back** Guarantee
-  **365 Days** Free Update
-  **800,000+** Satisfied Customers

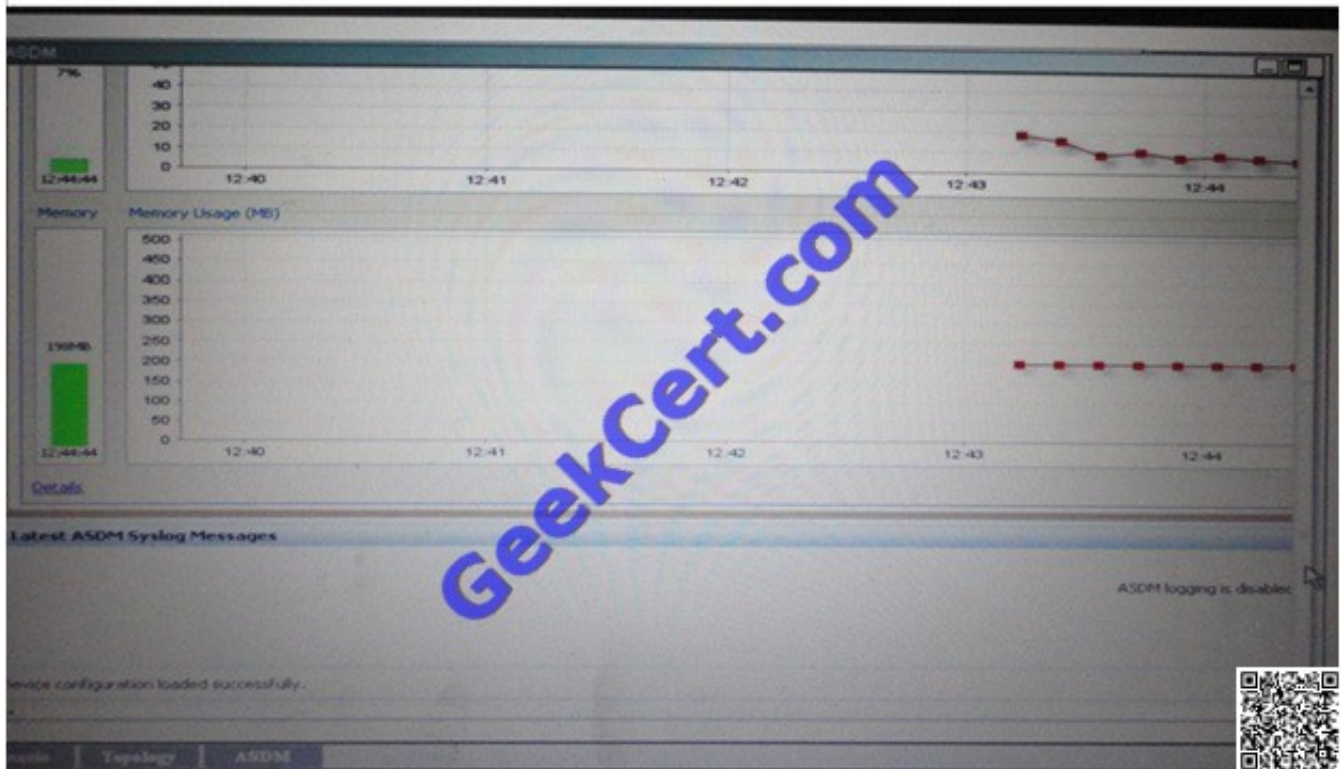




### QUESTION 1

Scenario: To access Cisco ASDM, click the PC icon in the Topology window, ASDM and answer the following question as:





Which statement about the Cisco ASA configuration is true?

- A. All input traffic on the inside interface is denied by the global ACL.
- B. All input and output traffic on the outside interface is denied by the global ACL.
- C. ICMP echo-request traffic is permitted from the inside to the outside, and ICMP echo-reply will be permitted from the outside back to inside.
- D. HTTP inspection is enabled in the global policy.
- E. Traffic between two hosts connected to the same interface is permitted.

Correct Answer: B



Cisco ASDM 6.3 for ASA - Demo mode

File View Tools Wizards Window Help Look For: NAT control

Home Configuration Monitoring Save Refresh Back Forward Help

Firewall Configuration > Firewall > NAT Rules

Match Criteria: Original Packet				Action: Translated Packet				
#	Source Intf	Dest Intf	Source	Destination	Service	Source	Destination	Service
	inside	partner-dmz	All-Inside-Sub...	Partner-inte...	any	-- Original --	-- Original --	-- Original --
	partner-dmz	inside	Partner-inte...	All-Inside-Sub...	any	-- Original --	-- Original --	-- Original --
Network Object NAT (Rules 2-6)								
	inside	outside	obj-10.1.1.10	any	any	100.1.1.100 (S)	-- Original --	-- Original --
	outside	inside	any	100.1.1.100	any	-- Original --	obj-10.1.1.10	-- Original --
	dmz	outside	WWW_Server	any	any	198.52.1.50 (S)	-- Original --	-- Original --
	outside	dmz	any	198.52.1.50	any	-- Original --	WWW_Server	-- Original --
	dmz	outside	obj-12.1.1.1	any	any	171.1.1.1 (S)	-- Original --	-- Original --
	outside	dmz	any	171.1.1.1	any	-- Original --	obj-12.1.1.1	-- Original --
	dmz	outside	obj-172.16...	any	any	obj-198.52.5...	-- Original --	-- Original --
	inside	outside	Finance-net...	any	any	obj-198.52.5...	-- Original --	-- Original --

QUESTION 2

Refer to the exhibit.

```
ASA5520# show conn
29 in use, 63 most used
TCP out 10.10.49.10:23 in 10.1.1.15:1026 idle 0:00:22 bytes 1774 flags IIIQ
<output omitted>
```

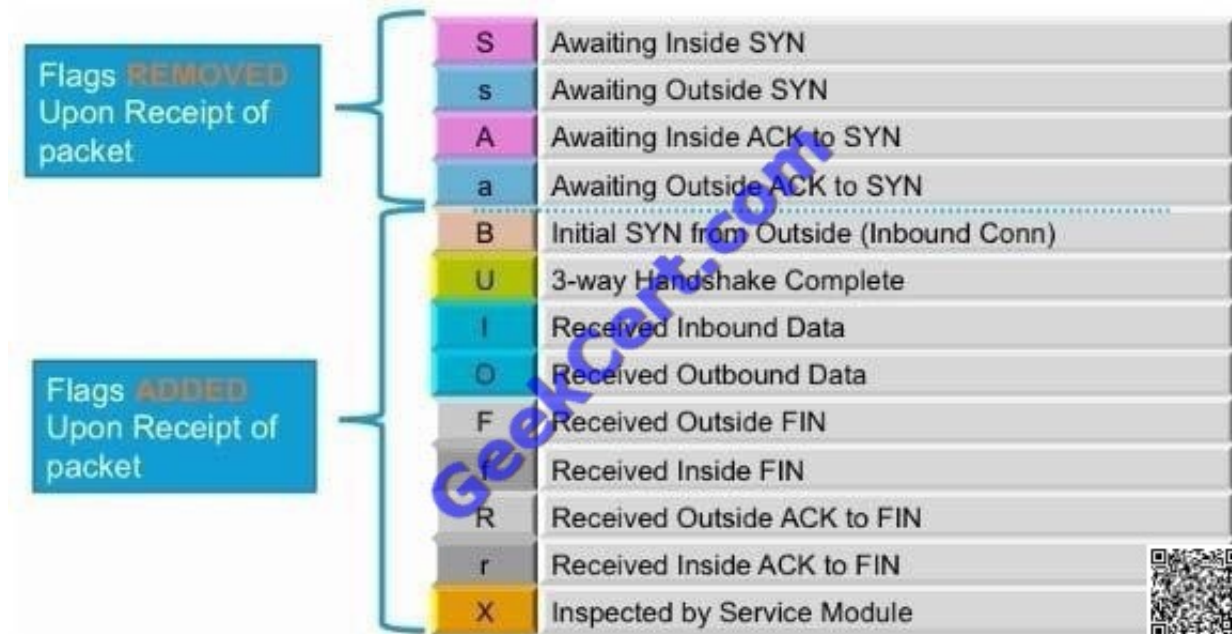
Which two statements are true? (Choose two.)

- A. The connection is awaiting outside ACK to SYN.
- B. The connection is initiated from the inside.
- C. The connection is active and has received inbound and outbound data.
- D. The connection is an incomplete TCP connection.



E. The connection is a DNS connection.

Correct Answer: BC



Flags: A - awaiting inside ACK to SYN, a - awaiting outside ACK to SYN,  
 B - initial SYN from outside, b - TCP state-bypass or nailed, C - CTIOBE media,  
 D - DNS, d - dump, E - outside back connection, F - outside FIN, f - inside FIN,  
 G - group, g - MGCP, H - H.323, h - H.225.0, I - inbound data,  
 i - incomplete, J - GTP, j - GTP data, K - GTP IS-response  
 k - Skinny media, M - SMTP data, m - SIP media, n - GUP  
 O - outbound data, P - inside back connection, p - Phone-proxy TFTP connection,  
 q - SQL\*Net data, R - outside acknowledged FIN,  
 R - UDP SUNRPC, r - inside acknowledged FIN, S - awaiting inside SYN,  
 s - awaiting outside SYN, T - SIP, t - SIP transient, U - up,  
 V - VPN orphan, W - WAAS,  
 X - inspected by service module

### QUESTION 3

A Cisco ASA requires an additional feature license to enable which feature?

- A. transparent firewall
- B. cut-thru proxy
- C. threat detection
- D. botnet traffic filtering
- E. TCP normalizer



Correct Answer: D

[http://www.cisco.com/en/US/docs/security/asa/asa83/license\\_standalone/license\\_management/license.html#wp1450282](http://www.cisco.com/en/US/docs/security/asa/asa83/license_standalone/license_management/license.html#wp1450282)

#### QUESTION 4

When enabling a Cisco ASA to send syslog messages to a syslog server, which syslog level will produce the most messages?

- A. notifications
- B. informational
- C. alerts
- D. emergencies
- E. errors
- F. debugging

Correct Answer: F

#### QUESTION 5

Refer to the exhibit.



-Context C:

```
static (inside,shared) 10.30.10.0 10.30.10.0 netmask 255.255.255.0
```

Which two CLI commands result from this configuration? (Choose two.)



- A. aaa authorization network LOCAL
- B. aaa authorization network default authentication-server LOCAL
- C. aaa authorization command LOCAL
- D. aaa authorization exec LOCAL
- E. aaa authorization exec authentication-server LOCAL
- F. aaa authorization exec authentication-server

Correct Answer: CD

[http://www.cisco.com/en/US/docs/security/asa/asa84/configuration/guide/access\\_management.html#wp1145888](http://www.cisco.com/en/US/docs/security/asa/asa84/configuration/guide/access_management.html#wp1145888)

[Latest 642-618 Dumps](#)

[642-618 Exam Questions](#)

[642-618 Braindumps](#)





To Read the [Whole Q&As](#), please purchase the [Complete Version](#) from [Our website](#).

## Try our product !

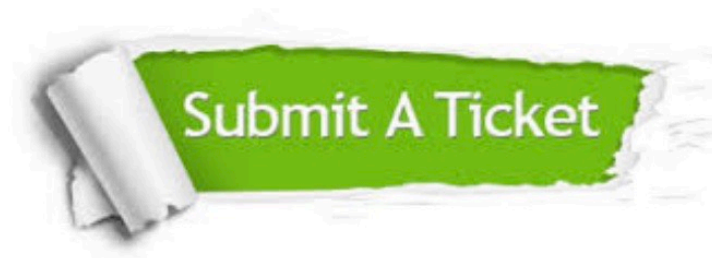
- 100% Guaranteed Success
- 100% Money Back Guarantee
- 365 Days Free Update
- Instant Download After Purchase
- 24x7 Customer Support
- Average 99.9% Success Rate
- More than 800,000 Satisfied Customers Worldwide
- Multi-Platform capabilities - [Windows](#), [Mac](#), [Android](#), [iPhone](#), [iPod](#), [iPad](#), [Kindle](#)

We provide exam PDF and VCE of Cisco, Microsoft, IBM, CompTIA, Oracle and other IT Certifications. You can view Vendor list of All Certification Exams offered:

<https://www.geekcert.com/allproducts>

## Need Help

Please provide as much detail as possible so we can best assist you.  
To update a previously submitted ticket:



 <b>One Year Free Update</b> <p>Free update is available within One Year after your purchase. After One Year, you will get 50% discounts for updating. And we are proud to boast a 24/7 efficient Customer Support system via Email.</p>	 <b>Money Back Guarantee</b> <p>To ensure that you are spending on quality products, we provide 100% money back guarantee for 30 days from the date of purchase.</p>	 <b>Security &amp; Privacy</b> <p>We respect customer privacy. We use McAfee's security service to provide you with utmost security for your personal information &amp; peace of mind.</p>
---	---	--

Any charges made through this site will appear as Global Simulators Limited.  
All trademarks are the property of their respective owners.  
Copyright © geekcert, All Rights Reserved.