



642-648^{Q&As}

Deploying Cisco ASA VPN Solutions (VPN v2.0)

Pass Cisco 642-648 Exam with 100% Guarantee

Free Download Real Questions & Answers **PDF** and **VCE** file from:

<https://www.geekcert.com/642-648.html>

100% Passing Guarantee
100% Money Back Assurance

Following Questions and Answers are all new published by Cisco
Official Exam Center

-  **Instant Download** After Purchase
-  **100% Money Back** Guarantee
-  **365 Days** Free Update
-  **800,000+** Satisfied Customers





QUESTION 1

Refer to following Exhibit and answer the following question below:

Instructions

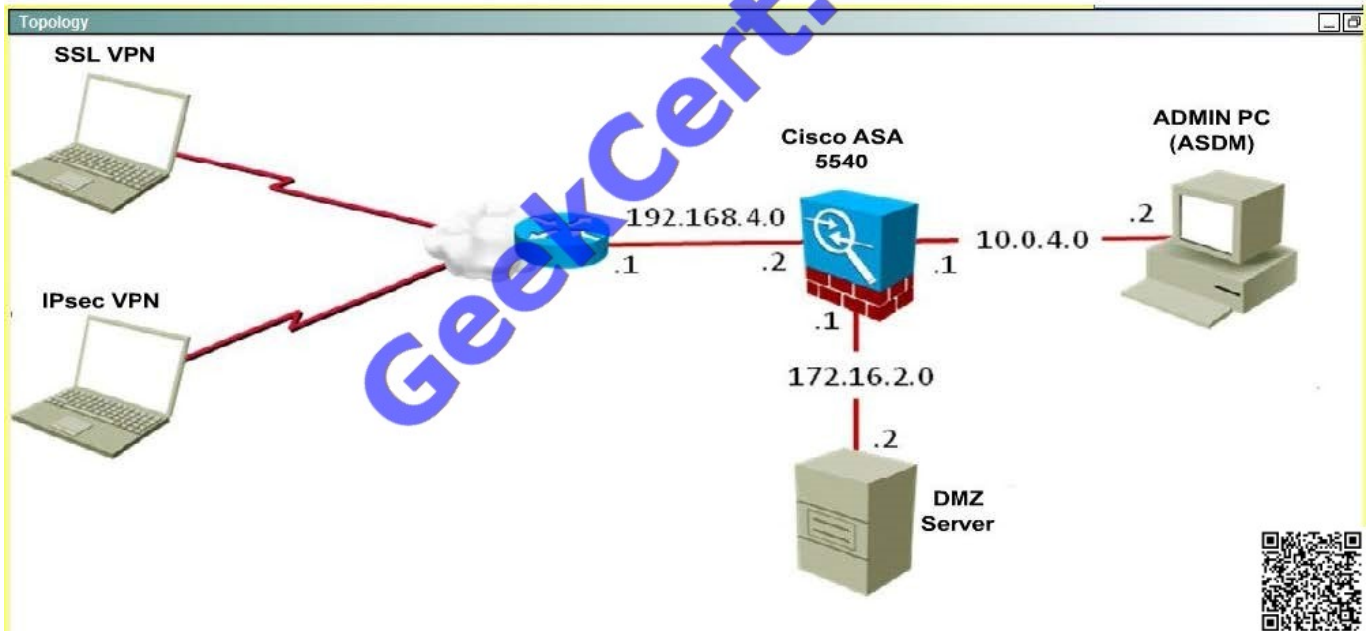
Click the grey buttons at the bottom of this frame to view the different windows.

Windows can be minimized and repositioned. You can also reposition a window by dragging it by the title bar.

The "Tab" key and most commands that use the **Control** or **Escape** keys are not supported and are not needed to complete this simulation.

Scenario

You are the firewall administrator for a small company. The company currently supports remote-access SSL VPN and IPsec VPN via a Cisco ASA 5520. This morning, your manager supplied you with a list of Cisco ASA configuration questions. Using the Cisco ASA ASDM, your job is to navigate the preconfigured Cisco ASDM to find the answers to the questions.





The screenshot shows the ASDM configuration page for AnyConnect Connection Profiles. The left sidebar shows the configuration tree with 'Remote Access VPN' > 'Network (Client) Access' > 'AnyConnect Connection Profiles' selected. The main content area is titled 'Configuration > Remote Access VPN > Network (Client) Access > AnyConnect Connection Profiles'. It contains the following sections:

- Access Interfaces:** A checkbox 'Enable Cisco AnyConnect VPN Client access on the interfaces selected in the table below' is checked. Below it, a table lists interfaces and their access settings.
- Login Page Setting:** A checkbox 'Allow user to select connection profile, identified by its alias, on the login page. Otherwise, DefaultWebVPNGroup will be the connection profile.' is checked. A checkbox 'Shutdown portal login page.' is unchecked.
- Connection Profiles:** A section for managing connection profiles with 'Add', 'Edit', and 'Delete' buttons. Below it is a table listing existing profiles.

Interface	SSL Access		IPsec (IKEv2) Access	
	Allow Access	Enable DTLS	Allow Access	Enable Client Services
outside	<input checked="" type="checkbox"/>	<input checked="" type="checkbox"/>	<input type="checkbox"/>	<input checked="" type="checkbox"/>
DMZ	<input type="checkbox"/>	<input type="checkbox"/>	<input type="checkbox"/>	<input type="checkbox"/>
inside	<input type="checkbox"/>	<input type="checkbox"/>	<input type="checkbox"/>	<input type="checkbox"/>

Name	SSL Enabled	IPsec Enabled	Aliases	Authentication Method
DefaultRAGroup	<input checked="" type="checkbox"/>	<input type="checkbox"/>		AAA(LOCAL)
DefaultWEBVPNGroup	<input checked="" type="checkbox"/>	<input type="checkbox"/>		AAA(LOCAL)
employee	<input checked="" type="checkbox"/>	<input type="checkbox"/>	employee	AAA(LOCAL)

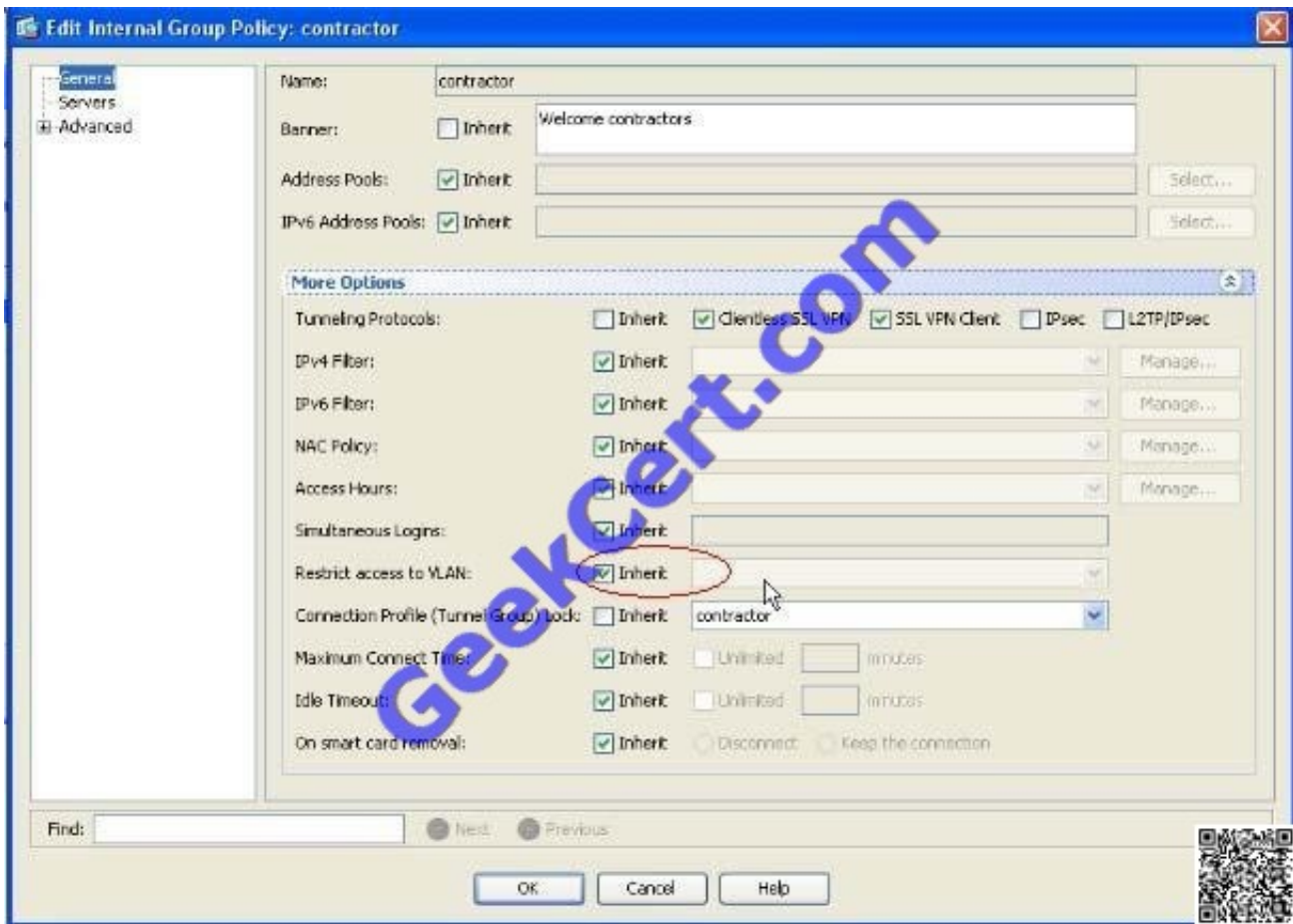
Which group policy restricts the VPN user access to VLAN 100?

- A. Employee
- B. Contractor
- C. Management
- D. Engineering

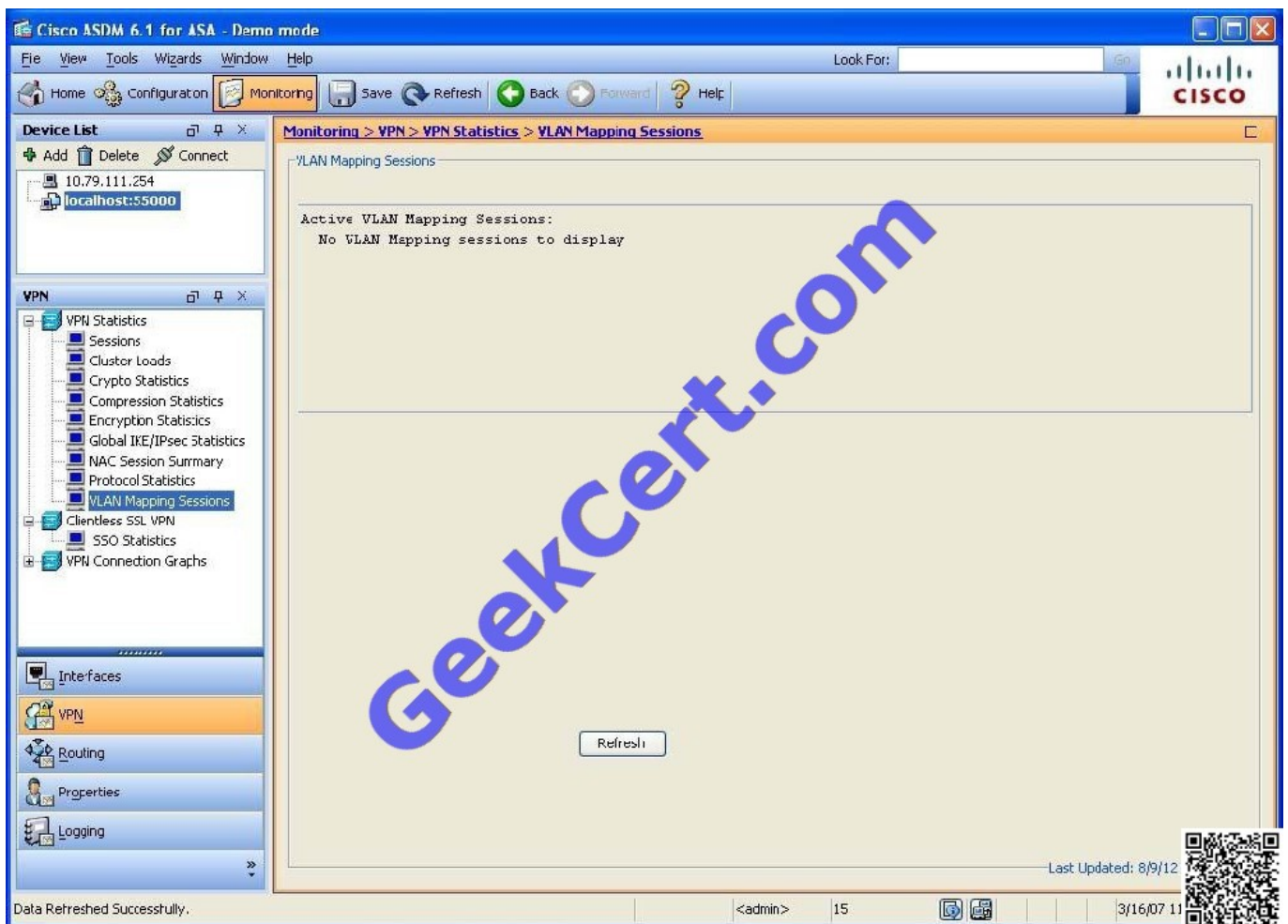
Correct Answer: B

Explanation:

configuration > network client access > any connect connection profiles > connection profiles > edit



For each profile > general > more options > restricted VLAN Monitoring > VPN > VPN statistics Sessions, vlan mapping sessions



QUESTION 2

Cisco AnyConnect profiles can be used to set which three options? (Choose three.)

- A. Define a list of VPN gateways that are presented to users upon login.
- B. Define a quarantine VLAN for remote devices that fail a host scan.
- C. Define a guest VLAN to all "noncompany" Cisco IOS WebVPN users.
- D. Define a list of backup servers if primary gateways are unavailable.
- E. Activate the SSL VPN tunnel as part of the Windows login sequence.
- F. Configure the Cisco Secure Desktop vault.

Correct Answer: ADE

http://www.cisco.com/en/US/docs/security/vpn_client/anyconnect/anyconnect20/administrative/guide/adminapa.pdf

QUESTION 3



After adding a remote-access IPsec tunnel via the VPN wizard, an administrator needs to tune the IKE policy parameters. Where is the correct place to tune IKE policy parameters?

- A. Cisco IPsec VPN SW Client > Client Profile
- B. IPsec User Profile
- C. Group Policy
- D. IKE Policy
- E. Crypto Map

Correct Answer: D

QUESTION 4

Select and Place:

Match the characteristic on the left with the correct transport layer protocol on the right.

used to tunnel traffic over TCP 443	TLS
replaced underlying transport layer with UDP 443	
enabled by default	
requires retransmission of lost packets	DTLS
used to transmit datagrams	
Used to negotiate control messages	

Correct Answer:



Match the characteristic on the left with the correct transport layer protocol on the right.

<input type="text"/>	TLS
<input type="text"/>	used to tunnel traffic over TCP 443
<input type="text"/>	requires retransmission of lost packets
<input type="text"/>	Used to negotiate control messages
<input type="text"/>	DTLS
<input type="text"/>	replaced underlying transport layer with UDP 443
<input type="text"/>	enabled by default
<input type="text"/>	used to transmit datagrams

QUESTION 5

When configuring dead peer detection for remote-access VPN, what does the confidence level parameter represent?

- A. It specifies the number of seconds the adaptive security appliance should allow a peer to idle before beginning keepalive monitoring.
- B. It specifies the number of seconds to wait between IKE keepalive retries.
- C. The higher the number, the more reliable the link is.
- D. It is determined dynamically based on reliability, uptime, and load.

Correct Answer: A



```
Chicago(config)# crypto map outside_map 10 set connection-type originate-only
```

ISAKMP Keepalives

The ISAKMP keepalives feature is a way to determine whether the remote **VPN peer** is still reachable or there are any lingering SAs (SAs that do not get cleared properly). By default, **Cisco ASA** starts sending **Dead Peer Detection (DPD)** packets after it stops receiving encrypted traffic over the tunnel from the **peer**. If it does not hear from its **peer** for 10 seconds (**confidence interval**), it sends out a **DPD R_U_THERE** packet. It keeps sending the **R_U_THERE** packets every 2 seconds (the **retry interval**). If it does not receive **R_U_THERE_ACK** for four consecutive **DPDs** polling periods, the security appliance deletes the corresponding ISAKMP and IPsec SAs.



[642-648 VCE Dumps](#)

[642-648 Practice Test](#)

[642-648 Study Guide](#)



To Read the [Whole Q&As](#), please purchase the [Complete Version](#) from [Our website](#).

Try our product !

- 100% Guaranteed Success
- 100% Money Back Guarantee
- 365 Days Free Update
- Instant Download After Purchase
- 24x7 Customer Support
- Average 99.9% Success Rate
- More than 800,000 Satisfied Customers Worldwide
- Multi-Platform capabilities - [Windows](#), [Mac](#), [Android](#), [iPhone](#), [iPod](#), [iPad](#), [Kindle](#)

We provide exam PDF and VCE of Cisco, Microsoft, IBM, CompTIA, Oracle and other IT Certifications. You can view Vendor list of All Certification Exams offered:

<https://www.geekcert.com/allproducts>

Need Help

Please provide as much detail as possible so we can best assist you.
To update a previously submitted ticket:



 <p>One Year Free Update Free update is available within One Year after your purchase. After One Year, you will get 50% discounts for updating. And we are proud to boast a 24/7 efficient Customer Support system via Email.</p>	 <p>Money Back Guarantee To ensure that you are spending on quality products, we provide 100% money back guarantee for 30 days from the date of purchase.</p>	 <p>Security & Privacy We respect customer privacy. We use McAfee's security service to provide you with utmost security for your personal information & peace of mind.</p>
---	---	--

Any charges made through this site will appear as Global Simulators Limited.
All trademarks are the property of their respective owners.
Copyright © geekcert, All Rights Reserved.