



# 642-648<sup>Q&As</sup>

Deploying Cisco ASA VPN Solutions (VPN v2.0)

## Pass Cisco 642-648 Exam with 100% Guarantee

Free Download Real Questions & Answers **PDF** and **VCE** file from:

<https://www.geekcert.com/642-648.html>

100% Passing Guarantee  
100% Money Back Assurance

Following Questions and Answers are all new published by Cisco  
Official Exam Center

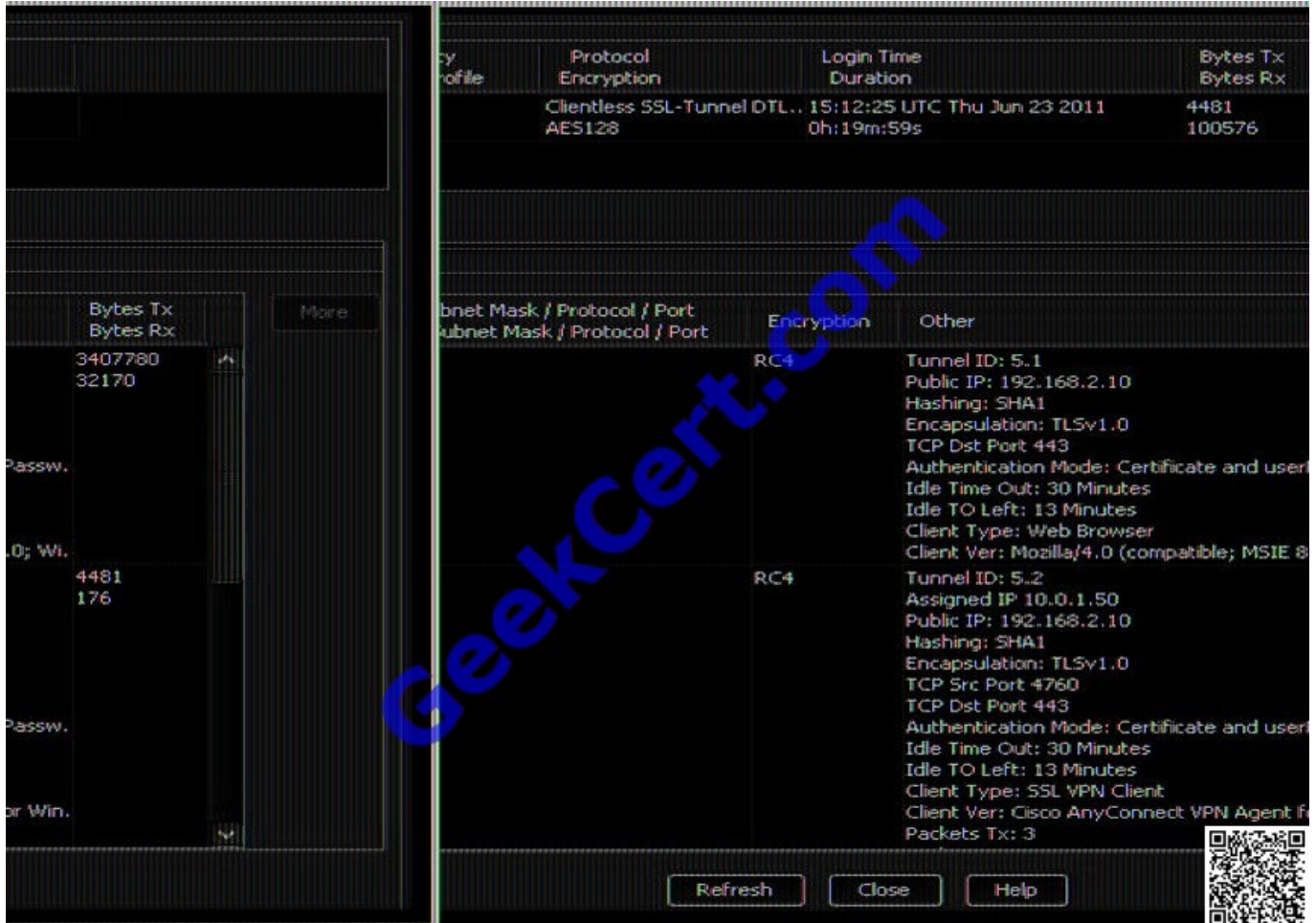
-  **Instant Download** After Purchase
-  **100% Money Back** Guarantee
-  **365 Days** Free Update
-  **800,000+** Satisfied Customers





**QUESTION 1**

Refer to the exhibit.



When you are testing SSL VPN in a non-production environment, certain variables in the Cisco ASDM session details can be viewed or changed under Configuration > AnyConnect Connection Profiles.

Which parameter can be viewed or changed in the AnyConnect Connection Profiles?

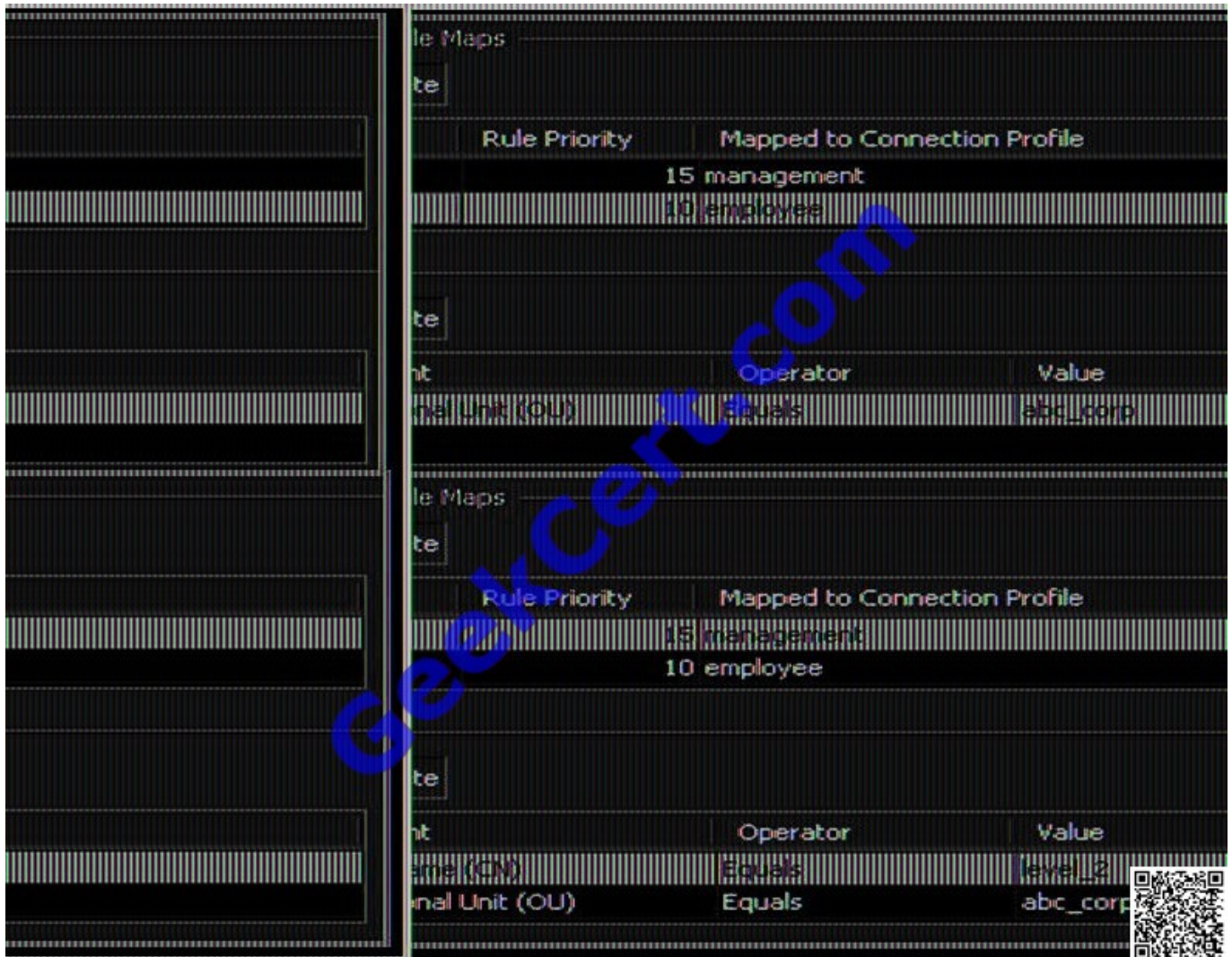
- A. Assigned IP address 10.0.1.50
- B. Client Type. SSL VPN Client
- C. Authentication Mode. Certificate and User Password
- D. Client Ver: Cisco AnyConnect VPN Agent for Windows

Correct Answer: C

**QUESTION 2**



Refer to the exhibit.



You have configured two SSL VPN Certificate to Connection Profile Maps for all employee and management users. The Connection Profiles for the management users are not being applied when the "management" users connect.

Based on the configuration that is shown, what is the most likely cause of this issue?

- A. The rule priority of the employee mapping is not low enough, and it needs to be lowered to 1.
- B. The priority of the employee mapping is too low, and it needs to be increased, but not higher than the rule priority of the management mapping.
- C. The priority of the management mapping is too high, and it needs to be lower than the rule priority of the employee mapping.
- D. The matching criteria for the management mapping is too specific, and the CN matching parameter should be removed.

Correct Answer: C

ASDM user guide p[age 35 52 Use the Add/Edit Certificate Matching Rule dialog box to assign the name of a list (map) to a connection profile. Fields ?Map--Choose one of the following: - Existing--Select the name of the map to include the



rule. New--Enter a new map name for a rule. ?Rule Priority--Type a decimal to specify the sequence with which the security appliance evaluates the map when it receives a connection request. For the first rule defined, the default priority is 10. The security appliance evaluates each connection against the map with the lowest priority number first. ?Mapped to Connection Profile--Select the connection profile, formerly called a "tunnel group," to map to this rule. If you do not assign a rule criterion to the map, as described in the next section, the security appliance ignores the map entry.



### QUESTION 3

Match the characteristic on the left with the correct IKE Mode on the right.

Select and Place:

Match the characteristic on the left with the correct IKE Mode on the right.

IPsec Session Keys	IKE Main Mode
Supports dynamically addressed peers using PSK	
D-H Group 2-Default	
IPsec SA	IKE Aggressive Mode
D-H Group 1-Default	
Protects Peer Identity	IKE Quick Mode

Correct Answer:



Match the characteristic on the left with the correct IKE Mode on the right.

	IKE Main Mode
	Protects Peer Identity
	D-H Group 1-Default
	IKE Aggressive Mode
	Supports dynamically addressed peers using PSK
	D-H Group 2-Default
	IKE Quick Mode
	IPsec Session Keys
	IPsec SA

#### QUESTION 4

Which three statements are Cisco AnyConnect VPN Client deployment options? (Choose three.)

- A. Configure the Cisco AnyConnect profile to automatically launch client or clientless SSL VPN upon discovering a trusted network.
- B. Automatically download the Cisco AnyConnect VPN Client upon Cisco IOS WebVPN login.
- C. Prompt user upon Cisco IOS WebVPN login to select client or clientless SSL VPN within X seconds.
- D. Configure the Cisco AnyConnect profile to automatically disconnect the client or clientless SSL VPN tunnel upon discovering an untrusted network.
- E. User manually launches client from SSL VPN clientless portal.

Correct Answer: BCE

[http://www.cisco.com/en/US/docs/security/vpn\\_client/anyconnect/anyconnect24/administration/guide/ac\\_01intro.html](http://www.cisco.com/en/US/docs/security/vpn_client/anyconnect/anyconnect24/administration/guide/ac_01intro.html)

#### QUESTION 5

Two temporary workers are given clientless SSL VPN access to the corporate network. To restrict their access to the network, match the Cisco ASDM attribute on the left to the restrictive action on the right.

Select and Place:



Two temporary workers are given clientless SSL VPN access to the corporate network. To restrict their access to the network, match the Cisco ASDM attribute on the left to the restrictive action on the right.

Web ACL	Restrict prelogin policy.
Extended ACL	Restrict postlogin policy.
Group Policy	Restrict ability to browse.
Connection Profile	Restrict access to a specific site.
Disable URL entry	
Web Portal Network Access Navigation Pane	

Correct Answer:

Two temporary workers are given clientless SSL VPN access to the corporate network. To restrict their access to the network, match the Cisco ASDM attribute on the left to the restrictive action on the right.

	Connection Profile
Extended ACL	Group Policy
	Disable URL entry
	Web ACL
Web Portal Network Access Navigation Pane	



To Read the [Whole Q&As](#), please purchase the [Complete Version](#) from [Our website](#).

## Try our product !

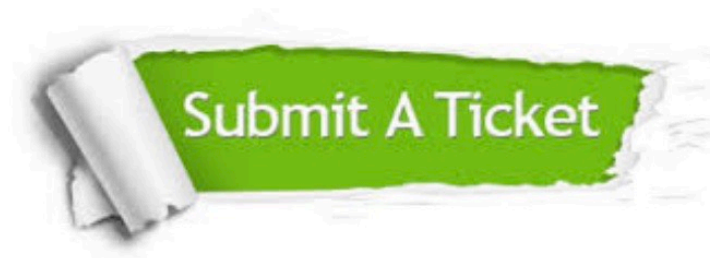
- 100% Guaranteed Success
- 100% Money Back Guarantee
- 365 Days Free Update
- Instant Download After Purchase
- 24x7 Customer Support
- Average 99.9% Success Rate
- More than 800,000 Satisfied Customers Worldwide
- Multi-Platform capabilities - [Windows](#), [Mac](#), [Android](#), [iPhone](#), [iPod](#), [iPad](#), [Kindle](#)

We provide exam PDF and VCE of Cisco, Microsoft, IBM, CompTIA, Oracle and other IT Certifications. You can view Vendor list of All Certification Exams offered:

<https://www.geekcert.com/allproducts>

## Need Help

Please provide as much detail as possible so we can best assist you.  
To update a previously submitted ticket:



 <p><b>One Year Free Update</b> Free update is available within One Year after your purchase. After One Year, you will get 50% discounts for updating. And we are proud to boast a 24/7 efficient Customer Support system via Email.</p>	 <p><b>Money Back Guarantee</b> To ensure that you are spending on quality products, we provide 100% money back guarantee for 30 days from the date of purchase.</p>	 <p><b>Security &amp; Privacy</b> We respect customer privacy. We use McAfee's security service to provide you with utmost security for your personal information &amp; peace of mind.</p>
---	---	--

Any charges made through this site will appear as Global Simulators Limited.  
All trademarks are the property of their respective owners.  
Copyright © geekcert, All Rights Reserved.