



# 70-210<sup>Q&As</sup>

Installing, Configuring and Administering Microsoft Windows 2000 Professional

**Pass Microsoft 70-210 Exam with 100% Guarantee**

Free Download Real Questions & Answers **PDF** and **VCE** file from:

<https://www.geekcert.com/70-210.html>

100% Passing Guarantee  
100% Money Back Assurance

Following Questions and Answers are all new published by Microsoft Official Exam Center

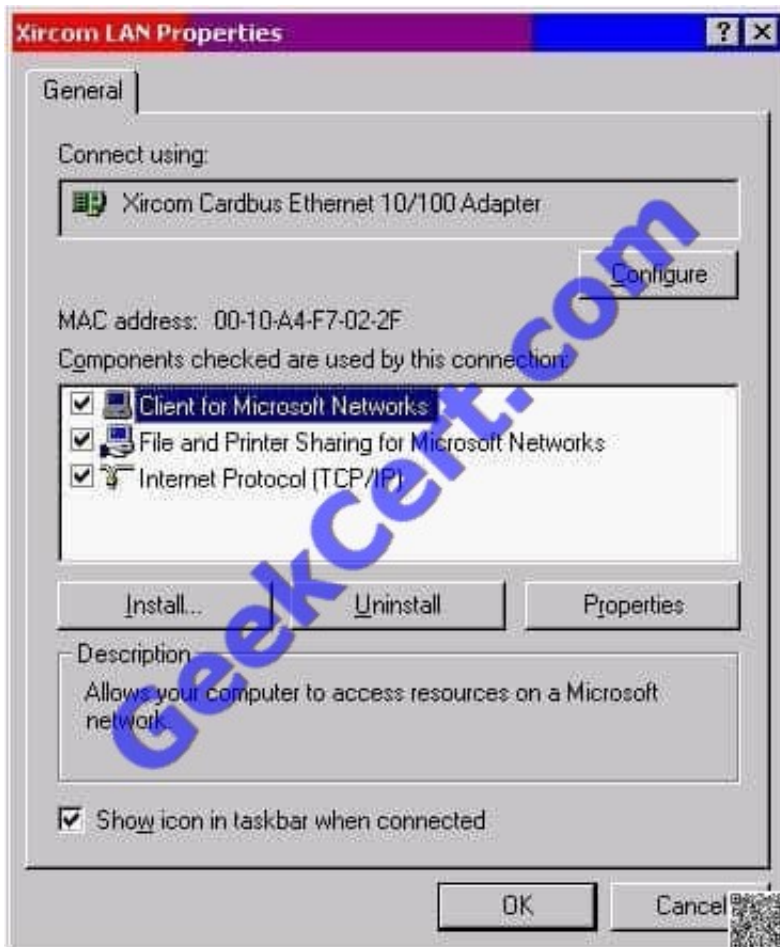
-  **Instant Download** After Purchase
-  **100% Money Back** Guarantee
-  **365 Days** Free Update
-  **800,000+** Satisfied Customers





### QUESTION 1

You are the administrator of your company's network. You use your Windows 2000 Professional computer to transfer 20 large files. Each file is 100 MB in size. You want to copy the files from a UNIX server in your branch office to a computer running Microsoft SQL Server at the main office. When you copy the files by using Windows Explorer, the connection appears to time out and the file copy is aborted. You suspect that you are encountering a TCP/IP performance problem. Your network connection is shown in the Xircom LAN Properties dialog box in the exhibit. (Click the Exhibit button.) You want to monitor the performance of TCP/IP of your computer. What should you do?



- A. Install the Network Monitor Agent. Use the Performance console to view all the counters of the TCP object.
- B. Install the Network Monitor Agent. Use the Performance console to view the Fragmented Datagrams/ sec counter.
- C. Install SNMP. Use the Performance console to view all the counters of the TCP object.
- D. Install Simple TCP/IP Services. Use the Performance console to view the Fragmentation Failures counter.

Correct Answer: C

### QUESTION 2

You install a SCSI adapter and a SCSI tape drive on your Windows 2000 Professional computer. You start the



computer. Windows 2000 Professional detects and installs drivers for the new SCSI devices. Later the same day, you restart your computer. During the startup process, the computer stops loading Windows 2000 Professional. You then restart the computer and it stops again. You want to enable your Windows 2000 Professional computer to start successfully. What should you do?

- A. Start the computer in safe mode. Enable driver signing.
- B. Start the computer in safe mode. Use Device Manager to remove the SCSI tape device.
- C. Start the computer by using the Recovery Console. Repair the Master Boot Record by using the fixmbr command.
- D. Start the computer by using the Recovery Console. Disable the SCSI adapter device driver by using the disable command.

Correct Answer: D

---

### QUESTION 3

You are the administrator of your company's network. A user named Lilly prints dozens of documents daily from her Windows 2000 Professional computer. Lilly reports that she receives a dialog box announcing that each print job she sends has printed successfully. Lilly's default printer is a shared printer that is connected to a Windows 2000 Server computer. She wants to have this notification turned off because she prints so many documents. What should you do?

- A. In the server properties of the Printers system folder, clear the Notify when remote documents are printed option.
- B. In the server properties of the Printers system folder, clear the Notify computer, not user, when remote documents are printed option.
- C. In the default printer properties, select the Ports tab, and clear the Enable bidirectional support option.
- D. In the default printer properties, select the Advanced tab, and clear the Advanced printing features option.

Correct Answer: A

---

### QUESTION 4

You upgrade all client computers in your network to Windows 2000 Professional. Then you apply the Basicwk.inf security template to the computers. Now, none of the users can run the company's database application. What should you do?

- A. Apply the Compatws.inf security template to the computers.
- B. Delete the Basicwk.inf security template file from the computers.
- C. Use the System Policy Editor to configure a new security policy for the database application.
- D. For each user account, allow Read permission to the database application and its associated files.

Correct Answer: A

---

### QUESTION 5



You are the administrator of a Windows 2000 domain. You deploy a graphics software application to users in the Graphics organizational unit (OU). You want to create a custom installation for three users named Carlos, Carmen, and Maria, who are members of the Graphics OU. You want these three users to be able to access additional text, filters, and other graphics options for the software. What should you do?

- A. Create the Graphic Users OU in the domain. Add a custom .msi file to the Graphics OU.
- B. Create the Graphic Users OU in the domain. Add a custom .mst file to the Graphics OU.
- C. Create the Advanced Software OU within the Graphics OU, and add Carlos, Carmen, and Maria. Create an .msi file, including changes, and apply the modifications to the Advanced Software OU.
- D. Create the Advanced Software OU within the Graphics OU, and add Carlos, Carmen, and Maria. Create an .mst file, including changes, and apply the modifications to the Advanced Software OU.

Correct Answer: D

[70-210 Practice Test](#)

[70-210 Study Guide](#)

[70-210 Exam Questions](#)



To Read the [Whole Q&As](#), please purchase the [Complete Version](#) from [Our website](#).

## Try our product !

- 100% Guaranteed Success
- 100% Money Back Guarantee
- 365 Days Free Update
- Instant Download After Purchase
- 24x7 Customer Support
- Average 99.9% Success Rate
- More than 800,000 Satisfied Customers Worldwide
- Multi-Platform capabilities - [Windows](#), [Mac](#), [Android](#), [iPhone](#), [iPod](#), [iPad](#), [Kindle](#)

We provide exam PDF and VCE of Cisco, Microsoft, IBM, CompTIA, Oracle and other IT Certifications. You can view Vendor list of All Certification Exams offered:

<https://www.geekcert.com/allproducts>

## Need Help

Please provide as much detail as possible so we can best assist you.  
To update a previously submitted ticket:



 <p><b>One Year Free Update</b> Free update is available within One Year after your purchase. After One Year, you will get 50% discounts for updating. And we are proud to boast a 24/7 efficient Customer Support system via Email.</p>	 <p><b>Money Back Guarantee</b> To ensure that you are spending on quality products, we provide 100% money back guarantee for 30 days from the date of purchase.</p>	 <p><b>Security &amp; Privacy</b> We respect customer privacy. We use McAfee's security service to provide you with utmost security for your personal information &amp; peace of mind.</p>
---	---	--

Any charges made through this site will appear as Global Simulators Limited.  
All trademarks are the property of their respective owners.  
Copyright © geekcert, All Rights Reserved.