



70-210^{Q&As}

Installing, Configuring and Administering Microsoft Windows 2000 Professional





Pass Microsoft 70-210 Exam with 100% Guarantee

Free Download Real Questions & Answers **PDF** and **VCE** file from:

<https://www.geekcert.com/70-210.html>

100% Passing Guarantee
100% Money Back Assurance

Following Questions and Answers are all new published by Microsoft Official Exam Center

-  **Instant Download** After Purchase
-  **100% Money Back** Guarantee
-  **365 Days** Free Update
-  **800,000+** Satisfied Customers





QUESTION 1

You are the administrator of the Coho Vineyard network. The network consists of 10 Windows 2000 Advanced Server computers and 250 Windows 2000 Professional computers. Your company has two domains: cohovineyard.com and westcoastsales.com. The company's intranet site is on a Windows 2000 Advanced Server computer named ServerA. ServerA is in the cohovineyard.com domain and is running Internet Information Services (IIS) and Microsoft Proxy Server 2.0. You want to configure the Windows 2000 Professional computers in the westcoastsales.com domain to access the intranet site. You want users to be able to connect to the intranet site by using the URL http://ServerA rather than its fully qualified domain name. What should you do?

- A. Add cohovineyard.com to the Domain Suffix Search Order on the computers.
- B. Add westcoastsales.com to the Domain Suffix Search Order on the computers.
- C. Add westcoastsales.com to the exceptions list in the proxy server settings on the computers.
- D. Configure the proxy server settings on the computers to bypass the proxy server for intranet addresses.

Correct Answer: A

QUESTION 2

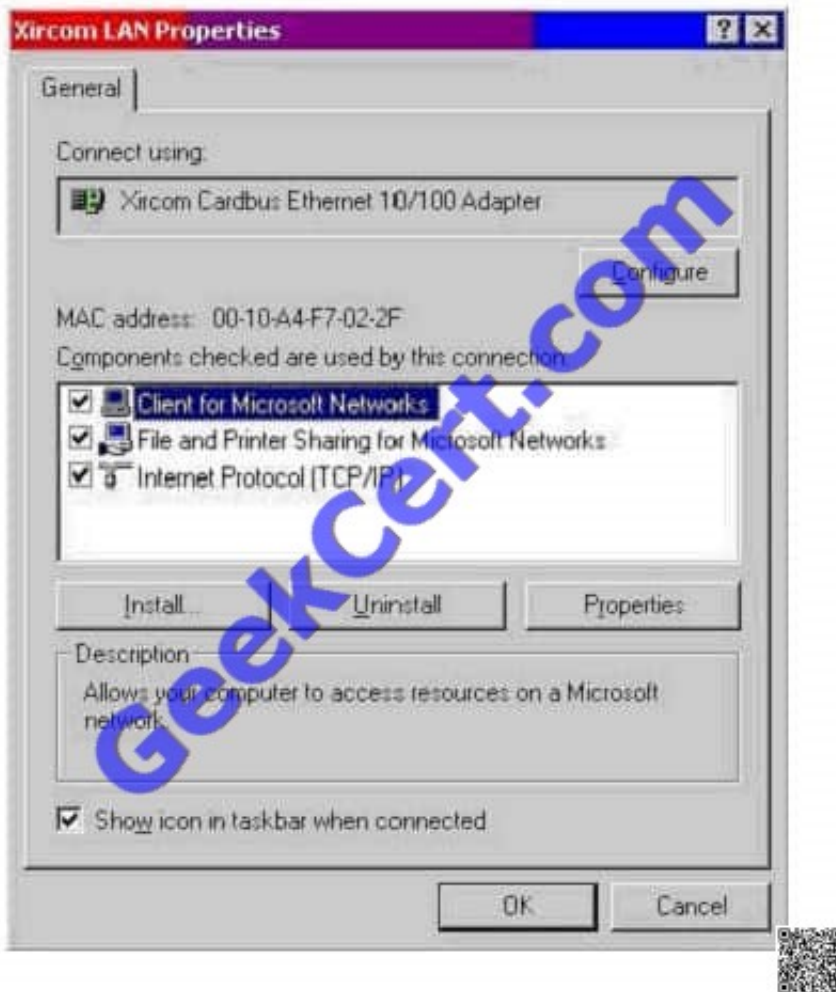
You want to connect to your company network from your Windows 2000 Professional computer at home. You have an ISDN line that is used for Internet connectivity. You create a VPN connection and are able to connect successfully to the company network. While connected to the company network, you are unable to access the Internet. What must you do so that you can access the Internet?

- A. Configure the ISDN connection to use SLIP instead of PPP.
- B. Select the Enable Internet Connection Sharing for this connection check box in the ISDN connection properties.
- C. Clear the Use default gateway on remote network check box.
- D. Install and configure the SAP Agent service.

Correct Answer: C

QUESTION 3

You are the administrator of your company's network. You use your Windows 2000 Professional computer to transfer 20 large files. Each file is 100 MB in size. You want to copy the files from a UNIX server in your branch office to a computer running Microsoft SQL Server at the main office. When you copy the files by using Windows Explorer, the connection appears to time out and the file copy is aborted. You suspect that you are encountering a TCP/IP performance problem. Your network connection is shown in the Xircom LAN Properties dialog box in the exhibit. (Click the Exhibit button.) You want to monitor the performance of TCP/IP of your computer. What should you do?



- A. Install the Network Monitor Agent. Use the Performance console to view all the counters of the TCP object.
- B. Install the Network Monitor Agent. Use the Performance console to view the Fragmented Datagrams/ sec counter.
- C. Install SNMP. Use the Performance console to view all the counters of the TCP object.
- D. Install Simple TCP/IP Services. Use the Performance console to view the Fragmentation Failures counter.

Correct Answer: C

QUESTION 4

You are the administrator of a Windows 2000 network. You purchase 25 new portable computers that have a preinstalled version of Windows 98. You upgrade the 25 new computers to Windows 2000 Professional. You want to remove the Logoff option from the Start menu on the 25 new computers. Which two methods can you use to accomplish your goal? (Choose two.)

- A. On the Advanced tab of the Taskbar and Start Menu dialog box, clear the Display Logoff option.
- B. On the Advanced tab of the Taskbar and Start Menu dialog box, clear the Administrative Tools option.



C. On the General tab of the Taskbar and Start Menu dialog box, clear the Personalized Menus option. Log off and then log on to the computers.

D. Use a Local Computer Policy that will not include the Logoff option on the Start menu.

E. Use the User Profiles tab within the properties of My Computer to change the profile from a local profile to a roaming user profile.

Correct Answer: AD

QUESTION 5

Your company upgrades its network to 100 Mbps. You remove the old network adapter and install a new 10/100 Mbps network adapter into a Windows 2000 Professional computer. You configure the TCP/IP protocol settings to be the same as they were for the previously installed network adapter. When you restart the computer, however, you cannot access the network. You try to ping your network adapter's TCP/IP address locally. You receive the following error message: "Request timed out." Next, you try to ping 127.0.0.1 and receive the same error message. What must you do?

A. Configure a different TCP/IP address.

B. Enable DHCP in the TCP/IP properties.

C. Enable DNS in the TCP/IP properties.

D. Configure the network adapter to run at 100 Mbps only.

E. Replace the network adapter.

Correct Answer: E

[Latest 70-210 Dumps](#)

[70-210 PDF Dumps](#)

[70-210 Practice Test](#)



To Read the [Whole Q&As](#), please purchase the [Complete Version](#) from [Our website](#).

Try our product !

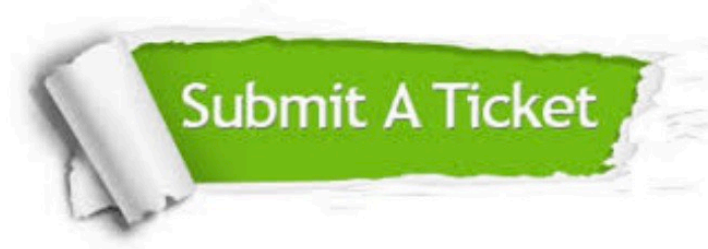
100% Guaranteed Success
100% Money Back Guarantee
365 Days Free Update
Instant Download After Purchase
24x7 Customer Support
Average 99.9% Success Rate
More than 800,000 Satisfied Customers Worldwide
Multi-Platform capabilities - [Windows](#), [Mac](#), [Android](#), [iPhone](#), [iPod](#), [iPad](#), [Kindle](#)

We provide exam PDF and VCE of Cisco, Microsoft, IBM, CompTIA, Oracle and other IT Certifications.
You can view Vendor list of All Certification Exams offered:

<https://www.geekcert.com/allproducts>

Need Help

Please provide as much detail as possible so we can best assist you.
To update a previously submitted ticket:



 <p>One Year Free Update Free update is available within One Year after your purchase. After One Year, you will get 50% discounts for updating. And we are proud to boast a 24/7 efficient Customer Support system via Email.</p>	 <p>Money Back Guarantee To ensure that you are spending on quality products, we provide 100% money back guarantee for 30 days from the date of purchase.</p>	 <p>Security & Privacy We respect customer privacy. We use McAfee's security service to provide you with utmost security for your personal information & peace of mind.</p>
---	---	--

Any charges made through this site will appear as Global Simulators Limited.
All trademarks are the property of their respective owners.
Copyright © geekcert, All Rights Reserved.