



# 70-247<sup>Q&As</sup>

Configuring and Deploying a Private Cloud

## Pass Microsoft 70-247 Exam with 100% Guarantee

Free Download Real Questions & Answers **PDF** and **VCE** file from:

<https://www.geekcert.com/70-247.html>

100% Passing Guarantee  
100% Money Back Assurance

Following Questions and Answers are all new published by Microsoft  
Official Exam Center

-  **Instant Download** After Purchase
-  **100% Money Back** Guarantee
-  **365 Days** Free Update
-  **800,000+** Satisfied Customers





### QUESTION 1

Your company uses System Center 2012 R2 Operations Manager.

A technician manually installs the Microsoft Monitoring Agent on a server named Server1.

You discover that the agent is configured to use the wrong primary management server.

You need to change the primary management server used by Server1.

What should you do on Server1?

- A. From the properties of the Microsoft Monitoring Agent, edit the management group and restart Microsoft Monitoring Agent service.
- B. From Notepad, edit Monitoringhost.exe.config and restart the Microsoft Monitoring Agent service.
- C. From the properties of the Microsoft Management Agent, remove the management group and add a new management group.
- D. From File Explorer, run momagent.msi and select Repair.

Correct Answer: D

---

### QUESTION 2

Your network contains an Active Directory domain named contoso.com. The domain contains a domain controller named DC1 that runs Windows Server 2008 R2 Service Pack 1 (SP1). The forest functional level is Windows Server 2003.

The domain contains two member servers named Server1 and Server2. Server1 has Microsoft SQL Server 2008 installed. Both servers run Windows Server 2008 R2 SP1.

Your company plans to deploy System Center 2012 R2 Service Manager to Server2.

You need to ensure that you can install Service Manager on Server2.

What should you do?

- A. Upgrade the operating system on Server1.
- B. Raise the forest functional level.
- C. Upgrade the operating system on DC1.
- D. Upgrade SQL Server on Server1.
- E. Upgrade the operating system on Server2.

Correct Answer: D

---



### QUESTION 3

Your network contains a System Center 2012 Virtual Machine Manager (VMM) infrastructure.

The infrastructure contains 50 Hyper-V hosts.

You plan to deploy Power Optimization for VMM.

You need to prepare the infrastructure for the planned deployment.

What should you do? (Each correct answer presents part of the solution. Choose two.)

- A. Install a Baseboard Management Controller (BMC) on each Hyper-V host.
- B. Enable Dynamic Optimization.
- C. Enable Hibernation.
- D. Enable Performance and Resource Optimization (PRO).
- E. Install a configuration provider on each Hyper-V host.

Correct Answer: AB

---

### QUESTION 4

You need to configure the Hyper-V hosts to meet the cloud requirements. From which node should you perform the configuration? (To answer, select the appropriate node in the answer area.)

Hot Area:



server7.contoso.com Properties

General properties

Identity

Computer name: server7  
Domain: contoso.com  
Location: Trusted Domain  
SMBIOS ID:  
Description:

System information

Processor: Intel 2.80 GHz 2 logical processors  
Memory: 7.93 GB total, 5.81 GB available  
Storage: 642.76 GB capacity, 543.03 GB available  
Operating system: Microsoft Windows Server 2008 R2 Enterprise Service Pack 1  
Virtualization software: Microsoft Hyper-V  
VMM agent: Version 3.0.6005.0  
Last update: 1/24/2013 11:26 AM

Placement and remote setting

This host is available for placement  
Remote connection port: 2179

View Script OK Cancel

Hot Area:



server7.contoso.com Properties

General properties

Identity

Computer name: server7  
Domain: contoso.com  
Location: Trusted Domain  
SMBIOS ID:  
Description:

System information

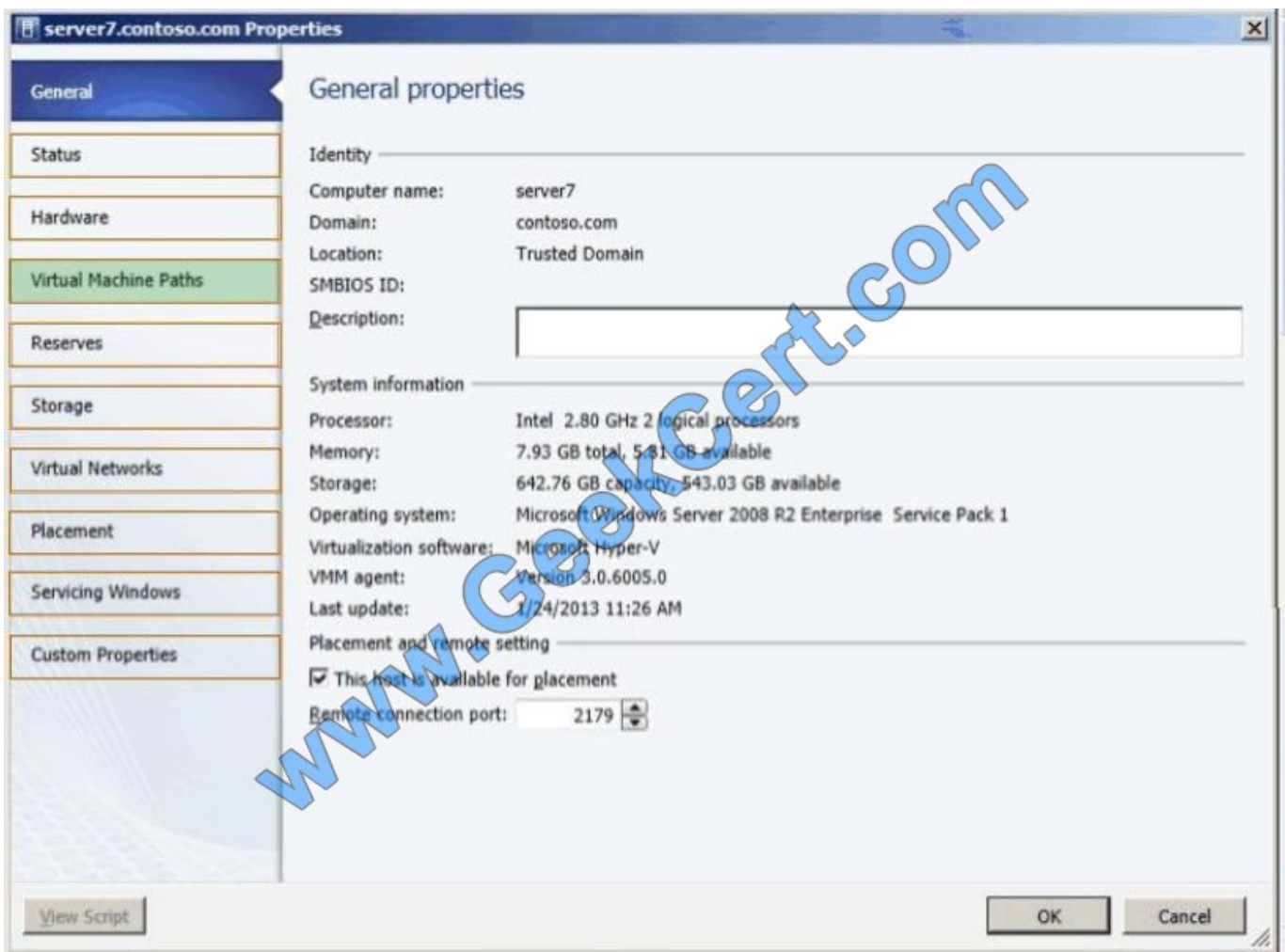
Processor: Intel 2.80 GHz 2 logical processors  
Memory: 7.93 GB total, 5.81 GB available  
Storage: 642.76 GB capacity, 543.03 GB available  
Operating system: Microsoft Windows Server 2008 R2 Enterprise Service Pack 1  
Virtualization software: Microsoft Hyper-V  
VMM agent: Version 3.0.6005.0  
Last update: 1/24/2013 11:26 AM

Placement and remote setting

This host is available for placement  
Remote connection port: 2179

View Script OK Cancel

Correct Answer:



"Uses SAN copy to provision the virtual machines" "Stores all virtual machines on the SAN only"

<http://technet.microsoft.com/en-us/library/gg610643.aspx>

"Under Locations, click Virtual Machine Location. In the results pane, under the Virtual machine path box, click Browse. In the Select Destination Folder dialog box, click the drive that you created from the assigned logical unit, and then click OK."

## QUESTION 5

You need to recommend a solution to meet the requirements for App2.

What should you recommend? (To answer, drag the appropriate actions to the correct components. Each action may be used once, more than once, or not at all.)

You may need to drag the split bar between panes or scroll to view content.)

Select and Place:



| Actions  | Answer Area                |
|--|----------------------------|
| Create a service template for App2.                                | App Controller: Action     |
| Connect to a Windows Azure subscription.                           | Operations Manager: Action |
| Initialize the Windows Azure diagnostic monitor.                   | Windows Azure: Action      |
| Install the System Center Global Service Monitor Management Packs. |                            |

Correct Answer:

| Actions                             | Answer Area  |
|-------------------------------------|--|
| Create a service template for App2. | App Controller: Connect to a Windows Azure subscription.                               |
|                                     | Operations Manager: Install the System Center Global Service Monitor Management Packs. |
|                                     | Windows Azure: Initialize the Windows Azure diagnostic monitor.                        |
|                                     |  |

[70-247 VCE Dumps](#)

[70-247 Practice Test](#)

[70-247 Exam Questions](#)



To Read the [Whole Q&As](#), please purchase the [Complete Version](#) from [Our website](#).

## Try our product !

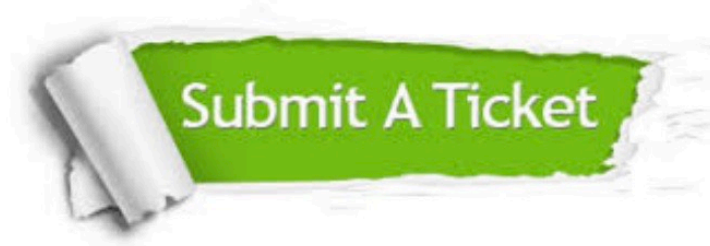
- 100% Guaranteed Success
- 100% Money Back Guarantee
- 365 Days Free Update
- Instant Download After Purchase
- 24x7 Customer Support
- Average 99.9% Success Rate
- More than 800,000 Satisfied Customers Worldwide
- Multi-Platform capabilities - [Windows](#), [Mac](#), [Android](#), [iPhone](#), [iPod](#), [iPad](#), [Kindle](#)

We provide exam PDF and VCE of Cisco, Microsoft, IBM, CompTIA, Oracle and other IT Certifications. You can view Vendor list of All Certification Exams offered:

<https://www.geekcert.com/allproducts>

## Need Help

Please provide as much detail as possible so we can best assist you.  
To update a previously submitted ticket:



|   |   |  |
|---|---|--|
|  <p><b>One Year Free Update</b><br/>Free update is available within One Year after your purchase. After One Year, you will get 50% discounts for updating. And we are proud to boast a 24/7 efficient Customer Support system via Email.</p> |  <p><b>Money Back Guarantee</b><br/>To ensure that you are spending on quality products, we provide 100% money back guarantee for 30 days from the date of purchase.</p> |  <p><b>Security &amp; Privacy</b><br/>We respect customer privacy. We use McAfee's security service to provide you with utmost security for your personal information &amp; peace of mind.</p> |
|---|---|--|

Any charges made through this site will appear as Global Simulators Limited.  
All trademarks are the property of their respective owners.  
Copyright © geekcert, All Rights Reserved.