



70-247^{Q&As}

Configuring and Deploying a Private Cloud

Pass Microsoft 70-247 Exam with 100% Guarantee

Free Download Real Questions & Answers **PDF** and **VCE** file from:

<https://www.geekcert.com/70-247.html>

100% Passing Guarantee
100% Money Back Assurance

Following Questions and Answers are all new published by Microsoft
Official Exam Center

-  **Instant Download** After Purchase
-  **100% Money Back** Guarantee
-  **365 Days** Free Update
-  **800,000+** Satisfied Customers

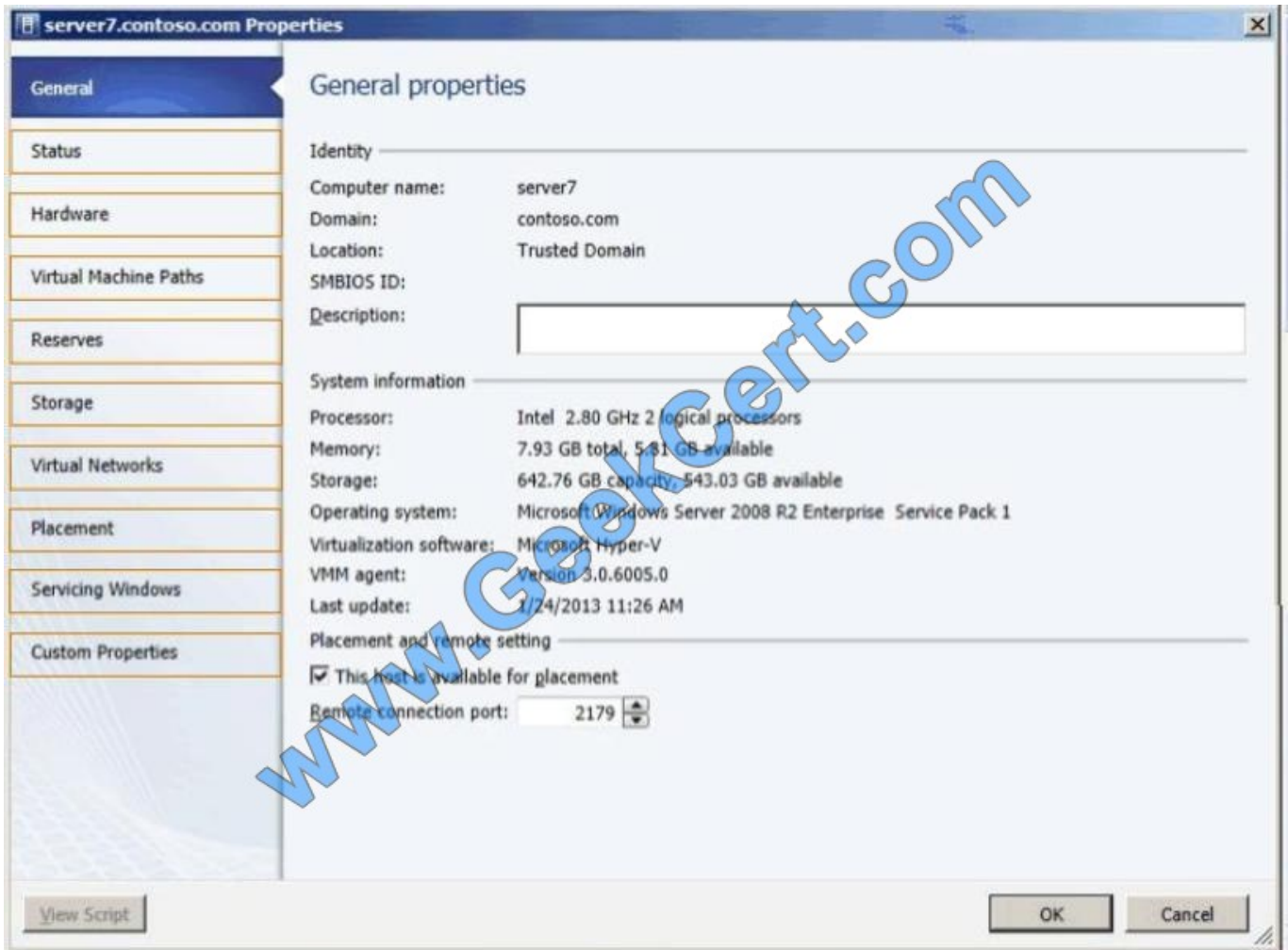




QUESTION 1

You need to configure the Hyper-V hosts to meet the cloud requirements. From which node should you perform the configuration? (To answer, select the appropriate node in the answer area.)

Hot Area:



Hot Area:



server7.contoso.com Properties

General properties

Identity

Computer name: server7
Domain: contoso.com
Location: Trusted Domain
SMBIOS ID:
Description:

System information

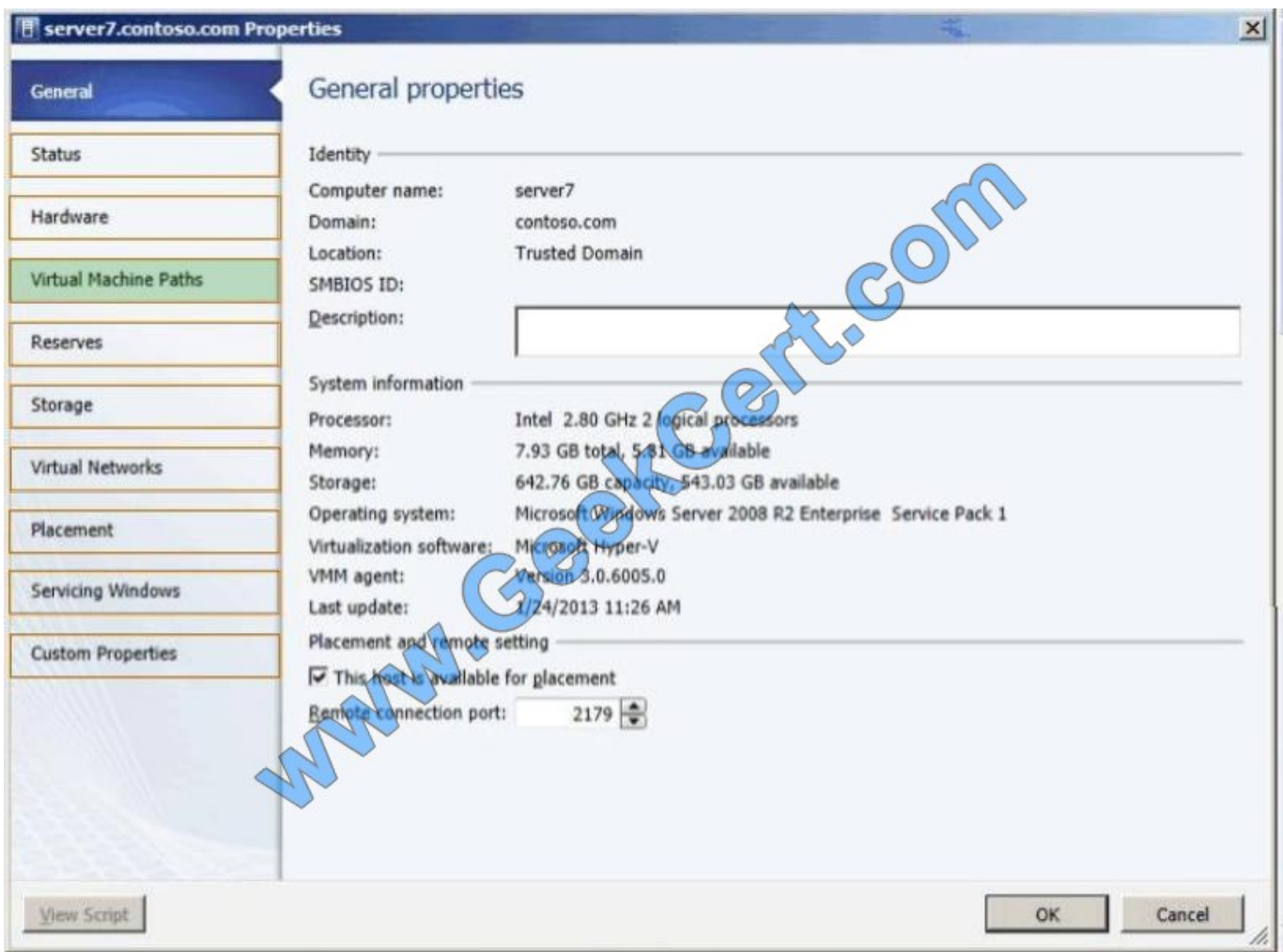
Processor: Intel 2.80 GHz 2 logical processors
Memory: 7.93 GB total, 5.81 GB available
Storage: 642.76 GB capacity, 543.03 GB available
Operating system: Microsoft Windows Server 2008 R2 Enterprise Service Pack 1
Virtualization software: Microsoft Hyper-V
VMM agent: Version 3.0.6005.0
Last update: 1/24/2013 11:26 AM

Placement and remote setting

This host is available for placement
Remote connection port: 2179

View Script OK Cancel

Correct Answer:



"Uses SAN copy to provision the virtual machines" "Stores all virtual machines on the SAN only"

<http://technet.microsoft.com/en-us/library/gg610643.aspx>

"Under Locations, click Virtual Machine Location. In the results pane, under the Virtual machine path box, click Browse. In the Select Destination Folder dialog box, click the drive that you created from the assigned logical unit, and then click OK."

QUESTION 2

Your company has a private cloud that is managed by a System Center Service Manager 2010 Service Pack 1 (SP1) infrastructure. The infrastructure contains four servers as shown in the following table.

Server name	Server role
MGT1	Management server
DATA1	Data warehouse management server
SSRS1	Microsoft SQL Server Reporting Services
SQL1	Microsoft SQL Server



You upgrade MGT1 and DATA1 to Service Manager 2012.

You need to ensure that DATA1 can continue to deploy reports to SSRS1.

Which two tasks should you perform? (Each correct answer presents part of the solution. Choose two.)

- A. Copy the Microsoft.EnterpriseManagement.Reporting.Code.dll file to SSRS1.
- B. Modify the RSReportServer.config file on MGT1.
- C. Modify the RSReportServer.config file on SSRS1.
- D. Modify the RSSrvPolicy.config file on DATA1.
- E. Modify the RSSrvPolicy.config file on SQL1.
- F. Copy the Microsoft.EnterpriseManagement.Reporting.Code.dll file to SQL1.

Correct Answer: AC

QUESTION 3

You need to recommend the configuration settings for the SQL Server instance that will host the App Controller database. The solution must support the planned changes. What should you include in the recommendation?

- A. Change the database collation.
- B. Enable case sensitivity.
- C. Disable full-text search.
- D. Install the SQL Server Reporting Services (SSRS).

Correct Answer: A

To support Simplified Chinese change MS SQL Collation [http://msdn.microsoft.com/en-us/library/ms144250\(v=sql.105\).aspx](http://msdn.microsoft.com/en-us/library/ms144250(v=sql.105).aspx)

QUESTION 4

Your network contains a domain named contoso.com. The domain contains five virtualization servers. The servers are configured as shown in the following table.



Server name	Server role
Server1	Windows Server 2008 Service Pack 2 (SP2) Hyper-V server role
Server2	Microsoft Hyper-V Server 2008 R2
Server3	Microsoft Virtual Server 2005 R2
Server4	VMware ESX Server 2.5
Server5	VMware ESX Server 3.5

The network also contains a server named Server6 that runs VMware vCenter Server.

In the domain, you install System Center 2012 Virtual Machine Manager (VMM) on a server named Server7. You configure Server7 to manage Server7.

You need to ensure that you can add all of the servers to the VMM fabric.

Which two actions should you perform? (Each correct answer presents part of the solution.

Choose two.)

- A. Upgrade Server1 to Hyper-V Server 2008 R2 Service Pack 1 (SP1).
- B. Upgrade Server2 to Hyper-V Server 2008 R2 Service Pack 1 (SP1).
- C. Install Hyper-V Server 2008 R2 Service Pack 1 (SP1) on Server3.
- D. Install Hyper-V Server 2008 R2 Service Pack 1 (SP1) on Server4.
- E. Install Hyper-V Server 2008 R2 Service Pack 1 (SP1) on Server5.

Correct Answer: CD

QUESTION 5

You need to recommend which type of profile should be assigned to the Sales private cloud. What should you recommend?

- A. Physical Computer
- B. Capability
- C. Hardware
- D. Guest OS

Correct Answer: C

Each virtual machine created in the Sales private cloud must be limited to four virtual CPUs and eight GB of memory.



VCE & PDF

GeekCert.com

<https://www.geekcert.com/70-247.html>

2021 Latest geekcert 70-247 PDF and VCE dumps Download

[70-247 PDF Dumps](#)

[70-247 Study Guide](#)

[70-247 Exam Questions](#)



To Read the [Whole Q&As](#), please purchase the [Complete Version](#) from [Our website](#).

Try our product !

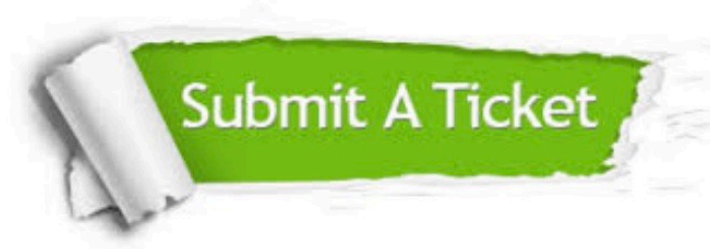
- 100% Guaranteed Success
- 100% Money Back Guarantee
- 365 Days Free Update
- Instant Download After Purchase
- 24x7 Customer Support
- Average 99.9% Success Rate
- More than 800,000 Satisfied Customers Worldwide
- Multi-Platform capabilities - [Windows](#), [Mac](#), [Android](#), [iPhone](#), [iPod](#), [iPad](#), [Kindle](#)

We provide exam PDF and VCE of Cisco, Microsoft, IBM, CompTIA, Oracle and other IT Certifications. You can view Vendor list of All Certification Exams offered:

<https://www.geekcert.com/allproducts>

Need Help

Please provide as much detail as possible so we can best assist you.
To update a previously submitted ticket:



 One Year Free Update <p>Free update is available within One Year after your purchase. After One Year, you will get 50% discounts for updating. And we are proud to boast a 24/7 efficient Customer Support system via Email.</p>	 Money Back Guarantee <p>To ensure that you are spending on quality products, we provide 100% money back guarantee for 30 days from the date of purchase.</p>	 Security & Privacy <p>We respect customer privacy. We use McAfee's security service to provide you with utmost security for your personal information & peace of mind.</p>
---	---	--

Any charges made through this site will appear as Global Simulators Limited.
All trademarks are the property of their respective owners.
Copyright © geekcert, All Rights Reserved.