



# 70-384<sup>Q&As</sup>

Recertification for MCSE: Communication

## Pass Microsoft 70-384 Exam with 100% Guarantee

Free Download Real Questions & Answers **PDF** and **VCE** file from:

<https://www.geekcert.com/70-384.html>

100% Passing Guarantee  
100% Money Back Assurance

Following Questions and Answers are all new published by Microsoft  
Official Exam Center

-  **Instant Download** After Purchase
-  **100% Money Back** Guarantee
-  **365 Days** Free Update
-  **800,000+** Satisfied Customers





**QUESTION 1**

You have a Lync Server 2013 infrastructure. The infrastructure contains four Standard Edition Front End Servers and an Edge Server. You run `Get-CsManagementStoreReplicationStatus | ft ReplicaFQDN, UpToDate` and you receive the following output:

ReplicaFqdn	UpToDate
edge01.contoso.com	False
lyncfe01.contoso.com	False
lyncfe02.contoso.com	False
lyncfe03.contoso.com	False
lyncfe04.contoso.com	False

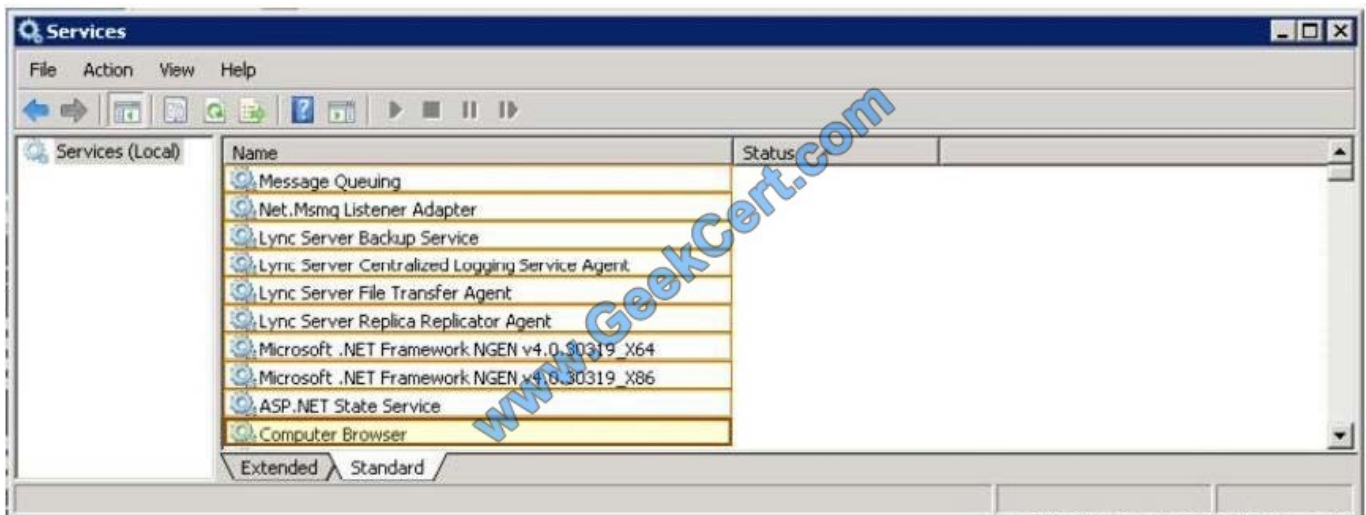
On the server responsible for the replication of the Central Management store, you discover that several services have stopped.

You need to enable the replication of the Central Management store.

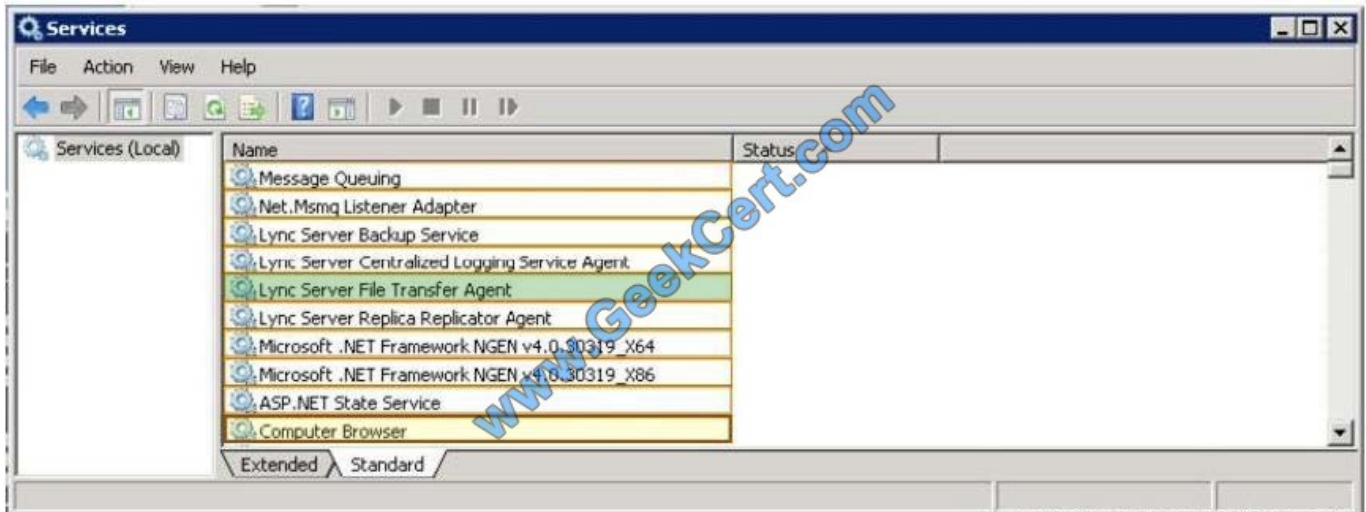
Which service should you start? (To answer, select the appropriate service in the answer area.)

**HOTSPOT**

Hot Area:



Correct Answer:



## QUESTION 2

You need to ensure that the Lync Server 2013 infrastructure meets the security requirement for conferences.

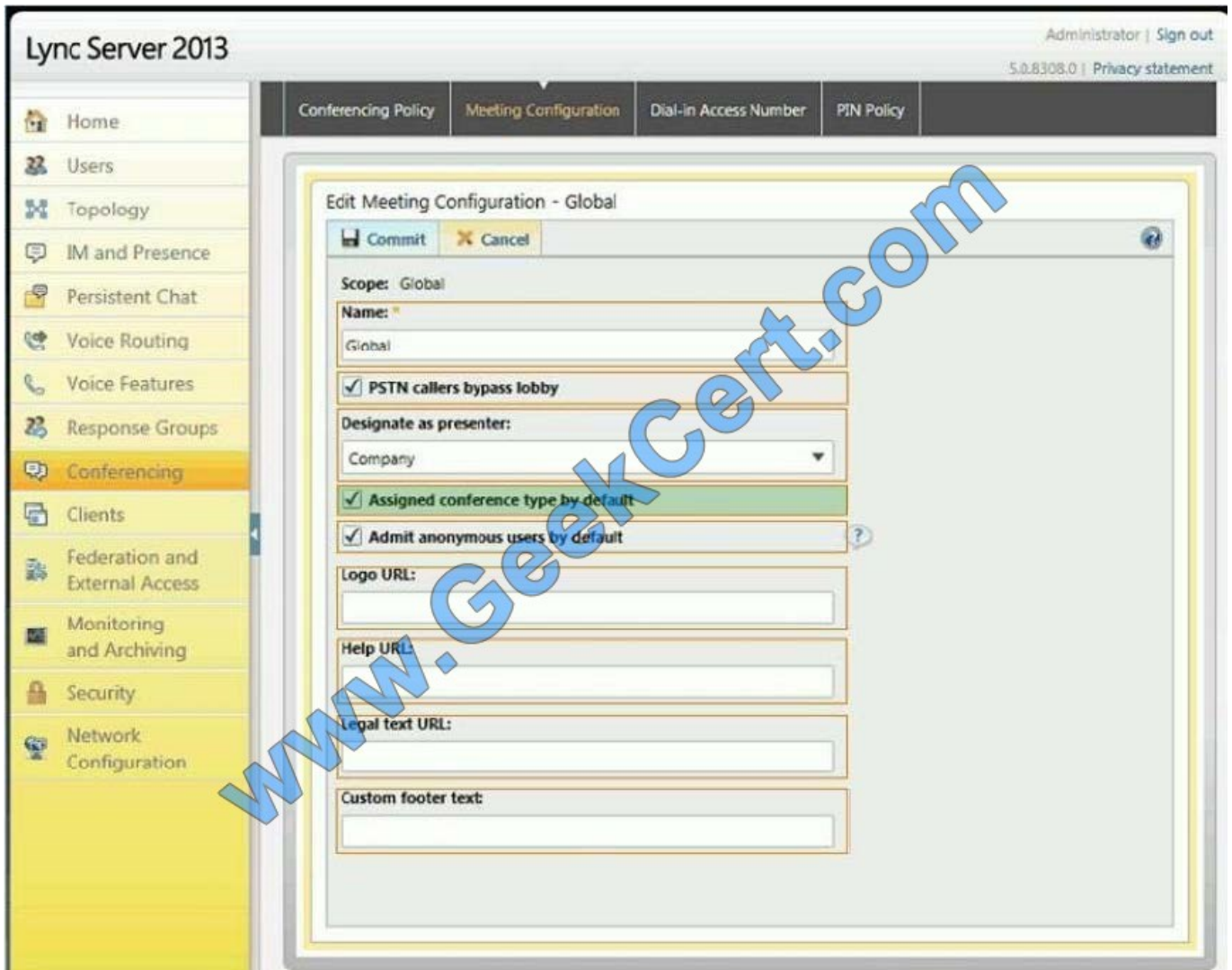
Which setting should you modify in Meeting Configuration? (To answer, select the appropriate setting in the answer area.)

HOTSPOT Hot Area:



The screenshot shows the Lync Server 2013 administration console. The left-hand navigation pane includes options like Home, Users, Topology, IM and Presence, Persistent Chat, Voice Routing, Voice Features, Response Groups, Conferencing (highlighted), Clients, Federation and External Access, Monitoring and Archiving, Security, and Network Configuration. The main area is titled 'Edit Meeting Configuration - Global' and contains several settings: 'Scope: Global', 'Name: \*' (set to Global), a checked checkbox for 'PSTN callers bypass lobby', a 'Designate as presenter:' dropdown menu (set to Company), checked checkboxes for 'Assigned conference type by default' and 'Admit anonymous users by default', and text input fields for 'Logo URL', 'Help URL', 'Legal text URL', and 'Custom footer text'. A large blue watermark 'www.GeekCert.com' is overlaid diagonally across the center of the interface.

Correct Answer:



### QUESTION 3

Your company has several offices. The offices are located in one office building. The building is located in Seattle. The company has employees from Europe and North America.

The company has a phone at a security desk.

You implement Lync Server 2013 Enterprise Voice.

You need to implement call routing for emergency calls. The solution must meet the following requirements:

If a user dials 112, the call must be routed to a phone extension of 0911.

If a user dials 0911, the call must be routed to the phone at the security desk.

The phone at the security desk must be used to forward calls to the emergency number in the Seattle offices only.

What should you use?





To answer, drag the appropriate technology to the correct requirement in the answer area.

Each technology may be used once, more than once, or not at all. Additionally, you may need to drag the split bar between panes or scroll to view content.

DRAG DROP

Select and Place:

Technologies	Answer Area
a conferencing policy	If a user dials 112, the call must be routed to a phone extension of 0911. <input type="text" value="Technology"/>
a Contact object	
Enterprise Voice-enabled users	If a user dials 0911, the call must be routed to the phone at the security desk. <input type="text" value="Technology"/>
an external user access Policy	
a normalization rule	
a voice policy	The phone at the security desk must be used to forward calls to the emergency number in the Seattle offices only. <input type="text" value="Technology"/>
An unassigned number	

Correct Answer:

Technologies	Answer Area
a conferencing policy	If a user dials 112, the call must be routed to a phone extension of 0911. <input type="text" value="a normalization rule"/>
a Contact object	
Enterprise Voice-enabled users	If a user dials 0911, the call must be routed to the phone at the security desk. <input type="text" value="a normalization rule"/>
an external user access Policy	
a normalization rule	
a voice policy	The phone at the security desk must be used to forward calls to the emergency number in the Seattle offices only. <input type="text" value="a voice policy"/>
An unassigned number	

**QUESTION 4**

You have a Lync Server 2013 infrastructure and a Microsoft Exchange Server 2013 organization.

Enterprise Voice and Unified Messaging (UM) are enabled for all users.

You plan to hire several new employees.

You need to configure a personal auto attendant for the new employees.



Which cmdlet should run?

- A. New-InboxRule
- B. New-UmAutoAttendant
- C. New-UMMailboxPolicy
- D. New-UMCallAnsweringRule

Correct Answer: B

### QUESTION 5

You have a Lync Server 2013 infrastructure that contains two servers. The servers are configured as shown in the following table.

Server name	Role
Server1	Front End Server
Server2	Microsoft SQL Server

You deploy two new servers. The servers are configured as shown in the following table.

Server name	Location
Server3	Internal network
Server4	Perimeter network

You need to recommend changes to the infrastructure to meet the following requirements:

Ensure that remote users can connect to the network by using Microsoft Lync 2013.

Ensure that Server3 authenticates the remote users before the users connect to a Front End Server.

Which Lync Server 2013 server role should you recommend deploying to each server?

To answer, drag the appropriate server role to the correct server in the answer area. Each server role may be used once, more than once, or not at all. Additionally, you may need to drag the split bar between panes or scroll to view content.

DRAG DROP

Select and Place:



Server Roles	Answer Area
Director	Server3 Sever role
Edge Server	
Front End Server	Server4 Sever role
Mediation Server	

Correct Answer:

Server Roles	Answer Area
	Server3 Director
Front End Server	Server4 Edge Server
Mediation Server	

[Latest 70-384 Dumps](#)

[70-384 VCE Dumps](#)

[70-384 Braindumps](#)





To Read the [Whole Q&As](#), please purchase the [Complete Version](#) from [Our website](#).

## Try our product !

- 100% Guaranteed Success
- 100% Money Back Guarantee
- 365 Days Free Update
- Instant Download After Purchase
- 24x7 Customer Support
- Average 99.9% Success Rate
- More than 800,000 Satisfied Customers Worldwide
- Multi-Platform capabilities - [Windows](#), [Mac](#), [Android](#), [iPhone](#), [iPod](#), [iPad](#), [Kindle](#)

We provide exam PDF and VCE of Cisco, Microsoft, IBM, CompTIA, Oracle and other IT Certifications. You can view Vendor list of All Certification Exams offered:

<https://www.geekcert.com/allproducts>

## Need Help

Please provide as much detail as possible so we can best assist you.  
To update a previously submitted ticket:



 <p><b>One Year Free Update</b> Free update is available within One Year after your purchase. After One Year, you will get 50% discounts for updating. And we are proud to boast a 24/7 efficient Customer Support system via Email.</p>	 <p><b>Money Back Guarantee</b> To ensure that you are spending on quality products, we provide 100% money back guarantee for 30 days from the date of purchase.</p>	 <p><b>Security &amp; Privacy</b> We respect customer privacy. We use McAfee's security service to provide you with utmost security for your personal information &amp; peace of mind.</p>
---	---	--

Any charges made through this site will appear as Global Simulators Limited.  
All trademarks are the property of their respective owners.  
Copyright © geekcert, All Rights Reserved.