



70-410^{Q&As}

Installing and Configuring Windows Server 2012

Pass Microsoft 70-410 Exam with 100% Guarantee

Free Download Real Questions & Answers **PDF** and **VCE** file from:

<https://www.geekcert.com/70-410.html>

100% Passing Guarantee
100% Money Back Assurance

Following Questions and Answers are all new published by Microsoft
Official Exam Center

-  **Instant Download** After Purchase
-  **100% Money Back** Guarantee
-  **365 Days** Free Update
-  **800,000+** Satisfied Customers





QUESTION 1

Your network contains an Active Directory domain named contoso.com. The domain contains a server named Server1. Server1 runs Windows Server 2012 R2 and has the Hyper-V server role installed. On Server1, you create and start a virtual machine named VM1. VM1 is configured as shown in the following table.

Setting	Configuration
Minimum RAM	2048 MB
Maximum RAM	4096 MB
Disk type	Fixed size
Disk size	100 GB

You need to recommend a solution to minimize the amount of disk space used for the checkpoint of VM1. What should you do before you create the checkpoint?

- A. Run the Resize-VHD cmdlet.
- B. Convert Disk1.vhd to a dynamically expanding disk.
- C. Shut down VM1.
- D. Run the Convert-VHD cmdlet.

Correct Answer: C

Changing between a fixed and dynamic disk type does not alter the size of a SNAPSHOT much at all.

However, since a snapshot is a record of a VMs state at the exact time that the snapshot was taken, shutting down the VM before taking the snapshot prevents the snapshot from having to contain all of the data in RAM (as there is no data in

memory when a machine is powered down).

The question states that the solution should minimize the amount of disk space used for the checkpoint of VM1. If the checkpoint is taken while VM1 is running, there will be two attritional files present at the checkpoint location; a .VSV with

VM1 saved state files and a .BIN file which contains VM1's memory contents. If, however, VM1 is shut down first, these files will not be created, thus saving disk space.

In order to convert Disk1.vhd to a dynamically expanding disk, VM1 still have to be shut down.

QUESTION 2

You have a server named Server1 that runs Windows Server 2012 R2. Server1 has the Hyper-V server role installed. Server1 is connected to two Fibre Channel SANs and is configured as shown in the following table.



Host bus adapter (HBA) name	Fibre Channel SAN name
HBA1	SAN1
HBA2	SAN2
HBA3	SAN1
HBA4	SAN2

You have a virtual machine named VM1.

You need to configure VM1 to connect to SAN1.

What should you do first?

- A. Add one HBA
- B. Create a Virtual Fibre Channel SAN.
- C. Create a Hyper-V virtual switch.
- D. Configure network adapter teaming.

Correct Answer: B

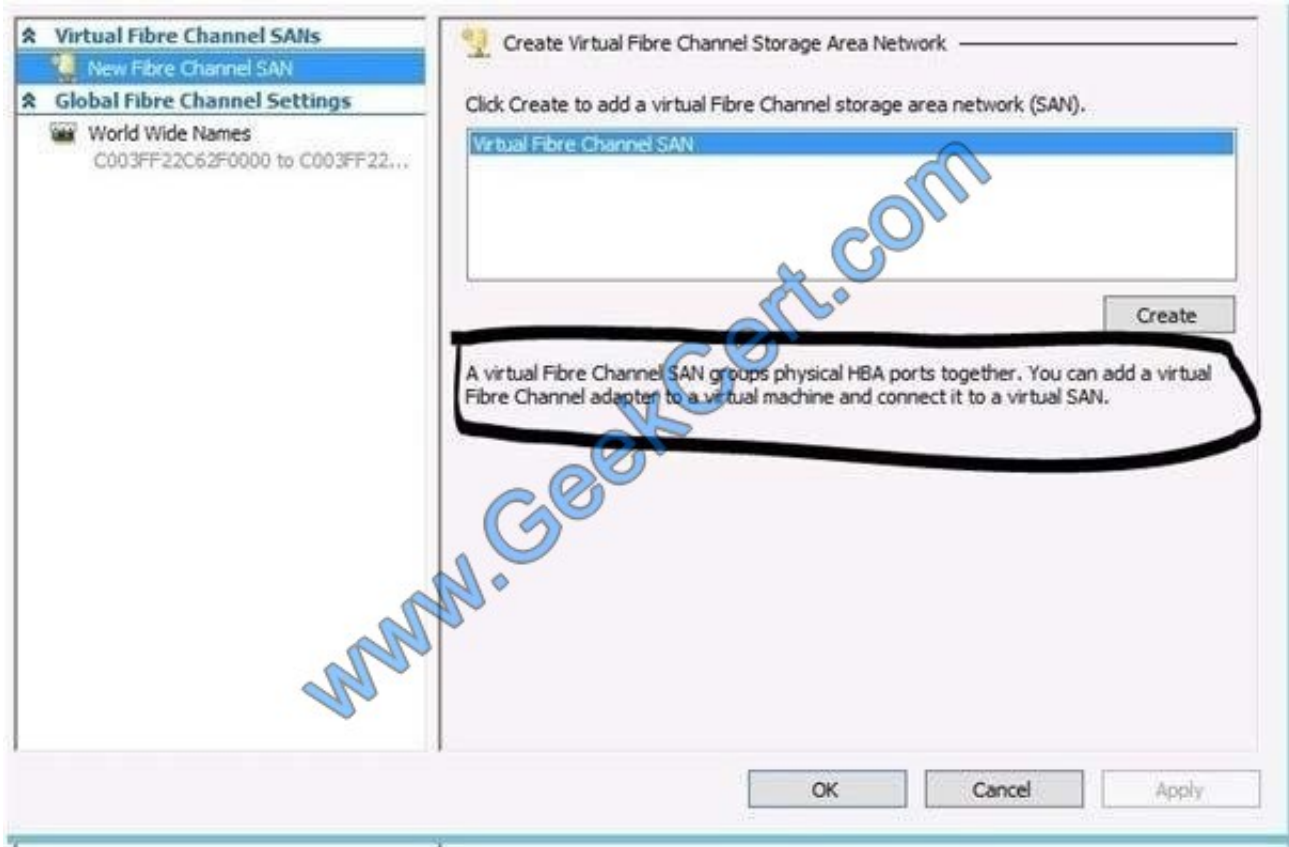
You need your virtualized workloads to connect easily and reliably to your existing storage arrays.

Windows Server 2012 provides Fibre Channel ports within the guest operating system, which allows you to connect to Fibre Channel directly from within virtual machines. This feature protects your investments in Fibre Channel, enables you

to virtualize workloads that use direct access to Fibre Channel storage, allows you to cluster guest operating systems over Fibre Channel, and provides an important new storage option for servers hosted in your virtualization infrastructure.

With this Hyper-V virtual Fibre Channel feature, you can connect to Fibre Channel storage from within a virtual machine. This allows you to use your existing Fibre Channel investments to support virtualized workloads. Support for Fibre

Channel in Hyper-V guests also includes support for many related features, such as virtual SANs, live migration, and MPIO.



QUESTION 3

Your network contains one Active Directory domain named contoso.com. All servers run Windows Server 2012 R2.

You have a server named Server1 that has the Work Folders role services installed.

Server1 hosts 20 Work Folders shares.

Your company's new security policy states that all corporate files stored on client computers must be encrypted.

You need to ensure that the corporate files stored on the client computers meet the requirement of the security policy.

What should you do from Server1?

- A. Run the Enable-BitlockerAutoUnlock cmdlet.
- B. Install the Enhanced Storage feature.
- C. Run the Set-SyncServerSetting cmdlet.
- D. Run the Set-SyncShare cmdlet.
- E. Run the Enable-SyncShare cmdlet.

Correct Answer: D

References: [https://technet.microsoft.com/library/dn296649\(v=wps.630\).aspx](https://technet.microsoft.com/library/dn296649(v=wps.630).aspx)



QUESTION 4

Your network contains an Active Directory domain named contoso.com. The domain contains computers that use IPv4 and IPv6.

You have a DHCP server named Server1 that runs Windows Server 2012.

You install Windows Server 2012 R2 on a server named Server2. You install the DHCP Server server role on Server2.

You need to migrate the DHCP services from Server1 to Server2. The solution must meet the following requirements:

Ensure that existing leases are migrated.

Prevent lease conflicts.

Which cmdlet should you use to retrieve the required information from Server1?

- A. Run the Get-DhcpServerv4Lease cmdlet and specify the ?llLeases parameter.
- B. Run the Export-DhcpServer cmdlet and specify the Leases parameter.
- C. Run the Send-SmigServerData cmdlet and specify the ?omputername cmdlet.
- D. Run the Add-DhcpServer4Lease cmdlet and specify the ?ostname parameter.

Correct Answer: B

References: <https://docs.microsoft.com/en-us/powershell/module/dhcpserver/export-dhcpserver?view=win10-ps>

QUESTION 5

You have external virtual switch with srv-io enabled with 10 Virtual Machines on it. You need to make the Virtual Machines able to talk only to each other.

- A. remove the vswitch and recreate it as private.
- B. add new vswitch
- C. remove vswitch and recreate it as public
- D. adjust srv-io settings

Correct Answer: A

You cannot change the settings of a vswitch with SR-IOV enabled, so you must delete it and recreate it.



To Read the [Whole Q&As](#), please purchase the [Complete Version](#) from [Our website](#).

Try our product !

- 100% Guaranteed Success
- 100% Money Back Guarantee
- 365 Days Free Update
- Instant Download After Purchase
- 24x7 Customer Support
- Average 99.9% Success Rate
- More than 800,000 Satisfied Customers Worldwide
- Multi-Platform capabilities - [Windows](#), [Mac](#), [Android](#), [iPhone](#), [iPod](#), [iPad](#), [Kindle](#)

We provide exam PDF and VCE of Cisco, Microsoft, IBM, CompTIA, Oracle and other IT Certifications. You can view Vendor list of All Certification Exams offered:

<https://www.geekcert.com/allproducts>

Need Help

Please provide as much detail as possible so we can best assist you.
To update a previously submitted ticket:



 <p>One Year Free Update Free update is available within One Year after your purchase. After One Year, you will get 50% discounts for updating. And we are proud to boast a 24/7 efficient Customer Support system via Email.</p>	 <p>Money Back Guarantee To ensure that you are spending on quality products, we provide 100% money back guarantee for 30 days from the date of purchase.</p>	 <p>Security & Privacy We respect customer privacy. We use McAfee's security service to provide you with utmost security for your personal information & peace of mind.</p>
---	---	--

Any charges made through this site will appear as Global Simulators Limited.
All trademarks are the property of their respective owners.
Copyright © geekcert, All Rights Reserved.