



70-412^{Q&As}

Configuring Advanced Windows Server 2012 Services

Pass Microsoft 70-412 Exam with 100% Guarantee

Free Download Real Questions & Answers **PDF** and **VCE** file from:

<https://www.geekcert.com/70-412.html>

100% Passing Guarantee
100% Money Back Assurance

Following Questions and Answers are all new published by Microsoft
Official Exam Center

-  **Instant Download** After Purchase
-  **100% Money Back** Guarantee
-  **365 Days** Free Update
-  **800,000+** Satisfied Customers





QUESTION 1

You have a server named Server1 that runs Windows Server 2012 R2.

A Microsoft Azure Backup of Server1 is created automatically every day.

You need to view the items that are included in the backup.

Which cmdlet should you run?

- A. Get-WBSummary
- B. Get-WBFileSpec
- C. Get-WBJob
- D. Get-OBFileSpec

Correct Answer: D

References: <https://technet.microsoft.com/en-us/library/hh770422.aspx>

QUESTION 2

Your network contains an Active Directory domain named contoso.com. All servers run Windows Server 2012 R2. The domain contains two domain controllers. The domain controllers are configured as shown in the following table.

Domain controller name	Configuration
DC1	<ul style="list-style-type: none">• Domain controller• DNS server
DC2	<ul style="list-style-type: none">• Read-only domain controller (RODC)• DNS server

On DC1, you create an Active Directory-integrated zone named Zone1. You verify that Zone1 replicates to DC2.

You use DNSSEC to sign Zone1.

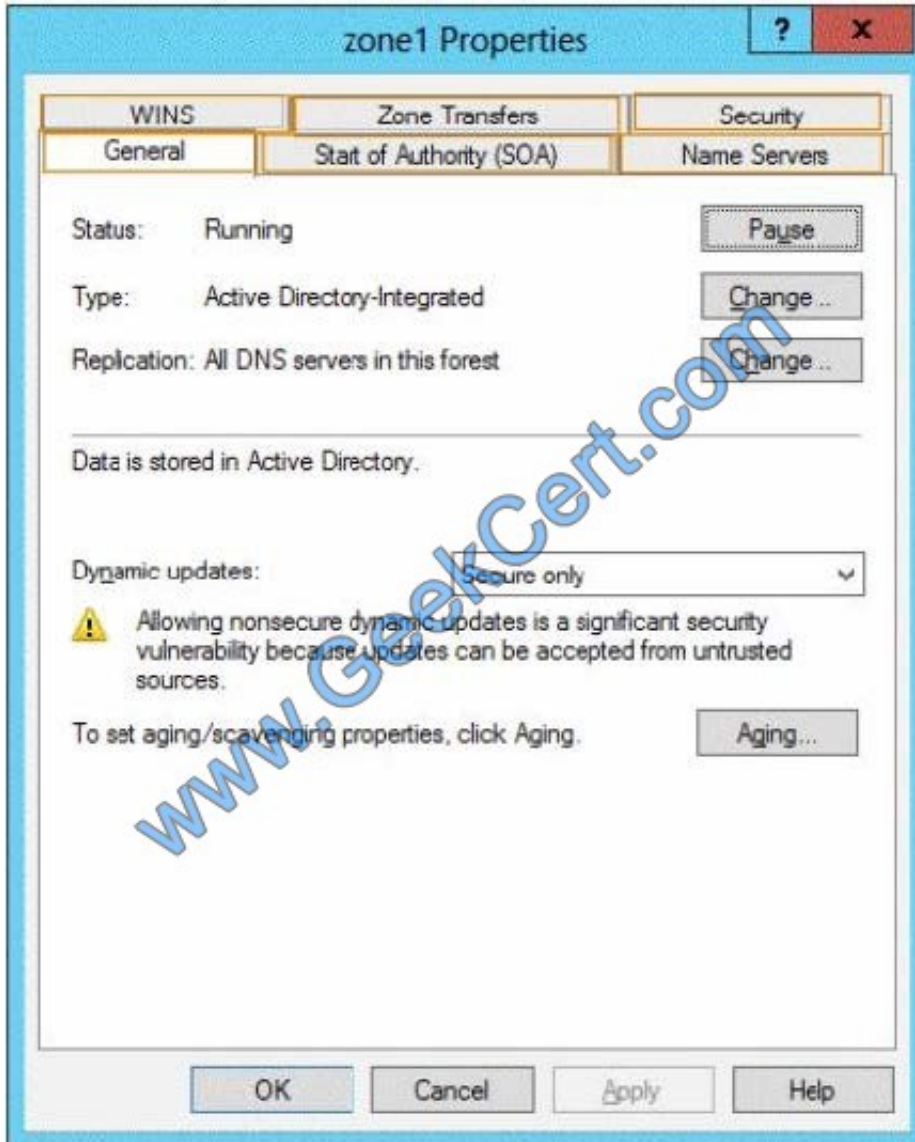
You discover that the updates to Zone1 fail to replicate to DC2.

You need to ensure that Zone1 replicates to DC2.

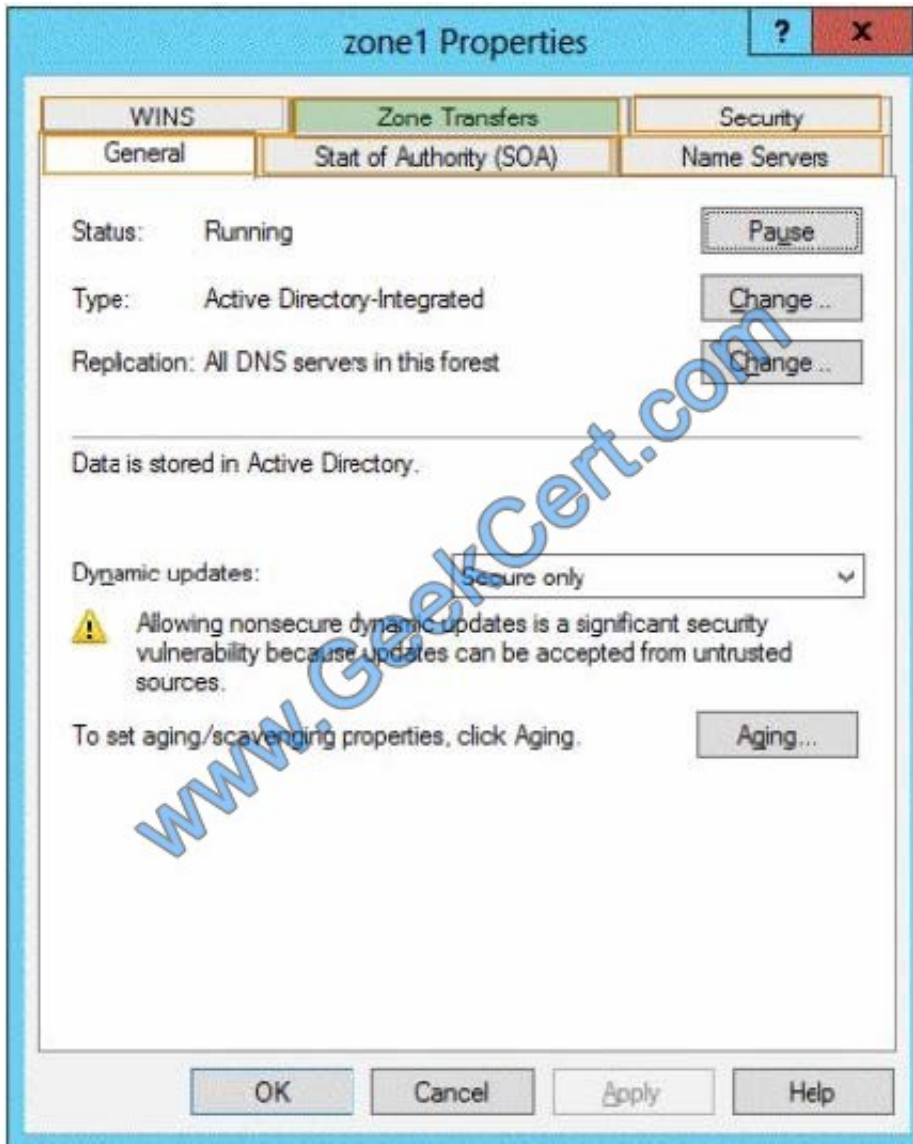
What should you configure on DC1?

To answer, select the appropriate tab in the answer area.

Hot Area:



Correct Answer:



We must allow and configure zone transfers.

To modify zone transfer settings using the Windows interface

Open DNS Manager.

Right-click a DNS zone, and then click Properties.

On the Zone Transfers tab, do one of the following:

-To disable zone transfers, clear the Allow zone transfers check box.

-To allow zone transfers, select the Allow zone transfers check box. If you allowed zone transfers, do one of the following:

-To allow zone transfers to any server, click To any server.

-To allow zone transfers only to the DNS servers that are listed on the Name Servers tab, click Only to servers listed on the Name Servers tab.



-To allow zone transfers only to specific DNS servers, click Only to the following servers, and then add the IP address of one or more DNS servers. Reference: Modify Zone Transfer Settings

QUESTION 3

Your network contains two servers named HV1 and HV2. Both servers run Windows Server 2012 R2 and have the Hyper-V server role installed.

HV1 hosts 25 virtual machines. The virtual machine configuration files and the virtual hard disks are stored in D:\VM.

You shut down all of the virtual machines on HV1.

You copy D:\VM to D:\VM on HV2.

You need to start all of the virtual machines on HV2. You want to achieve this goal by using the minimum amount of administrative effort.

What should you do?

- A. Run the Import-VMInitialReplication cmdlet.
- B. From HV1, export all virtual machines to D:\VM. Copy D:\VM to D:\VM on HV2 and overwrite the existing files. On HV2, run the Import Virtual Machine wizard.
- C. From HV1, export all virtual machines to D:\VM. Copy D:\VM to D:\VM on HV2 and overwrite the existing files. On HV2, run the New Virtual Machine wizard.
- D. Run the Import-VM cmdlet.

Correct Answer: D

Import-VM

Imports a virtual machine from a file.

Example

Imports the virtual machine from its configuration file. The virtual machine is registered in-place, so its files are not copied.

Windows PowerShell

```
PS C:\> Import-VM Path '\\D:\Test\VirtualMachines\5AE40946-3A98-428E-8C83-081A3C6BD18C.XML\'
```

Reference: Import-VM

QUESTION 4

Your network contains an Active Directory forest named contoso.com. The forest contains three domains. All domain controllers run Windows Server 2012 R2.

The forest has a two-way realm trust to a Kerberos realm named adatum.com.



You discover that users in adatum.com can only access resources in the root domain of contoso.com.

You need to ensure that the adatum.com users can access the resources in all of the domains in the forest.

What should you do in the forest?

- A. Delete the realm trust and create a forest trust.
- B. Delete the realm trust and create three external trusts.
- C. Modify the incoming realm trust.
- D. Modify the outgoing realm trust.

Correct Answer: D

*

A one-way, outgoing realm trust allows resources in your Windows Server domain (the domain that you are logged on to at the time that you run the New Trust Wizard) to be accessed by users in the Kerberos realm.

*

You can establish a realm trust between any non-Windows Kerberos version 5 (V5) realm and an Active Directory domain. This trust relationship allows cross-platform interoperability with security services that are based on other versions of the Kerberos V5 protocol, for example, UNIX and MIT implementations. Realm trusts can switch from nontransitive to transitive and back. Realm trusts can also be either one-way or two-way.

Reference: Create a One-Way, Outgoing, Realm Trust

QUESTION 5

Your network contains an Active Directory domain named contoso.com.

All servers run Windows Server 2012 R2. The domain contains a file server named Server1.

The domain contains a domain controller named DC1.

Server1 contains three shared folders.

The folders are configured as shown in the following table.



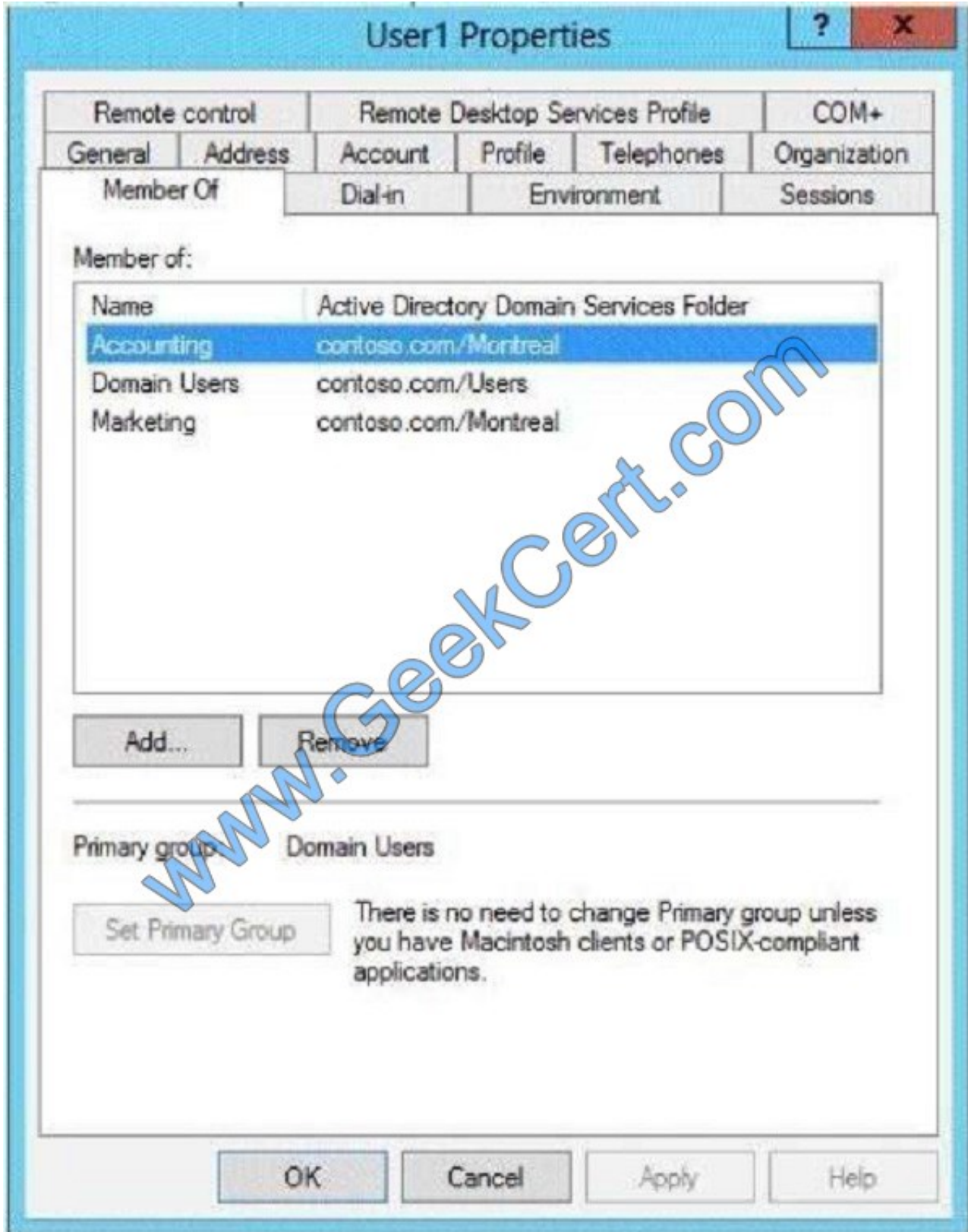
Shared folder name	Share permission	NTFS permission
Folder1	Everyone - Change Marketing - Full Control Accounting - Full Control	Users - Read & Execute, Read Marketing - Full Control
Folder2	Everyone - Change Marketing - Full Control Accounting - Read	Users - Read & Execute, Read Marketing - Full Control
Folder3	Everyone - Change Marketing - Full Control	Users - Read & Execute, Read Marketing - Full Control

Folder2 has a conditional expression of User.Department= = MMarketing".

You discover that a user named User1 cannot access \\Server1\folder2.

User1 can access \\Server1\folder1 and \\Server1\folder3.

You verify the group membership of User1 as shown in the Member Of exhibit. (Click the Exhibit button.)



You verify the organization information of User1 as shown in the Organization exhibit. (Click the Exhibit button.)



The screenshot shows the 'User1 Properties' dialog box with the 'General' tab selected. The dialog has a title bar with a question mark and a close button. Below the title bar is a tabbed interface with the following tabs: Member Of, Dial-in, Environment, Sessions, Remote control, Remote Desktop Services Profile, COM+, General (selected), Address, Account, Profile, Telephones, and Organization. The 'General' tab contains the following fields and controls:

- Job Title:
- Department:
- Company:
- Manager:
 - Name:
 - Buttons:
- Direct reports:

At the bottom of the dialog are four buttons: .

You verify the general properties of User1 as shown in the General exhibit. (Click the Exhibit button.)



The screenshot shows the 'User1 Properties' dialog box with the following fields and values:

Member Of	Dial-in	Environment	Sessions		
Remote control	Remote Desktop Services Profile		COM+		
General	Address	Account	Profile	Telephones	Organization

User1

First name: User1 Initials:

Last name: General

Display name: User1

Description:

Office: Marketing Building

Telephone number: Other...

E-mail:

Web page: www.contoso.com Other...

Buttons: OK, Cancel, Apply, Help

You need to ensure that User1 can access the contents of \\Server1\folder2. What should you do?

A. From a Group Policy object (GPO), set the Support for Dynamic Access Control and Kerberos armoring setting to Always provide claims.



- B. Change the department attribute of User1.
- C. Grant the Full Control NTFS permissions on Folder2 to User1.
- D. Remove User1 from the Accounting global group.

Correct Answer: B

Conditional Expression and users Department must match <http://technet.microsoft.com/en-us/library/jj134043.aspx>

[Latest 70-412 Dumps](#)

[70-412 PDF Dumps](#)

[70-412 Braindumps](#)



To Read the [Whole Q&As](#), please purchase the [Complete Version](#) from [Our website](#).

Try our product !

100% Guaranteed Success
100% Money Back Guarantee
365 Days Free Update
Instant Download After Purchase
24x7 Customer Support
Average 99.9% Success Rate
More than 800,000 Satisfied Customers Worldwide
Multi-Platform capabilities - [Windows](#), [Mac](#), [Android](#), [iPhone](#), [iPod](#), [iPad](#), [Kindle](#)

We provide exam PDF and VCE of Cisco, Microsoft, IBM, CompTIA, Oracle and other IT Certifications.
You can view Vendor list of All Certification Exams offered:

<https://www.geekcert.com/allproducts>

Need Help

Please provide as much detail as possible so we can best assist you.
To update a previously submitted ticket:



 <p>One Year Free Update Free update is available within One Year after your purchase. After One Year, you will get 50% discounts for updating. And we are proud to boast a 24/7 efficient Customer Support system via Email.</p>	 <p>Money Back Guarantee To ensure that you are spending on quality products, we provide 100% money back guarantee for 30 days from the date of purchase.</p>	 <p>Security & Privacy We respect customer privacy. We use McAfee's security service to provide you with utmost security for your personal information & peace of mind.</p>
---	---	--

Any charges made through this site will appear as Global Simulators Limited.
All trademarks are the property of their respective owners.
Copyright © geekcert, All Rights Reserved.