



# 70-417<sup>Q&As</sup>

Upgrading Your Skills to MCSA Windows Server 2012

## Pass Microsoft 70-417 Exam with 100% Guarantee

Free Download Real Questions & Answers **PDF** and **VCE** file from:

<https://www.geekcert.com/70-417.html>

100% Passing Guarantee  
100% Money Back Assurance

Following Questions and Answers are all new published by Microsoft  
Official Exam Center

- ⚙ **Instant Download** After Purchase
- ⚙ **100% Money Back** Guarantee
- ⚙ **365 Days** Free Update
- ⚙ **800,000+** Satisfied Customers



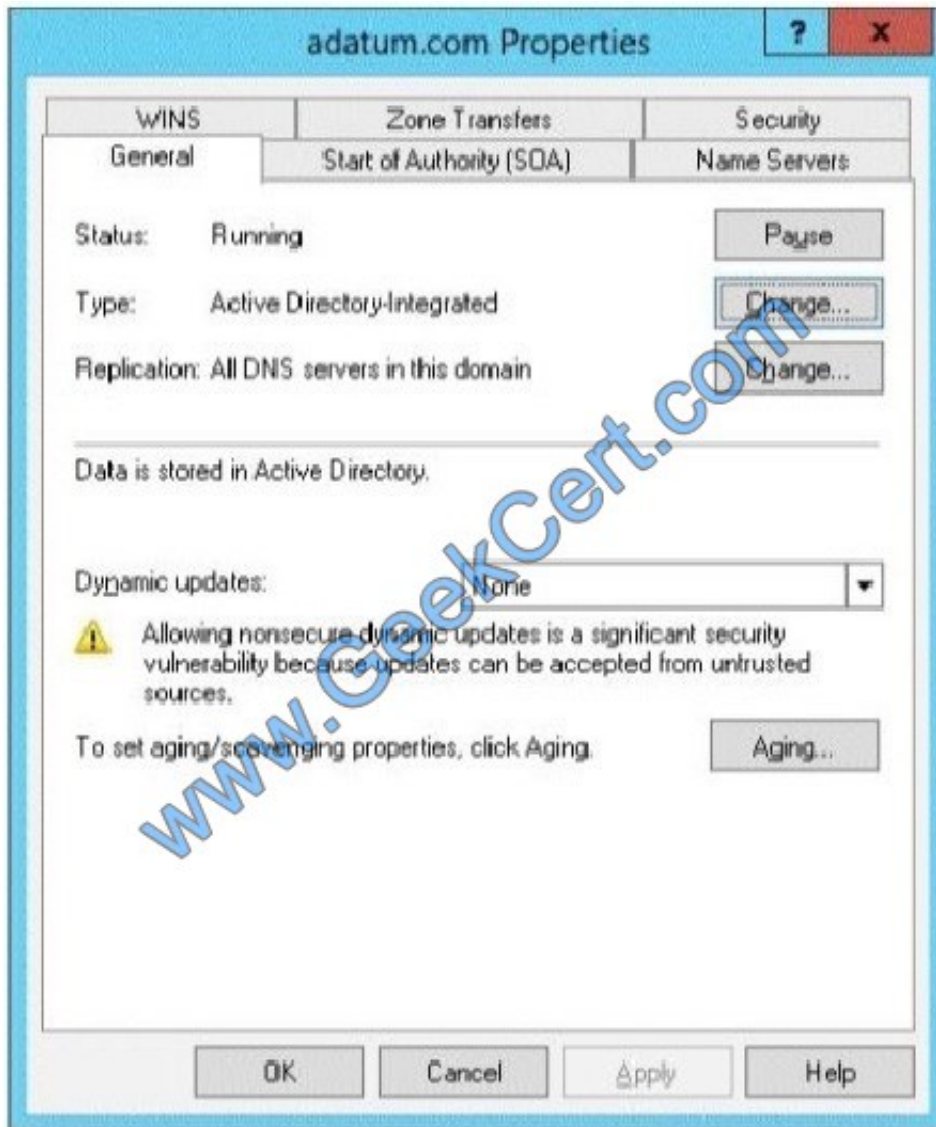


## QUESTION 1

Your network contains an Active Directory domain named contoso.com. The domain contains a domain controller named DC1 that runs Windows Server 2012 R2. DC1 has the DNS Server server role installed.

The network contains client computers that run either Linux, Windows 7, or Windows 8.

You have a zone named adatum.com as shown in the exhibit. (Click the Exhibit button.)



You plan to configure Name Protection on all of the DHCP servers.

You need to configure the adatum.com zone to support Name Protection.

What should you do?

- A. Change the zone type.
- B. Sign the zone.



- C. Add a DNSKEY record.
- D. Configure Dynamic updates.

Correct Answer: D

## QUESTION 2

DRAG DROP You use the entire System Center suite. You integrate Service Manager with Operations Manager. Virtual Machine Manager, Orchestrator, and Active Directory. You perform all remediation by using Orchestrator runbooks. An application experiences performance problems on a periodic basis.

You have the following requirements:

A new incident must be opened when System Center Operations Manager (SCOM) detects a performance problem.

The incident must be closed when the performance problem is resolved.

The incident must be associated with the HR performance problem in Service

You need to configure the environment.

Select and Place:

### Actions

In Operations Manager, create a new monitoring rule that creates an alert.

In Service Manager, create a Business Service for the application, and associate it with the existing problem.

In Service Manager, create a new incident template with a relationship to the existing problem.

In Service Manager, create a new SCOM Alert connector.

### Answer Area

Correct Answer:

**Actions**

In Operations Manager, create a new monitoring rule that creates an alert.

In Service Manager, create a Business Service for the application, and associate it with the existing problem.

In Service Manager, create a new incident template with a relationship to the existing problem.

In Service Manager, create a new SCOM Alert connector.

**Answer Area**

In Service Manager, create a Business Service for the application, and associate it with the existing problem.

In Service Manager, create a new SCOM Alert connector.

In Service Manager, create a new incident template with a relationship to the existing problem.

References: <https://valentincristea.com/2013/11/25/automating-incident-problem-management-part-i-creating-a-scom-monitor-and-generating-fake-alerts/> <https://valentincristea.com/2013/11/28/automating-incident-problem-management-part-ii-configuring-the-scomscsm-connector/>

**QUESTION 3**

Your role of Network Administrator at ABC.com includes the management of the Active Directory Domain Services (AD DS) domain named ABC.com. The network includes servers that run Windows Server 2012. A Windows Server 2012 server named ABC-SAN1 has a locally attached disk storage array. You are configuring a Windows Server 2012 named ABC-File1 server as a file server. You need to configure ABC-File1 to store files on the disk storage array attached to ABC-SAN1. The disk storage must be available as a drive letter in Windows Explorer on ABC-File1. You log in to ABC-SAN1 and create an iSCSI target named TG1.

Which two of the following steps should you perform before you can create the volume on ABC-File1? (Choose two)

- A. Assign an iSCSI initiator ID to TG1 on ABC-SAN1.
- B. Assign an iSCSI initiator ID to TG1 on ABC-File1.
- C. On ABC-SAN1, open the iSCSI initiator and configure it to connect to TG1.
- D. On ABC-File1, open the iSCSI initiator and configure it to connect to TG1.

Correct Answer: AC

**QUESTION 4**

Your network contains an Active Directory domain named contoso.com. Domain controllers run either Windows Server 2008 R2 Service Pack 1 (SP1) or Windows Server 2012 R2.

A support technician accidentally deletes a user account named User1.

You need to use tombstone reanimation to restore the User1 account.



Which tool should you use?

- A. Active Directory Administrative Center
- B. Ntdsutil
- C. Ldp
- D. Esentutl

Correct Answer: C

ADAC would be the perfect solution if this environment was in 2008 R2 functional level; however, it is currently below that due to there being a Windows Server 2003 DC. This means you must use the LDP utility as previously.

If you plan to enable Active Directory Recycle Bin in Windows Server 2012, consider the following:

- By default, Active Directory Recycle Bin is disabled. To enable it, you must first raise the forest functional level of your AD DS or AD LDS environment to that host instances of AD LDS configuration sets be running Windows Server 2008 R2 or higher.
- The process of enabling Active Directory Recycle Bin is irreversible. After you enable Active Directory Recycle Bin in your environment, you cannot disable it.
- To manage the Recycle Bin feature through a user interface, you must install the version of Active Directory Administrative Center in Windows Server 2012 R2.

References: <http://technet.microsoft.com/en-us/library/hh831702.aspx>

## QUESTION 5

### HOTSPOT

Your network contains an Active Directory domain named contoso.com.

Technicians use Windows Deployment Services (WDS) to deploy Windows Server 2012 R2.

The network contains a server named Server1 that runs Windows Server 2012 R2. Server1 has the Hyper-V server role installed.

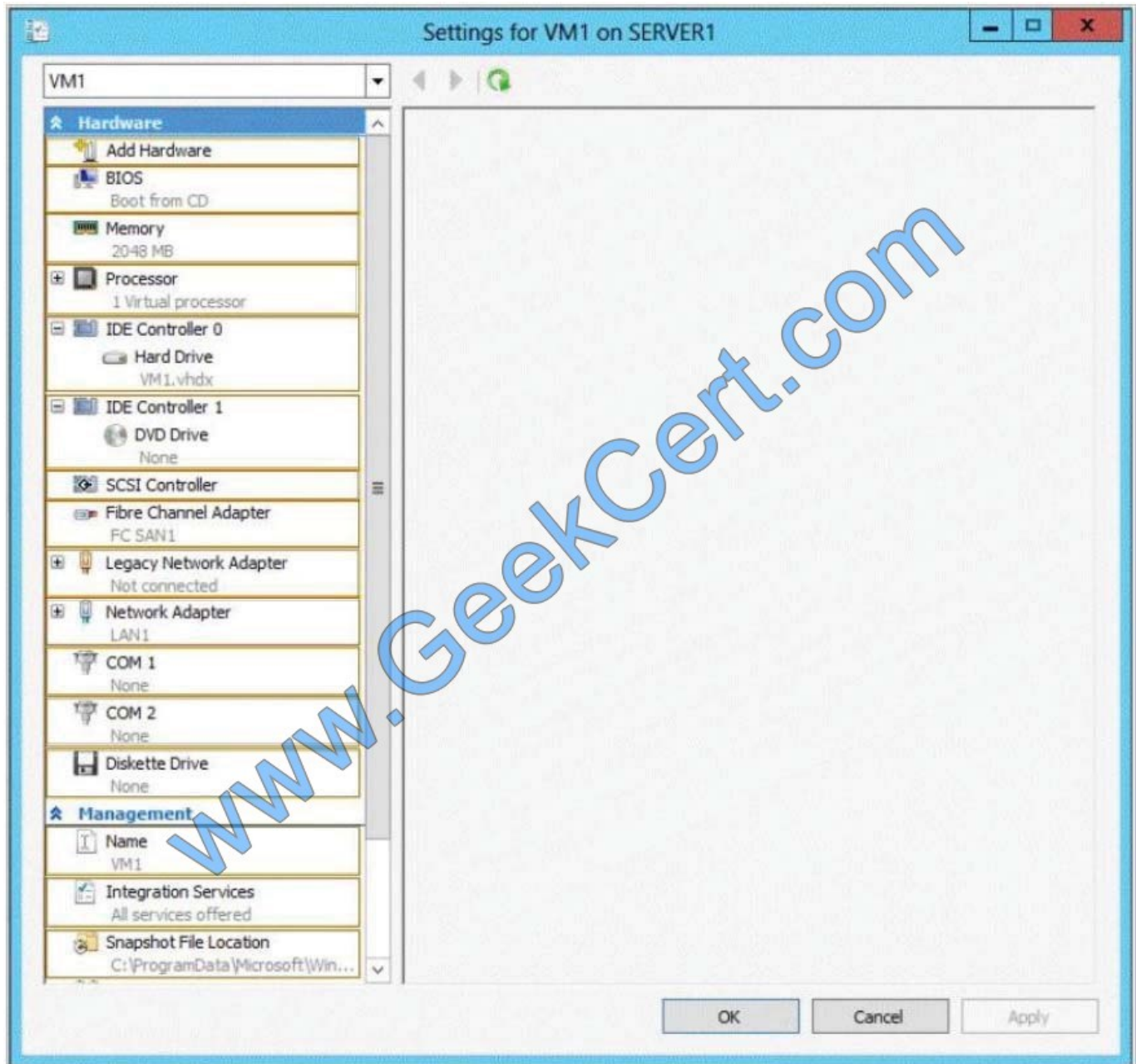
You need to ensure that you can use WDS to deploy Windows Server 2012 R2 to a virtual machine named VM1.

Which settings should you configure?

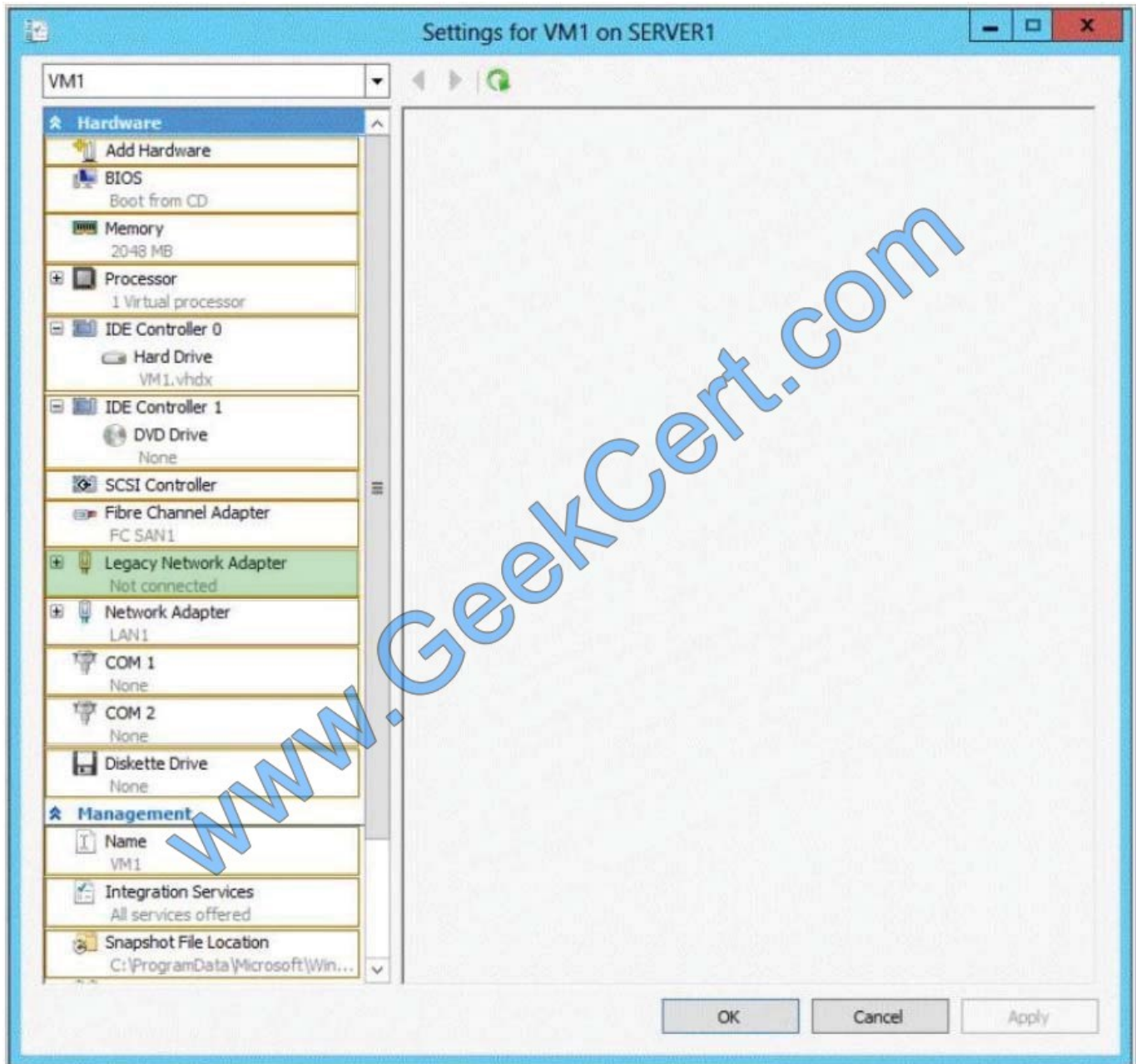
To answer, select the appropriate settings in the answer area.

Hot Area:





Correct Answer:



WDS Allows network-based installation of Windows operating systems, which reduces the complexity and cost when compared to manual installations. Thus you should configure the appropriate network settings.

References: <http://technet.microsoft.com/en-us/library/hh831764.aspx>

[Latest 70-417 Dumps](#)

[70-417 PDF Dumps](#)

[70-417 Exam Questions](#)



To Read the [Whole Q&As](#), please purchase the [Complete Version](#) from [Our website](#).

## Try our product !

100% Guaranteed Success

100% Money Back Guarantee

365 Days Free Update

Instant Download After Purchase

24x7 Customer Support

Average 99.9% Success Rate

More than 800,000 Satisfied Customers Worldwide

Multi-Platform capabilities - [Windows](#), [Mac](#), [Android](#), [iPhone](#), [iPod](#), [iPad](#), [Kindle](#)

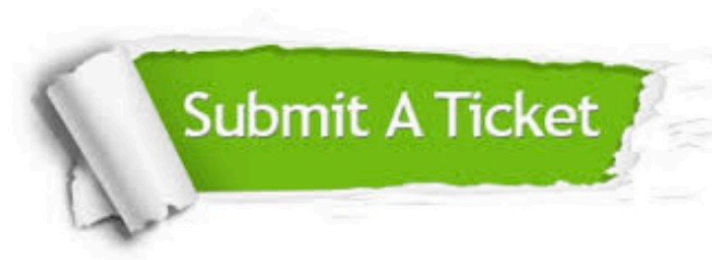
We provide exam PDF and VCE of Cisco, Microsoft, IBM, CompTIA, Oracle and other IT Certifications.  
You can view Vendor list of All Certification Exams offered:

<https://www.geekcert.com/allproducts>

## Need Help

Please provide as much detail as possible so we can best assist you.

To update a previously submitted ticket:



 <b>One Year Free Update</b> Free update is available within One Year after your purchase. After One Year, you will get 50% discounts for updating. And we are proud to boast a 24/7 efficient Customer Support system via Email.	 <b>Money Back Guarantee</b> To ensure that you are spending on quality products, we provide 100% money back guarantee for 30 days from the date of purchase.	 <b>Security &amp; Privacy</b> We respect customer privacy. We use McAfee's security service to provide you with utmost security for your personal information & peace of mind.
---	---	--

Any charges made through this site will appear as Global Simulators Limited.

All trademarks are the property of their respective owners.

Copyright © geekcert, All Rights Reserved.