



70-460^{Q&As}

Transition Your MCITP: Business Intelligence Developer 2008 to
MCSE: Business Intelligence

Pass Microsoft 70-460 Exam with 100% Guarantee

Free Download Real Questions & Answers **PDF** and **VCE** file from:

<https://www.geekcert.com/70-460.html>

100% Passing Guarantee
100% Money Back Assurance

Following Questions and Answers are all new published by Microsoft
Official Exam Center

-  **Instant Download** After Purchase
-  **100% Money Back** Guarantee
-  **365 Days** Free Update
-  **800,000+** Satisfied Customers





QUESTION 1

You are creating a new report in SQL Server Report Builder. You add a Windows Azure SQL Database data source. Then you add a dataset that has four fields named Year, Country, Category, and Sales. You must design a matrix as shown in the following table.

	CY 2003	CY2004
Accessories	293,710	407,050
Bikes	9,359,103	9,162,325
Clothing	138,248	201,525
Australia	3,033,784	2,563,884
Canada	535,784	673,628
France	1,026,325	922,179
Germany	1,058,406	1,076,891
United Kingdom	1,298,249	1,210,286
United States	2,838,512	3,324,031
Total	9,791,060	9,770,901

The category rows (the first three rows as shown in the diagram) must present total sales amount by category. The country rows (the next six rows as shown in the diagram) must present total sales amount by country. The total row must

present the total sales for each year.

You add a matrix to the report. You add a grouping of the Country field on the rows and a grouping of the Year field on the columns.

You need to add the categories on the rows of the matrix. Which Row Group option should you select when you add the group?

- A. Adjacent Below
- B. Child Group
- C. Parent Group
- D. Adjacent Above

Correct Answer: A

QUESTION 2

You need to recommend a solution for the sales department that meets the security requirements. What should you recommend?

- A. Create one role for all of the sales department users. Configure the role to have read access to the sales transactions. Ensure that all of the reports that access the sales transaction data restrict read access to the data from the corresponding sales department region only.
- B. Create one role for each region. Configure each role to have read access to a specific region. Add the sales



department users to their corresponding role.

C. Create one role for all of the sales department users. Add a DAX filter that reads the current user name and retrieves the user's region.

D. Create a table for each region. Create a role for each region. Grant each role read access to its corresponding table.

Correct Answer: C

QUESTION 3

You are developing a SQL Server Analysis Services (SSAS) cube. The cube contains several dimensions, a local measure group, and a linked measure group. Both measure groups use MOLAP partitions.

You need to write-enable one of the linked measure group partitions to support Microsoft Excel 2010 PivotTable What-If Analysis.

What should you do before the partition can be write-enabled?

A. Implement the local measure group as a linked measure group.

B. Implement the linked measure group as a local measure group.

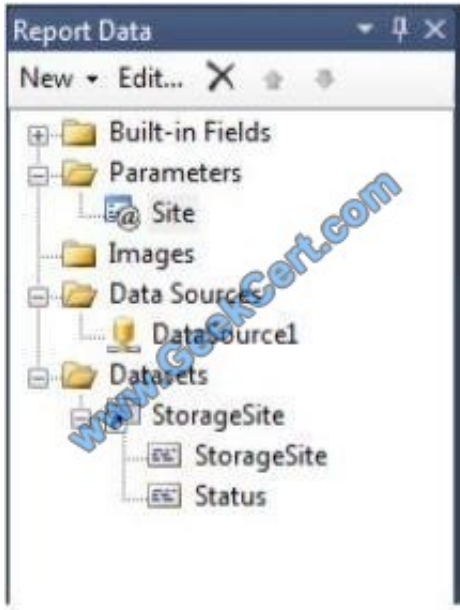
C. Set the Type property of the partition's measure group to Forecast.

D. Set the StorageMode property of the linked measure group to Rolap.

Correct Answer: B

QUESTION 4

You are designing a dataset for a SQL Server Reporting Services (SSRS) report. The report includes the report items displayed in the following graphic.



The dataset is sourced from a commonly used stored procedure in an inventory data mart hosted in a SQL Azure database.

It returns the status for all products across all storage sites. The report must display data for the storage site that is selected by the Site report parameter. You cannot change the stored procedure code.

You need to filter the dataset to use only data specific to the selected site.

How should you configure the filter?

To answer, drag the appropriate expression or expressions to the correct location or locations in the answer area. (Answer choices may be used once, more than once, or not all.)

Select and Place:

Change filters.

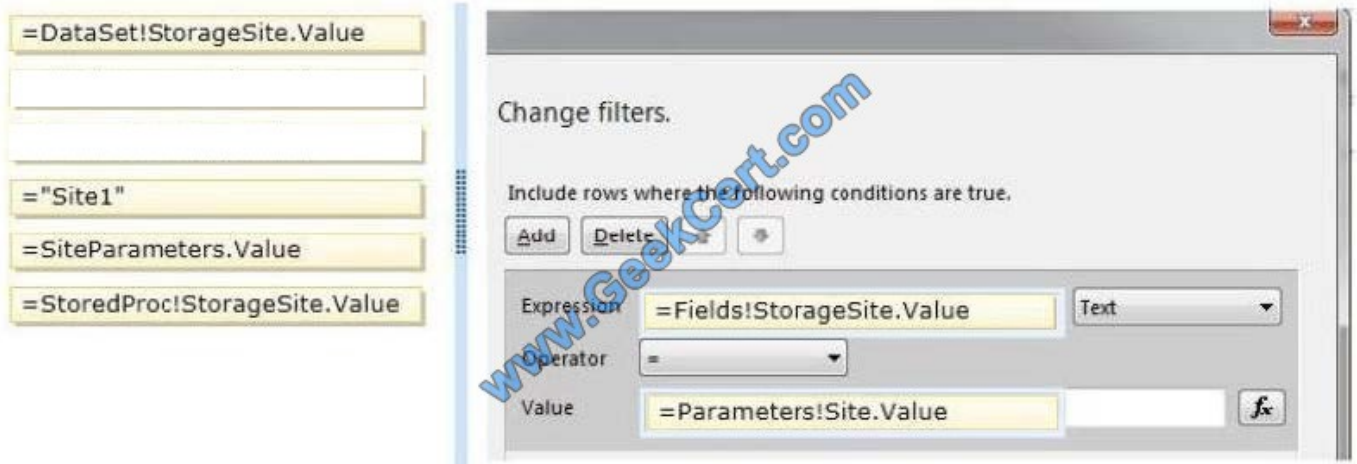
Include rows where the following conditions are true.

Expression

Operator

Value

Correct Answer:



QUESTION 5

You are designing a customer dimension for a multidimensional OLAP (MOLAP) database. The dimension table will contain millions of rows of data. Customer dimension attributes will come from the following two sources:

An enterprise resource planning (ERP) system that contains millions of rows of data. Attributes from this source will be updated daily.

A marketing database that contains thousands of rows of data representing customers\' geographic information. Attributes from this source will be updated monthly.

Most report queries against the cube use attributes from both sources. Customers in the cube dimension will frequently be filtered by the geographic attributes. You need to design the dimension table and cube dimension to ensure that report

queries perform well, and minimize the time required to reprocess cube attributes.

What should you do? (More than one answer choice may achieve the goal. Select the BEST answer.)

- A. Create a dimension table for each source. Create one cube dimension that joins the two dimension tables together.
- B. Create one dimension table that combines data from both sources. Create a cube dimension for each source.
- C. Create one dimension table that combines data from both sources. Create one cube dimension that references the dimension table.
- D. Create a dimension table for each source, and a cube dimension for each source.

Correct Answer: D



To Read the [Whole Q&As](#), please purchase the [Complete Version](#) from [Our website](#).

Try our product !

- 100% Guaranteed Success
- 100% Money Back Guarantee
- 365 Days Free Update
- Instant Download After Purchase
- 24x7 Customer Support
- Average 99.9% Success Rate
- More than 800,000 Satisfied Customers Worldwide
- Multi-Platform capabilities - [Windows](#), [Mac](#), [Android](#), [iPhone](#), [iPod](#), [iPad](#), [Kindle](#)

We provide exam PDF and VCE of Cisco, Microsoft, IBM, CompTIA, Oracle and other IT Certifications. You can view Vendor list of All Certification Exams offered:

<https://www.geekcert.com/allproducts>

Need Help

Please provide as much detail as possible so we can best assist you.
To update a previously submitted ticket:



 <p>One Year Free Update Free update is available within One Year after your purchase. After One Year, you will get 50% discounts for updating. And we are proud to boast a 24/7 efficient Customer Support system via Email.</p>	 <p>Money Back Guarantee To ensure that you are spending on quality products, we provide 100% money back guarantee for 30 days from the date of purchase.</p>	 <p>Security & Privacy We respect customer privacy. We use McAfee's security service to provide you with utmost security for your personal information & peace of mind.</p>
---	---	--

Any charges made through this site will appear as Global Simulators Limited.
All trademarks are the property of their respective owners.
Copyright © geekcert, All Rights Reserved.