



# 70-462<sup>Q&As</sup>

Administering Microsoft SQL Server 2012/2014 Databases

## Pass Microsoft 70-462 Exam with 100% Guarantee

Free Download Real Questions & Answers **PDF** and **VCE** file from:

<https://www.geekcert.com/70-462.html>

100% Passing Guarantee  
100% Money Back Assurance

Following Questions and Answers are all new published by Microsoft  
Official Exam Center

- ⚙ **Instant Download** After Purchase
- ⚙ **100% Money Back** Guarantee
- ⚙ **365 Days** Free Update
- ⚙ **800,000+** Satisfied Customers





### QUESTION 1

You administer a Microsoft Azure SQL Database database named Human\_Resources. The database contains 2 tables named Employees and SalaryDetails.

You add two Windows groups as logins for the server:

CORP\Employees - All company employees

CORP\HRAdmins - HR administrators only

HR Administrators are also company employees.

You need to grant users access according to the following requirements:

CORP\Employees should have SELECT access to the Employees table.

Only users in CORP\HRAdmins should have SELECT access to the SalaryDetails table.

Logins are based only on Windows security groups.

What should you do?

- A. Create a database role called Employees. Add CORP\Employees to the db\_datareader role. Add all company employees except HR administrators to the Employees role. Deny SELECT access to the SalaryDetails table to the Employees role.
- B. Create a database role called HRAdmins. Add all company employees except HR administrators to the db\_datareader role, Add all HR administrators to the HRAdmins role. Grant SELECT access to the SalaryDetails table to the HRAdmins role. Deny SELECT access to the SalaryDetails table to the db\_datareader role.
- C. Create two database roles: Employees and HRAdmins. Add all company employees to the Employees role. Add HR administrators to the HRAdmins role. Grant SELECT access to all tables except SalaryDetails to the Employees role. Grant SELECT access to the SalaryDetails table to the HRAdmins role. Deny SELECT access to the SalaryDetails table to the Employees role.
- D. Create a database role called Employees. Add all HR administrators to the db\_datareader role. Add all company employees to the Employees role. Grant SELECT access to all tables except the SalaryDetails table to the Employees role. Deny SELECT access to the SalaryDetails table to the Employees role.

Correct Answer: D

---

### QUESTION 2

You are implementing a SQL Server five-node failover cluster.

You need to choose a quorum configuration. Which configuration should you use?

- A. Distributed file system (DFS)
- B. Cluster Shared Volume (CSV)



C. Node and Disk Majority

D. Node Majority

Correct Answer: D

Node Majority is recommended for clusters with an odd number of nodes.

Incorrect Answers:

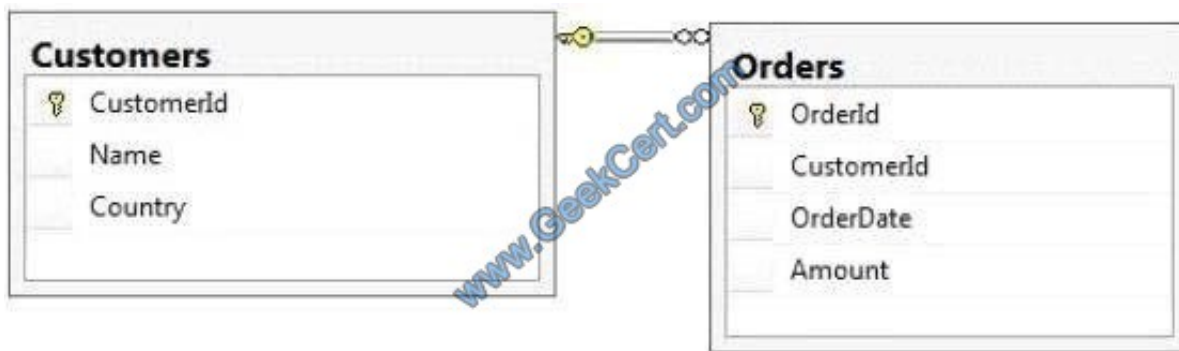
A, B: These are not quorum configuration choices.

: Node and Disk Majority is recommended for clusters with an even number of nodes.

References: [https://docs.microsoft.com/en-us/previous-versions/windows/it-pro/windows-server-2008-R2-and-2008/cc731739\(v=ws.11\)](https://docs.microsoft.com/en-us/previous-versions/windows/it-pro/windows-server-2008-R2-and-2008/cc731739(v=ws.11))

### QUESTION 3

You administer a Microsoft SQL Server 2012 database named ContosoDb. Tables are defined as shown in the exhibit. (Click the Exhibit button.)



You need to display rows from the Orders table for the Customers row having the CustomerId value set to 1 in the following XML format.

```
<Customers>
  <Name>Customer A</Name>
  <Country>Australia</Country>
  <Orders>
    <OrderId>1</OrderId>
    <OrderDate>2000-01-01T00:00:00</OrderDate>
    <Amount>3400.00</Amount>
  </Orders>
  <Orders>
    <OrderId>2</OrderId>
    <OrderDate>2001-01-01T00:00:00</OrderDate>
    <Amount>4500.00</Amount>
  </Orders>
</Customers>
```



- A. `SELECT OrderId, OrderDate, Amount, Name, Country`  
`FROM Orders`  
`INNER JOIN Customers ON Orders.CustomerId = Customers-`  
`CustomerId`  
`WHERE Customers.CustomerId = 1`  
`FOR XML RAW`
- B. `SELECT OrderId, OrderDate, Amount, Name, Country`  
`FROM Orders`  
`INNER JOIN Customers`  
`ON Orders.CustomerId = Customers.CustomerId`  
`WHERE Customers.CustomerId = 1`  
`FOR XML RAW, ELEMENTS`
- C. `SELECT OrderId, OrderDate, Amount, Name, Country`  
`FROM Orders`  
`INNER JOIN Customers`  
`ON Orders.CustomerId = Customers.CustomerId`  
`WHERE Customers.CustomerId = 1`  
`FOR XML AUTO`
- D. `SELECT OrderId, OrderDate, Amount, Name, Country`  
`FROM Orders`  
`INNER JOIN Customers`  
`ON Orders.CustomerId = Customers.CustomerId`  
`WHERE Customers.CustomerId = 1`  
`FOR XML AUTO, ELEMENTS`
- E. `SELECT Name, Country, OrderId, OrderDate, Amount`  
`FROM Orders`  
`INNER JOIN Customers`  
`ON Orders.CustomerId = Customers.CustomerId`  
`WHERE Customers.CustomerId = 1`  
`FOR XML AUTO, ELEMENTS`

Which Transact-SQL query should you use?



- F. `SELECT Name, Country, OrderId, OrderDate, Amount  
FROM Orders  
INNER JOIN Customers  
ON Orders.CustomerId = Customers.CustomerId  
WHERE Customers.CustomerId =  
FOR XML AUTO, ELEMENTS`
- G. `SELECT Name AS '@Name', Country AS '@Country', OrderId,  
OrderDate, Amount  
FROM Orders  
INNER JOIN Customers ON Orders.CustomerId =  
Customers.CustomerId  
WHERE Customers.CustomerId = 1  
FOR XML PATH ('Customers')`
- H. `SELECT Name AS 'Customers/Name', Country AS  
'Customers/Country', OrderId,  
OrderDate, Amount  
FROM Orders  
INNER JOIN Customers ON Orders.CustomerId =  
Customers.CustomerId  
WHERE Customers.CustomerId = 1  
FOR XML PATH ('Customers')`

- A. OptionA  
B. OptionB  
C. OptionC  
D. OptionD  
E. OptionE  
F. OptionF  
G. OptionG  
H. OptionH

Correct Answer: E

For XML clause in Select Query allows you to return the query results in XML format. You can specify Auto, RAW, EXPLICIT and PATH in For XML clause.

Example:



```
1 SELECT Name, Country, OrderId, OrderDate, Amount
2 FROM Orders INNER JOIN Customers ON Orders.CustomerId = Customers.CustomerId
3 WHERE Customers.CustomerId = 1
4 FOR XML AUTO, ELEMENTS
```

Incorrect:

Not F: The following line is incomplete (a 1 need to be appended to end of it):

WHERE Customers.CustomerId =

References: <http://www.techbubbles.com/sql-server/for-xml-auto-mode-example-in-sql-server/>

#### QUESTION 4

**HOTSPOT** You administer a Microsoft SQL Server 2012 instance. You need to configure an existing SQL Authenticated Login that meets the following requirements: Enforces password policy No password expiration enforcement Resets the default database to AdventureWorks database Which option or options should you choose in the Login Properties of the login for User1? (To answer, configure the appropriate option or options in the dialog box in the answer are A. )

Hot Area:





Login Properties - User1

Select a page: General, Server Roles, User Mapping, Securables, Status

Script Help

Login name: User1 Search...

☐ Windows authentication

☒ SQL Server authentication

Password: .....

Confirm password: .....

☐ Specify old password

Old password: .....

☐ Enforce password policy

☐ Enforce password expiration

☐ User must change password at next login

☐ Mapped to certificate

☐ Mapped to asymmetric key

☐ Map to Credential Add

Mapped Credentials

Credential	Provider
Cred	

Remove

Cancel

Default database: ReportServer\$SQL2012TempDB

Default language: AdventureWorks2008R2

Connection

Server: .....

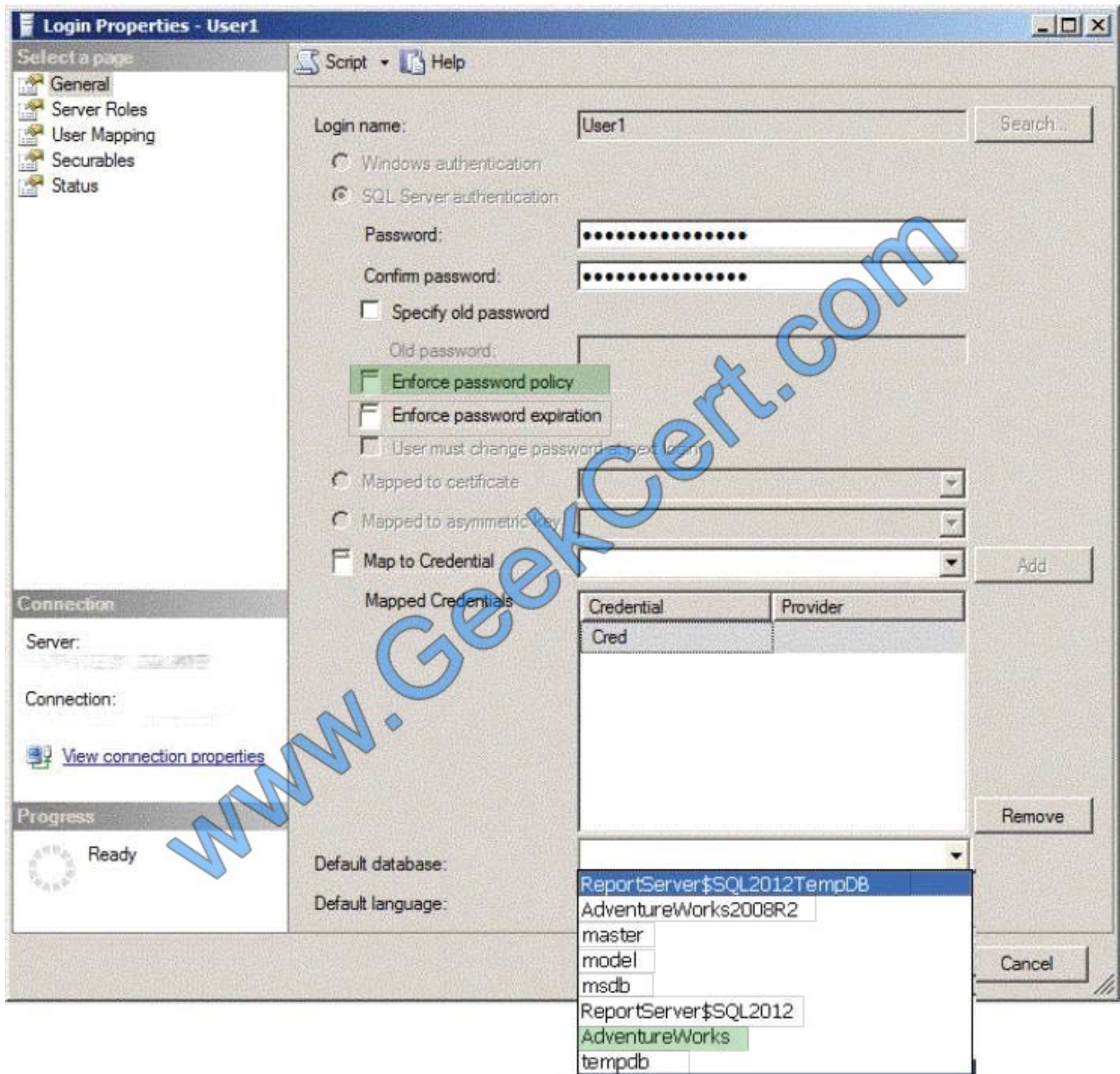
Connection: .....

[View connection properties](#)

Progress

Ready

Correct Answer:

**QUESTION 5**

Which of the following SQL Server 2012 tools assists DBAs in running and analyzing trace results?

- A. SSIS
- B. SQL Profiler
- C. AlwaysOn
- D. EXP





Correct Answer: B

References: <https://msdn.microsoft.com/en-us/library/ms187929%28v=sql.110%29.aspx>

[70-462 VCE Dumps](#)

[70-462 Practice Test](#)

[70-462 Exam Questions](#)



To Read the [Whole Q&As](#), please purchase the [Complete Version](#) from [Our website](#).

## Try our product !

100% Guaranteed Success

100% Money Back Guarantee

365 Days Free Update

Instant Download After Purchase

24x7 Customer Support

Average 99.9% Success Rate

More than 800,000 Satisfied Customers Worldwide

Multi-Platform capabilities - [Windows](#), [Mac](#), [Android](#), [iPhone](#), [iPod](#), [iPad](#), [Kindle](#)

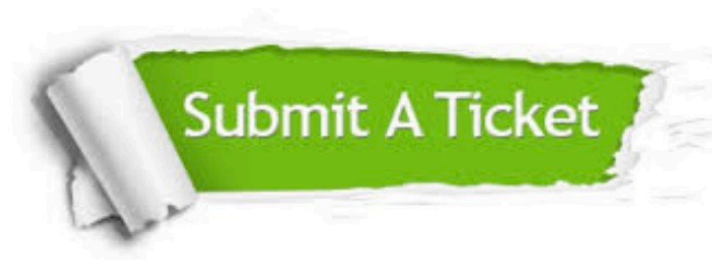
We provide exam PDF and VCE of Cisco, Microsoft, IBM, CompTIA, Oracle and other IT Certifications.  
You can view Vendor list of All Certification Exams offered:

<https://www.geekcert.com/allproducts>

## Need Help

Please provide as much detail as possible so we can best assist you.

To update a previously submitted ticket:



 <b>One Year Free Update</b> Free update is available within One Year after your purchase. After One Year, you will get 50% discounts for updating. And we are proud to boast a 24/7 efficient Customer Support system via Email.	 <b>Money Back Guarantee</b> To ensure that you are spending on quality products, we provide 100% money back guarantee for 30 days from the date of purchase.	 <b>Security &amp; Privacy</b> We respect customer privacy. We use McAfee's security service to provide you with utmost security for your personal information & peace of mind.
---	---	--

Any charges made through this site will appear as Global Simulators Limited.

All trademarks are the property of their respective owners.

Copyright © geekcert, All Rights Reserved.