



70-462^{Q&As}

Administering Microsoft SQL Server 2012/2014 Databases

Pass Microsoft 70-462 Exam with 100% Guarantee

Free Download Real Questions & Answers **PDF** and **VCE** file from:

<https://www.geekcert.com/70-462.html>

100% Passing Guarantee
100% Money Back Assurance

Following Questions and Answers are all new published by Microsoft
Official Exam Center

- ⚙ **Instant Download** After Purchase
- ⚙ **100% Money Back** Guarantee
- ⚙ **365 Days** Free Update
- ⚙ **800,000+** Satisfied Customers





QUESTION 1

Note: This question is part of a series of questions that use the same set of answer choices. An answer choice may be correct for more than one question in the series.

You administer a SQL Server database server that contains a database named SalesDb. SalesDb contains a schema named Customers that has a table named Regions. A user named UserA is a member of a role named Sales.

UserA is granted the Select permission on the Regions table. The Sales role is granted the Select permission on the Customers schema.

You need to ensure that UserA is disallowed to select from any of the tables in the Customers schema.

Which Transact-SQL statement should you use?

- A. DENY SELECT ON Object::Regions FROM Sales
- B. DENY SELECT ON Schema::Customers FROM Sales
- C. REVOKE SELECT ON Object::Regions FROM Sales
- D. REVOKE SELECT ON Schema::Customers FROM Sales
- E. DENY SELECT ON Object::Regions FROM UserA
- F. DENY SELECT ON Schema::Customers FROM UserA
- G. REVOKE SELECT ON Object::Regions FROM UserA
- H. REVOKE SELECT ON Schema::Customers FROM UserA
- I. EXEC sp_addrolemember 'Sales', 'UserA'
- J. EXEC sp_droprolemember 'Sales', 'UserA'

Correct Answer: F

References: <https://docs.microsoft.com/en-us/sql/t-sql/statements/deny-schema-permissions-transact-sql>
<http://msdn.microsoft.com/en-us/library/ff848791.aspx>

QUESTION 2

DRAG DROP

You administer a Microsoft SQL Server 2012 server that has a database named Contoso. The Contoso database has a table named EmployeeSalary in a schema named HumanResources.

You need to create a script that writes audit events into the application log whenever data in the EmployeeSalary table is modified.

Which four Transact-SQL statements should you use? (To answer, move the appropriate statements from the list of statements to the answer area and arrange them in the correct order.)



Select and Place:

<pre>CREATE DATABASE AUDIT SPECIFICATION C_AuditSpec FOR SERVER AUDIT C_Audit ADD (INSERT ON HumanResources.EmployeeSalary BY dbo), ADD (UPDATE ON HumanResources.EmployeeSalary BY dbo), ADD (DELETE ON HumanResources.EmployeeSalary BY dbo) ALTER DATABASE AUDIT SPECIFICATION C_AuditSpec WITH (STATE=ON)</pre>	
<pre>CREATE SERVER AUDIT SPECIFICATION C_AuditSpec FOR SERVER AUDIT C_Audit ADD (SCHEMA_OBJECT_ACCESS_GROUP) ALTER SERVER AUDIT SPECIFICATION C_AuditSpec WITH (STATE=ON)</pre>	
<pre>CREATE SERVER AUDIT C_Audit TO FILE (FILEPATH = 'ApplicationLog') ALTER SERVER AUDIT C_Audit WITH (STATE = ON)</pre>	
<pre>CREATE SERVER AUDIT C_Audit TO APPLICATION_LOG ALTER SERVER AUDIT C_Audit WITH (STATE = ON)</pre>	
<pre>CREATE DATABASE AUDIT SPECIFICATION C_AuditSpec FOR SERVER AUDIT C_Audit ADD (INSERT ON HumanResources.EmployeeSalary BY public), ADD (UPDATE ON HumanResources.EmployeeSalary BY public), ADD (DELETE ON HumanResources.EmployeeSalary BY public) ALTER DATABASE AUDIT SPECIFICATION C_AuditSpec WITH (STATE=ON)</pre>	
Use Master	
Use Contoso	

Correct Answer:



Use Master	Use Contoso
<pre>CREATE DATABASE AUDIT SPECIFICATION C_AuditSpec FOR SERVER AUDIT C_Audit ADD (INSERT ON HumanResources.EmployeeSalary BY dbo), ADD (UPDATE ON HumanResources.EmployeeSalary BY dbo), ADD (DELETE ON HumanResources.EmployeeSalary BY dbo) ALTER DATABASE AUDIT SPECIFICATION C_AuditSpec WITH (STATE=ON) CREATE SERVER AUDIT SPECIFICATION C_AuditSpec FOR SERVER AUDIT C_Audit ADD (SCHEMA_OBJECT_ACCESS_GROUP) ALTER SERVER AUDIT SPECIFICATION C_AuditSpec WITH (STATE=ON) CREATE SERVER AUDIT C_Audit TO FILE (FILEPATH = 'ApplicationLog') ALTER SERVER AUDIT C_Audit WITH (STATE = ON)</pre>	<pre>CREATE DATABASE AUDIT SPECIFICATION C_AuditSpec FOR SERVER AUDIT C_Audit ADD (INSERT ON HumanResources.EmployeeSalary BY public), ADD (UPDATE ON HumanResources.EmployeeSalary BY public), ADD (DELETE ON HumanResources.EmployeeSalary BY public) ALTER DATABASE AUDIT SPECIFICATION C_AuditSpec WITH (STATE=ON)</pre>

QUESTION 3



You administer two Microsoft SQL Server 2012 servers. Each server resides in a different, untrusted domain.

You plan to configure database mirroring.

You need to be able to create database mirroring endpoints on both servers.

What should you do?

- A. Configure the SQL Server service account to use Network Service.
- B. Use a server certificate.
- C. Use a database certificate.
- D. Configure the SQL Server service account to use Local System.

Correct Answer: B

QUESTION 4

Which of the following is a valid upgrade path for SQL Server 2012?

- A. SQL Server 2000 -> SQL Server 2012
- B. SQL Server 2000 -> SQL Server 2005 -> SQL Server 2012
- C. SQL Server 7 -> SQL Server 2012
- D. Oracle 11g -> SQL Server 2012

Correct Answer: B

References: <https://technet.microsoft.com/en-us/library/ms143393%28v=sql.110%29.aspx>
<https://technet.microsoft.com/en-us/library/ms143393%28v=sql.90%29.aspx>

QUESTION 5

HOTSPOT

You administer a Microsoft SQL Server 2012 database instance.

The instance is running on a server with the following configuration:

1TB RAM

SAN storage for database and log files

4 quad-core processors

64-Bit Windows 2008R2 operating system

This instance hosts a database with large partitioned tables. Users report that complex queries are taking a long time to complete.

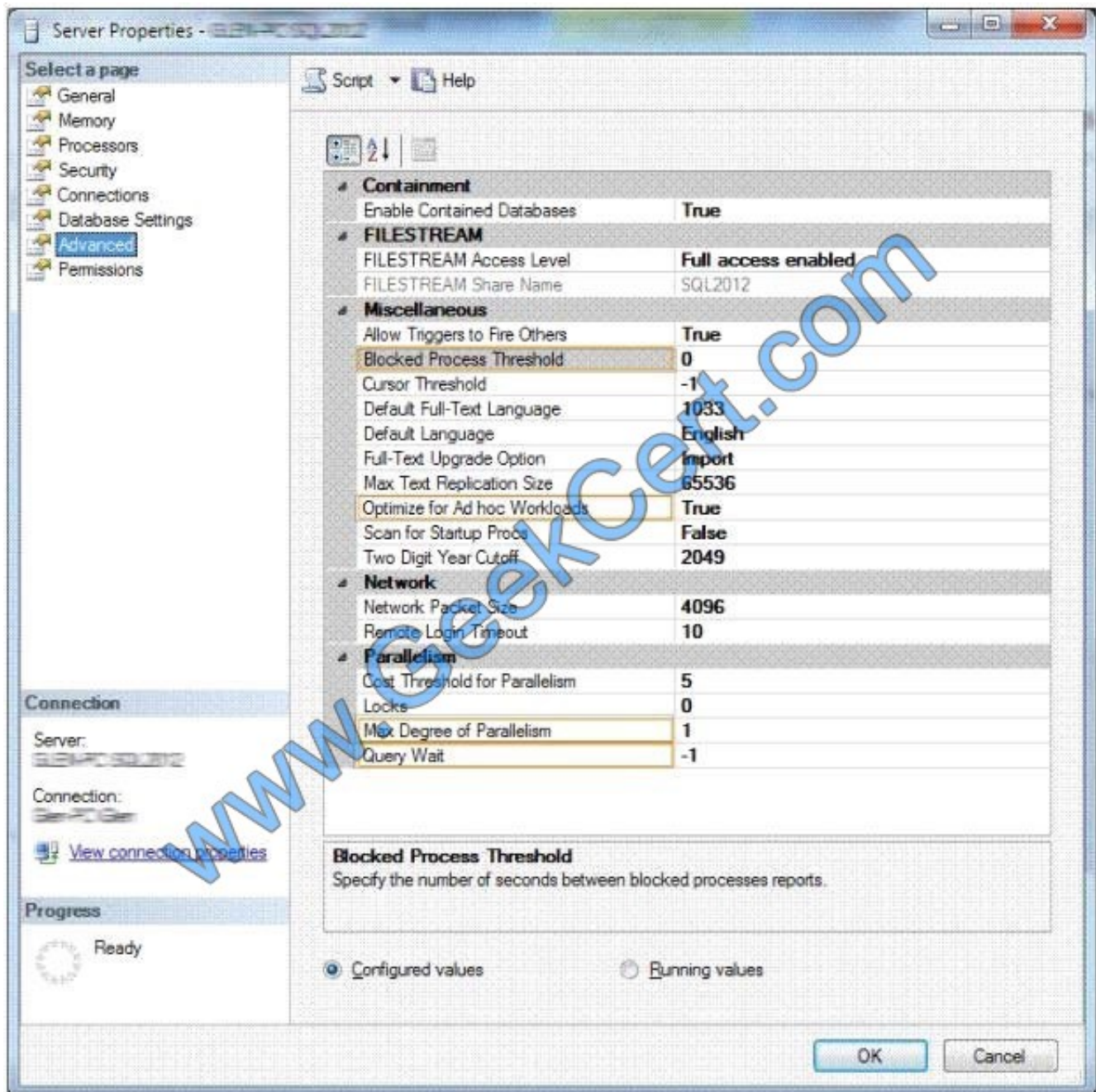


While troubleshooting, you discover that CPU utilization is low (less than 20 percent), disk activity is low (little or no waiting processes), and no significant blocking is occurring.

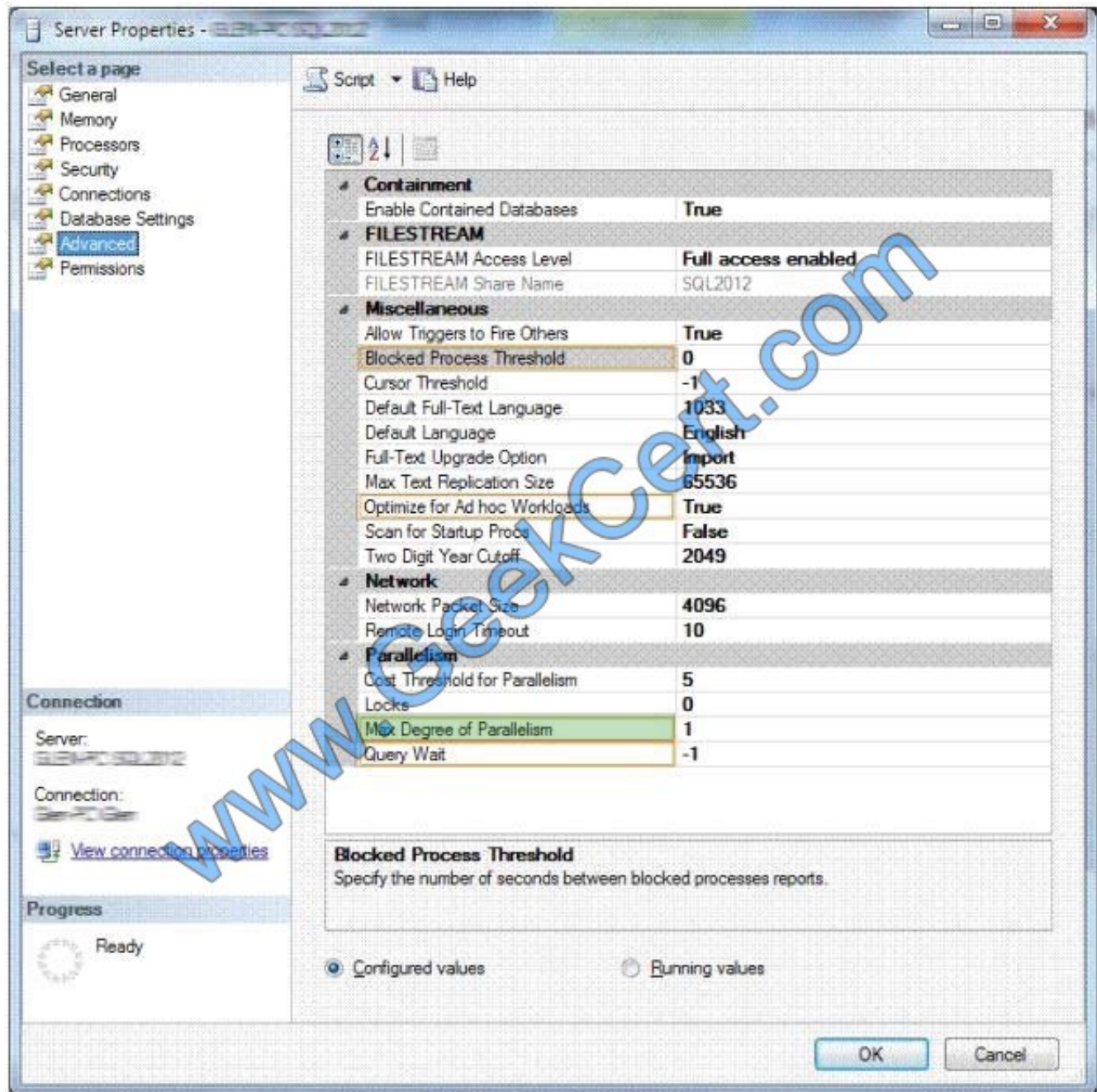
You need to ensure that the instance can process queries as quickly and efficiently as possible.

Which Setting should you configure?

Hot Area:



Correct Answer:

[Latest 70-462 Dumps](#)[70-462 VCE Dumps](#)[70-462 Study Guide](#)



To Read the [Whole Q&As](#), please purchase the [Complete Version](#) from [Our website](#).

Try our product !

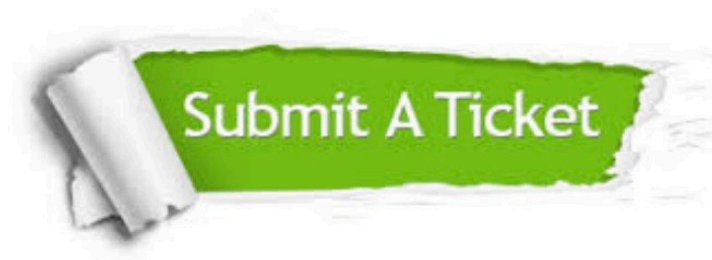
100% Guaranteed Success
100% Money Back Guarantee
365 Days Free Update
Instant Download After Purchase
24x7 Customer Support
Average 99.9% Success Rate
More than 800,000 Satisfied Customers Worldwide
Multi-Platform capabilities - Windows, Mac, Android, iPhone, iPod, iPad, Kindle

We provide exam PDF and VCE of Cisco, Microsoft, IBM, CompTIA, Oracle and other IT Certifications.
You can view Vendor list of All Certification Exams offered:

<https://www.geekcert.com/allproducts>

Need Help

Please provide as much detail as possible so we can best assist you.
To update a previously submitted ticket:



 One Year Free Update Free update is available within One Year after your purchase. After One Year, you will get 50% discounts for updating. And we are proud to boast a 24/7 efficient Customer Support system via Email.	 Money Back Guarantee To ensure that you are spending on quality products, we provide 100% money back guarantee for 30 days from the date of purchase.	 Security & Privacy We respect customer privacy. We use McAfee's security service to provide you with utmost security for your personal information & peace of mind.
---	---	--

Any charges made through this site will appear as Global Simulators Limited.
All trademarks are the property of their respective owners.
Copyright © geekcert, All Rights Reserved.