



# 70-463<sup>Q&As</sup>

Implementing a Data Warehouse with Microsoft SQL Server 2012/2014

## Pass Microsoft 70-463 Exam with 100% Guarantee

Free Download Real Questions & Answers **PDF** and **VCE** file from:

<https://www.geekcert.com/70-463.html>

100% Passing Guarantee  
100% Money Back Assurance

Following Questions and Answers are all new published by Microsoft  
Official Exam Center

-  **Instant Download** After Purchase
-  **100% Money Back** Guarantee
-  **365 Days** Free Update
-  **800,000+** Satisfied Customers





### QUESTION 1

You develop a SQL Server Integration Services (SSIS) package that imports SQL Azure data into a data warehouse every night.

The SQL Azure data contains many misspellings and variations of abbreviations. To import the data, a developer used the Fuzzy Lookup transformation to choose the closest-matching string from a reference table of allowed values. The number of rows in the reference table is very large.

If no acceptable match is found, the Fuzzy Lookup transformation passes a null value.

The current setting for the Fuzzy Lookup similarity threshold is 0.50.

Many values are incorrectly matched.

You need to ensure that more accurate matches are made by the Fuzzy Lookup transformation without degrading performance.

What should you do?

- A. Decrease the maximum number of matches per lookup.
- B. Change the similarity threshold to 0.55.
- C. Change the Exhaustive property to True.
- D. Increase the maximum number of matches per lookup.

Correct Answer: B

References: <http://msdn.microsoft.com/en-us/library/ms137786.aspx>

---

### QUESTION 2

You are reviewing the design of a customer dimension table in an existing data warehouse hosted on SQL Azure.

The current dimension design does not allow the retention of historical changes to customer attributes such as Postcode.

You need to redesign the dimension to enable the full historical reporting of changes to multiple customer attributes including Postcode.

What should you do?

- A. Add StartDate and EndDate columns to the customer dimension.
- B. Add an IsCurrent column to the customer dimension.
- C. Enable Snapshot Isolation on the data warehouse.
- D. Add CurrentValue and PreviousValue columns to the customer dimension.



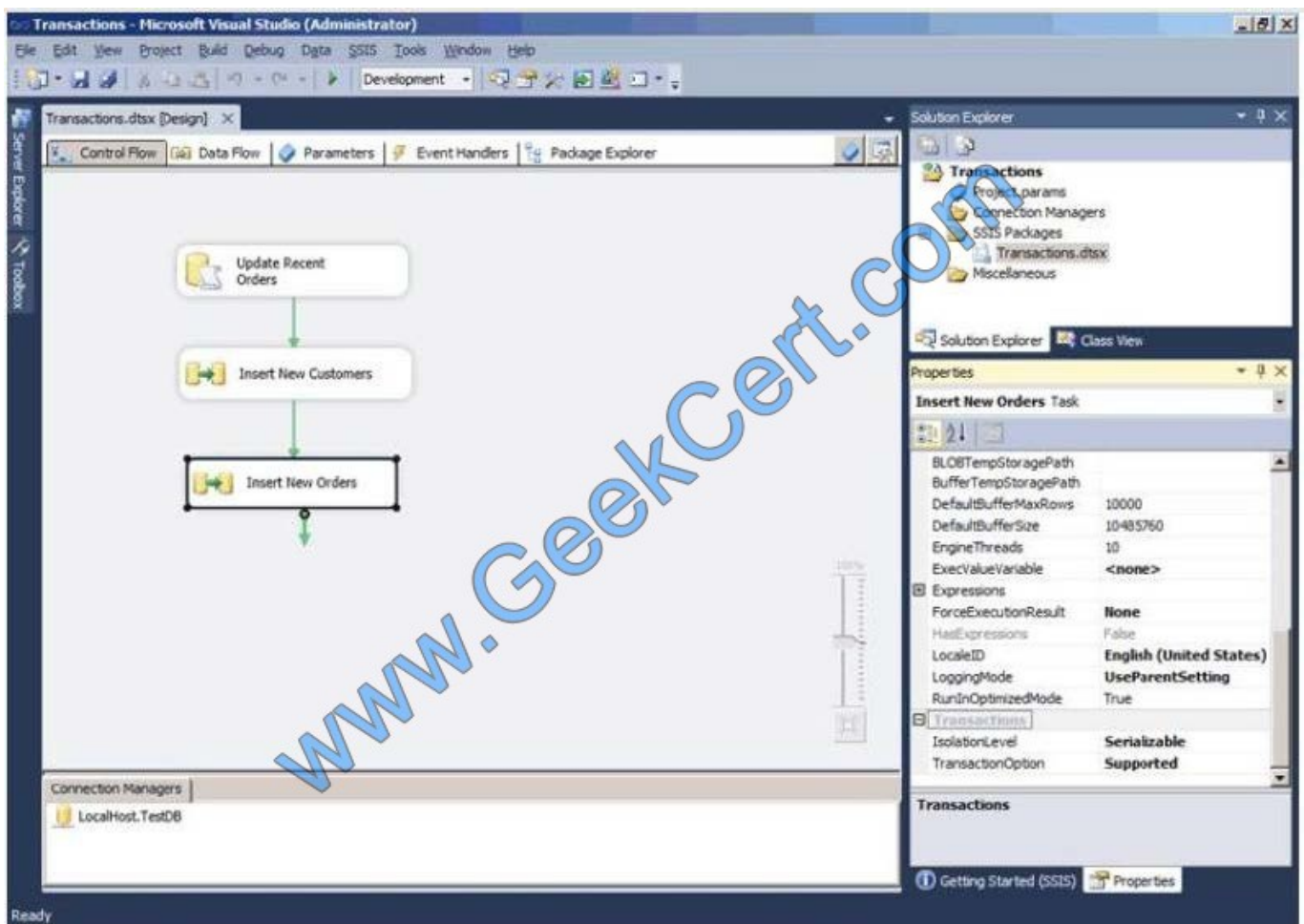
Correct Answer: A

Adding a start and end date will give you this ability as when a record is inserted and given a start and end date, you'll have the ability to determine when they were active therefore giving you a retention of historical changes

### QUESTION 3

You are designing a package control flow. The package moves sales order data from a SQL Azure transactional database to an on-premise reporting database. The package will run several times a day, while new sales orders are being added to the transactional database.

The current design of the package control flow is shown in the answer area.



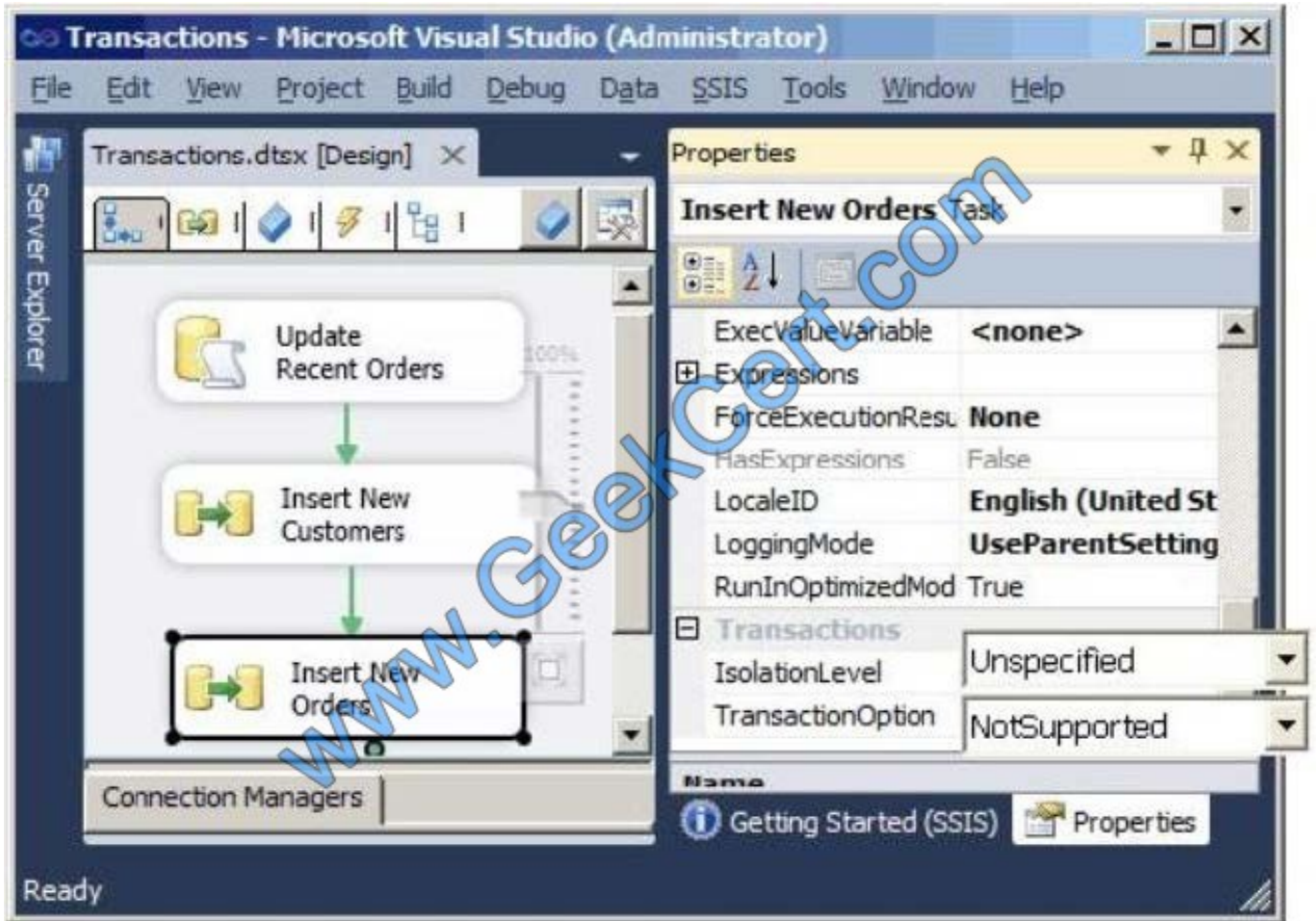
The Insert New Orders Data Flow task must meet the following requirements:

Usage of the tempdb database should not be impacted.

Concurrency should be maximized, while only reading committed transactions.

If the task fails, only that task needs to be rolled back.

You need to configure the Insert New Orders Data Flow task to meet the requirements.



How should you configure the transaction properties?

Correct Answer: IsolationLevel = ReadCommitted TransactionOption = Required

#### QUESTION 4

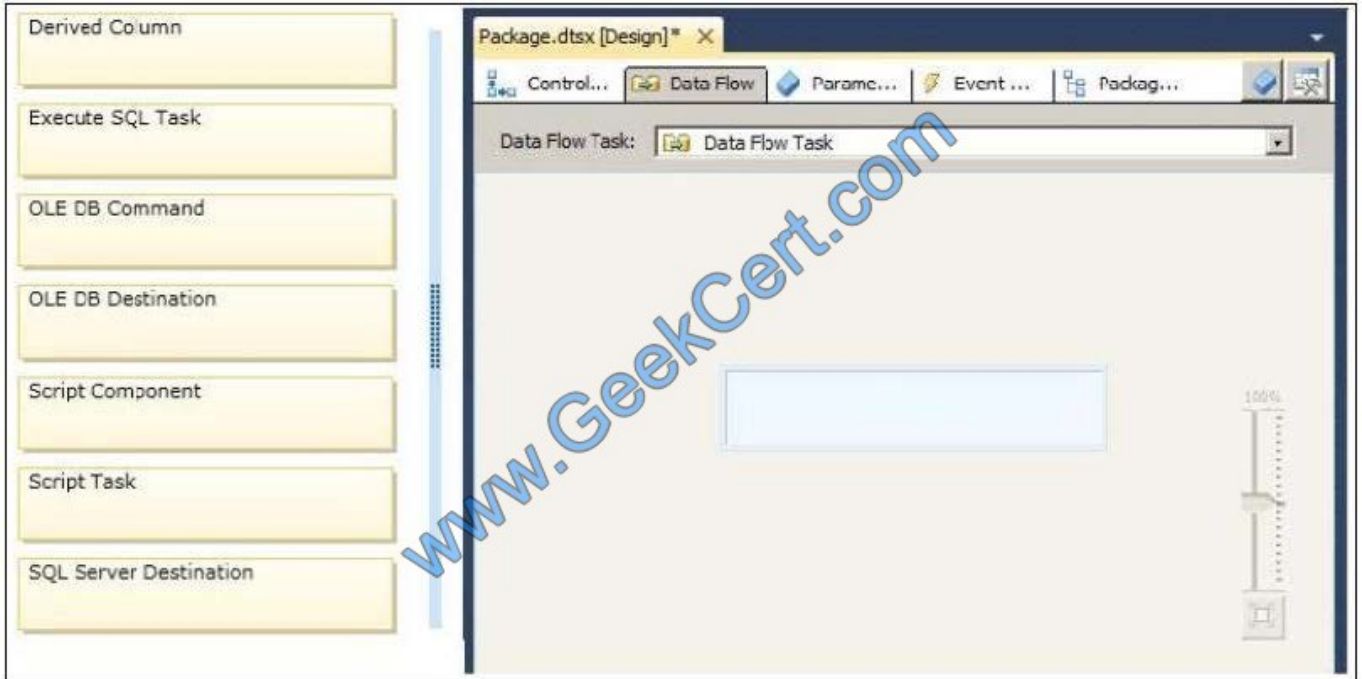
You are developing a SQL Server Integration Services (SSIS) package.

The package uses custom functionality that accesses a SQL Server database. The custom functionality must be implemented by using Language Integrated Query (LINQ).

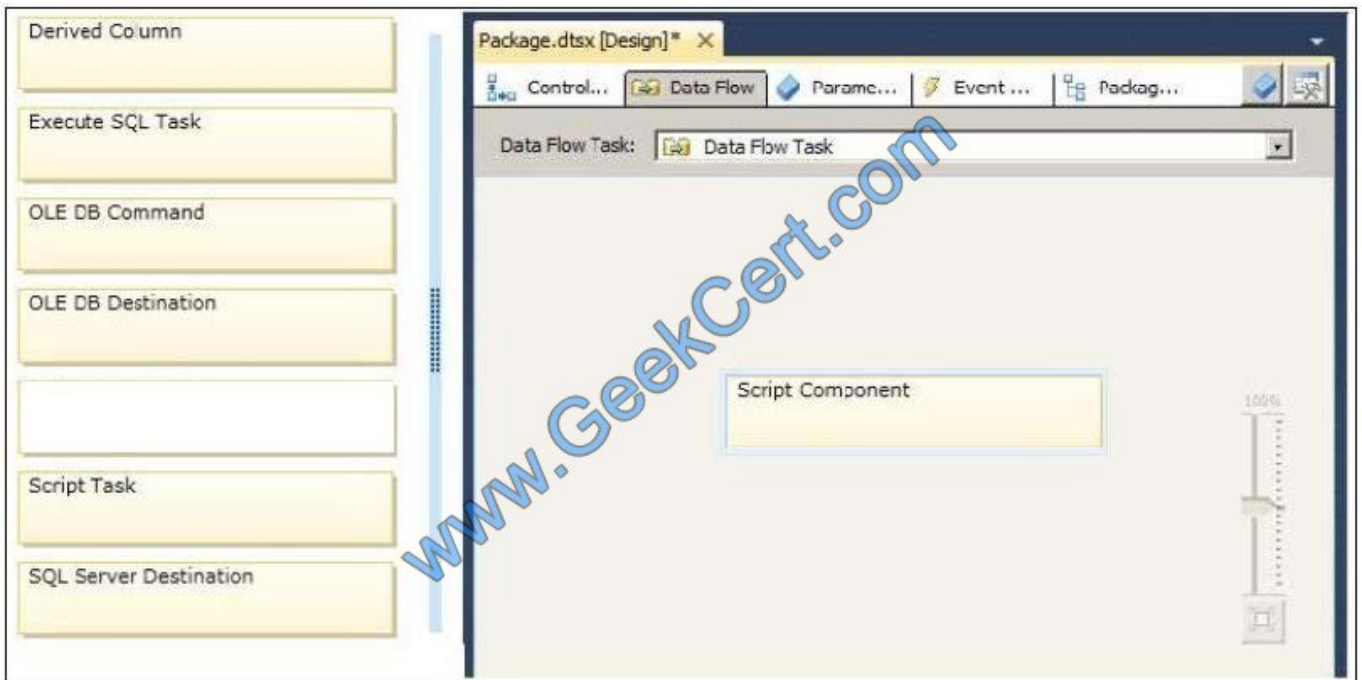
You need to ensure that the LINQ code can be debugged at design time.

What should you select from the SSIS Toolbox? (To answer, drag the appropriate item to the correct location in the answer area.)

Select and Place:



Correct Answer:



### QUESTION 5

You are developing a SQL Server Integration Services (SSIS) package. The package sources data from an HTML web page that lists product stock levels.

You need to implement a data flow task that reads the product stock levels from the HTML web page.



What should you do?

- A. Use an msi file to deploy the package on the server.
- B. Open a command prompt and run the dtutil/copy command.
- C. Add an OnError event handler to the SSIS project.
- D. Open a command prompt and run the gacutil command.

Correct Answer: B

[70-463 PDF Dumps](#)

[70-463 Practice Test](#)

[70-463 Braindumps](#)



To Read the [Whole Q&As](#), please purchase the [Complete Version](#) from [Our website](#).

## Try our product !

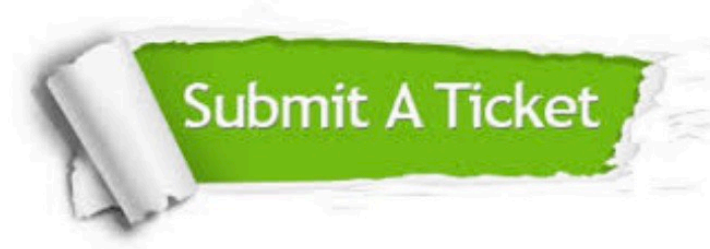
- 100% Guaranteed Success
- 100% Money Back Guarantee
- 365 Days Free Update
- Instant Download After Purchase
- 24x7 Customer Support
- Average 99.9% Success Rate
- More than 800,000 Satisfied Customers Worldwide
- Multi-Platform capabilities - [Windows](#), [Mac](#), [Android](#), [iPhone](#), [iPod](#), [iPad](#), [Kindle](#)

We provide exam PDF and VCE of Cisco, Microsoft, IBM, CompTIA, Oracle and other IT Certifications. You can view Vendor list of All Certification Exams offered:

<https://www.geekcert.com/allproducts>

## Need Help

Please provide as much detail as possible so we can best assist you.  
To update a previously submitted ticket:



|   |   |  |
|---|---|--|
|  <b>One Year Free Update</b> <p>Free update is available within One Year after your purchase. After One Year, you will get 50% discounts for updating. And we are proud to boast a 24/7 efficient Customer Support system via Email.</p> |  <b>Money Back Guarantee</b> <p>To ensure that you are spending on quality products, we provide 100% money back guarantee for 30 days from the date of purchase.</p> |  <b>Security &amp; Privacy</b> <p>We respect customer privacy. We use McAfee's security service to provide you with utmost security for your personal information &amp; peace of mind.</p> |
|---|---|--|

Any charges made through this site will appear as Global Simulators Limited.  
All trademarks are the property of their respective owners.  
Copyright © geekcert, All Rights Reserved.