



70-463^{Q&As}

Implementing a Data Warehouse with Microsoft SQL Server 2012/2014

Pass Microsoft 70-463 Exam with 100% Guarantee

Free Download Real Questions & Answers **PDF** and **VCE** file from:

<https://www.geekcert.com/70-463.html>

100% Passing Guarantee
100% Money Back Assurance

Following Questions and Answers are all new published by Microsoft
Official Exam Center

-  **Instant Download** After Purchase
-  **100% Money Back** Guarantee
-  **365 Days** Free Update
-  **800,000+** Satisfied Customers





QUESTION 1

You are designing an enterprise star schema that will consolidate data from three independent data marts. One of the data marts is hosted on SQL Azure.

Most of the dimensions have the same structure and content. However, the geography dimension is slightly different in each data mart.

You need to design a consolidated dimensional structure that will be easy to maintain while ensuring that all dimensional data from the three original solutions is represented.

What should you do?

- A. Create a junk dimension for the geography dimension.
- B. Implement change data capture.
- C. Create a conformed dimension for the geography dimension.
- D. Create three geography dimensions.

Correct Answer: C

QUESTION 2

You are developing a SQL Server Integration Services (SSIS) package to load data into a SQL Server 2012 database.

The package is allowed to connect to only one database. An Environment variable contains the name of the database.

The OLE DB project connection manager has been parameterized.

You need to configure the connection manager property to accept the value of the Environment variable.

Which property should you use? (To answer, configure the appropriate option or options in the dialog box in the answer area.)



Parameterize - __sql2012

Specify the property to parameterize and the parameter to use. An expression referencing the parameter will be created on the property.

Property:

Do not use parameter

Use existing parameter

Create new parameter

Name:

Description:

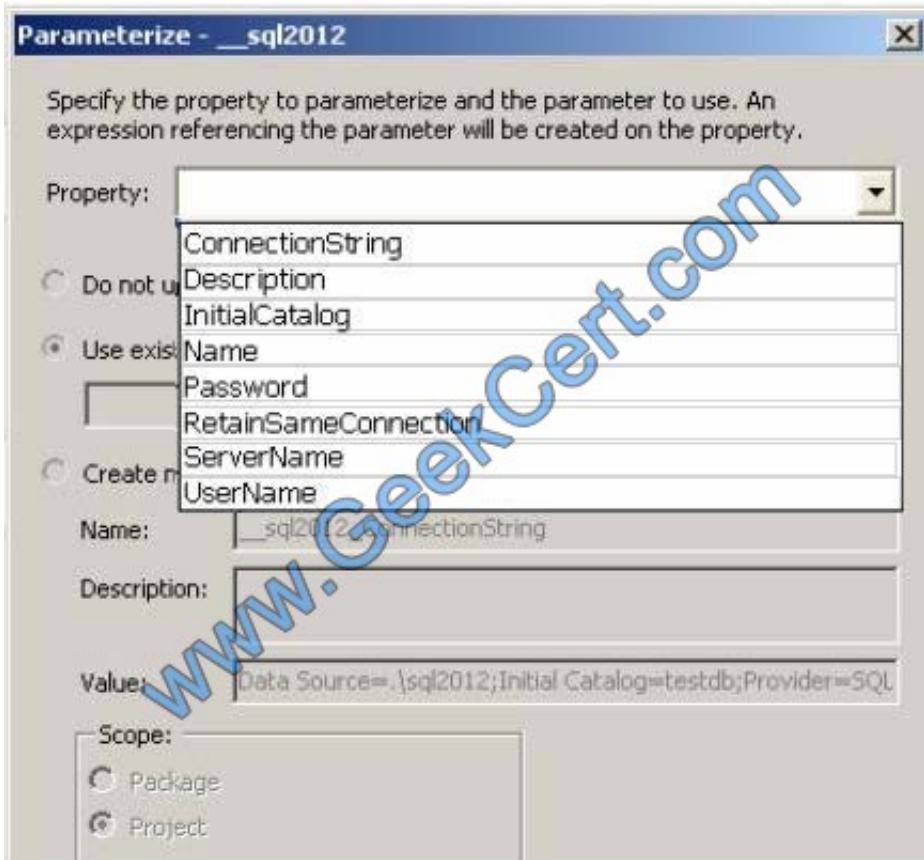
Value:

Scope:

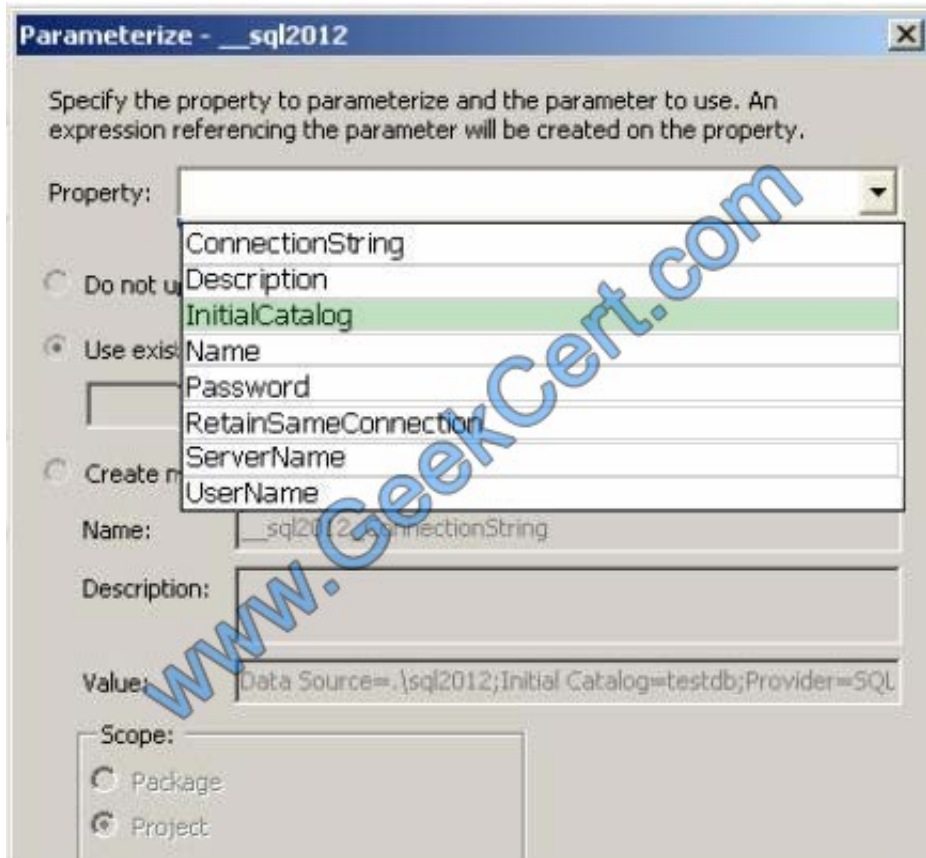
Package

Project

Hot Area:



Correct Answer:



QUESTION 3

You are developing a SQL Server Integration Services (SSIS) project by using the Project Deployment Model.

The project will be deployed to an SSIS catalog folder where Environments have already been created. You need to deploy the project. What should you do?

- A. Use an event handler for OnError for each data flow task.
- B. Use an event handler for OnTaskFailed for the package.
- C. View the job history for the SQL Server Agent job.
- D. View the All Messages subsection of the All Executions report for the package.
- E. Store the System::SourceID variable in the custom log table.
- F. Store the System::ServerExecutionID variable in the custom log table.
- G. Store the System::ExecutionInstanceGUID variable in the custom log table.
- H. Deploy the project by using dtutil.exe with the /COPY DTS option.
- I. Deploy the project by using dtutil.exe with the /COPY SQL option.



J. Deploy the .ispac file by using the Integration Services Deployment Wizard.

K. Create a SQL Server Agent job to execute the SSISDB.catalog.validate_project stored procedure.

L. Create a SQL Server Agent job to execute the SSISDB.catalog.validate_package stored procedure.

Correct Answer: J

QUESTION 4

You are preparing to install SQL Server 2012 Master Data Services (MDS).

You need to ensure that the database requirements are met.

What should you install?

A. Microsoft SharePoint Foundation 2010 SP1

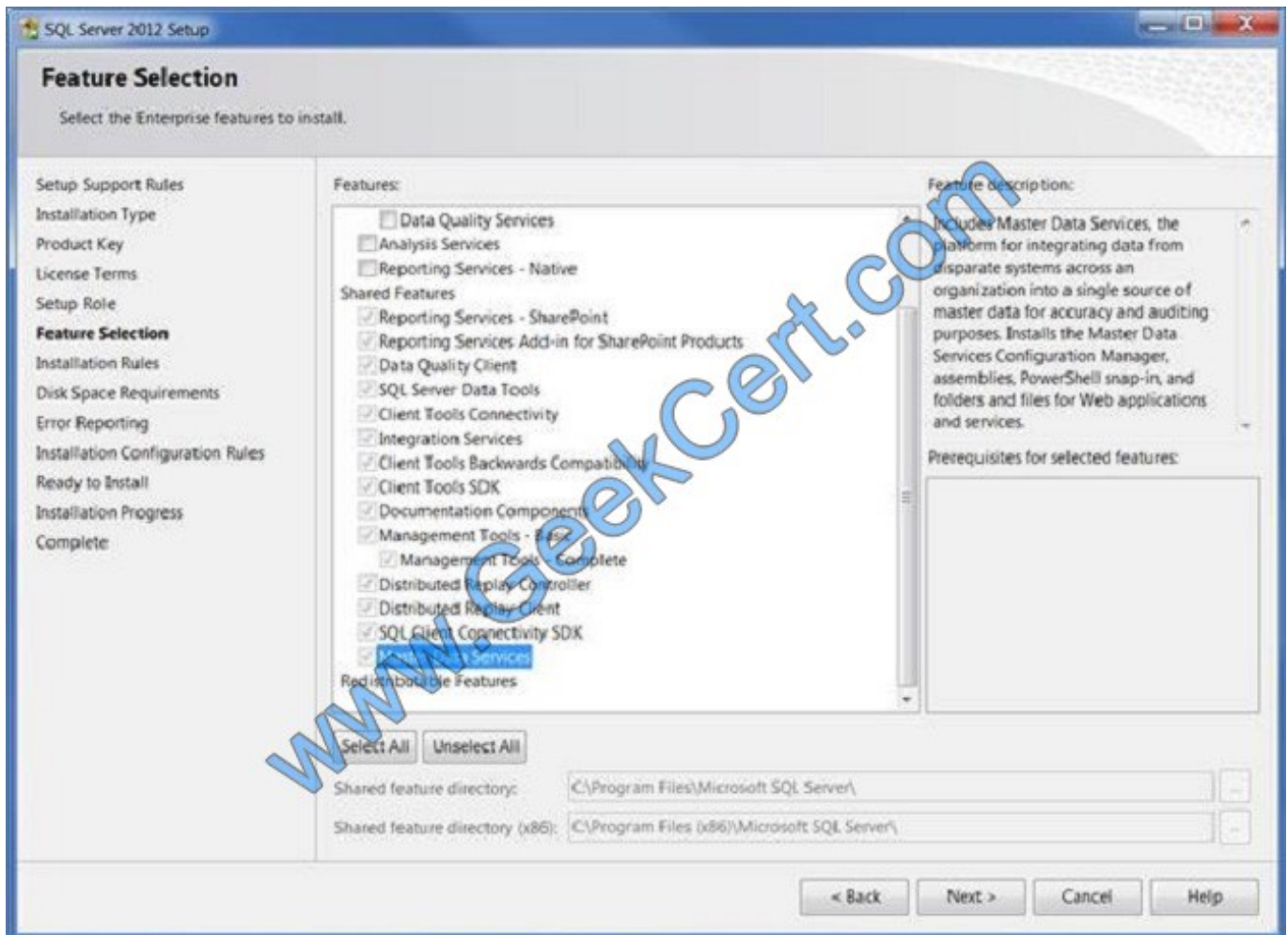
B. SQL Server 2012 Enterprise (64-bit) x64 on the database server

C. SQL Server 2012 Data Center (64-bit) x64 on the database server

D. SQL Server 2008 Enterprise (64-bit) x64 on the database server

Correct Answer: B

Master Data Services is a new feature introduced in SQL Server 2008 R2 and further enhanced in SQL Server 2012. SQL Server 2012 Enterprise features include Master Data Services:



Note:

* Microsoft SQL Server Master Data Services is a Master Data Management (MDM) product from Microsoft, which will ship as a part of the Microsoft SQL Server database. Originally code-named Bulldog, Master Data Services is the rebranding of the Stratature MDM product titled +EDM, which Microsoft acquired in June 2007. Master Data Services is architecturally similar to +EDM, with increased integration with other Microsoft applications as well as some new features. Master Data Services first shipped with Microsoft SQL Server 2008 R2.

QUESTION 5

You are developing a SQL Server Integration Services (SSIS) package that imports data into a data warehouse. You are developing the part of the SSIS package that populates the ProjectDates dimension table. The business key of the ProjectDates table is the ProjectName column. The business user has given you the dimensional attribute behavior for each of the four columns in the ProjectDates table:

ExpectedStartDate - New values should be tracked over time.

ActualStartDate - New values should not be accepted.

ExpectedEndDate - New values should replace existing values.

ActualEndDate - New values should be tracked over time.



You use the SSIS Slowly Changing Dimension Transformation.

You must configure the Change Type value for each source column.

Which settings should you select? (To answer, select the appropriate setting or settings in the answer area. Each Change Type may be used once, more than once, or not at all.)

Select and Place:

Fixed Attribute

Changing Attribute

Historical Attribute

Dimension Columns	Change Type
ExpectedStartDate	
ActualStartDate	
ExpectedEndDate	
ActualEndDate	

Correct Answer:

Fixed Attribute

Changing Attribute

Historical Attribute

Dimension Columns	Change Type
ExpectedStartDate	Historical Attribute
ActualStartDate	Fixed Attribute
ExpectedEndDate	Changing Attribute
ActualEndDate	Historical Attribute



To Read the [Whole Q&As](#), please purchase the [Complete Version](#) from [Our website](#).

Try our product !

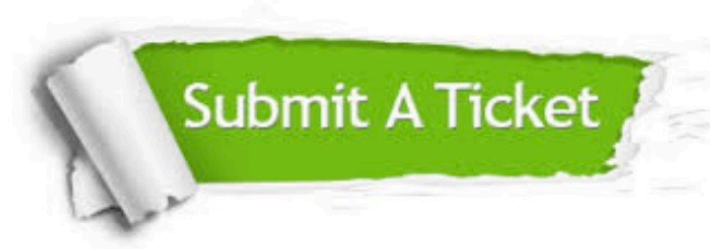
- 100% Guaranteed Success
- 100% Money Back Guarantee
- 365 Days Free Update
- Instant Download After Purchase
- 24x7 Customer Support
- Average 99.9% Success Rate
- More than 800,000 Satisfied Customers Worldwide
- Multi-Platform capabilities - [Windows](#), [Mac](#), [Android](#), [iPhone](#), [iPod](#), [iPad](#), [Kindle](#)

We provide exam PDF and VCE of Cisco, Microsoft, IBM, CompTIA, Oracle and other IT Certifications. You can view Vendor list of All Certification Exams offered:

<https://www.geekcert.com/allproducts>

Need Help

Please provide as much detail as possible so we can best assist you.
To update a previously submitted ticket:



 <p>One Year Free Update Free update is available within One Year after your purchase. After One Year, you will get 50% discounts for updating. And we are proud to boast a 24/7 efficient Customer Support system via Email.</p>	 <p>Money Back Guarantee To ensure that you are spending on quality products, we provide 100% money back guarantee for 30 days from the date of purchase.</p>	 <p>Security & Privacy We respect customer privacy. We use McAfee's security service to provide you with utmost security for your personal information & peace of mind.</p>
---	---	--

Any charges made through this site will appear as Global Simulators Limited.
All trademarks are the property of their respective owners.
Copyright © geekcert, All Rights Reserved.