



# 70-642<sup>Q&As</sup>

TS: Windows Server 2008 Network Infrastructure

## Pass Microsoft 70-642 Exam with 100% Guarantee

Free Download Real Questions & Answers **PDF** and **VCE** file from:

<https://www.geekcert.com/70-642.html>

100% Passing Guarantee  
100% Money Back Assurance

Following Questions and Answers are all new published by Microsoft  
Official Exam Center

-  **Instant Download** After Purchase
-  **100% Money Back** Guarantee
-  **365 Days** Free Update
-  **800,000+** Satisfied Customers



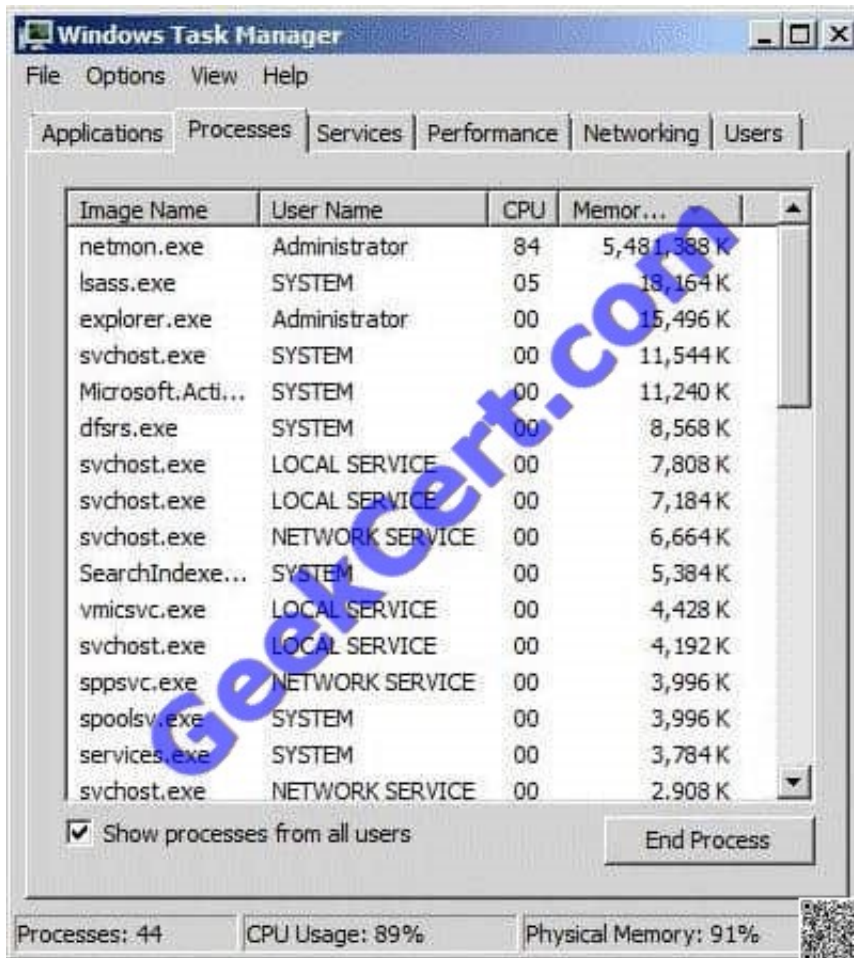


### QUESTION 1

You install Microsoft Network Monitor 3.4 on a server.

You start Network Monitor and you capture data overnight.

The next morning, you discover that the server responds very slowly. You open Task Manager as shown in the exhibit. (Click the Exhibit button.)



You need to reduce the amount of system resources consumed on the server when Network Monitor captures network data. What should you do?

- A. Use Netmon and enable pmode for the network adapter.
- B. Use Netmon with conversations enabled.
- C. Use Nmcap and enable pmode for the network adapter.
- D. Use Nmcap with conversations disabled.

Correct Answer: D



## QUESTION 2

Your network contains a server named DC1 that has the DHCP Server server role installed.

You discover the following warning message in the Event log of DC1: "The DHCP service encountered the following error while cleaning up the database: An error occurred while accessing the DHCP database. Look at the DHCP server event log for more information on this error."

You need to resolve the warning message. What should you do?

- A. Restore the database from a backup.
- B. Increase the database cleanup interval.
- C. Configure Routing Information Protocol version 2 (RIPv2) on the router.
- D. Configure name protection.
- E. Reconcile the scope.
- F. Authorize DC1 in Active Directory.
- G. Configure Open Shortest Path First (OSPF) on the router.
- H. Compact the database.
- I. Configure DHCP link layer-based filtering.
- J. Modify the start address.
- K. Configure a DHCP Relay Agent.

Correct Answer: A

---

## QUESTION 3

Your network contains an Active Directory domain. The domain contains a file server named Server1 that runs Windows Server 2008 R2. You need to ensure that a user named User1 can back up and restore files on Server1. The solution must minimize the number of user rights assigned to User1.

What should you do?

- A. Add User1 to the Server Operators group.
- B. Assign the Backup files and directories user right to User1.
- C. Add User1 to the Backup Operators group.
- D. Assign the Perform volume maintenance tasks user right to User1.

Correct Answer: B

---

## QUESTION 4



Your network contains a server that has the Network Policy Server (NPS) role service installed.

You need to configure a network policy that will apply to wireless clients only.

Which condition should you configure?

- A. NAS port Type
- B. Service Type
- C. MS-Service Class
- D. Framed Protocol
- E. NAS Identifier

Correct Answer: A

#### QUESTION 5

Your network contains a server that runs Windows Server 2008 R2. On the server, you run ipconfig as shown in the exhibit. (Click the Exhibit button.)

```
Administrator: Command Prompt
C:\Users\Administrator>ipconfig

Windows IP Configuration

Ethernet adapter Local Area Connection:

    Connection-specific DNS Suffix  . : 
    Link-local IPv6 Address . . . . . : fe80::541:8b41:a214:99e0%11
    IPv4 Address. . . . .               : 172.23.1.100
    Subnet Mask . . . . .               : 255.255.255.0
    Default Gateway . . . . .          : 172.23.1.1

Tunnel adapter isatap.{30FA11DD-DD7E-4390-B3AC-4534E462F268}:

    Media State . . . . .              : Media disconnected
    Connection-specific DNS Suffix  . : 

Tunnel adapter Ieredo Tunneling Pseudo-Interface:

    Media State . . . . .              : Media disconnected
    Connection-specific DNS Suffix  . : 

C:\Users\Administrator>
```

You need to ensure that the server can access remote TCP/IPv6 hosts.

What should you do?

- A. Disable Internet Protocol Version 4 (TCP/IPv4).
- B. Add a default gateway.
- C. Modify the subnet mask.
- D. Configure an IPv6 address.



Correct Answer: D

[70-642 VCE Dumps](#)

[70-642 Study Guide](#)

[70-642 Exam Questions](#)



To Read the [Whole Q&As](#), please purchase the [Complete Version](#) from [Our website](#).

## Try our product !

- 100% Guaranteed Success
- 100% Money Back Guarantee
- 365 Days Free Update
- Instant Download After Purchase
- 24x7 Customer Support
- Average 99.9% Success Rate
- More than 800,000 Satisfied Customers Worldwide
- Multi-Platform capabilities - [Windows](#), [Mac](#), [Android](#), [iPhone](#), [iPod](#), [iPad](#), [Kindle](#)

We provide exam PDF and VCE of Cisco, Microsoft, IBM, CompTIA, Oracle and other IT Certifications. You can view Vendor list of All Certification Exams offered:

<https://www.geekcert.com/allproducts>

## Need Help

Please provide as much detail as possible so we can best assist you.  
To update a previously submitted ticket:



 <p><b>One Year Free Update</b> Free update is available within One Year after your purchase. After One Year, you will get 50% discounts for updating. And we are proud to boast a 24/7 efficient Customer Support system via Email.</p>	 <p><b>Money Back Guarantee</b> To ensure that you are spending on quality products, we provide 100% money back guarantee for 30 days from the date of purchase.</p>	 <p><b>Security &amp; Privacy</b> We respect customer privacy. We use McAfee's security service to provide you with utmost security for your personal information &amp; peace of mind.</p>
---	---	--

Any charges made through this site will appear as Global Simulators Limited.  
All trademarks are the property of their respective owners.  
Copyright © geekcert, All Rights Reserved.