



70-642^{Q&As}

TS: Windows Server 2008 Network Infrastructure

Pass Microsoft 70-642 Exam with 100% Guarantee

Free Download Real Questions & Answers **PDF** and **VCE** file from:

<https://www.geekcert.com/70-642.html>

100% Passing Guarantee
100% Money Back Assurance

Following Questions and Answers are all new published by Microsoft
Official Exam Center

-  **Instant Download** After Purchase
-  **100% Money Back** Guarantee
-  **365 Days** Free Update
-  **800,000+** Satisfied Customers





QUESTION 1

Your company has a main office and two branch offices. Domain controllers in the main office host an Active Directory-integrated zone.

The DNS servers in the branch offices host a secondary zone for the domain and use the main office DNS servers as the DNS Master servers for the zone.

Each branch office has an application server.

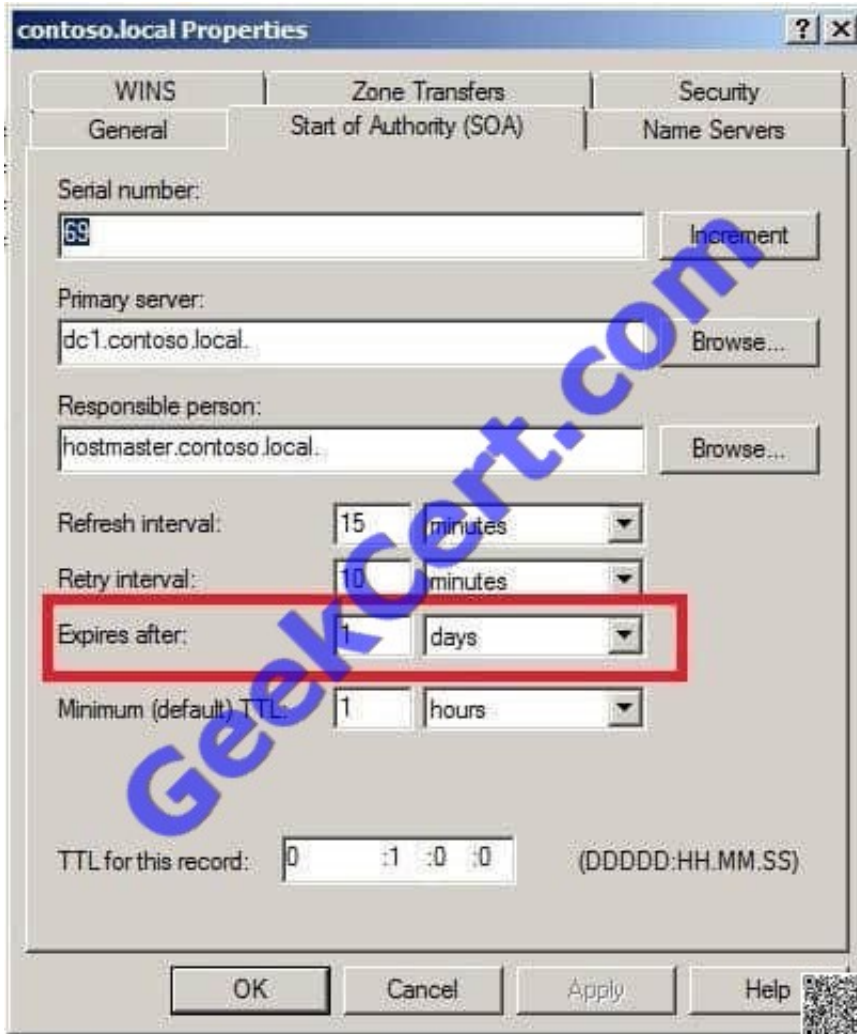
Users access the application server by using its fully qualified domain name.

You need to ensure that users in the branch offices can access their local application server even if the WAN links are down for three days.

What should you do?

- A. Increase the Expires After setting to 4 days on the Start of Authority (SOA) record for the zone.
- B. Increase the Refresh Interval setting to 4 days on the Start of Authority (SOA) record for the zone.
- C. Configure the Zone Aging / Scavenging Properties dialog box to enable Scavenge stale resource records, and set the Refresh setting to 4 days.
- D. Configure the Zone Aging / Scavenging Properties dialog box to enable Scavenge stale resource records, and set the No-refresh interval setting to 4 days.

Correct Answer: A

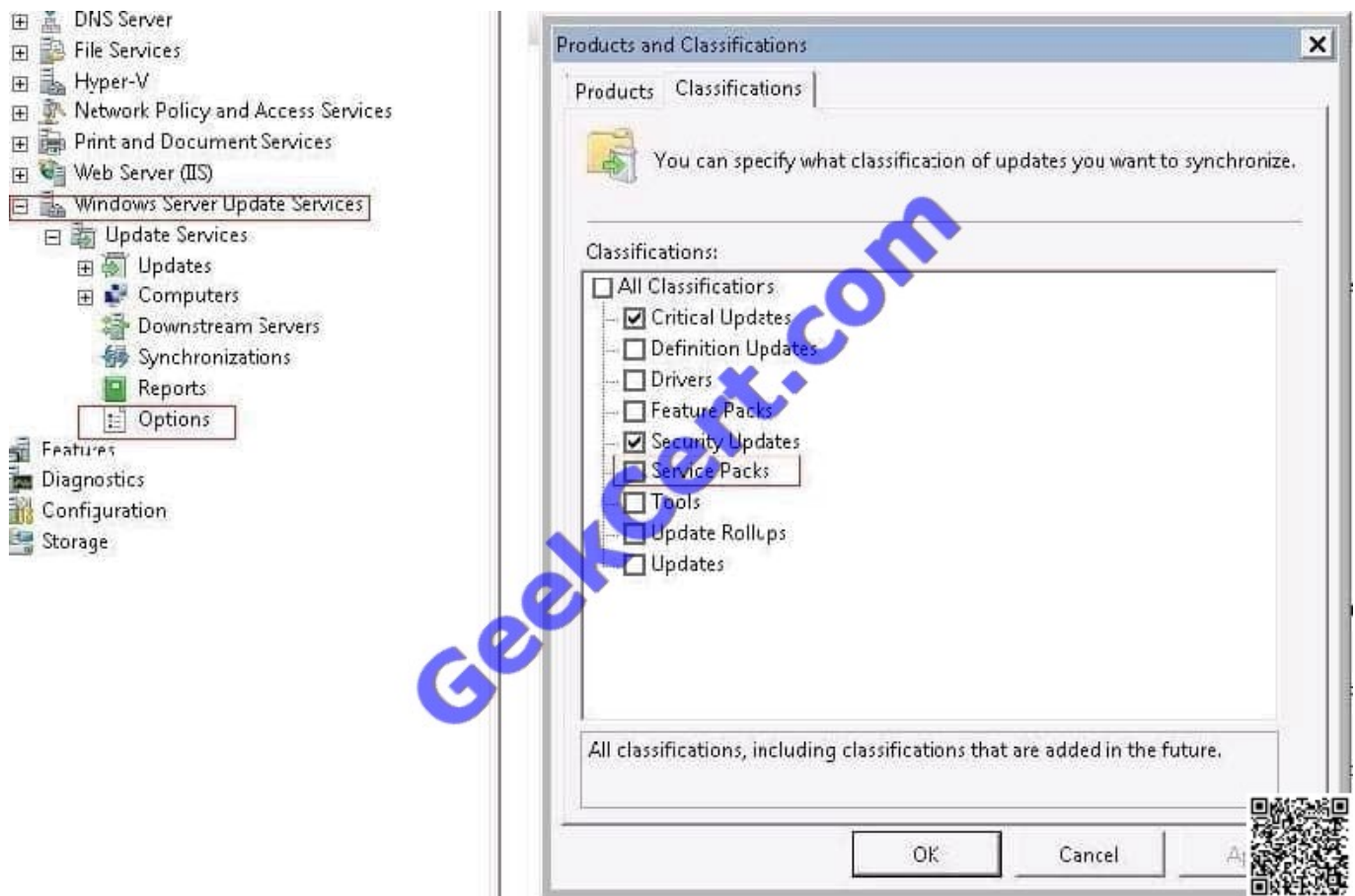


QUESTION 2

Your network contains a Windows Server Update Services (WSUS) server. You need to ensure that the WSUS server automatically downloads service packs. What should you do first?

- A. From the Automatic Approvals options, modify the Update Rules list.
- B. From the Automatic Approvals options, modify the Advanced settings.
- C. From the Products and Classifications options, modify the Products settings.
- D. From the Products and Classifications options, modify the Classifications settings.

Correct Answer: D



QUESTION 3

Your network contains a server named Server1 that runs Windows Server 2008 R2 Service Pack (SP1).

All users have laptops that run Windows 7. The users frequently work from network locations that only allow outbound communication to the Internet by using HTTP and HTTPS.

You plan to configure Server1 as a VPN server.

You need to identify which VPN protocol you should use to ensure that all of the users can establish VPN connections to Server1.

Which VPN protocol should you identify?

- A. PPTP
- B. SSTP
- C. L2TP
- D. IKEv2

Correct Answer: B



QUESTION 4

Your network contains a server named Server1 that runs Windows Server 2008 R2. You have a user named User1.

You need to ensure that User1 can view the events in the Security event log. The solution must minimize the number of rights assigned to User1. What should you do?

- A. In Event Viewer, filter the Security log.
- B. In Event Viewer, configure the properties of the Security log.
- C. In the Local Security Policy console, modify the Security Options.
- D. In the Registry Editor, add a Security Descriptor Definition Language (SDDL) value.

Correct Answer: D

The Security Descriptor for each log is specified by using Security Descriptor Definition Language (SDDL) syntax. For more information about SDDL syntax, see the Platform SDK, or visit the Microsoft Web site mentioned in the "References"

section of this article. To construct an SDDL string, note that there are three distinct rights that pertain to event logs:

Read, Write, and Clear. These rights correspond to the following bits in the access rights field of the ACE string:

1 = Read

2 = Write

4 = Clear

Read more here:

<http://support.microsoft.com/kb/323076>

QUESTION 5

Your network contains an Active Directory domain. The domain contains several VPN servers that run Windows Server 2008 R2. You need to log the time and the date users establish VPN connections to the network. The log must be stored in a central location. What should you configure on the VPN servers?

- A. the Windows Accounting accounting provider
- B. connection request policies
- C. health policies
- D. the RADIUS Accounting accounting provider

Correct Answer: D

RADIUS accounting logs information about dial-in connections. This information is often used for billing purposes.



[70-642 VCE Dumps](#)

[70-642 Study Guide](#)

[70-642 Braindumps](#)



To Read the [Whole Q&As](#), please purchase the [Complete Version](#) from [Our website](#).

Try our product !

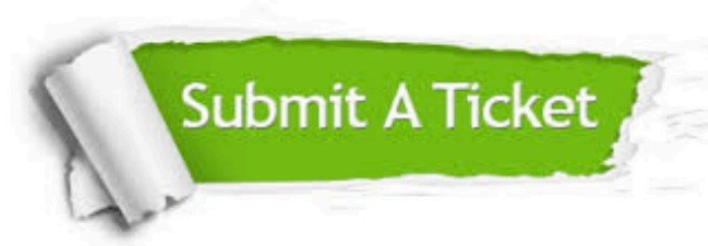
100% Guaranteed Success
100% Money Back Guarantee
365 Days Free Update
Instant Download After Purchase
24x7 Customer Support
Average 99.9% Success Rate
More than 800,000 Satisfied Customers Worldwide
Multi-Platform capabilities - [Windows](#), [Mac](#), [Android](#), [iPhone](#), [iPod](#), [iPad](#), [Kindle](#)

We provide exam PDF and VCE of Cisco, Microsoft, IBM, CompTIA, Oracle and other IT Certifications.
You can view Vendor list of All Certification Exams offered:

<https://www.geekcert.com/allproducts>

Need Help

Please provide as much detail as possible so we can best assist you.
To update a previously submitted ticket:



 <p>One Year Free Update Free update is available within One Year after your purchase. After One Year, you will get 50% discounts for updating. And we are proud to boast a 24/7 efficient Customer Support system via Email.</p>	 <p>Money Back Guarantee To ensure that you are spending on quality products, we provide 100% money back guarantee for 30 days from the date of purchase.</p>	 <p>Security & Privacy We respect customer privacy. We use McAfee's security service to provide you with utmost security for your personal information & peace of mind.</p>
---	---	--

Any charges made through this site will appear as Global Simulators Limited.
All trademarks are the property of their respective owners.
Copyright © geekcert, All Rights Reserved.