



70-646^{Q&As}

Pro: Windows Server 2008

Pass Microsoft 70-646 Exam with 100% Guarantee

Free Download Real Questions & Answers **PDF** and **VCE** file from:

<https://www.geekcert.com/70-646.html>

100% Passing Guarantee
100% Money Back Assurance

Following Questions and Answers are all new published by Microsoft
Official Exam Center

-  **Instant Download** After Purchase
-  **100% Money Back** Guarantee
-  **365 Days** Free Update
-  **800,000+** Satisfied Customers





QUESTION 1

As part of a Windows Server 2008 R2 Active Directory deployment, you are designing a Group Policy object (GPO) hierarchy. Client computers run Windows 7 and Windows XP. All client computers are in an organizational unit (OU) named

Client Computers.

Additional Windows 7 and Windows XP client computers will be joined to the domain over the next six months.

You have the following requirements:

-Install the antivirus Application on all Windows XP computers.

-

Do not install the antivirus Application on the Windows 7 computers.

-

Do not make changes to the existing Active Directory logical structure.

You need to design a Group Policy strategy that meets the requirements.

Which GPO configuration should you recommend? (More than one answer choice may achieve the goal. Select the BEST answer.)

A.

Publish the antivirus application to client computers. Link the GPO to the domain. Use security filtering to prevent the Windows 7 client computers from receiving the GPO.

B.

Assign the antivirus application to client computers. Link the GPO to the Client Computers OU. Create a WMI Filter that queries whether the client computer's Win32_OperatingSystem caption contains "Windows 7" . Associate the WMI filter with the GPO.

C.

Assign the antivirus application to client computers. Link the GPO to the domain. Place all the Windows 7 computers in a security group. Use security filtering to prevent the Windows 7 client computers from receiving the GPO.

D.

Assign the antivirus application to client computers. Link the GPO to the Client Computers OU. Create a WMI Filter that queries whether the client computer's Win32_OperatingSystem caption contains "Windows XP" . Associate the WMI Filter with the GPO.

Correct Answer: D

<http://technet.microsoft.com/en-us/library/cc947846%28v=ws.10%29.aspx> and
http://technet.microsoft.com/enus/library/cc947846%28v=ws.10%29.aspx#bkmk_1

Depending on which OS you're asked to install the AV app on your answer could change. There are reports that



you're now being asked to install the AV on the Win7 clients. if that is the case then you would select the Windows 7 option.

QUESTION 2

Your network consists of a single Active Directory domain. The network contains two Windows Server 2008 R2 computers named Server1 and Server2. The company has two identical print devices. You plan to deploy print services. You need to plan a print services infrastructure to meet the following requirements:

-Manage the print queue from a central location.

-

Make the print services available, even if one of the print devices fails. What should you include in your plan?

A.

Install and share a printer on Server1. Enable printer pooling.

B.

Install the Remote Desktop Services server role on both servers. Configure Remote Desktop Connection Broker (RD Connection Broker).

C.

Install and share a printer on Server1. Install and share a printer on Server2. Use Print Management to install the printers on the client computers.

D.

Add Server1 and Server2 to a Network Load Balancing cluster. Install a printer on each node of the cluster.

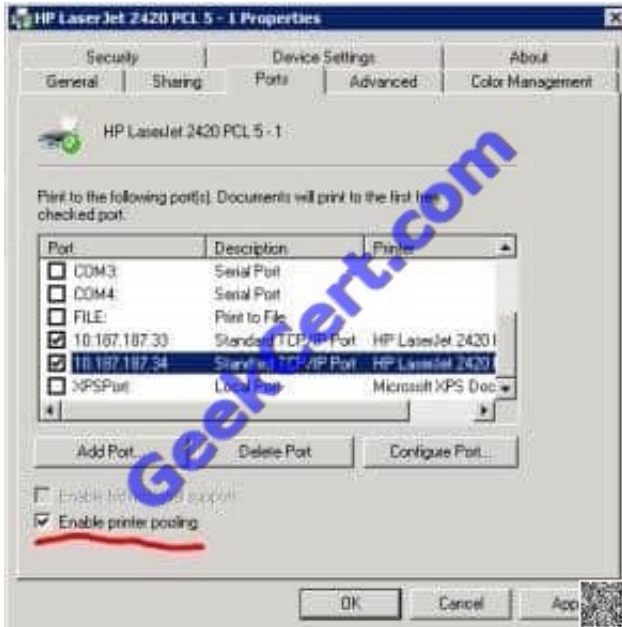
Correct Answer: A

<http://www.techrepublic.com/blog/datacenter/configure-printer-pooling-in-windows-server-2008/964>

Managing printers can be the bane of a Windows administrator. One feature that may assist you with this task is the Windows printer pooling feature. Windows Server 2008 offers functionality that permits a collection of multiple like-configured printers to distribute the print workload.

Printer pooling makes one share that clients print to, and the jobs are sent to the first available printer. Configuring print pooling is rather straightforward in the Windows printer configuration applet of the Control Panel. Figure A shows two like-modeled printers being pooled.

To use pooling, the printer models need to be the same so that the driver configuration is transparent to the end device; this can also help control costs of toner and other supplies. But plan accordingly -- you don't want users essentially running track to look for their print jobs on every printer in the office.



QUESTION 3

You need to remove Marc\\s delegated rights.

What would you recommend?

- A. Use the Delegation of Control Wizard.
- B. Run the Resultant Set of Policy (RSOP) tool.
- C. Run the dscls command-line utility.
- D. Run the xcalcs command-line utility.

Correct Answer: C

<http://support.microsoft.com/kb/281146>

DSACLS is used to View or Edit ACLs (access control entries) for objects in Active Directory.

Overview of Dsacls.exe

DsAcls uses the following syntax:

```
dscls object [/a] [/d {user | group}:permissions [...] [/g {user | group}:permissions [...] [/i:{p | s | t}]/n] [/p:{y | n}]/r {user | group} [...] [/s [/t]]
```

You can use the following parameters with Dsacls.exe:

object: This is the path to the directory services object on which to display or change the ACLs.

This path must be a distinguished name (also known as RFC 1779 or x.500 format). For example:

CN=Someone,OU=Software,OU=Engineering,DC=Microsoft,DC=Com



To specify a server, add \\Servername\ before the object. For example:

```
\\MyServer\CN=Someone,OU=Software,OU=Engineering,DC=Microsoft,DC=Com
```

When you run the dscls command with only the object parameter (dscls object), the security information about the object is displayed.

/a : Use this parameter to display the ownership and auditing information with the permissions. /d{user | group}:permissions: Use this parameter to deny specified permissions to a user or group.

User must use either user@domain or domain\user format, and group must use either group@domain or domain\group format. You can specify more than one user or group in a

command. For more information about the correct syntax to use for permissions, see the rmissions> Syntax section later in this article.

/g {user | group}:permissions: Use this parameter to grant specified permissions to a user or ust use either user@domain or domain\user format, and group must use either

group@domain or domain \group format. You can specify more than one user or group in a command. For more information about the correct syntax to use for permissions, see the

Syntax section later in this article.

/i:{p | s | t} : Use this parameter to specify one of the following inheritance flags:

p: Use this option to propagate inheritable permissions one level only.

s: Use this option to propagate inheritable permissions to subobjects only.

t: Use this option to propagate inheritable permissions to this object and subobjects.

/n : Use this parameter to replace the current access on the object, instead of editing it.

/p:{y | n}: This parameter determines whether the object can inherit permissions from its parent objects. If you omit this parameter, the inheritance properties of the object are not changed. Use this parameter to mark the object as protected (y

= yes) or not protected (n = no).

Note This parameter changes a property of the object, not of an Access Control Entry (ACE). To determine whether an ACE is inheritable, use the /I parameter.

/r {user | group}: Use this parameter to remove all permissions for the specified user or group. You can specify more than one user or group in a command. User must use either user@domain or domain\user format, and group must use

either group@domain or domain\group format.

/s: Use this parameter to restore the security on the object to the default security for that object class, as defined in the Active Directory schema.

/t : Use this parameter to restore the security on the tree of objects to the default for each object class. This switch is valid only when you also use the /s parameter.

QUESTION 4



You need to recommend a solution for the new VMs that supports the company's planned changes. What should you recommend doing before the new VMs are deployed?

- A. Purchase one additional Enterprise license.
- B. Purchase two additional Enterprise licenses.
- C. Deploy an additional physical server that runs Microsoft HyperV Server 2008 R2.
- D. Deploy an additional physical server that runs Windows Server 2008 R2 Enterprise.

Correct Answer: A

Best I could come up with was the following:

Enterprise release includes the license for 4 virtual servers on one physical Server if that physical server is only running hyper V. as it stands the existing server has only 3 VMs leaving on license free, you need a total of 5 VMs running concurrently so you can utilize the one spare that you have.

QUESTION 5

Your network consists of a single Active Directory domain. All domain controllers run Windows

Server 2008 R2. All servers run Windows Server 2008 R2. All client computers run Windows 7.

You need to generate a monthly report on the status of software updates for the client computers.

Your solution must meet the following requirements:

-
- Display all of the operating system updates that installed successfully
-
- Display all of the Microsoft Application updates that installed successfully
-
- Display all of the operating system updates that failed to install
-
- Display all of the Microsoft Application updates that failed to install
-
- Minimize administrative effort
-
- Minimize costs

What should you do?



- A. Install Microsoft System Center Essentials (Essentials) 2007. Deploy management agents on all client computers.
- B. Install Microsoft System Center Configuration Manager (SysMgr) 2007. Deploy management agents on all client computers.
- C. Install Windows Server Update Services (WSUS) 3.0 SP2. Configure Windows Update by using a Group Policy object (GPO).
- D. Deploy Microsoft Baseline Security Analyzer (MBSA) 2.1 on the client computers. Run MBSA on each client computer, and save the report to a shared folder on the network.

Correct Answer: C

<http://technet.microsoft.com/en-us/library/dd939886%28WS.10%29.aspx> What's new in this release?

Integration with Windows Server 2008 R2

Support for the BranchCache feature in Windows Server 2008 R2

Support for Windows 7 client computers New features

Automatic approval rules include the ability to specify the approval deadline date and time for all computers or for specific computer groups.

Improved handling of language selection for downstream servers includes a new warning dialog that appears when you decide to download updates only for specified languages.

New Update and Computer Status reports let you filter updates that are approved for installation.

You can run these reports from the WSUS administration console or use the application programming interface (API) to incorporate this functionality into your own reports.

Windows Update Agent improvements

Client computer scan time is faster than previous versions.

Computers that are managed by WSUS servers can now run "scoped" scans against those servers, instead of performing a full scan. This results in faster scans for applications that use Microsoft Update APIs such as Windows Defender.

User experience improvements help users organize updates and provide greater clarity on update value and behavior.

Imaged computers are more clearly displayed in the WSUS administration console.

For more information, see article 903262 in the Microsoft Knowledge Base.

Prevents APIs that are called by non-local system callers in a non-interactive session from failing.

Prevents error code 0x80070057 when you try to install 80 or more updates at the same time from the Windows Update Web page or from the Microsoft Update Web page.

Improves scan times for Windows Update

Improves the speed at which signature updates are delivered

Enables support for Windows Installer reinstallation functionality



Improves error messaging

[Latest 70-646 Dumps](#)

[70-646 VCE Dumps](#)

[70-646 Study Guide](#)



To Read the [Whole Q&As](#), please purchase the [Complete Version](#) from [Our website](#).

Try our product !

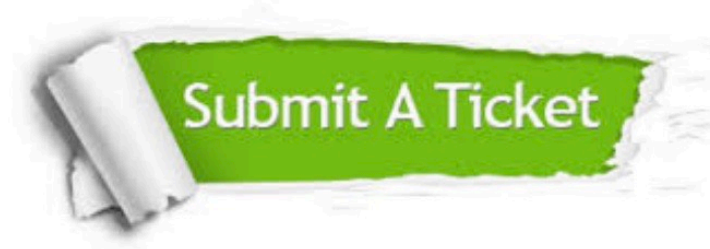
- 100% Guaranteed Success
- 100% Money Back Guarantee
- 365 Days Free Update
- Instant Download After Purchase
- 24x7 Customer Support
- Average 99.9% Success Rate
- More than 800,000 Satisfied Customers Worldwide
- Multi-Platform capabilities - [Windows](#), [Mac](#), [Android](#), [iPhone](#), [iPod](#), [iPad](#), [Kindle](#)

We provide exam PDF and VCE of Cisco, Microsoft, IBM, CompTIA, Oracle and other IT Certifications. You can view Vendor list of All Certification Exams offered:

<https://www.geekcert.com/allproducts>

Need Help

Please provide as much detail as possible so we can best assist you.
To update a previously submitted ticket:



 <p>One Year Free Update Free update is available within One Year after your purchase. After One Year, you will get 50% discounts for updating. And we are proud to boast a 24/7 efficient Customer Support system via Email.</p>	 <p>Money Back Guarantee To ensure that you are spending on quality products, we provide 100% money back guarantee for 30 days from the date of purchase.</p>	 <p>Security & Privacy We respect customer privacy. We use McAfee's security service to provide you with utmost security for your personal information & peace of mind.</p>
---	---	--

Any charges made through this site will appear as Global Simulators Limited.
All trademarks are the property of their respective owners.
Copyright © geekcert, All Rights Reserved.