



70-646^{Q&As}

Pro: Windows Server 2008

Pass Microsoft 70-646 Exam with 100% Guarantee

Free Download Real Questions & Answers **PDF** and **VCE** file from:

<https://www.geekcert.com/70-646.html>

100% Passing Guarantee
100% Money Back Assurance

Following Questions and Answers are all new published by Microsoft
Official Exam Center

-  **Instant Download** After Purchase
-  **100% Money Back** Guarantee
-  **365 Days** Free Update
-  **800,000+** Satisfied Customers





QUESTION 1

You need to recommend a VHD configuration for the virtual desktop pool VMs. What should you include in the recommendation?

- A. differencing VHDs
- B. dynamically expanding VHDs
- C. fixed-size VHDs
- D. passthrough disks

Correct Answer: B

<http://technet.microsoft.com/en-us/library/dd440865%28WS.10%29.aspx#dynamic>

When is it appropriate to use dynamically expanding VHDs?

Dynamically expanding VHDs are useful in nonproduction environments where flexible storage requirements and frequently changing the VHD image is more of an advantage than the reliability of the data within the VHD. In addition,

dynamically expanding VHDs are best for testing environments because there is less impact if you have to rebuild the VHD. For example, a test environment can use multiple dynamically expanding VHDs, each with a different Windows

image and set of applications to test. If the VHD files are modified during testing or accidentally become corrupt, you can replace the VHDs from a safe copy and restart testing.

Using dynamically expanding VHDs in a test environment provides the following benefits:

Flexible use of disk space. You can use free space for the VHD to expand during native VHD boot.

This space would have been unavailable if the volume hosted multiple VHDs in a fixed format.

Faster transfer time when copying VHDs between locations. The file size for a dynamically expanding VHD that is not using its maximum capacity, will transfer in less time between a

network share and a local disk than a fixed VHD of equivalent maximum size. Although rare, you may consider using dynamically expanding VHDs in production environments if

1) all of the content of the dynamically expanding VHD can be regenerated from other sources and critical data is stored on volumes outside the dynamically expanding VHD.

QUESTION 2

Your network consists of a single Active Directory domain. All domain controllers run Windows Server 2008 R2. The network contains 100 servers and 5,000 client computers. The client computers run either Windows XP Service Pack 1 or Windows 7.

You need to plan a VPN solution that meets the following requirements:

-Stores VPN passwords as encrypted text



- Supports Suite B cryptographic algorithms
- Supports automatic enrollment of certificates
- Supports client computers that are configured as members of a workgroup

What should you include in your plan?

- A. Upgrade the client computers to Windows XP Service Pack 3. Implement a standalone certification authority (CA). Implement an IPsec VPN that uses certificate based authentication.
- B. Upgrade the client computers to Windows XP Service Pack 3. Implement an enterprise certification authority (CA) that is based on Windows Server 2008 R2. Implement an IPsec VPN that uses Kerberos authentication.
- C. Upgrade the client computers to Windows 7. Implement an enterprise certification authority (CA) that is based on Windows Server 2008 R2. Implement an IPsec VPN that uses preshared keys.
- D. Upgrade the client computers to Windows 7. Implement an enterprise certification authority (CA) that is based on Windows Server 2008 R2. Implement an IPsec VPN that uses certificate based authentication.

Correct Answer: D

This is as close as I could get to an answer to this.

In essence, Enterprise CAs are fully integrated into a Windows Server 2008 environment. This type of CA makes the issuing and management of certificates for Active Directory clients as simple as possible.

Standalone CAs do not require Active Directory. When certificate requests are submitted to Standalone CAs, the requestor must provide all relevant identifying information and manually

specify the type of certificate needed. This process occurs automatically with an Enterprise CA. By default, Standalone CA requests require administrator approval. Administrator intervention is necessary because there is no automated method of verifying a requestor's credentials.

Standalone CAs do not use certificate templates, limiting the ability for administrators to customize certificates for specific organizational needs.

L2TP/IPsec L2TP connections use encryption provided by IPsec. L2TP/IPsec is the protocol that you need to deploy if you are supporting Windows XP remote access clients, because these clients cannot use SSTP. L2TP/IPsec provides per-packet data origin authentication, data integrity, replay protection, and data confidentiality.

L2TP/IPsec connections use two levels of authentication. Computer-level authentication occurs either using digital certificates issued by a CA trusted by the client and VPN server or through the deployment of pre-shared keys. PPP authentication protocols are then used for user-level authentication. L2TP/IPsec supports all of the VPN authentication protocols available on Windows Server 2008.

Supports Suite B cryptographic algorithms When using the Certificate Templates console, note that you cannot configure the autoenrollment permission for a level 1 certificate template. Level 1 certificates have Windows 2000 as their minimum supported CA. Level 2 certificate templates have Windows Server 2003 as a minimum supported CA. Level 2 certificate templates are also the minimum level of certificate template that supports autoenrollment. Level 3 certificate templates are supported only by client computers running Windows Server 2008 or Windows Vista. Level 3 certificate templates allow administrators to configure advanced Suite B cryptographic settings. These settings are not required to allow certificate autoenrollment and most administrators find level 2 certificate templates are adequate for their organizational needs.



QUESTION 3

You need to recommend a solution for configuring the Automatic Updates settings on the VMs. What should you include in the recommendation?

- A. block inheritance
- B. loopback processing
- C. security filtering
- D. WMI filtering

Correct Answer: D

<http://technet.microsoft.com/en-us/library/cc947846%28WS.10%29.aspx>

To make sure that each GPO associated with a group can only be applied to computers running the correct version of Windows, use the Group Policy Management MMC snap-in to create and assign WMI filters to the GPO. Although you can create a separate membership group for each GPO, you would then have to manage the memberships of the different groups. Instead, use only a single membership group, and let WMI filters automatically ensure the correct GPO is applied to each computer.

QUESTION 4

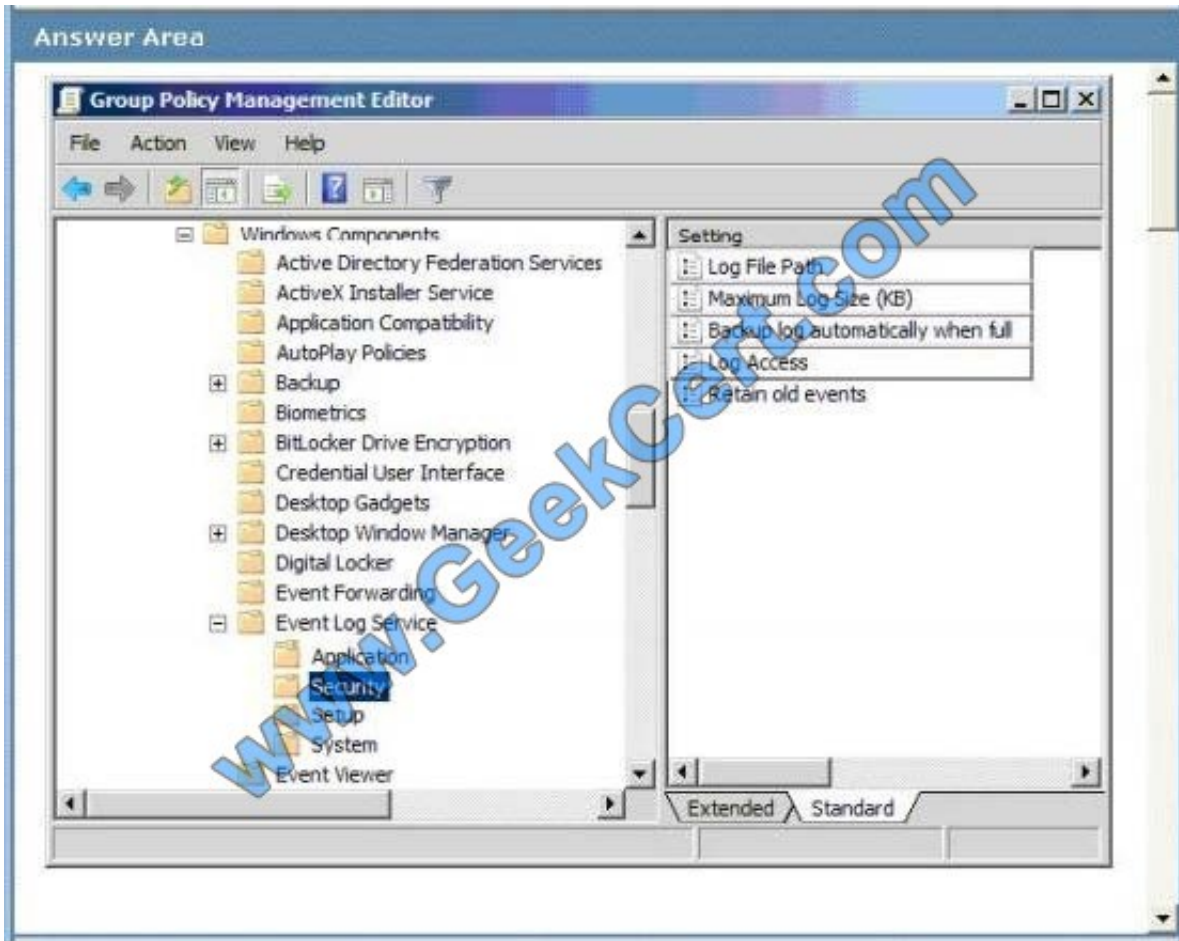
New security events are not being written to the current Security event log in the tailspintoys.com domain. However, old security events are still being maintained in the log.

You need to meet the security event log requirements for the tailspintoys.com domain.

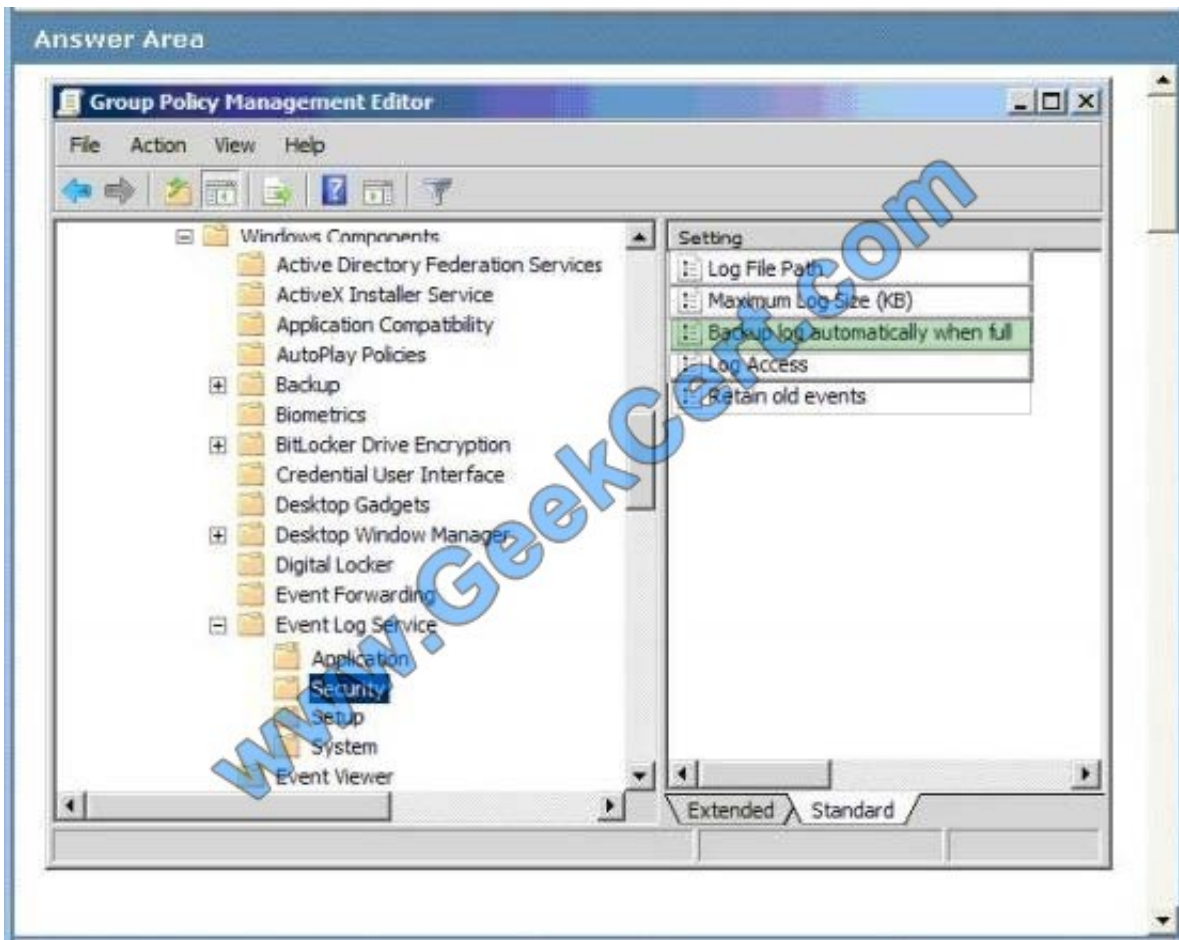
Which Group Policy setting or settings should you select?

To answer, select the appropriate setting or settings in the Group Policy Management Editor.

Hot Area:



Correct Answer:



Backup log automatically when full

This policy setting controls Event Log behavior when the log file reaches its maximum size and takes effect only if the Retain old events policy setting is enabled. If you enable this policy setting and the Retain old events policy setting is enabled, the Event Log file is automatically closed and renamed when it is full. A new file is then started. If you disable this policy setting and the Retain old events policy setting is enabled, new events are discarded and the old events are retained.

When this policy setting is not configured and the Retain old events policy setting is enabled, new events are discarded and the old events are retained.

Possible values: Enabled Disabled Not Configured normally you need RETAIN OLD EVENTS enabled also But this is already set in the default domain policy per the exhibit for the testlet

QUESTION 5

You need to recommend a backup strategy for the servers in the San Francisco office. The strategy must meet the company's technical requirements. What should you include in the recommendation?

- A. native-boot virtual hard disks (VHDs)
- B. Microsoft System Center Data Protection Manager 2010
- C. system restore points



D. Windows Server Backup

Correct Answer: D

You need to recommend a backup strategy for the servers in the San Francisco office. The strategy must meet the company's technical requirement.

Technical Requirement: Ensure that you can perform a bare metal recovery in the San Francisco Office Business Goal: Minimize costs whenever possible So the correct answer is Windows Server Backup because you can deploy Bare Metal

backups Previous answer below ...

<http://technet.microsoft.com/en-us/library/ff399260.aspx>

What is Data Protection Manager?

Microsoft System Center Data Protection Manager (DPM) 2010 is a member of the Microsoft System Center family of management products, designed to help IT professionals manage their Windows environment. DPM provides Windows

backup and recovery--delivering seamless data protection for Microsoft application and file servers by using integrated disk and tape media. DPM performs replication, synchronization, and recovery point creation to provide reliable protection

and rapid recovery of data for both system administrators and end-users.

[Latest 70-646 Dumps](#)

[70-646 PDF Dumps](#)

[70-646 Study Guide](#)



To Read the [Whole Q&As](#), please purchase the [Complete Version](#) from [Our website](#).

Try our product !

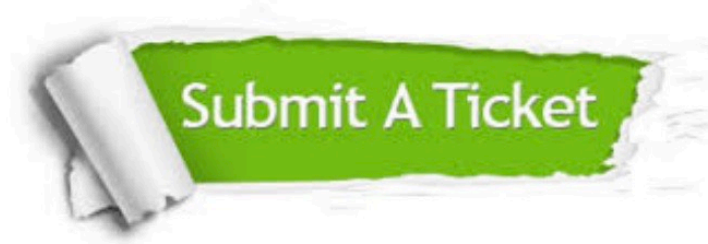
100% Guaranteed Success
100% Money Back Guarantee
365 Days Free Update
Instant Download After Purchase
24x7 Customer Support
Average 99.9% Success Rate
More than 800,000 Satisfied Customers Worldwide
Multi-Platform capabilities - [Windows](#), [Mac](#), [Android](#), [iPhone](#), [iPod](#), [iPad](#), [Kindle](#)

We provide exam PDF and VCE of Cisco, Microsoft, IBM, CompTIA, Oracle and other IT Certifications. You can view Vendor list of All Certification Exams offered:

<https://www.geekcert.com/allproducts>

Need Help

Please provide as much detail as possible so we can best assist you.
To update a previously submitted ticket:



 <p>One Year Free Update Free update is available within One Year after your purchase. After One Year, you will get 50% discounts for updating. And we are proud to boast a 24/7 efficient Customer Support system via Email.</p>	 <p>Money Back Guarantee To ensure that you are spending on quality products, we provide 100% money back guarantee for 30 days from the date of purchase.</p>	 <p>Security & Privacy We respect customer privacy. We use McAfee's security service to provide you with utmost security for your personal information & peace of mind.</p>
---	---	--

Any charges made through this site will appear as Global Simulators Limited.
All trademarks are the property of their respective owners.
Copyright © geekcert, All Rights Reserved.