



70-649^{Q&As}

TS: Upgrading Your MCSE on Windows Server 2003 to Windows Server 2008, Technology Specialist





Pass Microsoft 70-649 Exam with 100% Guarantee

Free Download Real Questions & Answers **PDF** and **VCE** file from:

<https://www.geekcert.com/70-649.html>

100% Passing Guarantee
100% Money Back Assurance

Following Questions and Answers are all new published by Microsoft Official Exam Center

-  **Instant Download** After Purchase
-  **100% Money Back** Guarantee
-  **365 Days** Free Update
-  **800,000+** Satisfied Customers





QUESTION 1

Your network contains an Active Directory domain named contoso.com.

You publish a RemoteApp named Appl. The Remote Desktop Connection (.rdp) file for App1 is unsigned.

When a user named User1 runs App1 from the Remote Desktop Web Access (RD Web Access) website, User1 is prompted for credentials.

You need to prevent users from being prompted for credentials when they run Appl.

What should you do?

- A. Enable the Allow Delegating Default Credentials Group Policy setting.
- B. Configure the SSL Settings for the RDWeb virtual directory.
- C. Enable the Assign a default domain for logon Group Policy setting.
- D. Modify the Authentication Settings for the RDWeb virtual directory.

Correct Answer: A

When applied to Terminal Services, Single Sign-On means using the credentials of the currently logged on user (also called default credentials) to log on to a remote computer. If you use the same user name and password logging on to your

local computer and connecting to a Terminal Server, enabling Single Sign-On will allow you to do it seamlessly, without having to type in your password again. Locally logged on credentials are used for connecting to TS Web Access,

however, they cannot be shared across TS Web Access and TS or TS Gateway. Thus you will need to enable the Group Policy settings described below in order to use locally logged on credentials for TS or TS Gateway connections.

How to enable Single Sign-On?

Single sign-On can be enabled using domain or local group policy.

1.

Log on to your local machine as an administrator.

2.

Start Group Policy Editor - "gpedit.msc".

3.

Navigate to "Computer Configuration\Administrative Templates\System\Credentials Delegation".

4.

Double-click the "Allow Delegating Default Credentials" policy.

5.



Enable the policy and then click on the "Show" button to get to the server list.

6.

Add "TERMSRV/" to the server list. You can add one or more server names. Using one wildcard (*) in a name is allowed. For example to enable Single Sign-On to all servers in "MyDomain.com" you can type "TERMSRV/*.MyDomain.com". (Notice the "Concatenate OS defaults with input above" checkbox on the picture above. When this checkbox is selected your servers are added to the list of servers enabled by OS by default. For Single Sign-On this default list is empty, so the checkbox has no effect.)

7.

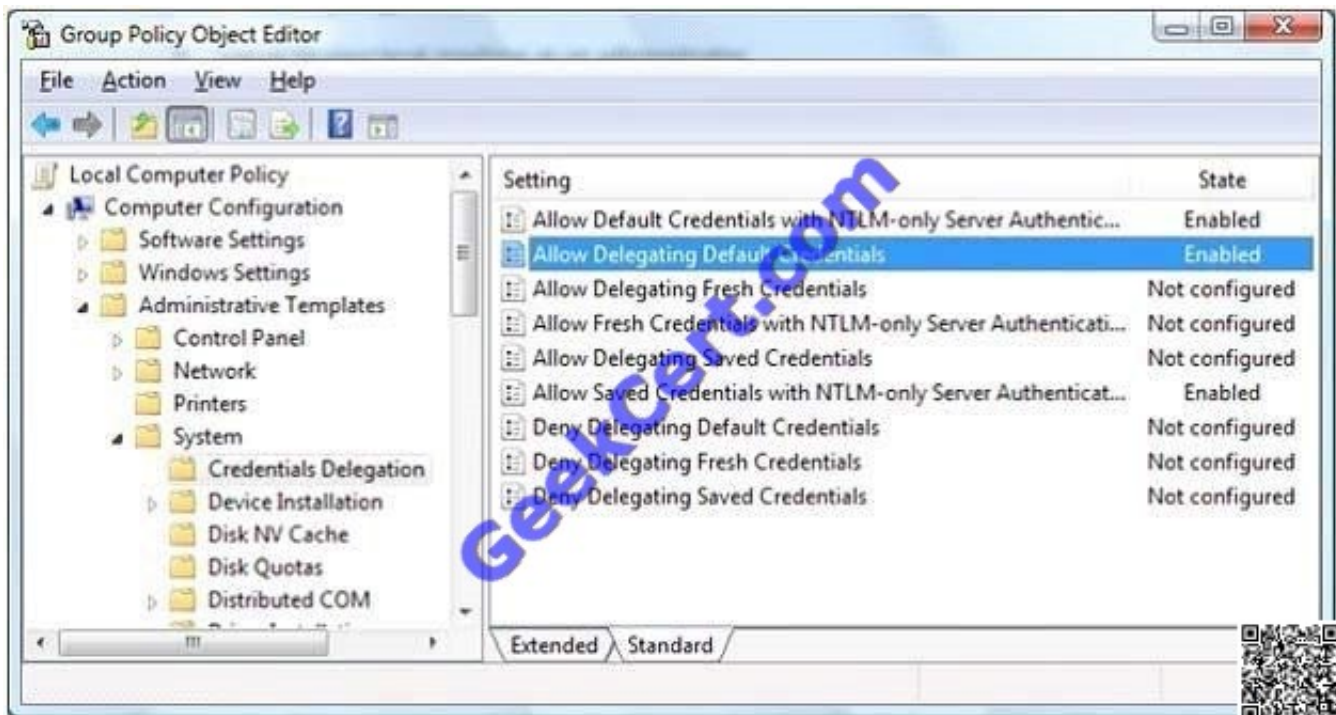
Confirm the changes by clicking on the "OK" button until you return back to the main Group Policy Object Editor dialog.

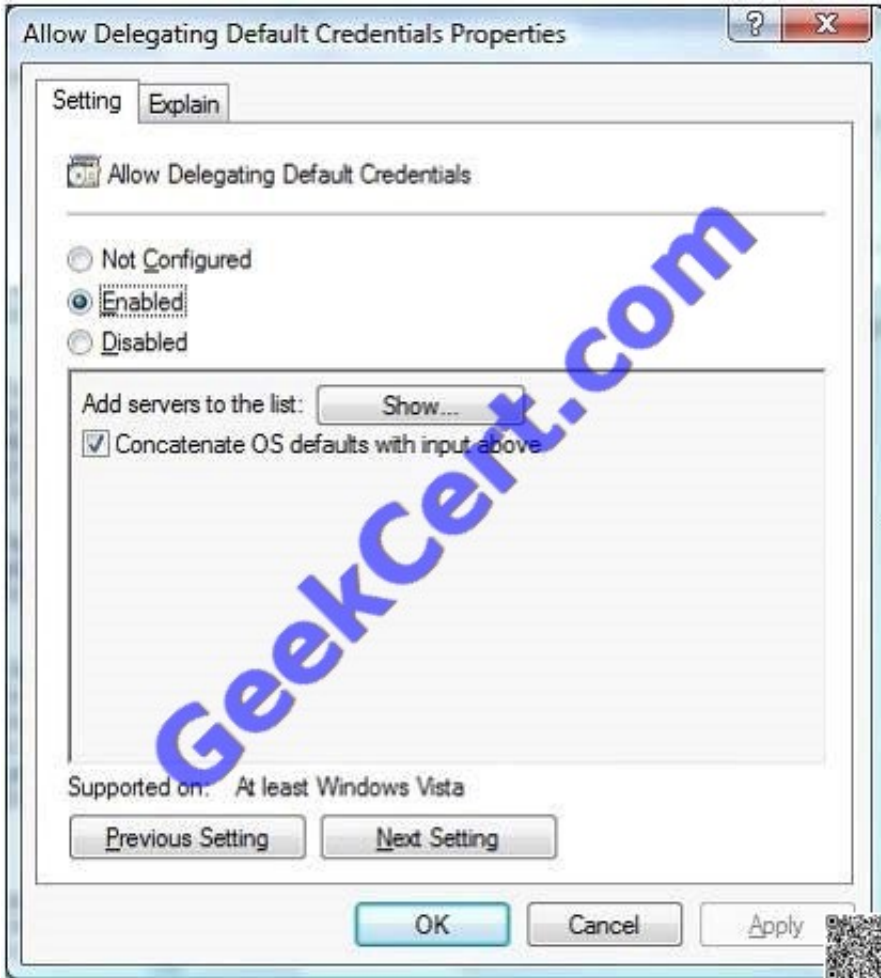
8.

At a command prompt, run "gpupdate" to force the policy to be refreshed immediately on the local machine.

9.

Once the policy is enabled you will not be asked for credentials when connecting to the specified servers.
<http://blogs.msdn.com/b/rds/archive/2007/04/19/how-to-enable-single-sign-on-for-my-terminal-serverconnections.aspx>





QUESTION 2



Your network contains an Active Directory domain. The domain contains several VPN servers that have the Routing and Remote Access service (RRAS) role service installed.

You need to configure all of the VPN servers to use the same network policies. The solution must ensure that any changes to the network policies automatically apply to all of the VPN servers.

What should you configure on the VPN servers?

- A. health policies
- B. remediation server groups
- C. system health validators (SHVs)
- D. the Windows Authentication authentication provider
- E. Group Policy preferences
- F. the Windows Accounting accounting provider
- G. IKEv2 client connections
- H. the RADIUS Accounting accounting provider
- I. the RADIUS Authentication authentication provider
- J. connection request policies

Correct Answer: I

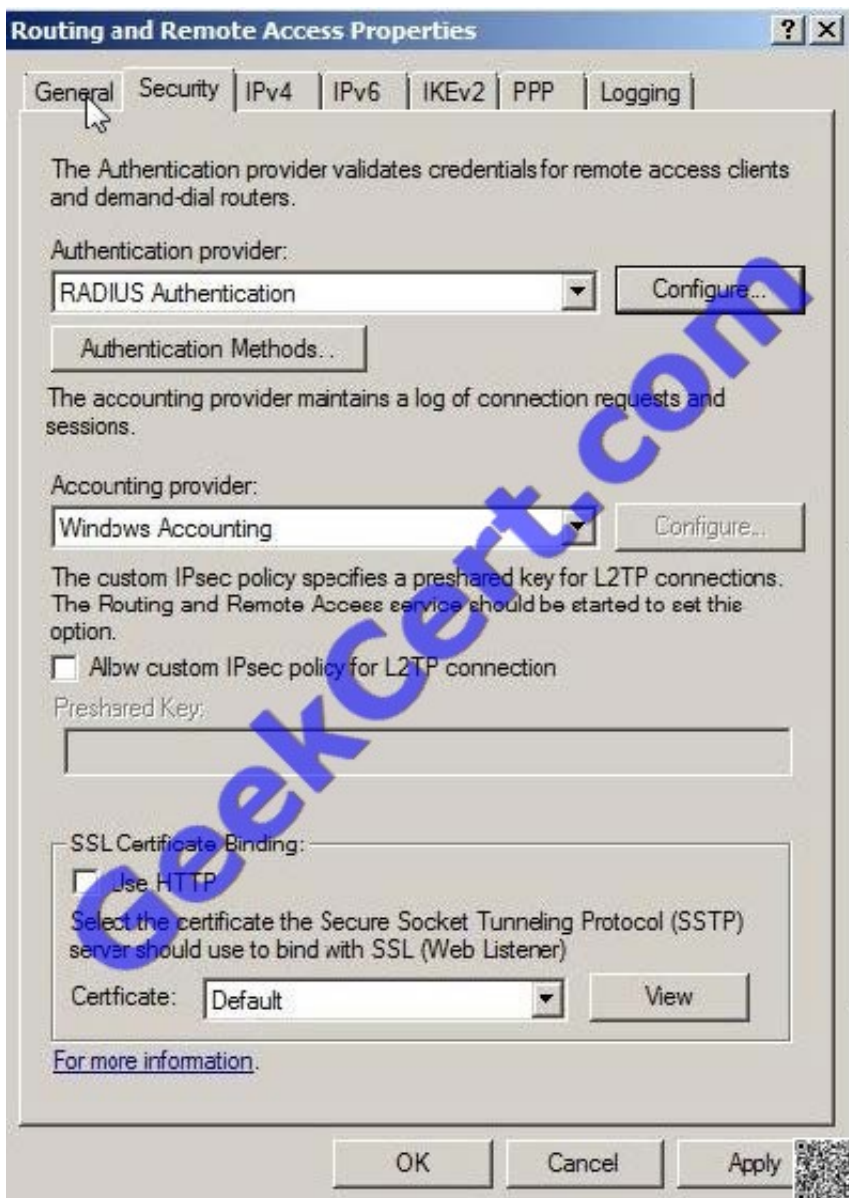
This example is from an Server08 RRAS role without NPS services role activated used as VPN Server.

Show here screenshots from RRAS Properties:

From Server 2008:



From Server 2008 R2:



<http://blogs.technet.com/b/rrasblog/archive/2009/03/25/remote-access-deployment-part-2- configuring-rras-asa-vpn-server.aspx> <http://technet.microsoft.com/en-us/library/cc754107.aspx> ==> NPS Used

QUESTION 3

Your network contains an Active Directory forest. The forest contains the member servers configured as shown in the following table.

Server name	Server configuration
VPN1	VPN server
VPN2	VPN server
Dial1	Dial-up server
Dial2	Dial-up server

All servers run Windows Server 2008 R2.



You deploy a new server named Server1.

You need to configure Server1 to provide central authentication for all dial-up connections and all VPN connections.

What should you install on Server1?

- A. Routing and Remote Access service (RRA5)
- B. Active Directory Lightweight Directory Services (AD LDS)
- C. Active Directory Federation Services (AD FS)
- D. Network Policy Server (NPS)

Correct Answer: D

Use connection request policies from Network Policy Server (NPS) Ref:

http://www.windowsnetworking.com/articles_tutorials/understanding-new-windows-server-2008-networkpolicy-server.html

QUESTION 4

Network Access Protection (NAP) is configured for the corporate network.

Users connect to the corporate network by using portable computers.

The company policy requires confidentiality of data when the data is in transit between the portable computers and the servers.

You need to ensure that users can access network resources only from computers that comply with the company policy.

What should you do?

- A. Create an IPSec Enforcement Network policy.
- B. Create an 802.IX Enforcement Network policy.
- C. Create a Wired Network (IEEE 802.3) Group policy.
- D. Create an Extensible Authentication Protocol (EAP) Enforcement Network policy.

Correct Answer: A

QUESTION 5

Your network consists of a single Active Directory domain. The network contains a Remote Desktop Session Host Server that runs windows Server 2008 R2, and client computers that run Windows 7. All computers are members of the domain.

You deploy an application by using the RemoteApp Manager. The Remote Desktop Session Host Server's security layer is set to Negotiate. You need to ensure that domain users are not prompted for credentials when they access the application.



What should you do?

- A. On all client computers, modify the Password Policy settings in the local Group Policy.
- B. On the server, modify the Credential Delegation settings in the local Group Policy.
- C. On all client computers, modify the Credential Delegation settings in the local Group Policy.
- D. On the server, modify the Password Policy settings in the local Group Policy.

Correct Answer: D

Configuration CredSSP policies, and by extension the SSO functionality they provide to Terminal Services, are configured via Group Policy. Use the Local Group Policy Editor to navigate to Local Computer Policy\ComputerConfiguration\Administrative Templates\System\Credentials Delegation , and enable one or more of the policy options. Source: [http://technet.microsoft.com/en-us/library/cc749211\(WS.10\).aspx](http://technet.microsoft.com/en-us/library/cc749211(WS.10).aspx) One needs to enable the policy on the client computers, because one want to allow the client computer to reuse the credentials.

[Latest 70-649 Dumps](#)

[70-649 PDF Dumps](#)

[70-649 Study Guide](#)



To Read the [Whole Q&As](#), please purchase the [Complete Version](#) from [Our website](#).

Try our product !

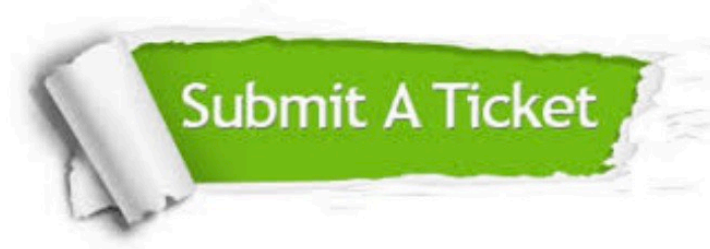
- 100% Guaranteed Success
- 100% Money Back Guarantee
- 365 Days Free Update
- Instant Download After Purchase
- 24x7 Customer Support
- Average 99.9% Success Rate
- More than 800,000 Satisfied Customers Worldwide
- Multi-Platform capabilities - [Windows](#), [Mac](#), [Android](#), [iPhone](#), [iPod](#), [iPad](#), [Kindle](#)

We provide exam PDF and VCE of Cisco, Microsoft, IBM, CompTIA, Oracle and other IT Certifications. You can view Vendor list of All Certification Exams offered:

<https://www.geekcert.com/allproducts>

Need Help

Please provide as much detail as possible so we can best assist you.
To update a previously submitted ticket:



 <p>One Year Free Update Free update is available within One Year after your purchase. After One Year, you will get 50% discounts for updating. And we are proud to boast a 24/7 efficient Customer Support system via Email.</p>	 <p>Money Back Guarantee To ensure that you are spending on quality products, we provide 100% money back guarantee for 30 days from the date of purchase.</p>	 <p>Security & Privacy We respect customer privacy. We use McAfee's security service to provide you with utmost security for your personal information & peace of mind.</p>
---	---	--

Any charges made through this site will appear as Global Simulators Limited.
All trademarks are the property of their respective owners.
Copyright © geekcert, All Rights Reserved.