



70-649^{Q&As}

TS: Upgrading Your MCSE on Windows Server 2003 to Windows Server 2008, Technology Specialist

Pass Microsoft 70-649 Exam with 100% Guarantee

Free Download Real Questions & Answers **PDF** and **VCE** file from:

<https://www.geekcert.com/70-649.html>

100% Passing Guarantee
100% Money Back Assurance

Following Questions and Answers are all new published by Microsoft Official Exam Center

-  **Instant Download** After Purchase
-  **100% Money Back** Guarantee
-  **365 Days** Free Update
-  **800,000+** Satisfied Customers





QUESTION 1

Your network contains a server named Server1 that has the Remote Desktop Session Host (RD Session Host) role service installed. You enable Plug and Play device redirection for Server1 by using a Group Policy.

You verify that the Group Policy is applied to Server1.

From a client computer, you configure Remote Desktop Connection as shown in the exhibit. (Click the Exhibit button.)



You discover that when you establish a Remote Desktop session to Server1, Plug and Play devices are not redirected.

You need to ensure that Plug and Play devices are redirected during Remote Desktop sessions to Server1.

What should you do? (Each correct answer presents part of the solution. Choose two.)

- A. On Server1, modify the Sessions settings of the RDP-Tcp Properties.
- B. On Server1, install the Desktop Experience feature.
- C. From the client computer, modify the Experience settings of Remote Desktop Connection.
- D. On Server1, install the Quality Windows Audio Video Experience feature.
- E. On Server1, modify the Client Settings of the RDP-Tcp Properties.



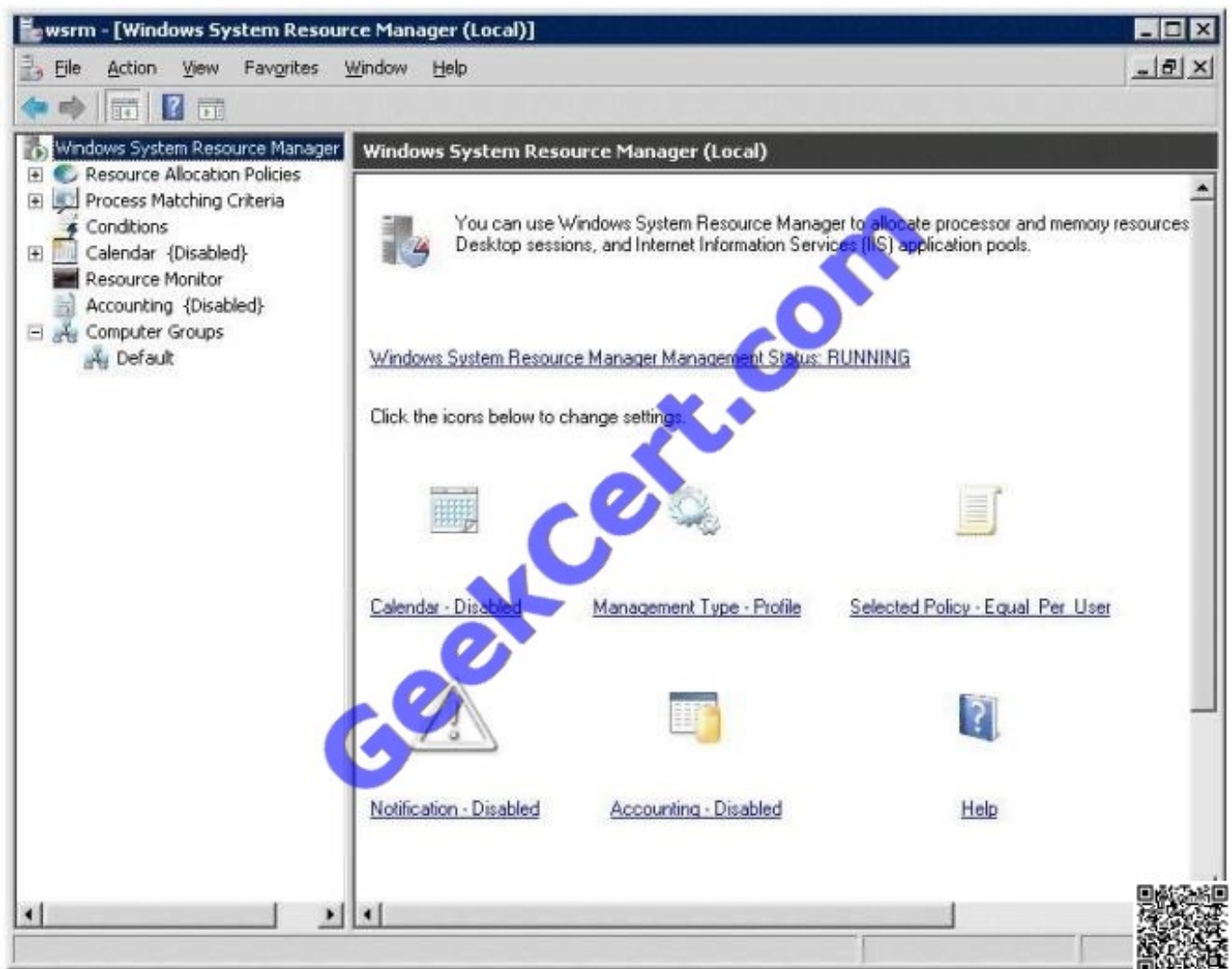
Correct Answer: BE

Explanation: Ref: [http://technet.microsoft.com/en-us/library/cc725887\(v=ws.10\).aspx](http://technet.microsoft.com/en-us/library/cc725887(v=ws.10).aspx)

QUESTION 2

Your network contains a server named Server1 that runs Windows Server 2008 R2. Server 1 has the Remote Desktop Session Host (RD Session Host) role service installed.

On server1, you install and configure the Windows System Resource Manager (WSRM) feature as shown in the exhibit. (Click the Exhibit button.)



You need to ensure that WSRM enforces the allocation of CPU capacity between users. What should you do?

- A. Enable Accounting.
- B. Change the Management type to Manage.
- C. Add Server1 to the Default computer group.



D. Change the resource allocation policy to Equal_per_process.

Correct Answer: B

QUESTION 3

Your network contains an Active Directory domain. The domain contains several VPN servers that have the Routing and Remote Access service (RRAS) role service installed. You need to collect information about the duration of the VPN connections. The information must be stored in a central location.

What should you configure on the VPN servers?

- A. the RADIUS Authentication authentication provider
- B. system health validators (SHVs)
- C. IKEv2 client connections
- D. remediation server groups
- E. the Windows Accounting accounting provider
- F. the Windows Authentication authentication provider
- G. health policies
- H. Group Policy preferences
- I. connection request policies
- J. the RADIUS Accounting accounting provider

Correct Answer: J

To use RADIUS accounting:

1. Open Routing and Remote Access.
2. Right-click the server name for which you want to configure RADIUS accounting, and then click Properties.
3. On the Security tab, in Accounting provider, click RADIUS accounting, and then click Configure.
4. In the RADIUS Accounting dialog box, click Add.
5. In the Add RADIUS Server dialog box, configure the settings for your RADIUS accounting server, and then click OK.

Note

To perform this procedure, you must be a member of the Administrators group. As a security best practice, consider using the Run As command rather than logging on with administrative credentials. If you have logged on with administrative

credentials, you can also open Routing and Remote Access by clicking Start, clicking Control Panel, double-clicking Administrative Tools, and then double-clicking Routing and Remote Access. For more information, see Default local groups,



Default groups, and Using Run as.

QUESTION 4

Your company has Active Directory Certificate Services (AD CS) and Network Access Protection (NAP) deployed on the network. You need to ensure that NAP policies are enforced on portable computers that use a wireless connection to access the network. What should you do? (Choose all that apply.)

- A. Use the Group Policy Management Console to access the wireless Group Policy settings, and disable the Prevent connections to infrastructure networks option.
- B. Configure all access points to use 802.1X authentication.
- C. Configure all portable computers to use MS-CHAP v2 authentication.
- D. Use the Group Policy Management Console to access the wireless Group Policy settings, and enable the Prevent connections to ad-hoc networks option.

Correct Answer: B

QUESTION 5

Your company has a server named DC1 that runs Windows Server 2008 R2. Server1 has the DHCP Server server role installed.

You find that a desktop computer named Computer1 is unable to obtain an IP configuration from the DHCP server.

You install the Microsoft Network Monitor 3.0 application on Server1. You enable P-mode in the Network Monitor application configuration. You plan to capture only the DHCP server-related traffic between Server1 and Computer1. The

network interface configuration for the two computers is shown in the following table.

	Server1	Computer1
IP address	192.168.2.1	169.254.15.84
MAC address	00-0A-5E-1C-7F-67	00-17-31-D5-5E-FF

You need to build a filter in the Network Monitor application to capture the DHCP traffic between Server1 and Computer1. Which filter should you use?

- A. IPv4.Address == 169.254.15.84 andand DHCP
- B. IPv4.Address == 192.168.2.1 andand DHCP
- C. Ethernet.Address == 0x000A5E1C7F67 andand DHCP
- D. Ethernet.Address == 0x001731D55EFF andand. DHCP

Correct Answer: D



VCE & PDF

GeekCert.com

<https://www.geekcert.com/70-649.html>

2021 Latest geekcert 70-649 PDF and VCE dumps Download

[Latest 70-649 Dumps](#)

[70-649 VCE Dumps](#)

[70-649 Braindumps](#)



To Read the [Whole Q&As](#), please purchase the [Complete Version](#) from [Our website](#).

Try our product !

- 100% Guaranteed Success
- 100% Money Back Guarantee
- 365 Days Free Update
- Instant Download After Purchase
- 24x7 Customer Support
- Average 99.9% Success Rate
- More than 800,000 Satisfied Customers Worldwide
- Multi-Platform capabilities - [Windows](#), [Mac](#), [Android](#), [iPhone](#), [iPod](#), [iPad](#), [Kindle](#)

We provide exam PDF and VCE of Cisco, Microsoft, IBM, CompTIA, Oracle and other IT Certifications. You can view Vendor list of All Certification Exams offered:

<https://www.geekcert.com/allproducts>

Need Help

Please provide as much detail as possible so we can best assist you.
To update a previously submitted ticket:



 <p>One Year Free Update Free update is available within One Year after your purchase. After One Year, you will get 50% discounts for updating. And we are proud to boast a 24/7 efficient Customer Support system via Email.</p>	 <p>Money Back Guarantee To ensure that you are spending on quality products, we provide 100% money back guarantee for 30 days from the date of purchase.</p>	 <p>Security & Privacy We respect customer privacy. We use McAfee's security service to provide you with utmost security for your personal information & peace of mind.</p>
---	---	--

Any charges made through this site will appear as Global Simulators Limited.
All trademarks are the property of their respective owners.
Copyright © geekcert, All Rights Reserved.