



70-662^{Q&As}

TS: Microsoft Exchange Server

Pass Microsoft 70-662 Exam with 100% Guarantee

Free Download Real Questions & Answers **PDF** and **VCE** file from:

<https://www.geekcert.com/70-662.html>

100% Passing Guarantee
100% Money Back Assurance

Following Questions and Answers are all new published by Microsoft
Official Exam Center

-  **Instant Download** After Purchase
-  **100% Money Back** Guarantee
-  **365 Days** Free Update
-  **800,000+** Satisfied Customers





QUESTION 1

Your network contains an Exchange Server 2010 Service Pack 1 (SP1) organization named fabrikam.com.

You have two mailbox-enabled users named User1 and User2.

You need to perform the following tasks:

Ensure that User2 can send email messages as User1.

Ensure that an entry is logged on the server each time User2 sends a message as User1.

Review the list of logged email messages.

What should you do?

Select and Place:

The screenshot shows an exam interface with a list of tasks on the left and an empty answer area on the right. The tasks are:

- Create a retention policy.
- Enable a litigation hold for User1.
- Modify User1 by using the Set-Mailbox cmdlet.
- Modify User2 by using the Set-Mailbox cmdlet.
- Assign permissions to User2 by using the Add-ADPermission cmdlet.
- Run a non-owner mailbox access report from the Exchange Control Panel (ECP).
- Assign permissions to User1 by using the Add-ADPermission cmdlet.
- Create a new Hub Transport rule.
- Review the Application log from Event Viewer.

The answer area is currently empty. A large watermark 'www.GeekCert.com' is overlaid diagonally across the interface.

Correct Answer:



	Answer Area
Create a retention policy.	Assign permissions to User2 by using the Add-ADPermission cmdlet.
Enable a litigation hold for User1.	Modify User1 by using the Set-Mailbox cmdlet.
Modify User2 by using the Set-Mailbox cmdlet.	Run a non-owner mailbox access report from the Exchange Control Panel (ECP).
Assign permissions to User1 by using the Add-ADPermission cmdlet.	
Create a new Hub Transport rule.	
Review the Application log from Event Viewer.	

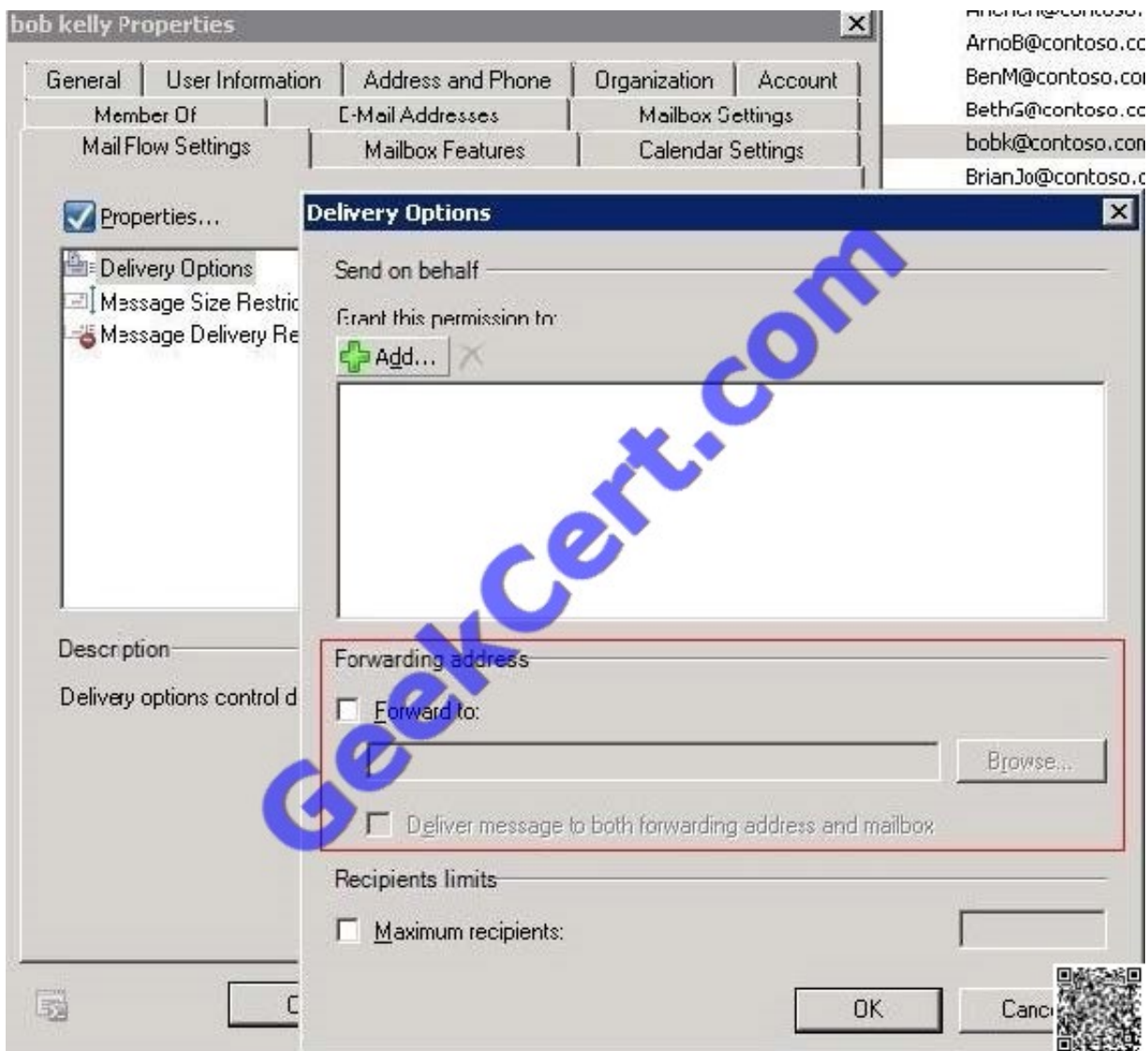
1. Assign permissions to User2 by using the Add-ADPermission cmdlet.
2. Modify user1 by using the Set-Mailbox cmdlet.
3. Run a non-owner mailbox access report from the Exchange Control Panel (ECP).

QUESTION 2

Which option should you choose to configure User1's mailbox so that all messages that are sent to User1's mailbox are also delivered to the Compliance Mailbox?

- A. Organization Configuration -> Mailbox
- B. Organization Configuration -> Client Access
- C. Organization Configuration -> Hub Transport
- D. Server Configuration -> Mailbox
- E. Server Configuration -> Client Access
- F. Server Configuration -> Hub Transport
- G. Recipient Configuration -> Mailbox
- H. Recipient Configuration -> Client Access
- I. Recipient Configuration -> Hub Transport

Correct Answer: G



QUESTION 3

You need to identify all the mailboxes in the organization with a size bigger than 5 Gb. What command you should execute?

- A. `Get-AddressList -Identity "All users" | Get-MailboxFolderStatistics`
- B. `Get-Mailbox | Get-MailboxStatistics | Format-Table displayname, total item size`
- C. `Get-MailUser | Get-MailboxStatistics | Format-Table displayname, total item size`
- D. `Get-StoreUsageStatistics -Identity "All users"`

Correct Answer: B



QUESTION 4

You have an Exchange organization. All servers in the organization have Exchange Server 2010 Service Pack 1 (SP1) installed.

The organization contains a database availability group (DAG) named DAG1. DAG1 contains three Mailbox servers including a server named Server1.

Server1 fails.

You restore Server1.

You need to ensure that Server1 can replicate mailbox databases from DAG1.

What should you do first?

- A. Modify the GUID for Server 1
- B. Removed the object for Server1 from DAG1.
- C. Remove the default Mailbox Database from Server 1
- D. Disable log truncation for the Mailbox database in DAG1

Correct Answer: B

: Should be C: Remove-DatabaseAvailabilityGroupServer -Identity DAG1 -MailboxServer MBX1 <http://technet.microsoft.com/en-us/library/dd638206.aspx>

QUESTION 5

You have an Exchange Server 2003 organization. All servers in the organization run Exchange Server 2003 Service Pack 1 (SP1). Corporate security policy states that the Exchange servers cannot be managed by using Remote Desktop sessions.

You plan to deploy Exchange Server 2010 SP1 servers to the network. You have a member server named Server5 that runs Windows Server 2008 SP2. You need to install the Exchange Management Console (EMC) on Server5.

What should you do on Servers?

- A. `pnun setup /mode:upgrade.`
- B. Modify the Internet Information Services (IIS) authentication settings.
- C. Run `setup /nprs:server5.`
- D. Suppress link state updates.
- E. Run `setup /rprs:server5.`
- F. Add a mail exchange (MX) record to the internal DNS zone.
- G. Modify the smart host settings.



H. Install Exchange Server 2003 SP2.

I. Install Windows Server 2008 R2.

J. Install Windows 7.

K. Add a mail exchange (MX) record to the public DNS zone,

L. Run setup /r:mt.

Correct Answer: L

Setup / (r=roles): (mt or t=Management tools) Setup /r:mt <http://technet.microsoft.com/en-us/library/bb232090.aspx>

[Latest 70-662 Dumps](#)

[70-662 Study Guide](#)

[70-662 Exam Questions](#)



To Read the [Whole Q&As](#), please purchase the [Complete Version](#) from [Our website](#).

Try our product !

- 100% Guaranteed Success
- 100% Money Back Guarantee
- 365 Days Free Update
- Instant Download After Purchase
- 24x7 Customer Support
- Average 99.9% Success Rate
- More than 800,000 Satisfied Customers Worldwide
- Multi-Platform capabilities - [Windows](#), [Mac](#), [Android](#), [iPhone](#), [iPod](#), [iPad](#), [Kindle](#)

We provide exam PDF and VCE of Cisco, Microsoft, IBM, CompTIA, Oracle and other IT Certifications. You can view Vendor list of All Certification Exams offered:

<https://www.geekcert.com/allproducts>

Need Help

Please provide as much detail as possible so we can best assist you.
To update a previously submitted ticket:



 One Year Free Update <p>Free update is available within One Year after your purchase. After One Year, you will get 50% discounts for updating. And we are proud to boast a 24/7 efficient Customer Support system via Email.</p>	 Money Back Guarantee <p>To ensure that you are spending on quality products, we provide 100% money back guarantee for 30 days from the date of purchase.</p>	 Security & Privacy <p>We respect customer privacy. We use McAfee's security service to provide you with utmost security for your personal information & peace of mind.</p>
---	---	--

Any charges made through this site will appear as Global Simulators Limited.
All trademarks are the property of their respective owners.
Copyright © geekcert, All Rights Reserved.